

# CW KEYER and CWtype setup

## Router setup:

Note: The absolute port numbers do not matter. The key is consistency - the same port number must be used for a specific function every time it is used.

1. Assign the radio control virtual COM port (used by the logging program).
2. Assign a port for CW and PTT. If the logging or digital program is using PTT, use 2<sup>nd</sup> PTT.
3. Assign a port for WinKey. Note: Although CWtype will not use WinKey its output can operate in parallel with WinKey allowing WinKey to be used for manual operation.

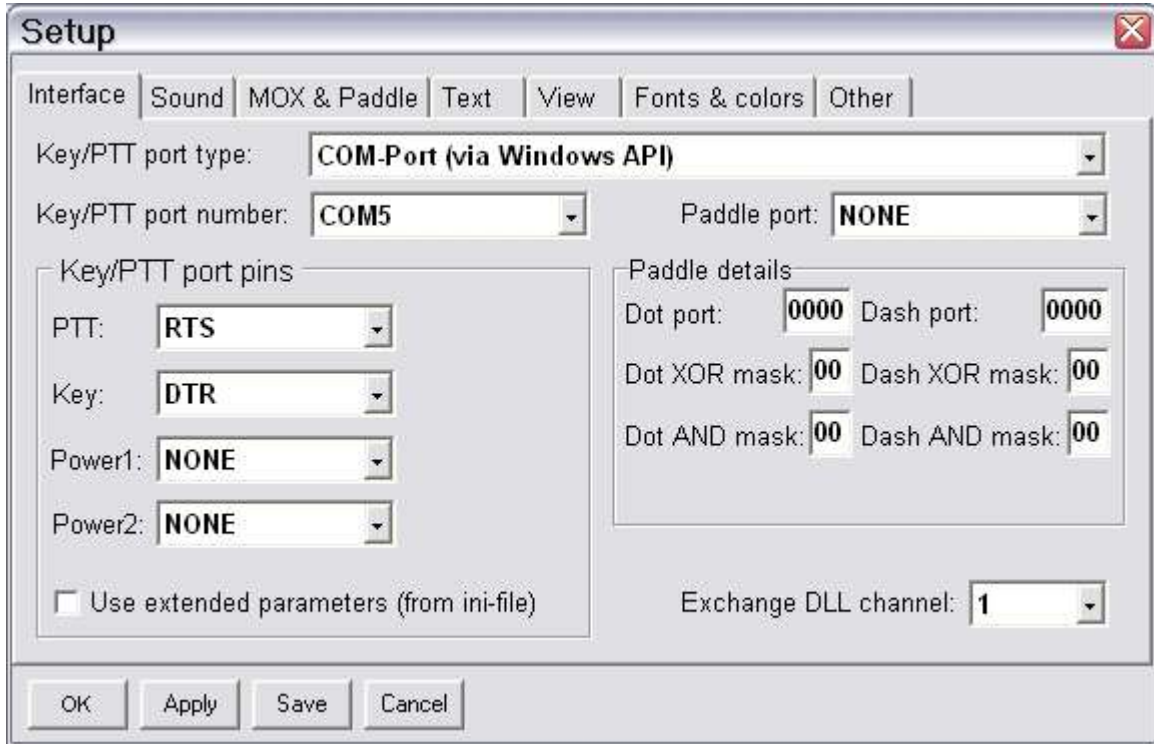
Ports | CW / WinKey | CW Messages

RADIO

CAT:	COM4		closed	Set
2nd CAT:	none			
CW:	COM5	DTR	closed	Test
PTT:	COM5	RTS	closed	Test
WinKey:	COM3		closed	Test Mon
Control:	none			Mon

4. Save settings to a preset by selecting menu **Preset | Save as**. Choose a position and name it CWtype.

## CWtype setup:



1. Click **Setup | Interface**
2. Select Key/PTT port type: **COM-Port (via Windows API)**
3. Set PTT: RTS
4. Set Key: DTR (CW output)