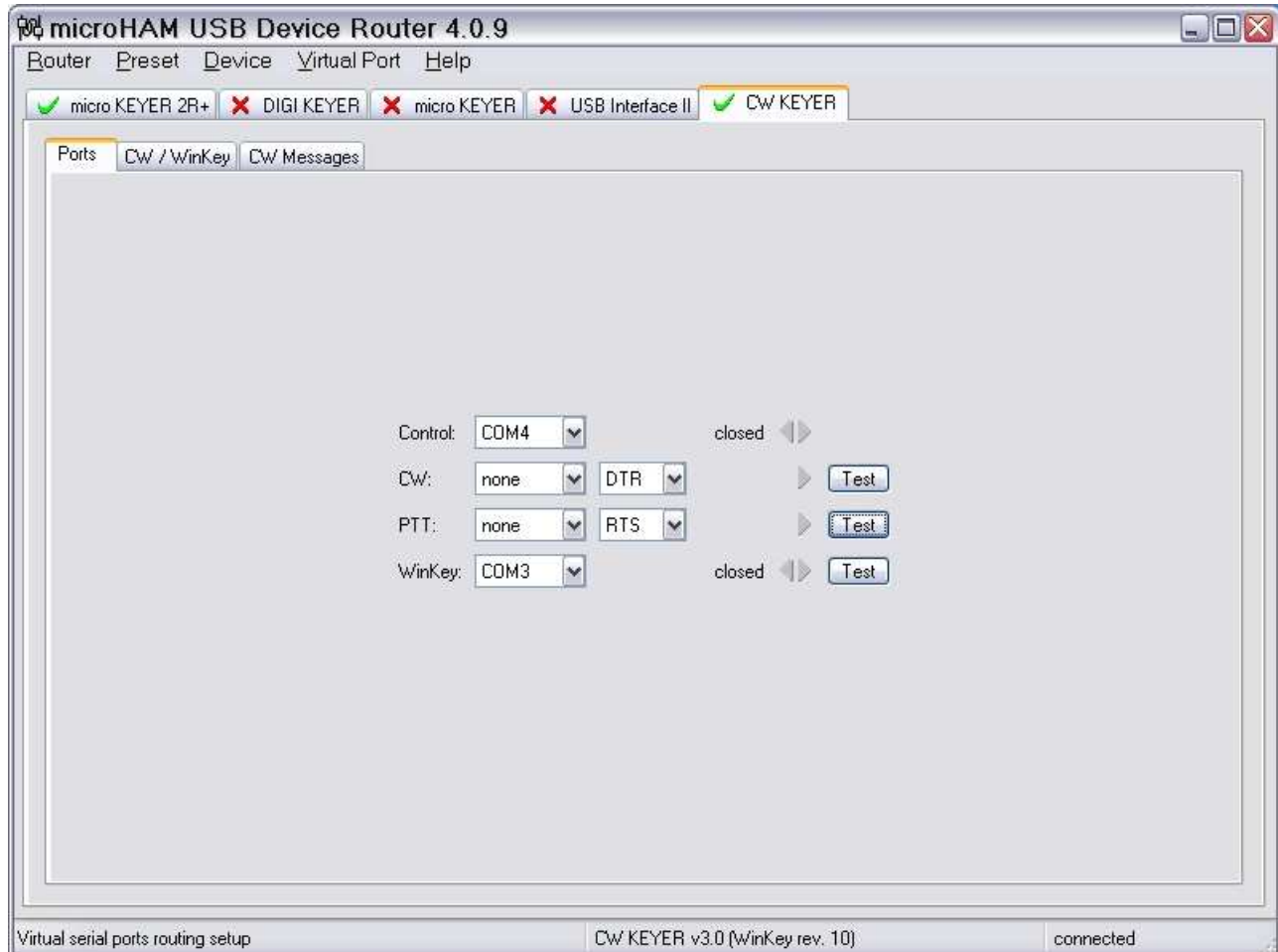


# CW Keyer and DXBase 2007 setup guide

## Router setup:

Note: The absolute port numbers do not matter. The key is consistency - the same port number must be used for a specific function every time it is used.

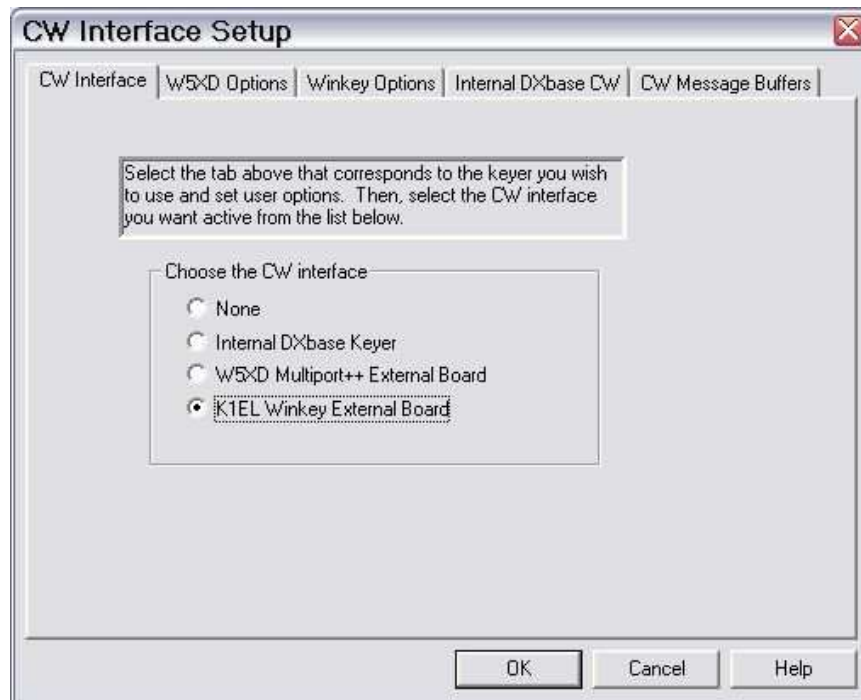
1. Assign the radio control virtual COM port.
2. Assign a port for WinKey



3. Save the settings to a preset by selecting **Preset | Save as**. Choose a position and name it DXBase.

## CW/WinKey setup:

The Internal DXBase Keyer will not work with microKEYER. You must use WinKey.



1. Click **Tools | Options | CW Keyer**

2. Select **K1EL Winkey External Board**.

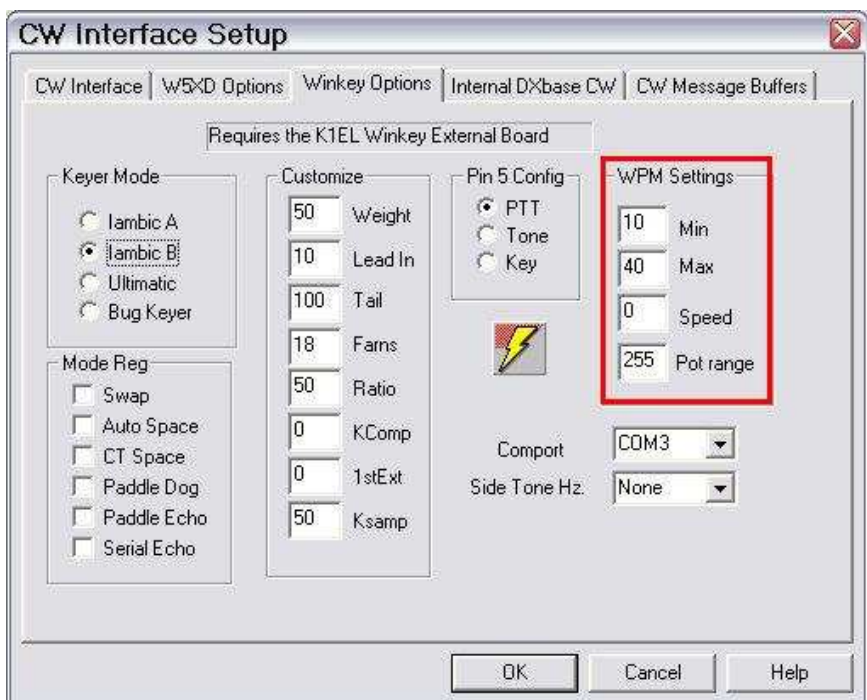
3. Select the Winkey Options tab.

4. If you want to control CW speed using the Speed control on the *microKEYER* front panel, set Speed = 0 and Pot range = 255.

5. Set Comport to the virtual port you selected for WinKey on Router's Ports Tab.

6. Select PTT for Pin 5. DXBase does not support QSK with WinKey.

7. Click OK to save your settings.



Note: It is generally most convenient to make the CW parameters the same as those set on Router's CW/WinKey tab.