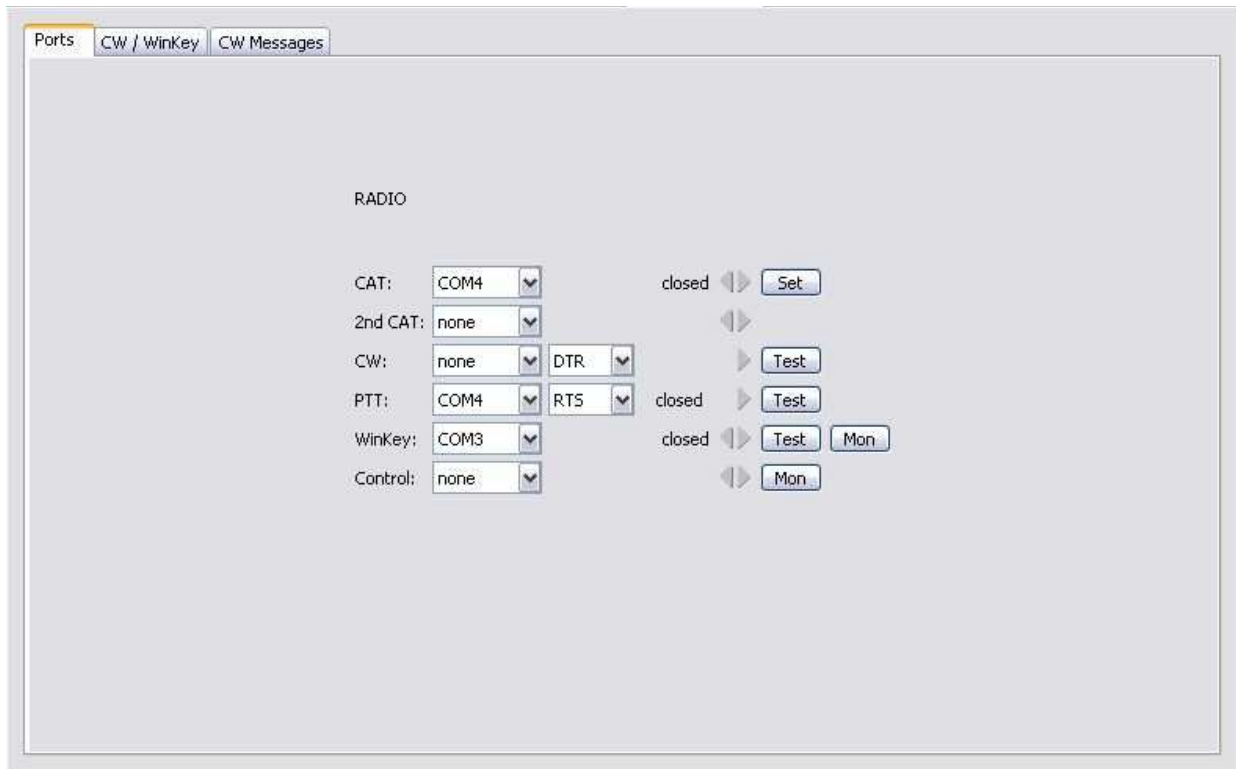


CW KEYER and DXLab Suite setup

Router setup:

Note: The absolute port numbers do not matter. The key is consistency - the same port number must be used for a specific function every time it is used.

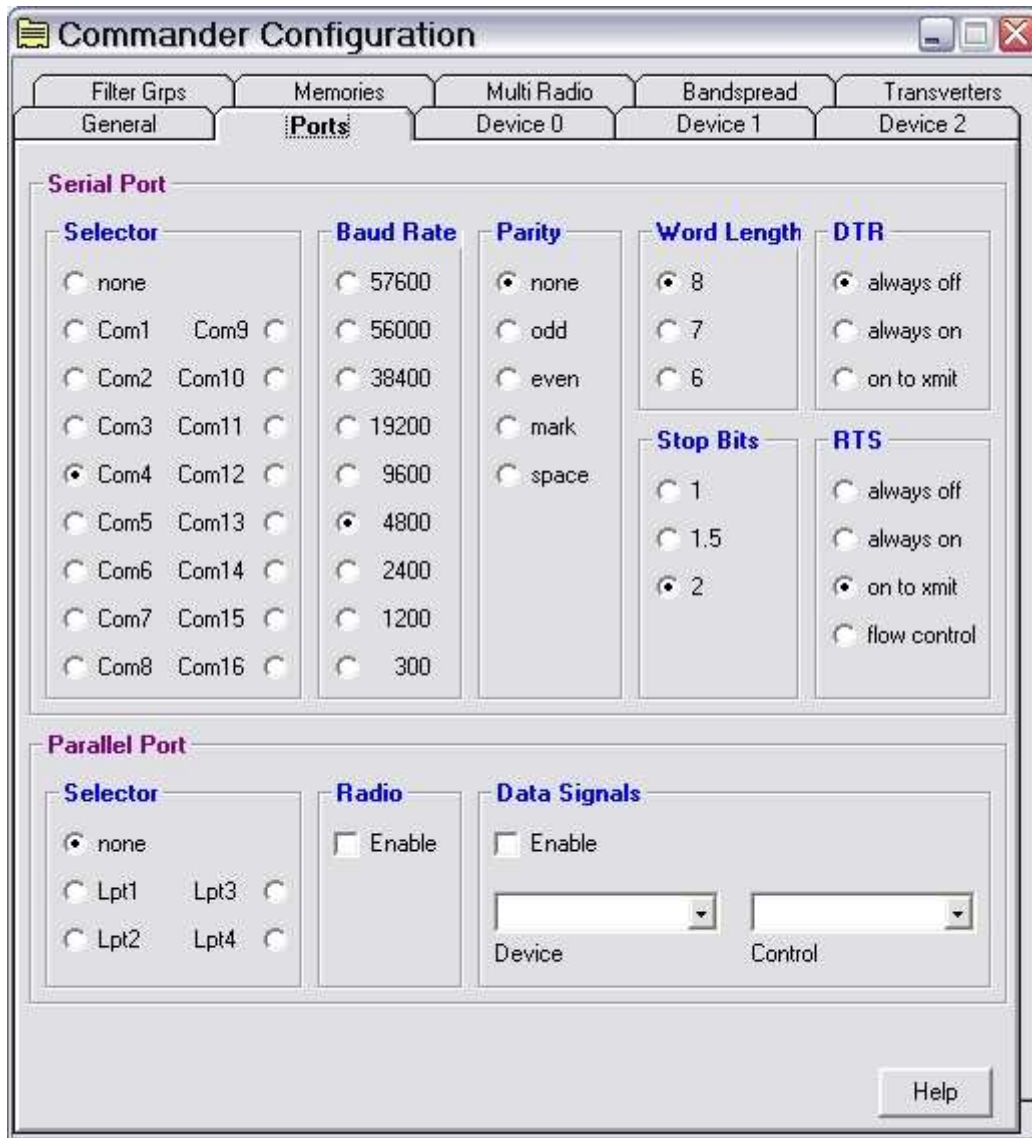
1. Assign the radio control virtual COM port.
2. Assign a port for WinKey.
3. Assign the same port for PTT as you assigned for Control.



4. Save settings to a preset by selecting menu **Preset | Save as**. Choose a position and name it DXLab.

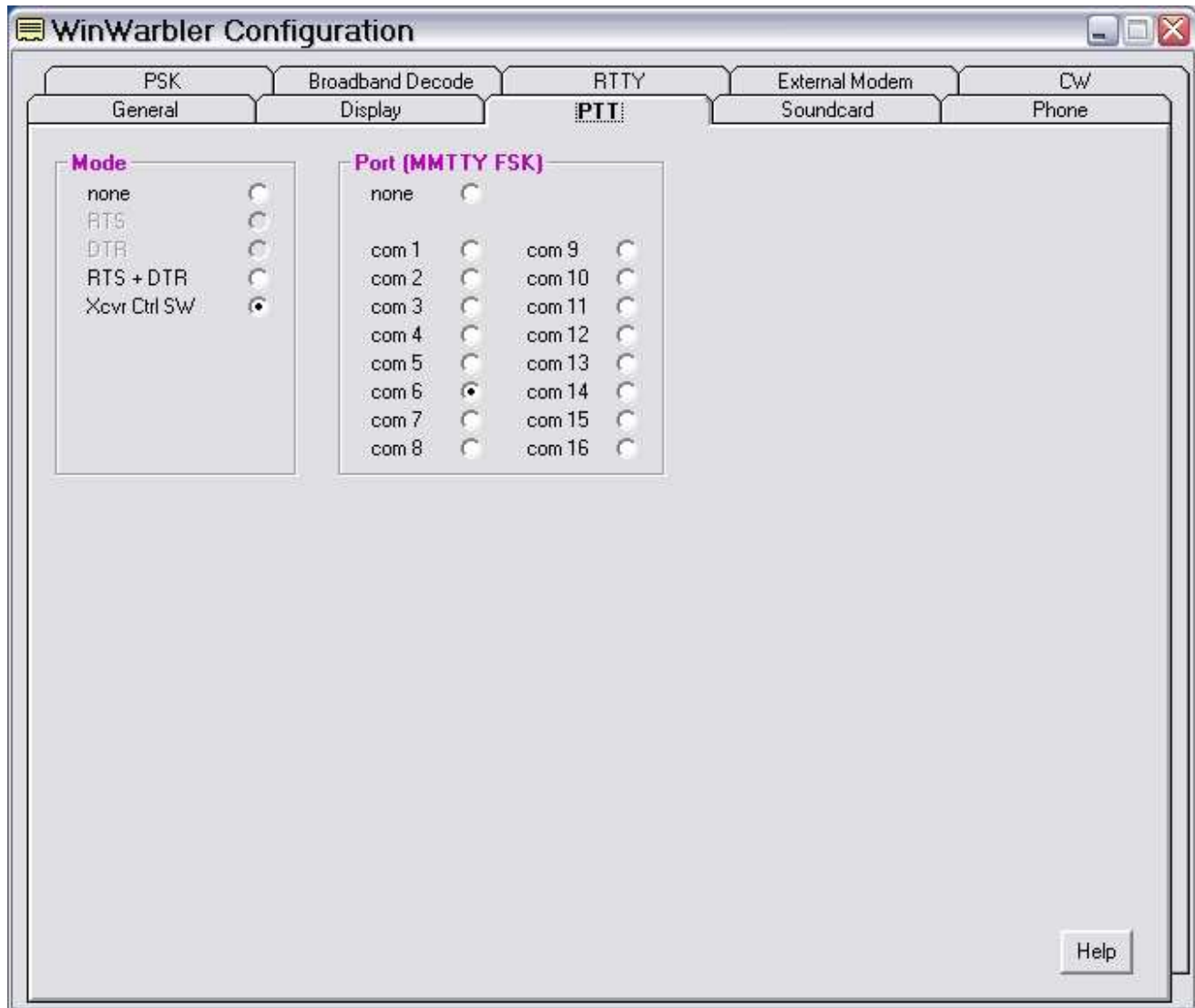
CI-V Commander setup:

1. Click **Config** and select the **Ports** tab ...

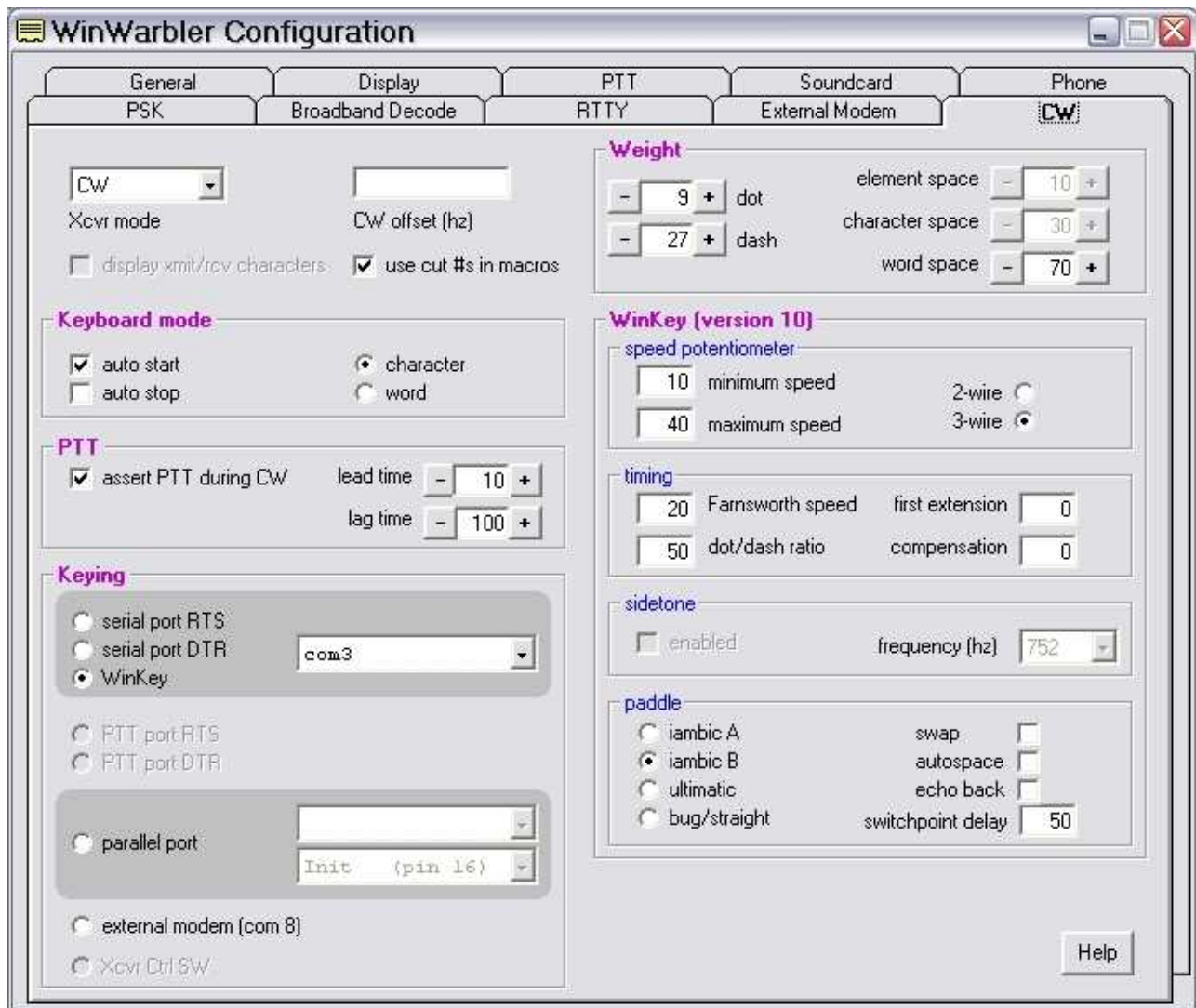


2. Select the virtual COM port you used for control in Router's Ports tab
3. Select the Baud Rate, Parity, Word Length, and Stop Bits settings required by your radio.
4. Set DTR "always off"
5. Set RTS "on to xmit" - this is PTT

WinWarbler setup:



1. Click **Config** and select the **PTT tab** ...
2. Select "Xcvr Ctl SW" as the Mode.
3. Ignore the "Port" box.
4. Select the **CW Tab** ...



5. Select **WinKey** in the Keying box and set the port you configured for WinKey on Router's Ports tab.
6. Configure the settings you prefer for CW operation including weight, speed range for WinKey's speed pot, PTT or QSK operation, etc. It is generally most convenient to make the CW parameters the same as you have set on Router's CW/WinKey tab.