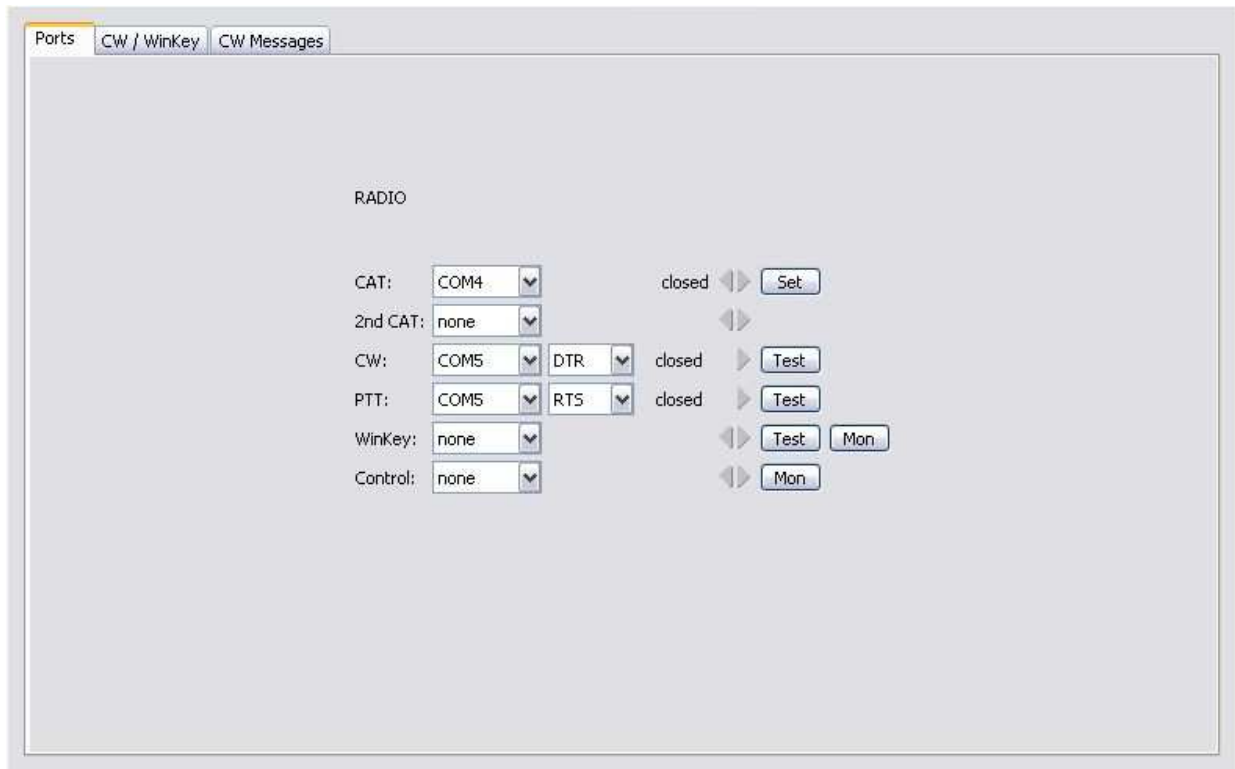


CW Keyer and Hamscope setup

Router setup:

Note: The absolute port numbers do not matter. The key is consistency - the same port number must be used for a specific function every time it is used.

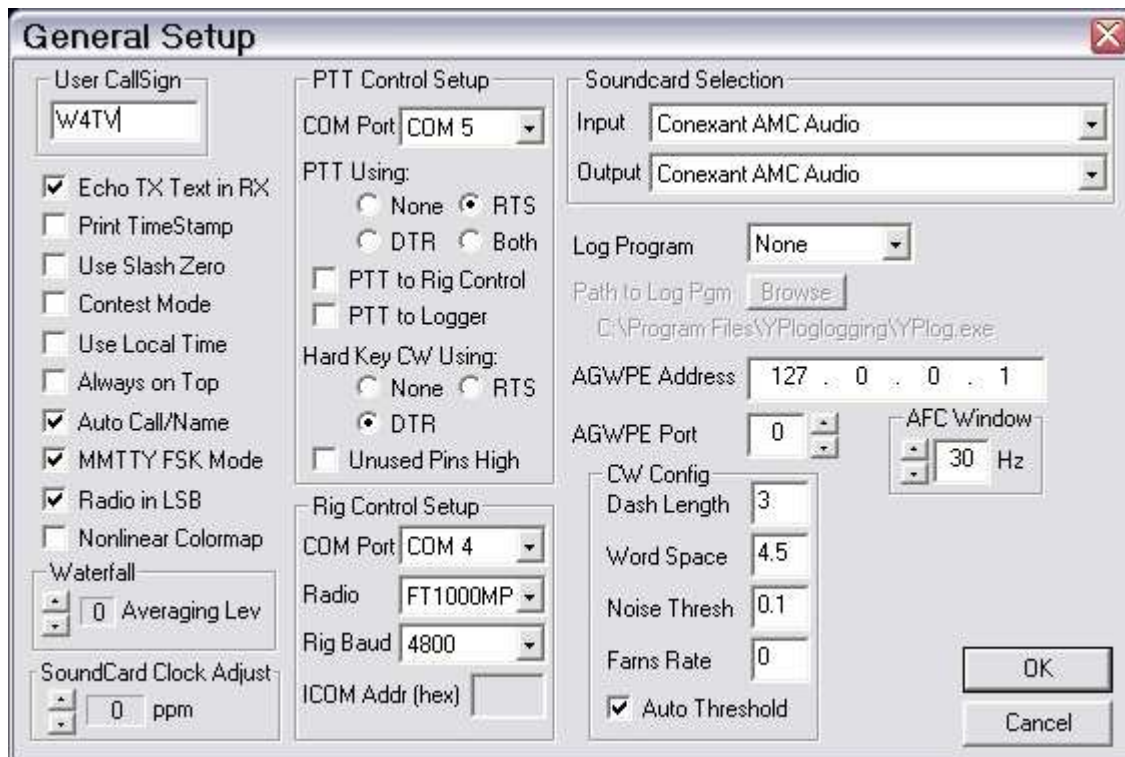
1. Assign a virtual port for radio control.
2. Assign a port for CW. Hamscope does not support Winkey - you must use serial CW.
3. Assign the same port for PTT as you used for CW.



4. Save the settings to a preset by selecting **Preset | Save as**. Choose a position and name it Hamscope.

Hamscope setup:

1. Click **Settings | General Setup ...**



2. Set the COM Port in "PTT Control Setup" to the virtual port you selected for CW and PTT in Router.
3. Set "PTT Using" to RTS
4. Set "Hard Key CW Using" to DTR
5. Set the COM Port in "Rig Control Setup" to the port you selected for Radio Control in Router. Select your radio and set the data communications (Rig Baud) as required by your radio.
6. If you operate digital modes using an external audio interface, select your Soundcard input and output
7. Click OK to save the settings