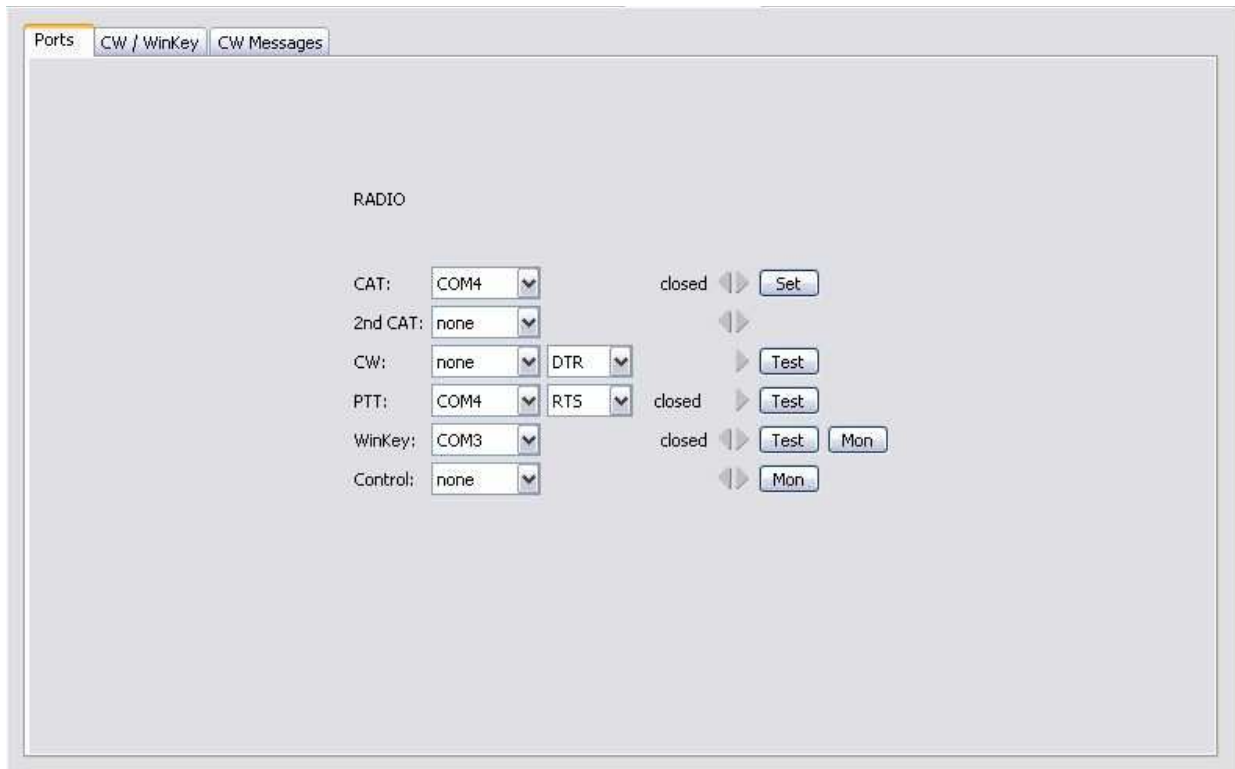


# CW KEYER and Logger32 setup

## **Router setup:**

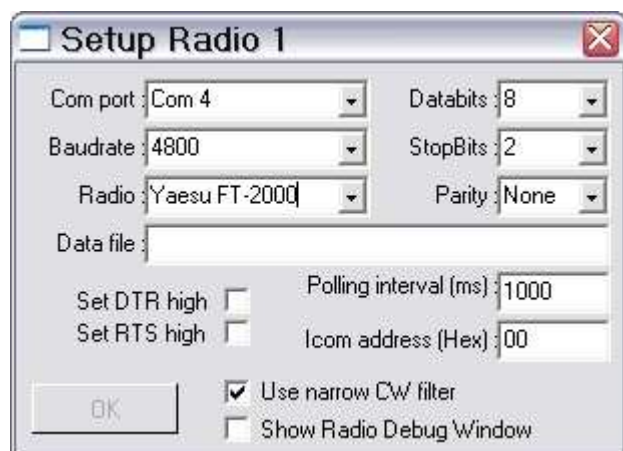
Note: The absolute port numbers do not matter. The key is consistency - the same port number must be used for a specific function every time it is used.

1. Assign the radio control virtual COM port.
2. Assign a port for WinKey.
3. Assign the same port for PTT as you assigned for Control.



4. Save settings to a preset by selecting menu **Preset | Save as**. Choose a position and name it Logger32.

## Logger32 setup:



1. Click **Setup | Radio | Radio 1 configuration ...**
2. Select the virtual COM port you used for control in Router's Ports tab
3. Select the Baud Rate, Parity, Databits, parity, Word Length, and Stop Bits settings required by your radio.
4. Uncheck "Set DTR high" and "set RTS high"

5. Click the CW icon to open the CW machine
6. Select **Config | WinKey**
7. Select **Config | Keyer Setup**
8. Select the Serial Port you set for WinKey in Router's Ports tab
9. Configure the settings you prefer for CW operation including weight, speed range for WinKey's speed pot, PTT or QSK operation, etc.

It is generally most convenient to make the CW parameters the same as you have set on Router's CW/WinKey tab.

