

# CW Keyer and LOGic setup guide

## Router setup:

Note: The absolute port numbers do not matter. The key is consistency - the same port number must be used for a specific function every time it is used.

1. Assign the radio control virtual COM port.
2. Assign a port for WinKey.
3. Assign the same port for PTT as you assigned for CAT.

Ports | CW / WinKey | CW Messages

RADIO

14.022.000 CW

CAT: COM4 open 19200 8N2 Set

2nd CAT: none

CW: none DTR Test

PTT: COM4 RTS open Test

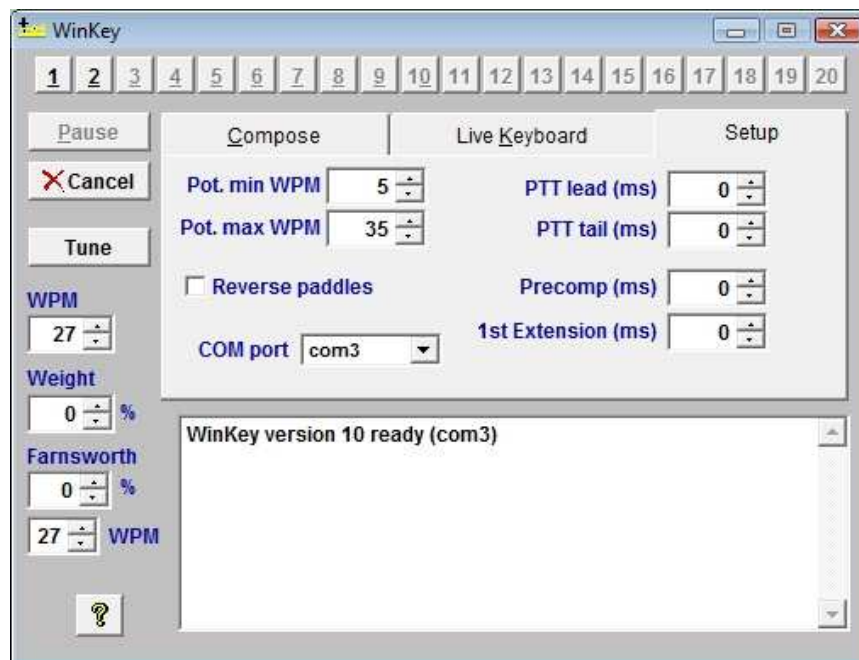
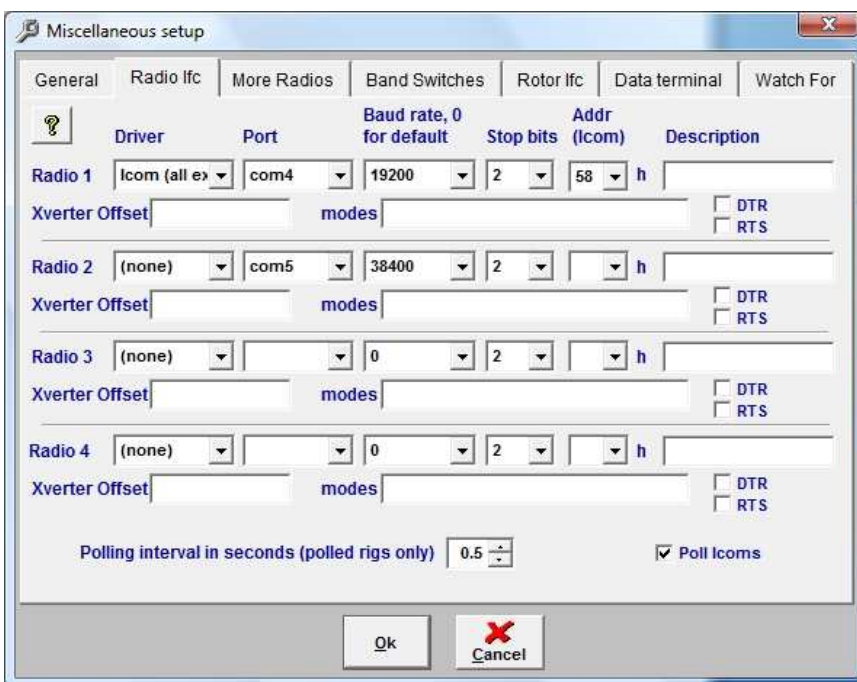
WinKey: COM3 closed Test Mon

Control: none Mon

4. Save the settings to a preset by selecting **Preset | Save as**. Choose a position and name it LOGic.

## LOGic setup:

1. Click **Tools | Setup | Misc ham setup, rig, TNC ...**
2. Select the Radio Ifc tab.
3. Select your Rig
4. Select the Port you assigned for Control in Router
5. Set the Baud Rate, Stop Bits and other settings required by your radio.
6. Do not check DTR or RTS.
7. Click OK to save your settings



8. Click **Forms | WinKeyer** to open the WinKey Keyer Window.
  9. Select the **Setup** tab to configure the keyer.
  10. Set the COM port to the port you assigned for WinKey in Router.
- Note:** the other settings – lead, tail, min/max WPM, etc. are set on the CW/WinKey tab in Router.
- Router will override any settings in LOGic.
11. Click OK to save your settings