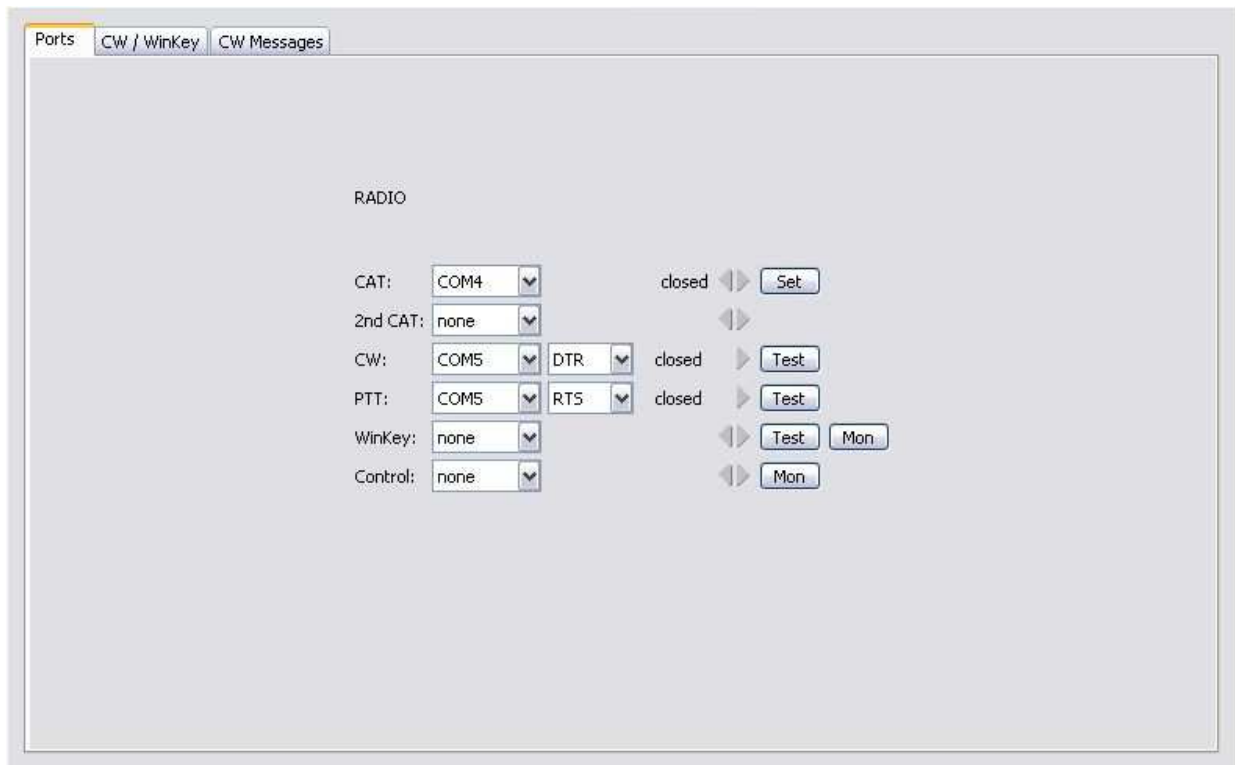


CW Keyer and MixW setup

Router setup:

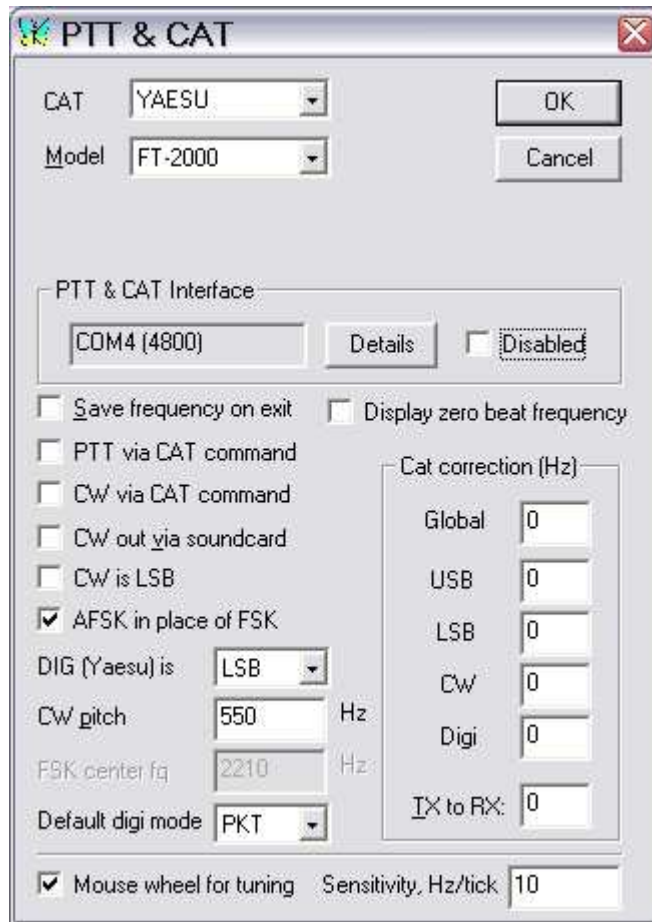
Note: The absolute port numbers do not matter. The key is consistency - the same port number must be used for a specific function every time it is used.

1. Assign radio control to a virtual COM port.
2. MixW does not use WinKey properly. Do not assign a port for WinKey.
3. Assign a port to be used for MixW CW output
4. You may assign a port for PTT if you are using Mix W to control PTT.

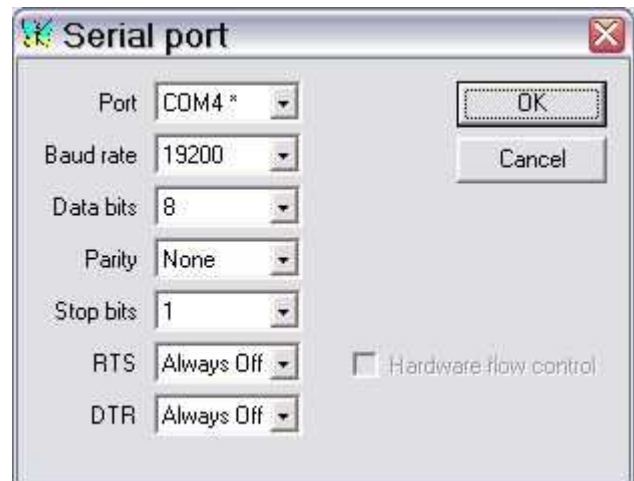


5. Configure your own default settings for WinKey on the CW/Winkey tab. These settings will be used when MixW is not running. It is most convenient to make the stand-alone (Router) defaults the same as the parameters used in MixW.
6. Save settings to a preset by selecting menu **Preset | Save as**. Choose a position and name it MixW.

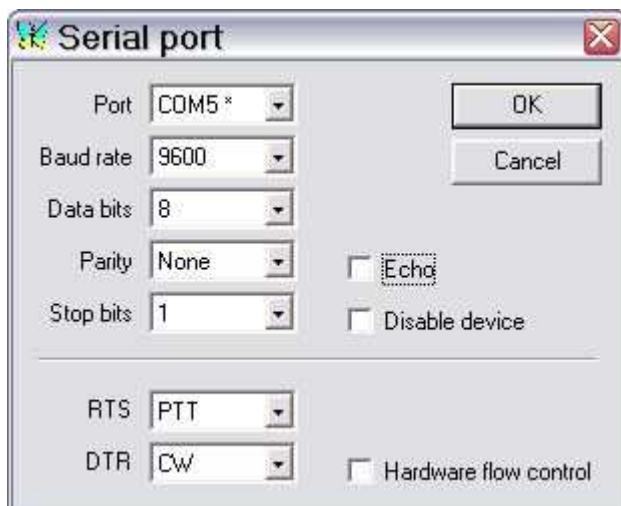
MixW setup:



1. Click **Configure | TRCVR CAT/PTT**
2. Select your radio and configure the radio specific mode settings.
3. Click on the **Details** button and select the same virtual serial port you assigned for Control on Router's Ports tab.
4. Set the Baud rate, Data bits, Parity, Stop bits to match your transceiver requirements.
5. Disable handshaking, PTT and CW on the CAT port.



6. Click **Configure | Secondary PTT Port | Port Settings**
7. Select the same virtual port you specified for CW and PTT on Router's Ports Tab



CW settings

RX frequency: 550 Hz

TX frequency: 550 Hz

TX speed: 25 wpm

☐ Use WinKey pot to control speed

Rx Algorithm: MixW1.45

CW paddle: None/RigExpert

Character set: English

Weight correction: 0

PTT delays, ms

PTT ON: 10 PTT OFF: 100

☐ QSK PTT OFF: 0

Numbers:

☒ 0 as T

☐ 1 as A

☒ 9 as N

☐ Skip leading 0

☐ Reverse buttons

☐ Auto TX

☐ Disable PTT output

OK

Cancel

8. Select CW in MixW (Mode CW) and then select Mode Settings.
9. Configure your transceiver RX Frequency (audio tone), PTT lead time, PTT tail time and QSK or PTT operation.