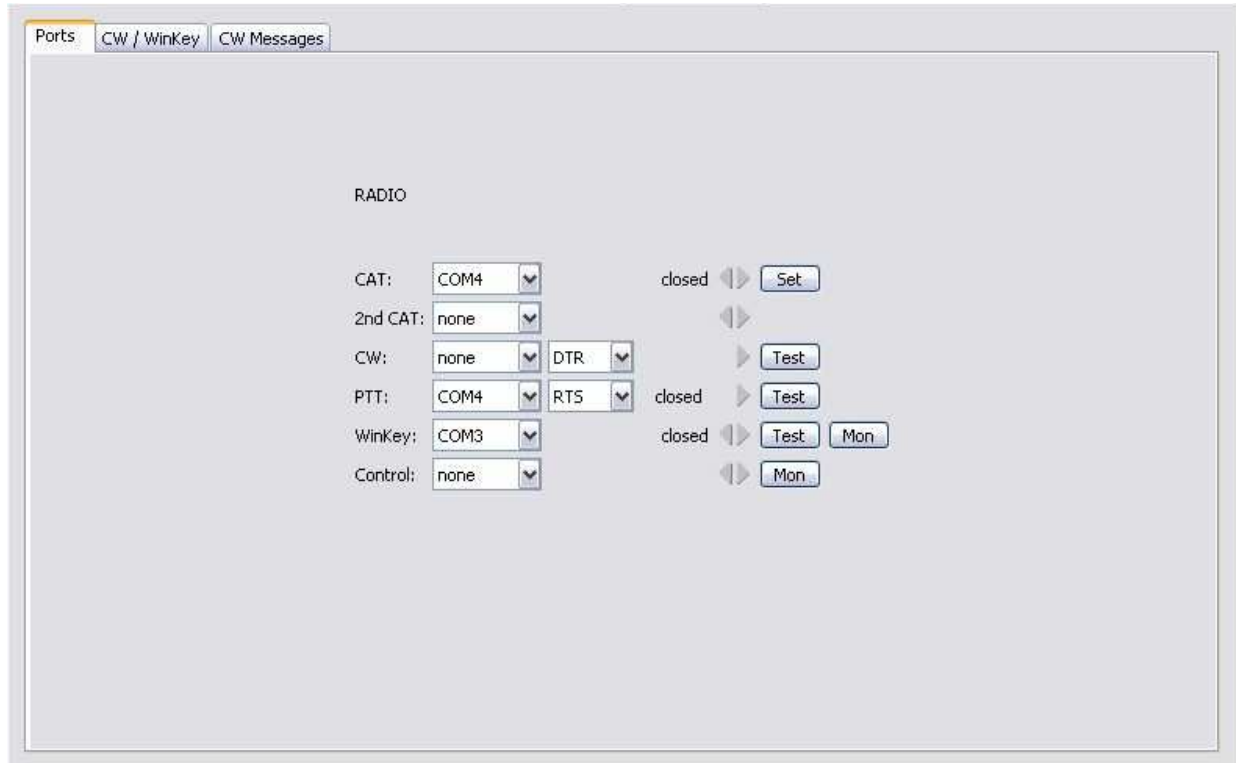


microHAM CW Keyer and N1MM Logger setup

Router setup:

Note: The absolute port numbers do not matter. The key is consistency - the same port number must be used for a specific function every time it is used.

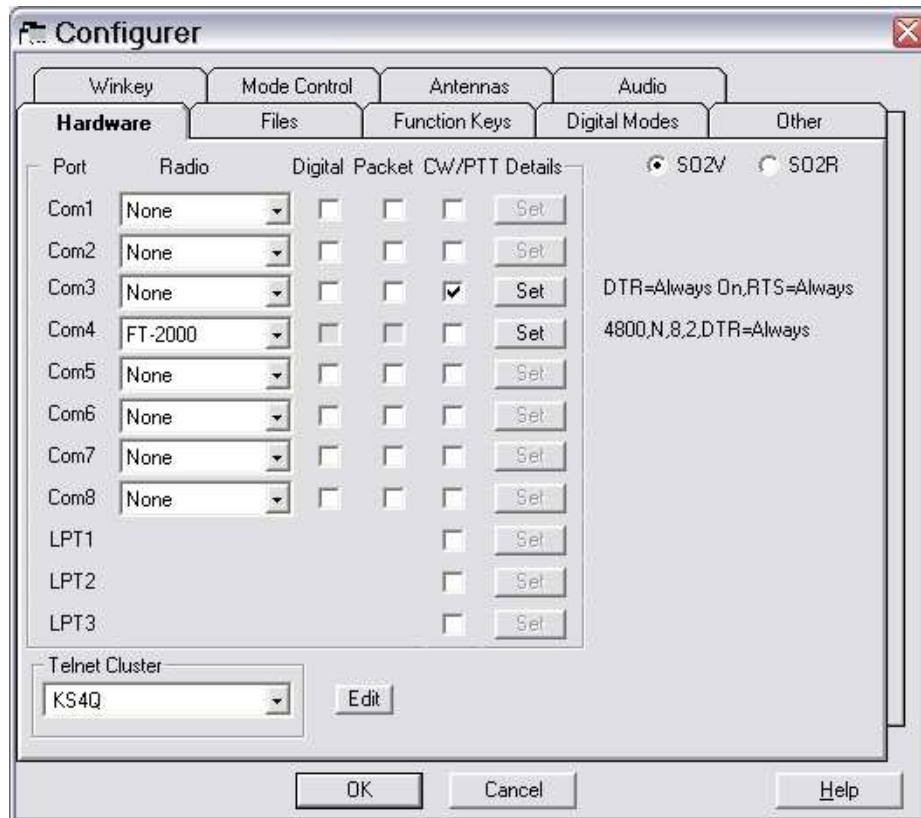
1. Assign the radio control virtual COM port.
2. Assign a port for WinKey



3. Save settings to a preset by selecting **Preset | Save as**. Choose a position, name it N1MM and click **OK**.

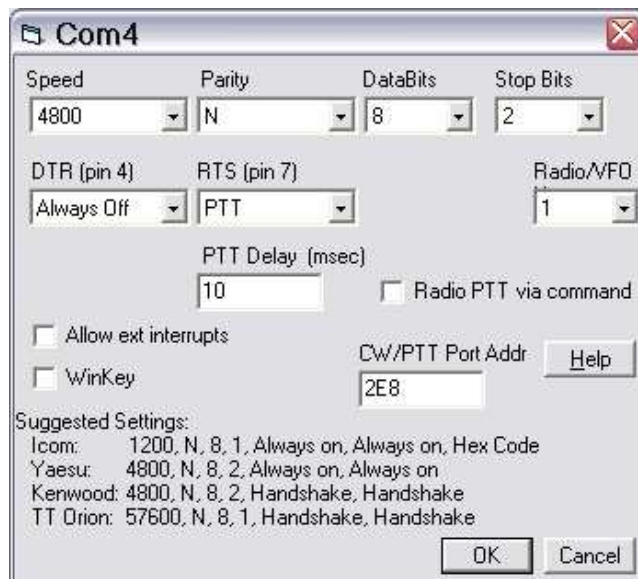
N1MM setup:

1. Click **Config | Configure Ports, Telnet Addresses, Other ...**

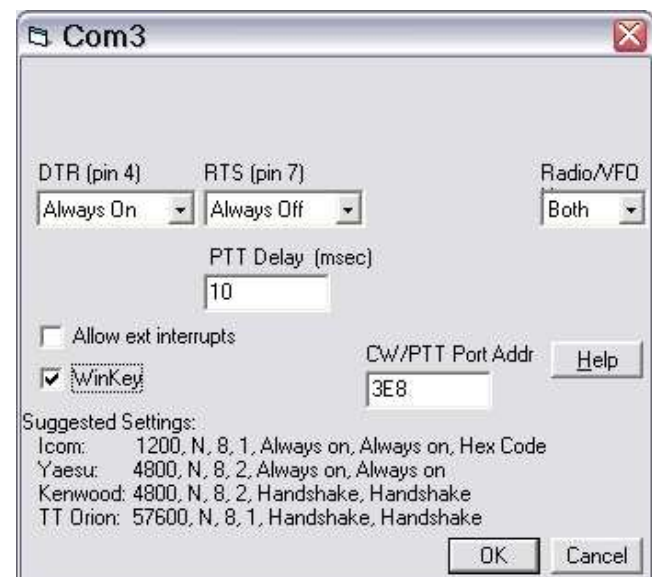


2. Assign the radio to the virtual COM port you used in Router's Ports tab

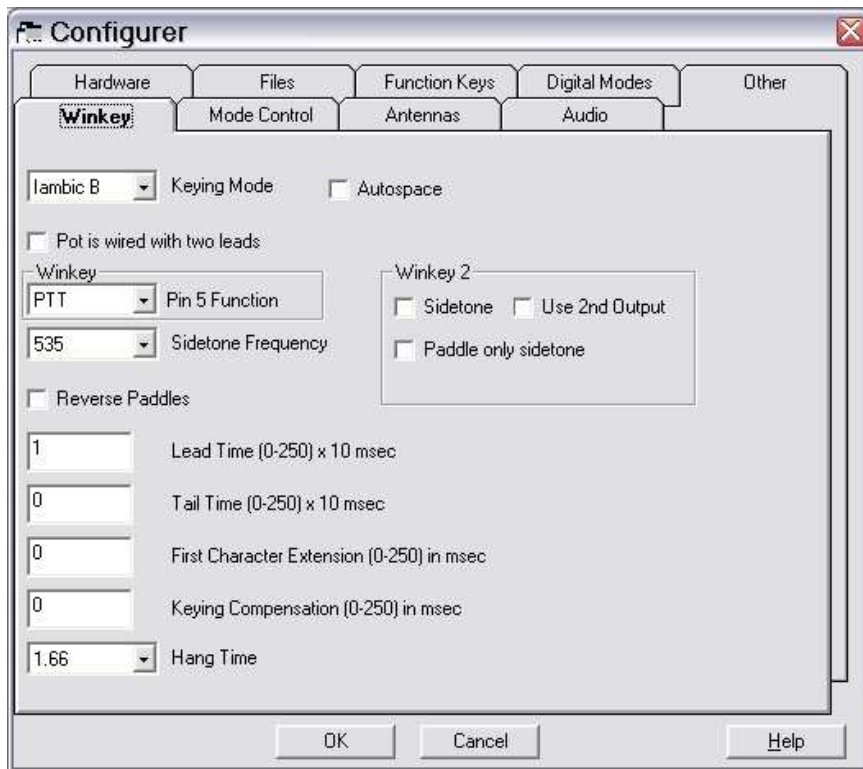
3. Assign a port for CW (WinKey)



4. For the radio port click **Set** and set the communication parameters required by your radio.



5. For the CW Port click **Set**, check the **WinKey** box and set Radio/VFO to **Both**.



6. Configure WinKey using the WinKey tab.
7. Pin 5 Function should be PTT unless you are using QSK
8. Lead Time should be at least 1
9. Set the other parameters to your personal preferences.

It is generally best if the WinKey parameters are as close as possible to those set in Router.