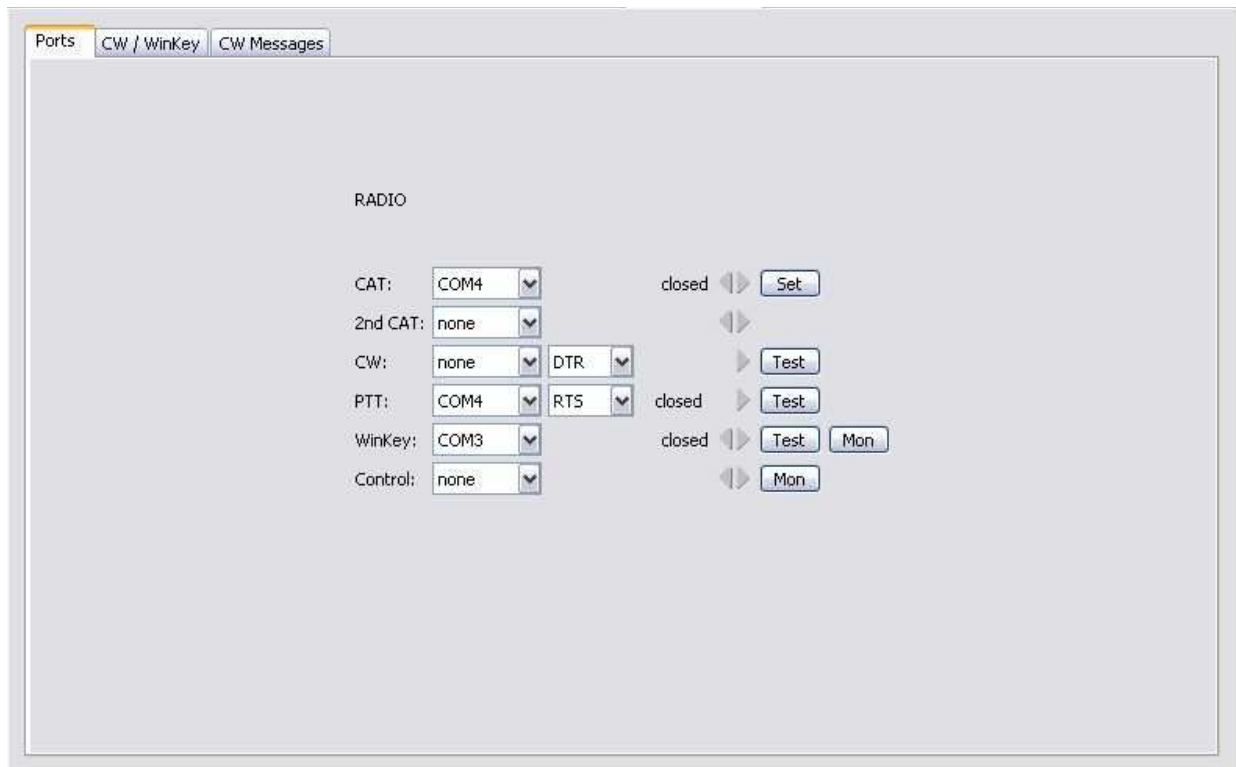


CW Keyer and Win-Test Setup

Router setup:

Note: The absolute port numbers do not matter. The key is consistency - the same port number must be used for each function in Router, Win-Test and MMTTY.

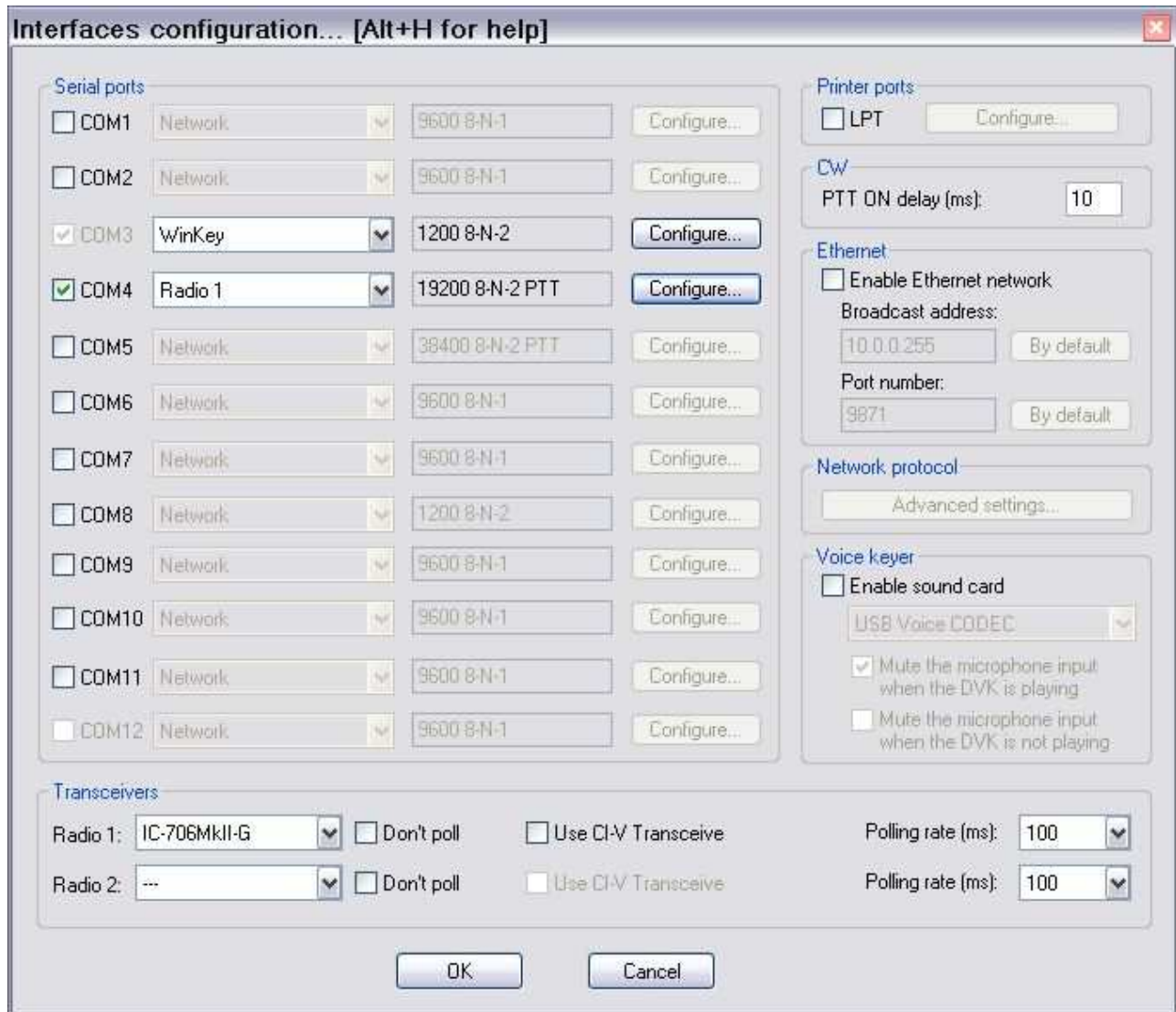
1. Assign the radio control virtual COM port. Click the **Set** button and select your radio from the drop down box.
2. Set PTT to RTS and assign the same port you used for CAT.
3. Assign a port for WinKey



4. Select PTT or QSK on the **CW/WinKey** tab.
5. Save settings to a preset by selecting menu **Preset | Save as**. Choose a position and name it Win-Test.

Win-Test setup:

1. Click **Options | Configure Interfaces**



The 'Interfaces configuration...' dialog box is shown. It has a title bar with '[Alt+H for help]'. The 'Serial ports' section lists COM1 through COM12. COM4 is selected with a checkmark and configured for 'Radio 1' at '19200 8-N-2 PTT'. The 'Configure...' button for COM4 is highlighted. Other sections include 'Printer ports' (LPT), 'CW' (PTT ON delay: 10 ms), 'Ethernet' (Enable Ethernet network, Broadcast address: 10.0.0.255, Port number: 9871), 'Network protocol' (Advanced settings...), and 'Voice keyer' (Enable sound card, USB Voice CODEC, Mute microphone input options). The 'Transceivers' section shows 'Radio 1' as 'IC-706MkII-G' and 'Radio 2' as '---'. Both have 'Don't poll' checked and 'Use CI-V Transceive' unchecked. Polling rates are set to 100 ms. 'OK' and 'Cancel' buttons are at the bottom.

2. Check the port you chose for CAT and PTT. Set the interface to Radio 1.
3. Click "Configure" and set the port properties for your transceiver.
4. Set DTR to Always Off, and RTS to PTT.
5. Set Active with: Radio 1



The 'COM4 properties' dialog box is shown. It has a title bar with a close button. The 'Port properties' section shows 'Bits per seconds: 19200', 'Data bits: 8', 'Parity: None', and 'Stop bits: 2'. The 'Options' section shows 'DTR (pin 4): Always OFF', 'RTS (pin 7): PTT', and 'Active with: Radio 1'. There is a button for 'IC-706MkII-G default settings'. 'OK' and 'Cancel' buttons are at the bottom.

6. Check the port you set for WinKey and set the interface to WinKey
7. Click "configure" and set the port properties to 1200, 8N2.
8. Set Options to:
DTR= Always On
RTS = Always Off

