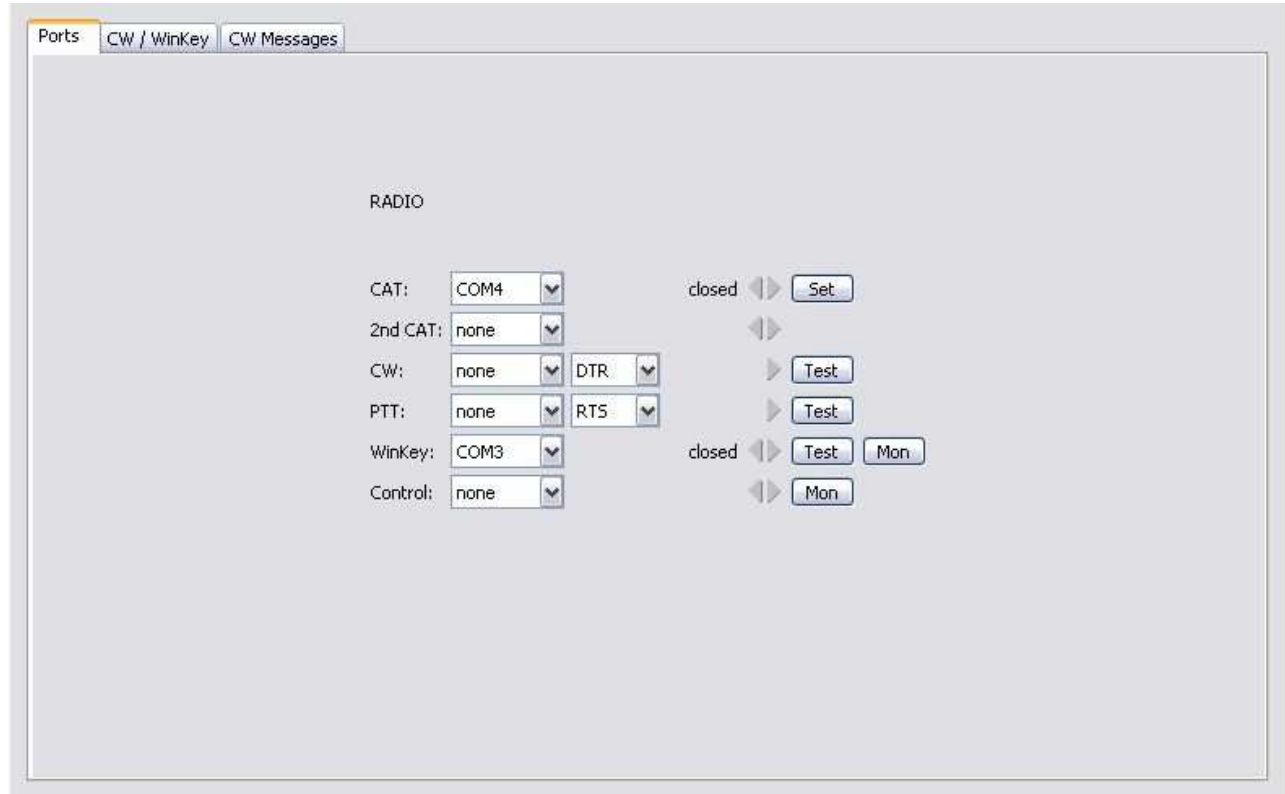


CW KEYER and WriteLog setup

Router setup:

Note: The absolute port numbers do not matter. The key is consistency - the same port number must be used for a specific function every time it is used.

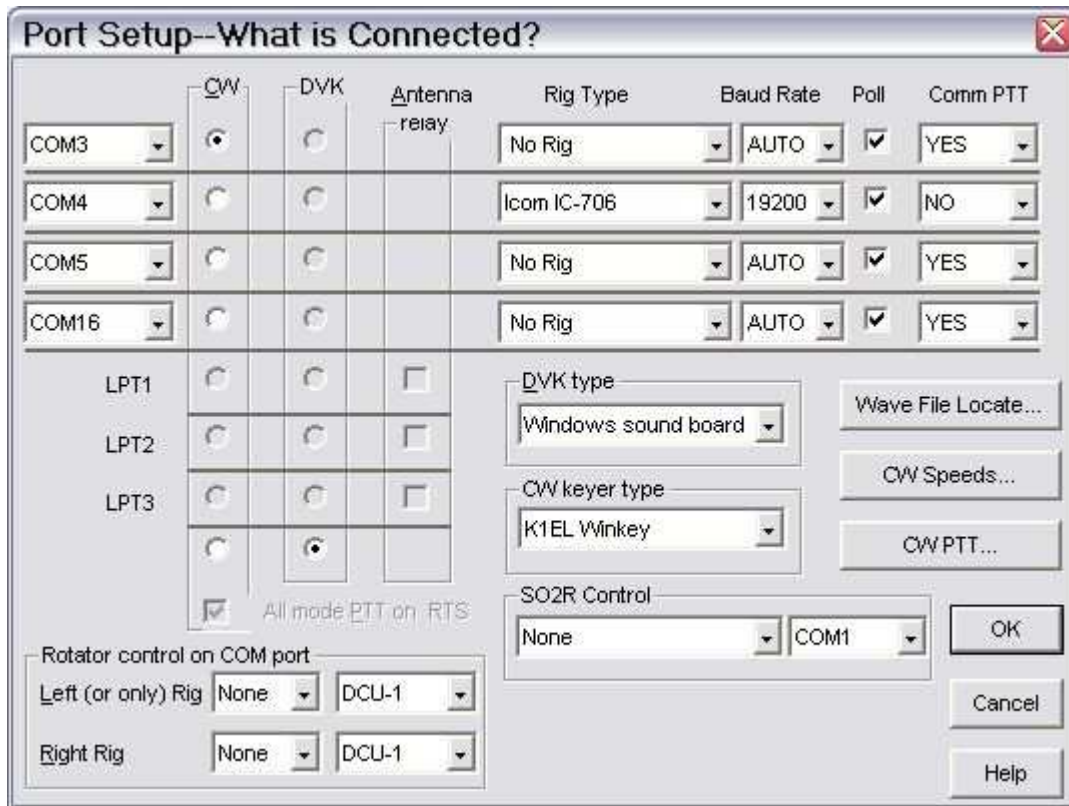
1. Assign the radio control virtual COM port.
2. Assign a port for WinKey



3. Save settings to a preset by selecting menu **Preset | Save as**. Choose a position and name it WriteLog.

WriteLog setup:

1. Click **Setup | Ports ...**

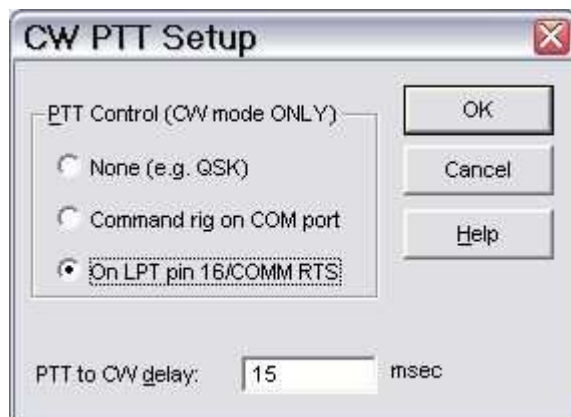


The 'Port Setup--What is Connected?' dialog box is used to configure the connection for various ports. It features a table for COM ports and several configuration sections.

	CW	DVK	Antenna relay	Rig Type	Baud Rate	Poll	Comm PTT
COM3	<input checked="" type="radio"/>	<input type="radio"/>		No Rig	AUTO	<input checked="" type="checkbox"/>	YES
COM4	<input type="radio"/>	<input type="radio"/>		Icom IC-706	19200	<input checked="" type="checkbox"/>	NO
COM5	<input type="radio"/>	<input type="radio"/>		No Rig	AUTO	<input checked="" type="checkbox"/>	YES
COM16	<input type="radio"/>	<input type="radio"/>		No Rig	AUTO	<input checked="" type="checkbox"/>	YES

Below the table, there are sections for LPT ports (LPT1, LPT2, LPT3) with CW, DVK, and Antenna relay checkboxes. A checkbox for 'All mode PTT on RTS' is checked. The 'Rotator control on COM port' section has dropdowns for 'Left (or only) Rig' (None) and 'Right Rig' (None), both with 'DCU-1' selected. The 'DVK type' is set to 'Windows sound board'. The 'CW keyer type' is set to 'K1EL Winkey'. The 'SO2R Control' section has dropdowns for 'None' and 'COM1'. Buttons for 'Wave File Locate...', 'CW Speeds...', 'CW PTT...', 'OK', 'Cancel', and 'Help' are also present.

2. Select K1EL WinKey as the CW keyer type
3. Assign CW to the WinKey port you used in Router's Ports tab
4. Select the proper Rig Type and the Port you used for Control in Router's Ports tab.
Be sure to set Comm PTT to OFF – WriteLog should not operate PTT by CAT command.



The 'CW PTT Setup' dialog box is used to configure PTT control for CW mode. It has three radio button options: 'None (e.g. QSK)', 'Command rig on COM port', and 'On LPT pin 16/COMM RTS'. The 'On LPT pin 16/COMM RTS' option is selected. There are buttons for 'OK', 'Cancel', and 'Help'. At the bottom, there is a field for 'PTT to CW delay' set to '15' msec.

5. Select "All mode PTT on CW Port RTS"
6. Click CW PTT. Select PTT or QSK and set the PTT to CW delay.