

# DigiKeyer II and DXLab Suite setup

## Router setup:

**Note: The absolute port numbers do not matter. The key is consistency - the same port number must be used for a specific function every time it is used.**

1. Assign the radio control virtual COM port.
2. Assign a port for WinKey.
3. Assign a port for FSK – check the PTT box.
4. Assign the same port for PTT as you assigned for Control.

The screenshot shows the 'System Settings' window for an Icom IC-706 MkII-G radio. The window has tabs for 'Ports', 'Audio', 'PTT', 'CW / WinKey', 'CW Messages', 'FSK Messages', 'Keyboard', and 'System Settings'. The 'System Settings' tab is active. The window displays the following settings:

Function	Port	Other Settings	Status	Action
CAT	COM4		closed	Set
2nd CAT	none			
FSK	COM6	<input checked="" type="checkbox"/> PTT	closed	Test
2nd FSK	none	<input checked="" type="checkbox"/> PTT		<input type="checkbox"/> invert <input type="checkbox"/> strict bps
CW	none	DTR		Test
PTT	COM4	RTS	closed	Test
2nd PTT	none	RTS	closed	
Foot Switch	none	CTS		<input type="checkbox"/> invert
SQL	none	CTS		<input type="checkbox"/> invert
WinKey	COM3		closed	Test Mon
Control	none			Mon

5. Save settings to a preset by selecting menu **Preset | Save as**. Choose a position and name it DXLab.

## CI-V Commander setup:

1. Click **Config** and select the **Ports tab** ...



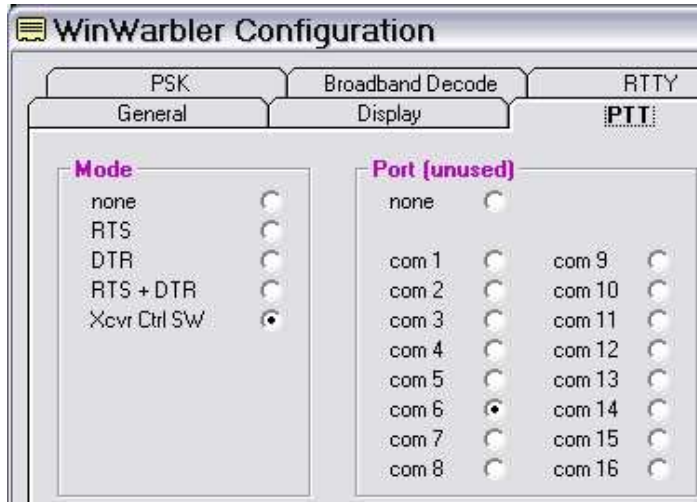
2. Select the virtual COM port you used for control in Router's Ports tab
3. Select the Baud Rate, Parity, Word Length, and Stop Bits settings required by your radio.
4. Set DTR "always off"
5. Set RTS "on to xmit" - this is PTT

## WinWarbler setup:

**Note:** It is important to execute the following steps in order. Otherwise PTT, FSK and CW sharing will not operate properly.

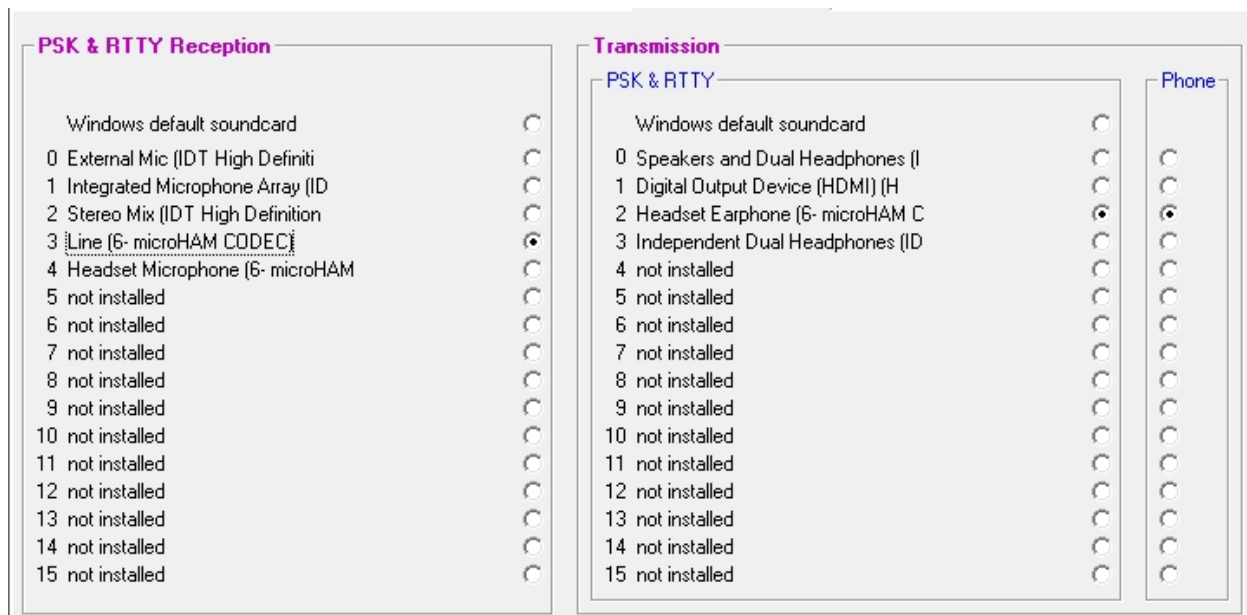
This configuration is for WinWarbler with Commander. To configure and run WinWarbler in stand-alone mode or with another logger, see the separate [\*DigiKeyer II WinWarbler Setup Guide\*](#).

The user has the option to configure WinWarbler for either FSK or AFSK. Configuration information is provided for both options.



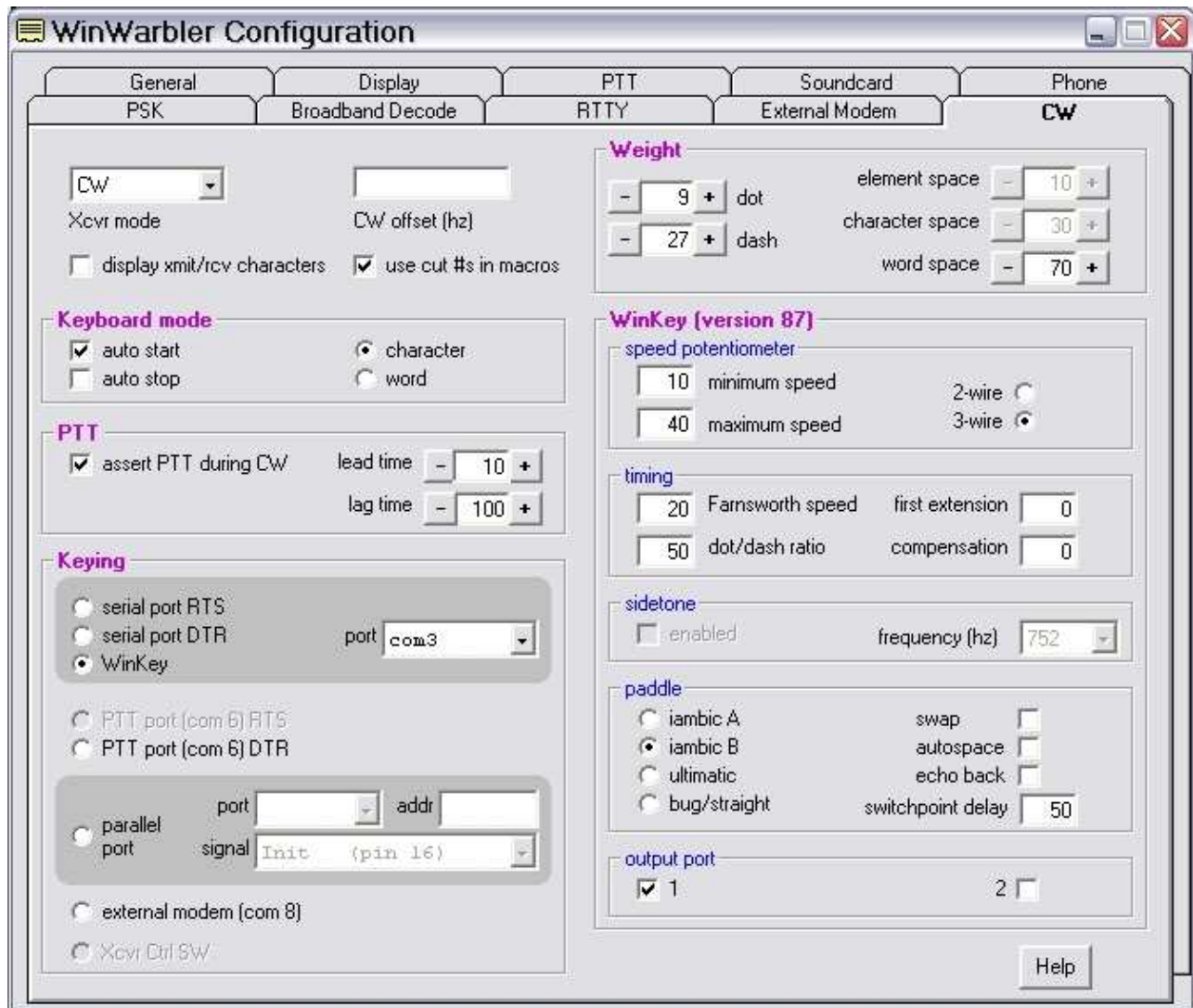
1. Click **Config** and select the **PTT tab** ...
2. Select "Xcvr Ctl SW" as the Mode. WinWarbler will direct commander to assert PTT in Phone (Voice) and PSK modes.
3. Select the port you defined for FSK in the "Port" box. This will be used for MMTTY FSK and PTT.
4. Select the Soundcard Tab
5. Choose Line (microHAM CODEC) for PSK & RTTY Reception and and Headset Earphone (microHAM CODEC) for PSK &

RTTY Transmission. (Note: DigiKeyer II does not support Phone).



## CW setup:

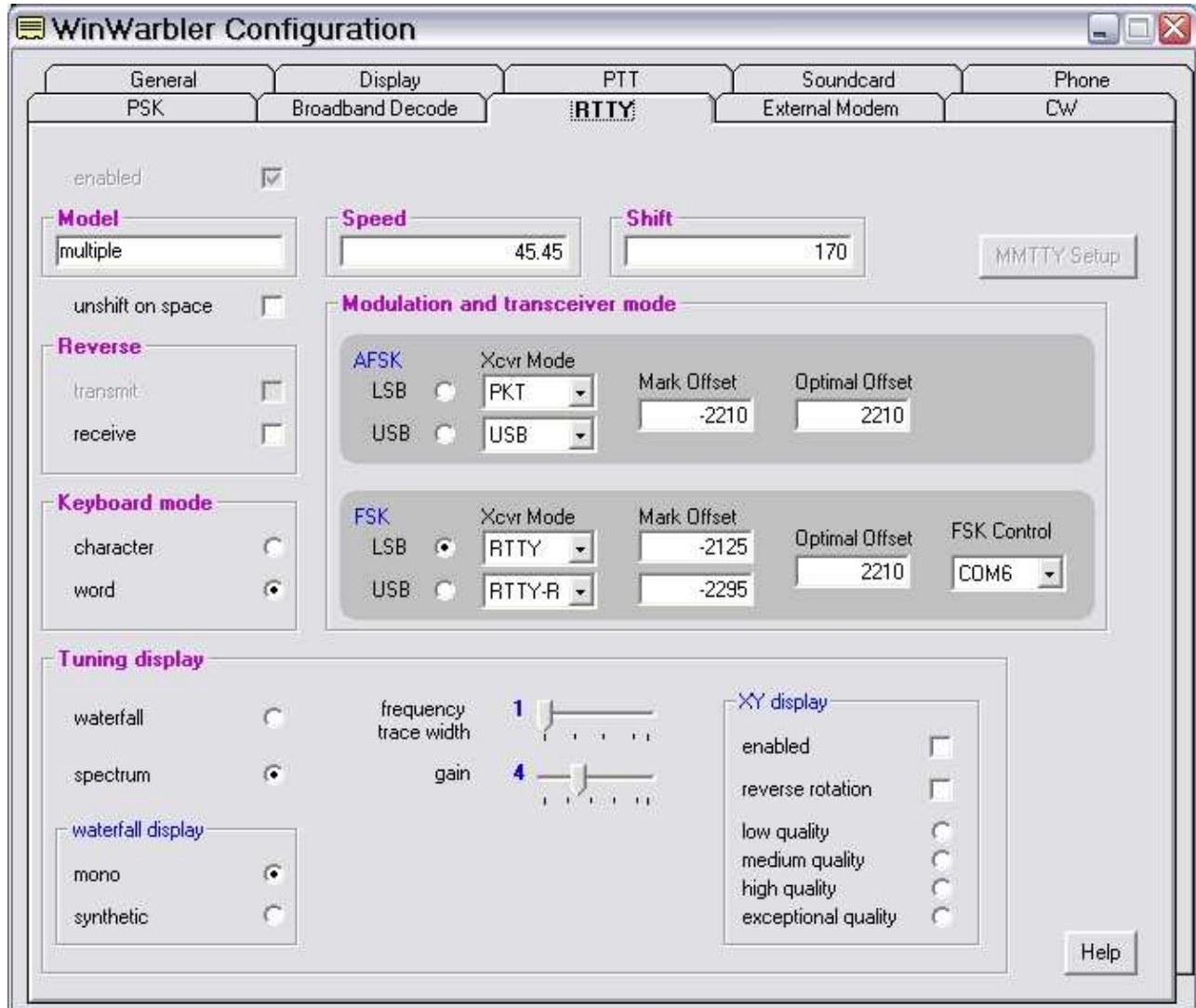
1. Switch WinWarbler to CW Mode
2. Open the WinWarbler's Configuration and select the **CW Tab**.



3. Select **WinKey** in the Keying box and set the Port that you chose for WinKey in Router.
4. Configure the settings you prefer for CW operation including weight, and PTT or QSK operation.

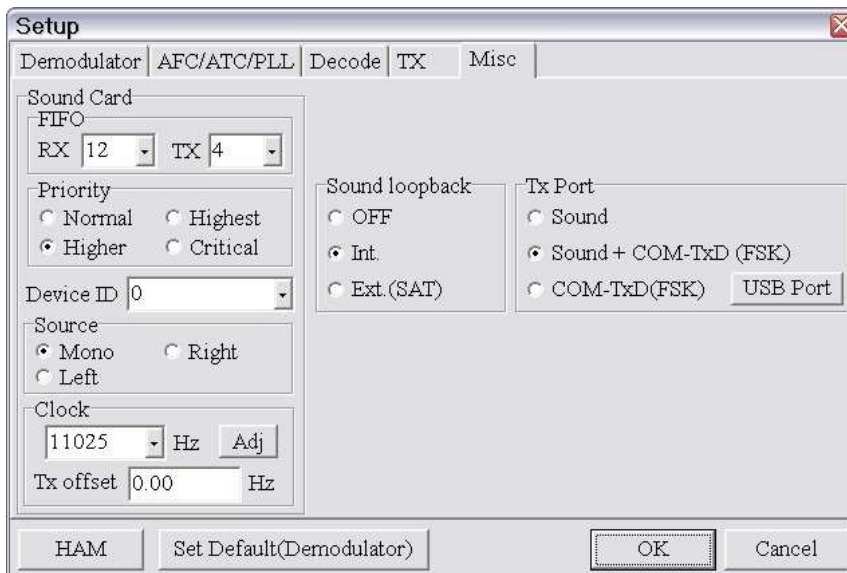
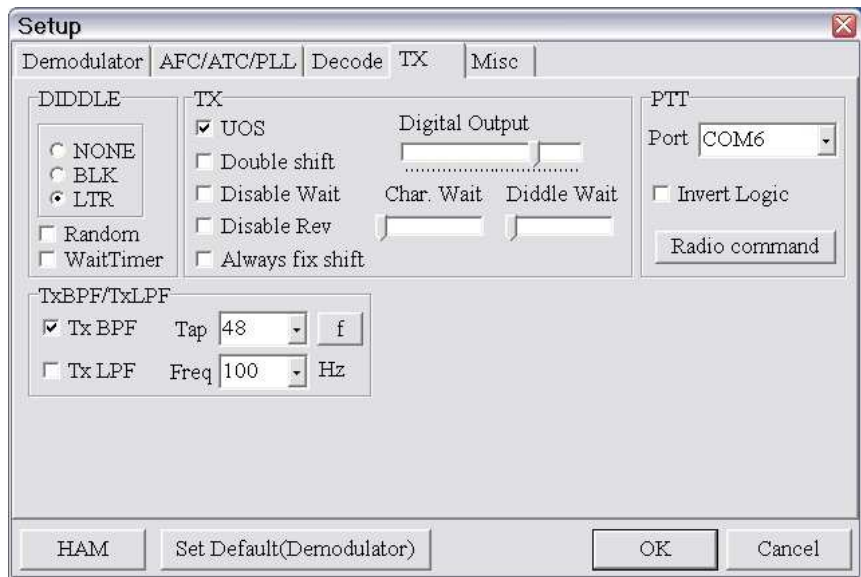
## RTTY/MMTTY setup (FSK):

1. Switch WinWarbler to RTTY mode.
2. Click **Config** and select the **RTTY tab** ...



3. Configure the FSK Settings as needed by your radio
4. Set FSK Control to the port you selected for FSK in Router.

5. Click **Config** and select the **RTTY tab ..**
6. Click on the **MMTTY Setup** button ...
7. Select the **TX Tab ...**
8. Select the Port you configured for FSK in Router's Ports Tab in the PTT box.
9. Select the **Misc Tab ...**



10. Select Source **Left**

11. Set Clock **11025**

12. Select the proper sound card on the MMTTY **Soundcard** tab

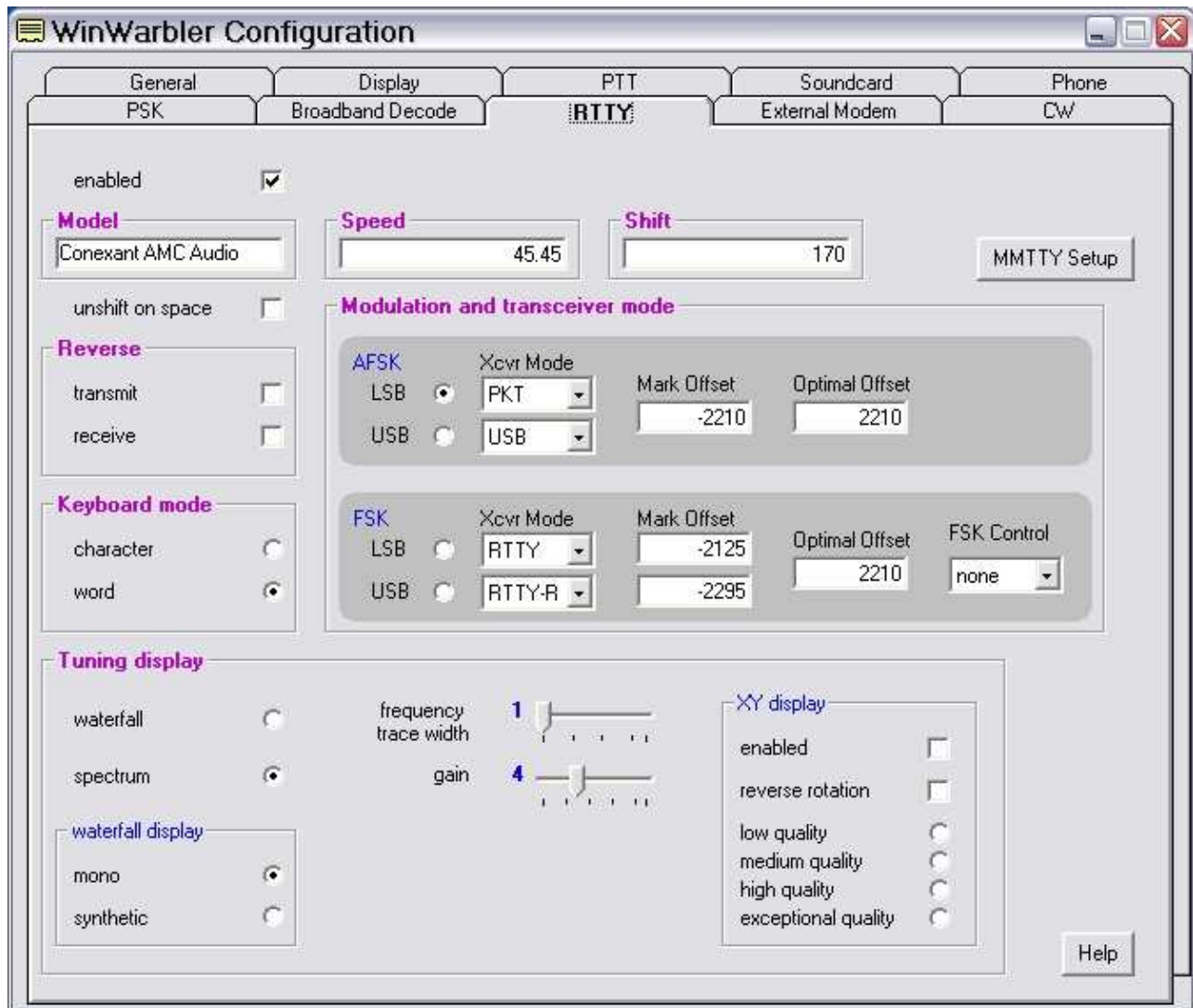
13. Select COM-TxD (FSK) for the TX Port. If you want the option to switch between AFSK and FSK, select Sound + COM-TxD (FSK)

14. Click **USB port** button and choose **C: Limiting speed**



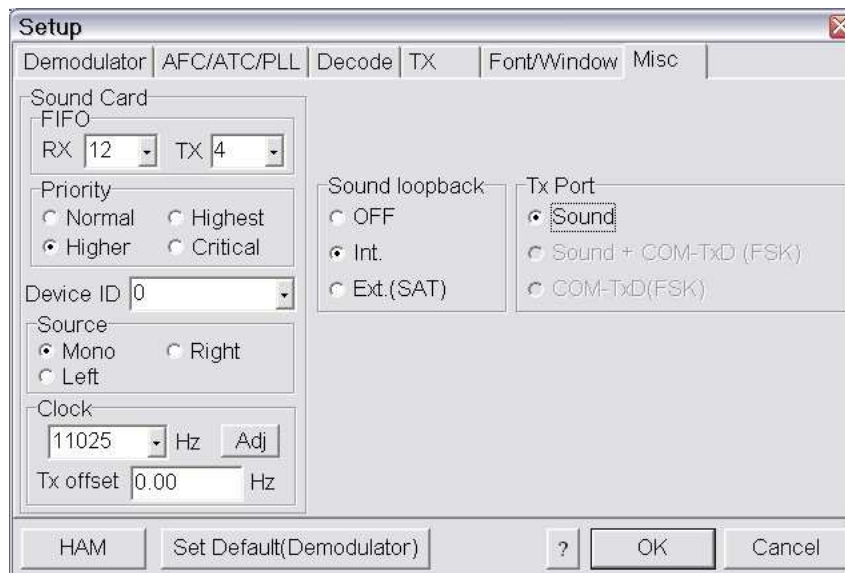
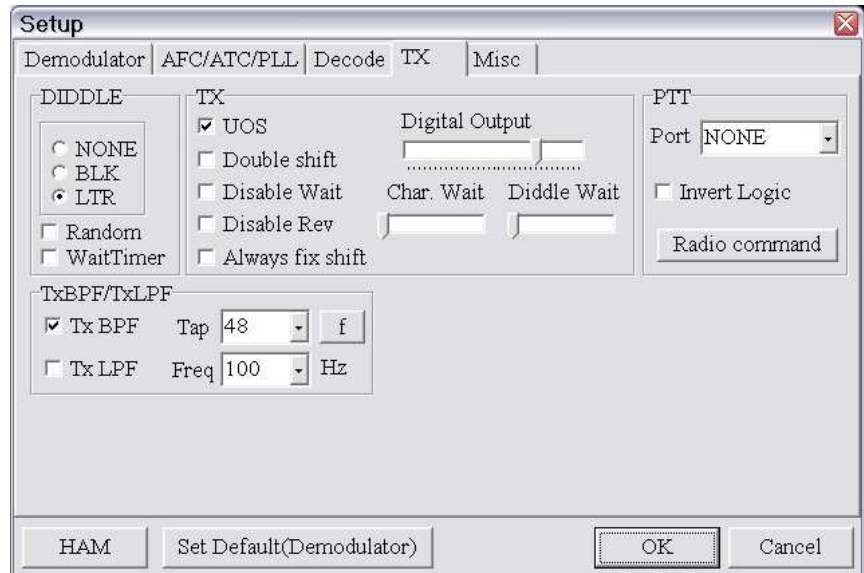
## RTTY/MMTTY setup (AFSK):

1. Switch WinWarbler to RTTY mode.
2. Click **Config** and select the **RTTY tab** ...



3. Configure the AFSK Settings required by your radio.
4. Set FSK Control to None

5. Click on the **MMTTY Setup** button ...
6. Select the **TX Tab** ...
7. Select NONE in the PTT Port box.
8. Choose the **Misc Tab**.



9. Select Source **Left**
10. Set Clock **11025**
11. Select the proper sound card on the MMTTY **Soundcard** tab
12. Select "Sound" as the TX Port.