

DigiKeyer

microHAM

fax: +421 2 4594 5100
e-mail: support@microham.com
homepage: www.microham.com



Version 8.0
1 March 2016

TABLE OF CONTENTS

| CHAPTER | PAGE |
|---|-----------|
| 1. FEATURES AND FUNCTIONS | 3 |
| 2. IMPORTANT WARNINGS | 3 |
| 3. PANEL DESCRIPTION | 4 |
| Front Panel | 4 |
| Rear Panel | 5 |
| 4. INSTALLATION | 6 |
| Preparing for Use..... | 6 |
| Macintosh (OS-X) Installation | 7 |
| Windows Installation | 7 |
| Installing <i>microHAM</i> USB Device Router | 7 |
| Configuring USB Audio Codec | 8 |
| Configuring <i>microHAM</i> USB Device Router | 9 |
| Creating and Using Virtual Ports | 10 |
| 5. <i>microHAM</i> DEVICE ROUTER | 11 |
| Menu: Router | 11 |
| Menu: Preset | 12 |
| Menu: Device | 13 |
| Menu: Virtual Port | 14 |
| Menu: Help | 15 |
| Device Configuration | 15 |
| Ports Tab..... | 16 |
| CAT& 2 nd CAT | 17 |
| FSK & 2 nd FSK | 20 |
| CW | 21 |
| PTT & 2 nd PTT | 22 |
| Squelch | 22 |
| Control..... | 22 |
| Keying Tab..... | 23 |
| Audio | 23 |
| PTT..... | 24 |
| FSK from Keyboard | 24 |
| FSK Messages | 24 |
| 6. SETTING AUDIO LEVELS | 25 |
| 7. EXTERNAL KEYBOARD | 27 |
| 8. PACKAGE CONTENTS | 27 |
| 9. WARRANTY | 28 |
| 10. SPECIFICATIONS | 28 |
| 11. SYSTEM CONSIDERATIONS | 29 |
| 12. HARDWARE SPECIFICATIONS | 29 |
| 13. DECLARATION OF CONFORMITY | 30 |
| APPENDIX A – CONNECTORS | 31 |
| APPENDIX B – RFI Considerations | 32 |
| APPENDIX C – Tracking | 33 |
| APPENDIX D – Cables and Bridges | 34 |

1 - FEATURES AND FUNCTIONS

- **No Serial or Parallel port necessary, just one USB port**
- **Complete "Computer <-> Radio" isolation**
 - bidirectional transformer isolation of audio signals
 - optical isolation of ALL digital signals: Radio Control, CW, PTT, FSK
- **Internal USB sound capability**
 - *Wide range audio level: works with transceiver levels from 100 mV to 1.5 V*
 - *Extremely low noise floor: as low as 0.7 mV effective*
 - *High dynamic range: 84 dB typical, 82 dB minimum*
- **Compatible with all MS Windows based logging or control software**
 - the special microHAM "USB Device Router" program creates virtual COM ports for full operation with standard Windows applications.
 - customizable presets allow instantly changing DIGI KEYER parameters to match the program currently in use
- **Integrated computer control port for all radios CI-V, FIF-232, IF-232, RS-232**
 - fully supports Icom, Kenwood, TenTec, Yaesu and other radios
 - no separate level converter required
- **Squelch input for additional software control**
- **Strong RFI immunity**
 - integrated chokes and filters for best RFI immunity
 - advanced shielding and circuit design for RFI product suppression
- **Connections:**
 - Computer – USB
 - Radio - DB15
- **Front panel LEDs for easy visual feedback of CW, PTT, SQL, POWER and radio control data**
- **Front panel adjustable Transmit and Receive audio levels**
- **USB sound support built-in to the Operating System**
 - does not require special drivers or limit your choice of applications.
 - Supported under Windows, Apple OS 10 and LINUX
- **Metal/Aluminum case, powder coated and silk screened**
- **Free, no time limit, on-line firmware/software upgrades**

2 - IMPORTANT WARNINGS

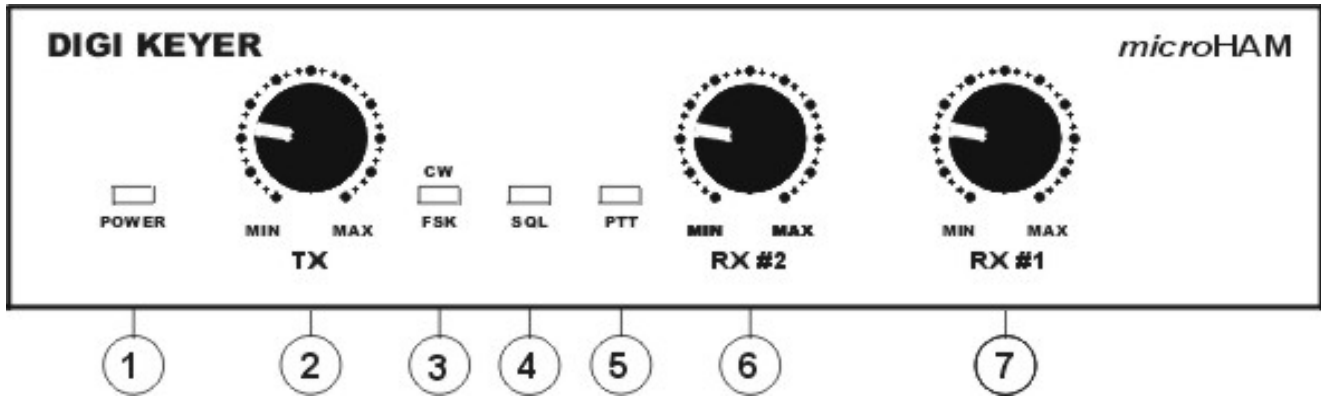
You must set the CAT level jumpers inside the DIGI KEYER before using it for the first time.

If you power DigiKeyer from an external power supply ALWAYS check the polarity of the external 13.8 V supply.

If your radio includes upgradeable firmware, DO NOT perform any upgrade through DigiKeyer.

3 - PANEL DESCRIPTION

FRONT PANEL



(1) – POWER

YELLOW color indicates when unit is powered

(2) – TX

Adjusts transmit audio level (drive)

(3) – CW/FSK

RED color indicates when CW is active, GREEN indicates when FSK is active

(4) – SQL

GREEN color indicates when squelch is active

(5) – PTT

RED color indicates when PTT is active

(6) – RX #2

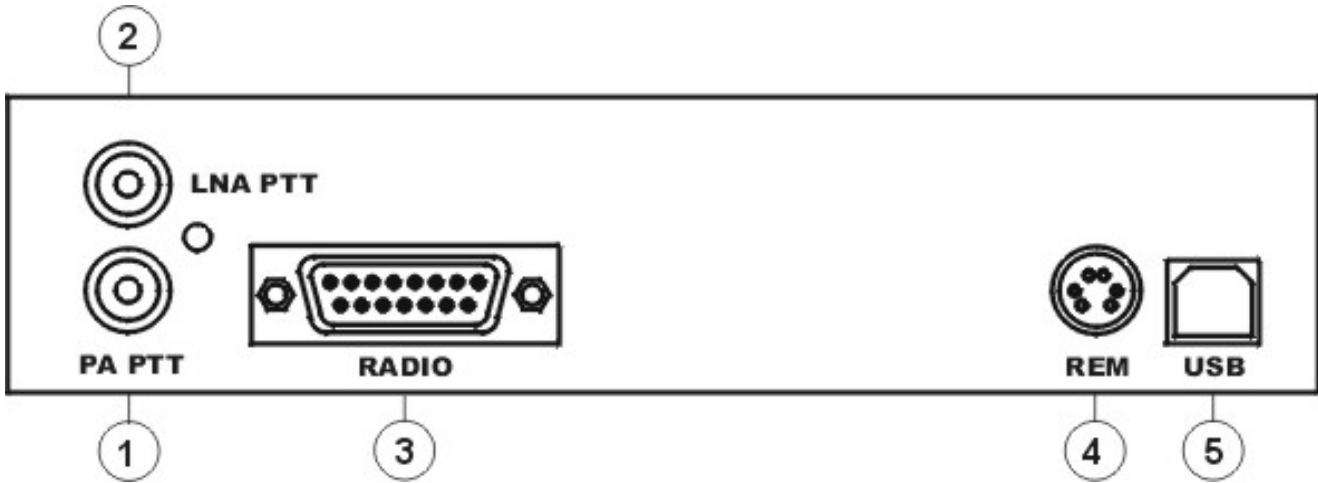
Adjusts receive audio level from the second (sub-, aux-, etc.) receive channel.

(7) – RX #1

Adjusts receive audio level from the main receive channel.

REAR PANEL

All connectors for connecting the computer, radio and accessories are located on the rear panel.

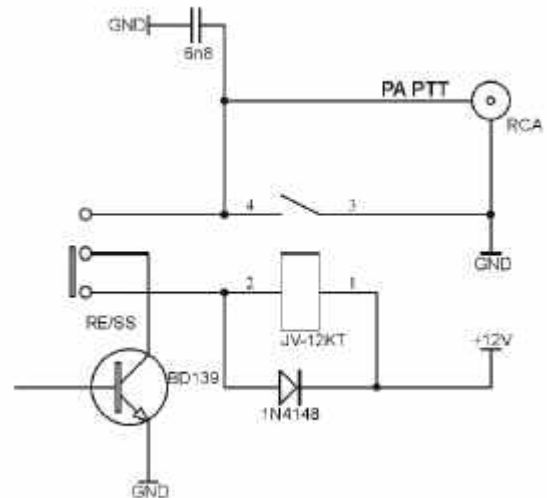


(1) – PA PTT: PTT output for Power Amplifier
 Ground during transmit
 TIP - Signal
 SHELL - Ground

(2) - LNA PTT: Control output for Low Noise Amplifier
 Ground during transmit
 TIP - Signal
 SHELL - Ground

If the jumper is in SS position, open collector switching transistor is connected to the PAPTT or LNAPTT output jack.

The transistor can switch up to 48V @ .8A. This position is appropriate for modern Power Amplifiers with electronic keying and LNA bypass relays .



Check manual of your PA and LNA to be sure the power requirements do not exceed the transistor rating otherwise set the appropriate jumper to the RE position. This position connects the relay contact to the output jack. Maximum rating for the relay is:48V AC/DC @ 1A.

NOTE: If you are not sure about keying voltage of your amp on LNA, use the RE position.

(3) - RADIO: DB15F connector for radio interconnection – a detailed description is in Appendix A

(4) - REM: MiniDIN6 for PS/2 keyboard or numeric keypad.

(5) - USB: USB B connector for computer connection. Connect the supplied USB A-B cable.

4 - INSTALLATION

Installing DIGI KEYER consists of several steps:

- 1) prepare DIGI KEYER to work with your radio
- 2) install microHAM USB Device Router (the control and interface software) configure the Windows USB Audio Device
- 3) configure Router

Preparing DigiKeyer for Use

1. Remove the top cover from the DIGI KEYER and set the CAT jumpers as shown in the following chart. The CAT interface jumpers must be configured to select the proper level for each radio type.

RS-232 levels:

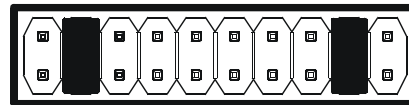
All transceivers with RS-232 CAT ports.



RS232

IF-232 levels:

Kenwood: TS-140, 440, 450, 680, 690, 711, 790, 811, 850, 940, 950



IF232

FIF-232 levels:

Yaesu: FT-100, 736, 747, 757GXII, 767, 817, 840, 857, 890, 897, 900, 980, 990, 1000, 1000D



FIF232

CI-V levels:

Icom: all radios except 7700 & 7800 with RS-232
TenTec: all radios with 3.5 mm connector



CI-V

NOTE: the CAT interface is not configured at the factory.

2. Plug the DB15M on the radio cable set into the DB15 connector on the rear panel of the DIGI KEYER and plug ALL connectors from the cable set to the appropriate jacks at the rear panel of your transceiver. Each connector on the radio interface cable is marked same as the matching jack on your transceiver.
3. If the radio cable ends with leads for external power, connect these leads to a 12-16V DC power supply.

Be sure to observe the proper polarity.

4. Locate but do not connect the USB cable from DigiKeyer to your computer.

NOTE: If you will be installing on a Windows computer, skip to "MICROSOFT WINDOWS (Windows 2000, XP, Vista, & Windows 7) INSTALLATION."

Mac OS X INSTALLATION

1. Insert the microHAM CD in your CDROM/DVD drive and navigate to Drivers/OS-X or use your web browser to go to <http://www.ftdichip.com/Drivers/VCP.htm> and download the latest driver image for OS-X.
2. Open FTDIUSBSerialDriver_v2_2_18.dmg by clicking on it.
3. For OS-X 10.4, 10.5 or 10.6 open FTDIUSBSerialDriver_10_4_10_5_10_6 and follow the instructions to install.
4. Plug in the USB cable
5. Turn on the radio or external power supply.
6. Follow the instructions for your software to configure the application to work with DigiKEYER.



MICROSOFT WINDOWS INSTALLATION Installing *microHAM* USB Device Router



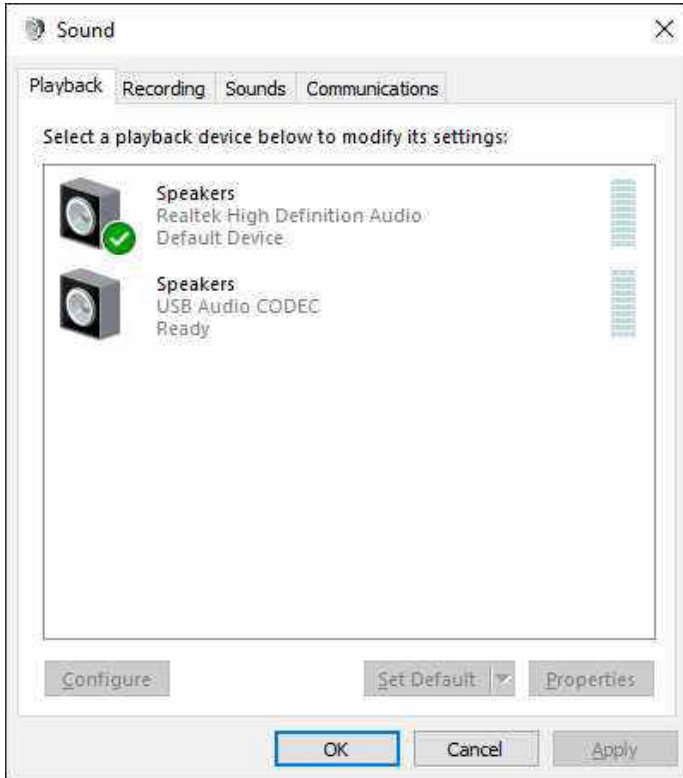
3. The Windows setup utility will start and ask into which folder Router and its supporting files should be installed. Note: unless you have a very strong reason to install Router elsewhere, please accept the default location.
4. When the Router installation is completed, plug in the USB cable when instructed, click "Finish" to launch Router for the first time and proceed to configuring Router for your station and software.

1. To install Router click on the Install USB Device Router link on the installation CD or download the most recent installation package from the web site: www.microHAM.com/downloads.html.
2. If you download an updated package, right click on "urouter_release_xx_xx.exe" (xx_xx is version) and choose "Run as administrator" to start installation.



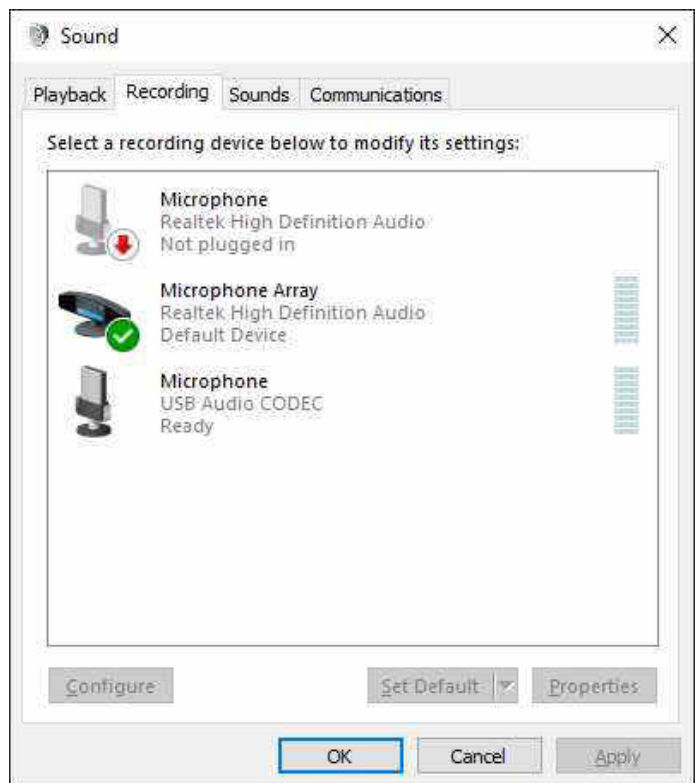
Configuring USB Audio CODEC

Windows will automatically install the USB Audio Device driver to support the USB Audio CODEC in DIGI KEYER.



Windows automatically selects any newly installed audio device as the default device for Sound Playback and Sound Recording. This is undesirable as Windows Sounds would be played through DIGI KEYER and onto the air!

Open "Sound" in the Control Panel or right click on the Speaker Icon on the Taskbar and select "Playback." Reset the Default Device to Speakers of your computer's primary sound device.



Select "Recording." Reset Default Device and Default Communications Device to an input on the internal (primary) sound card in your computer.

Double click on "Microphone" USB Audio Codec device, click on Advanced tab and verify that the Default Format is set to 2 channel.

Configuring *microHAM* USB Device Router

The microHAM USB Device Router (Router) program provides a Windows compatible *configuration tool* for *microHAM* USB Devices (DIGI KEYER as well as *microKEYER*, CW Keyer and USB Interfaces) and *software interface* to other Windows applications (loggers, digital mode software, etc.). The software interface is provided as *Virtual Serial Ports*.

To configure and use DIGI KEYER with Windows compatible application programs it is necessary to have installed the USB driver, started the Router, and applied power to DIGI KEYER by turning on the attached radio or external power supply. Router is then configured to match the requirements of the application (logger or digital mode) software.

DIGI KEYER Status



When the USB driver is installed correctly and DIGI KEYER is powered from a radio or external 12V DC supply Router will show a device tab with a **GREEN** check beside the device name (DIGI KEYER).



When Router shows a **YELLOW** "X" instead of a green ✓, it means the USB driver is correctly installed but DIGI KEYER is not receiving power from the radio or external supply.



When Router shows a **RED** "X" instead of a green ✓, it means the device is disconnected and Router does not see the USB part of DIGI KEYER.

This happens when the USB cable is unplugged or the USB driver is not correctly installed.

Initial Setup



Router must be used to configure DIGI KEYER for proper operation. The device configuration tab (in the red rectangle) is used to setup each part of the DIGI KEYER – virtual ports for communicating with the application (Ports), audio levels, PTT and keyboard FSK (Keying), and stored FSK messages (FSK Messages).

Creating and Using Virtual Serial Ports

microHAM Router provides a set of virtual serial ports which allow Windows applications (loggers and digital software) to work with DIGI KEYSER just as they would work with "real" (hardware) serial ports.

In order to use these virtual Ports, you must first create the ports and then assign a function (radio control, PTT, CW, FSK, etc.) to each virtual port.

DO NOT define a port that is already in use (for example, COM1 or COM2 which are hardware ports on many motherboards) or a virtual port used by another USB device. Even though Router will not allow using a COM port number which is already present in the system (like hardware COM ports or internal modems), sometimes these ports are hidden. If a device which also uses virtual serial ports (external USB devices, bluetooth devices, mobile phones, PDA etc ...) is not connected to the computer when creating virtual ports in Router, the ports can overlap and will not work properly when you connect such device.

IMPORTANT WARNING: Before you start creating virtual COM ports, attach all external devices you use with the computer and allow them to connect to the system. Restart Router and then create the virtual COM ports.

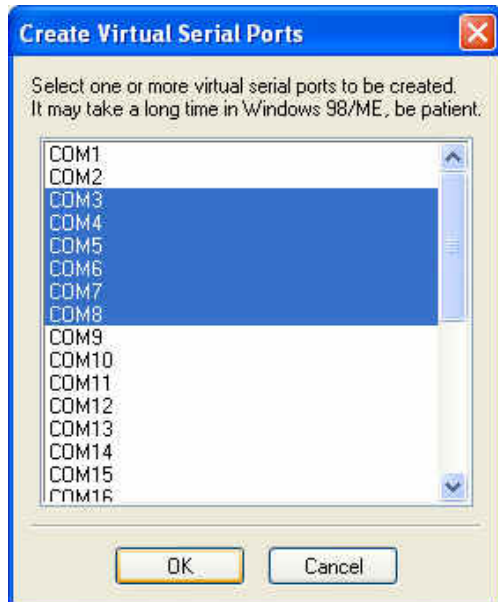
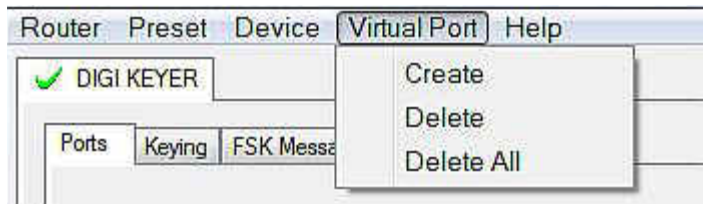
Virtual ports are created from the Virtual Port menu.

Create - Creates virtual COM ports. It is possible to select more than one port at a time by holding the *Ctrl* key on keyboard and clicking on COM port numbers. Creating virtual ports may take a long time (several tens of seconds), be patient.

Delete - Deletes any single virtual port.

Delete All - Deletes all previously created virtual ports.

Do not delete a virtual port until all applications using that port have been closed.



TIP: It is possible to select multiple ports at one time by holding *Control* key on keyboard and clicking on the COM port numbers.



TIP: If you have uninstalled another device which used virtual ports and Router does not offer the released COM port number, you will need to reset the virtual port bus. You can do this by deleting all the virtual ports at once. Select "Virtual Port | Delete All" and create the ports again. Any missing port number should appear.

5. *microHAM* USB DEVICE ROUTER ROUTER MENU

Default Router Settings: used to completely reset Router to factory (default) settings.

"Default" removes all device tabs and deletes all stored configuration data, including all user presets. from the Windows Registry.



TIP: DigiKEYER can be reset to the factory configuration by selecting **Default Router Settings** followed by **Device | Store as Power-up Settings** to save the defaults to the keyer's memory.

Restore Router Settings: used to restore settings from a urs file created by the backup command.

A urs file can be used only with the device for which it was generated (the file contains the unit serial number) on a computer with same port assignments.

WARNING: Restoring a backup replaces all current Router settings including presets, **use it carefully!**

Backup Router Settings: used to create backup urs file.

This file contains Router settings (including Presets) for all devices defined in Router.

Options | General

- **Load Router on Start-up:** when checked, Router will start automatically each time the computer is started or rebooted.
- **Start Router Minimized:** when checked, Router will started minimized

Options | Band Map: - Does not apply to DigiKeyer -

Customizable band edge boundaries used to drive the band data output. BCD codes can be customized for driving antenna switches or bandpass filter control.

Options | Digital Band Map: - Does not apply to DigiKeyer -

Customizable band boundaries for the digital mode operation. These settings are used for the (optional) automatic selection of audio switching and PTT mode based on operating frequency. Careful selection of the "Digital band" is necessary for transceivers which do not have a special mode for AFSK operation or do not report the mode in the computer command set. This primarily effects Kenwood and TenTec transceivers although it applies to some older Icom and Yaesu radios.

Options | Audio Devices:

- **Don't use audio devices:** when checked, Router does not use audio devices and the settings on the Audio Mixer and DVK tabs have no effect.
- **Manually assign audio devices:** when checked, Router will allow the user to select audio devices (sound card) in the appropriate fields at Audio Mixer tab and will actively control the audio devices
- **Automatically assign microHAM audio devices:** when checked, Router will automatically assign proper audio device of the same name if multiple microHAM interfaces of the same kind are connected to the one computer.

Options | DVK: - DVK not supported by DigiKeyer -

- **Voice message time limit:** maximum time for each voice message up to 120 seconds.
- **Sample rate:** sampling frequency used during recording and playback of voice messages.
- **Sample size:** sampling size used during recording of voice messages. Sampling size primarily effects audio quality of the messages. 16bit samples provide higher quality than 8bit.

Options | USB:

- **Noise immunity:** selects how many times an undelivered USB packet will be repeated before the USB device is disconnected from the operating system.
- **Response time:** selects how long the USB chip in a device will wait for additional data before sending data to the operating system.

Minimize: Clicking this will minimize Router to the system tray at the bottom right corner of the Windows Taskbar (the "System Notification Area").



TIP: When Router is minimized you can restore it by double-clicking on the Router tray icon. You can also restore Router by double-clicking on the Router icon on the desktop or restarting Router from the Programs menu.

Exit: Clicking on this item will terminate Router.

NOTE: when Router is terminated, application software will be unable to communicate with DigiKeyer and the radio.

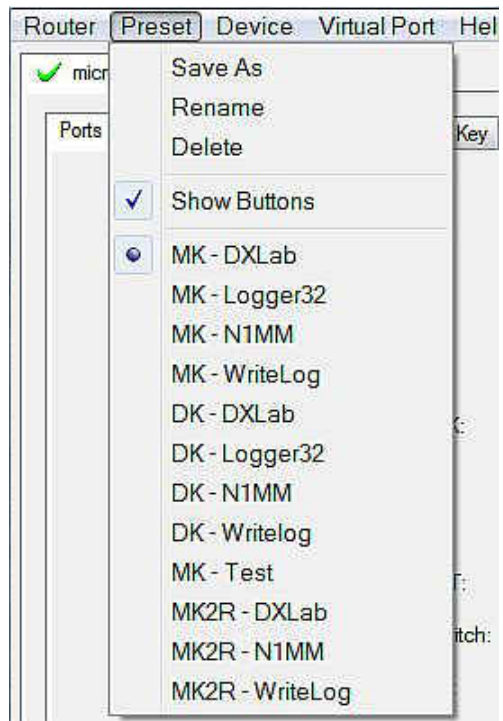
PRESET MENU

The requirements of each program are different and each one may handle radio control, CW and PTT in its own way. In some cases what works for one application may not work properly with another. To get maximum performance from CW Keyer, you may wish to customize the settings for each application.

For easy switching among applications, Router supports up to 12 user definable **Presets**. Different configurations can be stored in these presets and recalled almost instantly simply by clicking on the preset button.

Each preset contains the settings for all devices connected to, and controlled by, Router. For example, if Router controls a *microKEYER*, a DigiKEYER and a USB Interface, each preset remembers the settings for all devices including the assignment of COM ports and the contents of all sub-tabs except the FSK/CW Messages and DVK tabs.

NOTE: Presets for various loggers are not available until they have been saved by the user using Preset | Save as. For setup instructions for various loggers refer to Setup Guide documents available in Router Help menu (Use Help | Download Documents first if Help | Setup Guides are not available or incomplete).



There are three ways to apply a preset once it is created:

1. Click on **Preset** and select the desired preset from the pull-down menu.
2. Click on a preset button. To have buttons visible in Router, **Preset | Show Buttons** must be checked. When the settings from a preset are applied, a green light located in the preset button is lit. This green light is on **ONLY** when all settings in Router are same as those stored in the preset.



3. By right clicking on the system tray icon when the Router is minimized.

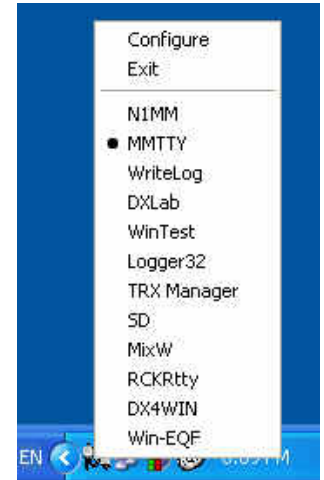
The presets and the current router configuration are stored to the registry when Router is closed and recalled when Router is loaded.

Save as - Saves the current Router settings to a preset for future use.

Rename - Allows renaming of an existing preset.

Delete - Delete chosen preset.

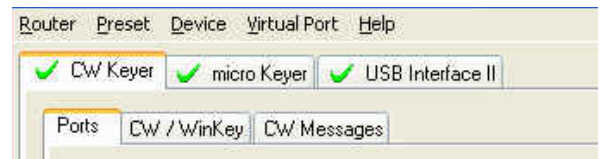
Show buttons - When checked, Router shows the preset buttons.



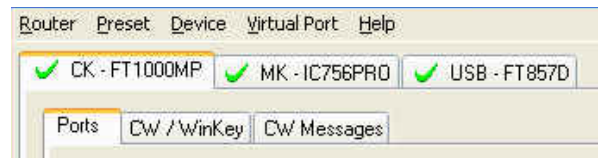
DEVICE MENU

Router can control several devices. This allows configuring the settings for all connected devices at one time by using the Presets.

Each device has its own tab (page) in the main Router notebook. The content of a device tab depends on device type. Adding a device is automatic the first time Router detects a supported device (USB driver). Once detected, a device remains in Router even though device is disconnected. Each device is identified by product identification number and a unique serial string.



Rename – Creates a custom device name. This is useful if two or more devices are connected to the Router. For example CW KEYER, micro Keyer and USB Interface II can be renamed to more identifiable names as shown here..



Delete - Removes a device from the Router. Only disconnected devices with a **RED "X"** on device tab can be removed. To disconnect a device from Router, unplug the USB cable from the computer or device.

Save Template - will save the current Router settings to template file.

When clicked, Router will open a standard File Save dialog window – the default location is *C:\Documents and Settings\All Users\Application Data\microHAM\cfg*. If a hypertext (*html*) or plain text (*txt*) documentation file of the same name as the template is present in the same directory, it will be associated with the template.

Load Template – will automatically configure Router from a template (**.tpl* file).

When clicked, Router will open a standard File dialog – the default location is: *C:\Documents and Settings\All Users\Application Data\microHAM\cfg* - and the desired template can be chosen. When Router loads a template, it looks for an *html* or *txt* file with the same name as the template in the same directory. If such file is found, it is displayed.



TIP: Templates are a powerful tool for quickly configuring Router to work with a particular application. Template files are interchangeable between computers and are well suited for cloning setups when using the same application in multi-computer stations or for sharing custom setups between users.

Upload Firmware: *microHAM* will occasionally release updates to the firmware in DigiKeyer. The update may support new features in Router or improve application compatibility. The recent public version of the firmware is always available from www.microHAM.com/downloads.html.

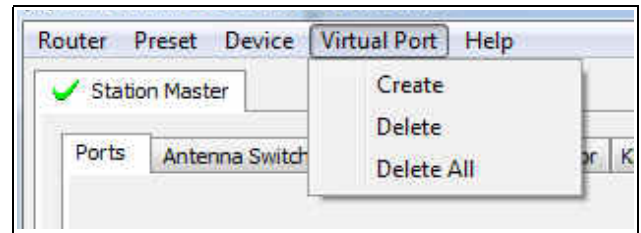
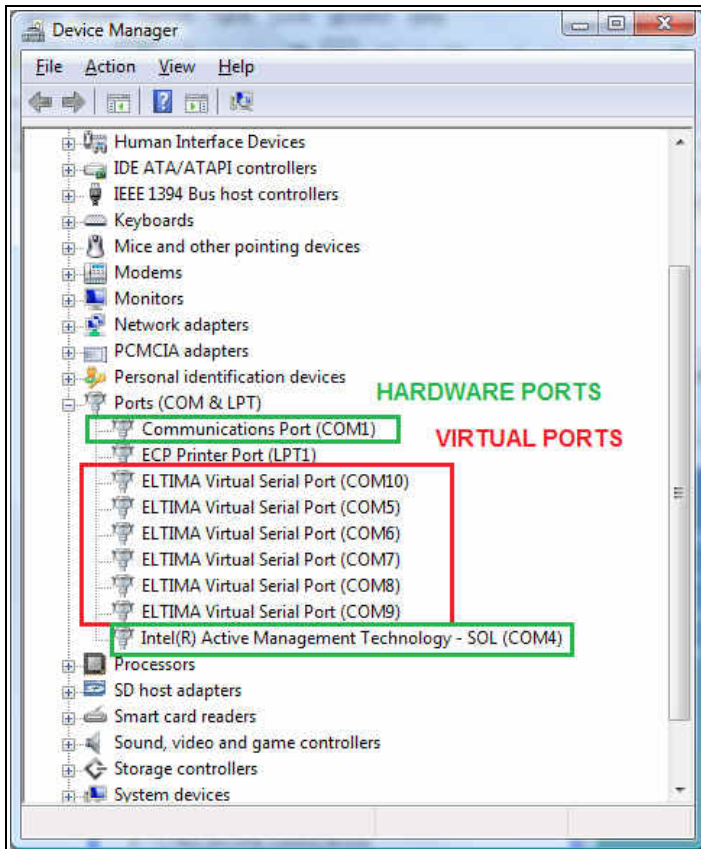
To update firmware, download the firmware file to your computer, then click on **Device | Upload Firmware**. A Windows file dialog will open; navigate to the directory into which you downloaded the firmware file and select the file.



TIP: When you upgrade Router, the upgrade will include the latest firmware file. The new firmware will be automatically uploaded to DigiKeyer when the new version of Router connects for the first time, you have just to allow the upgrade when prompted.

VIRTUAL PORT MENU

It is necessary to create several virtual serial ports (COM ports) in order for a Windows application (logging, control or digital mode program) to access *microHAM* devices.



Create - Creates virtual COM ports. It is possible to select several ports at one time by holding the *Ctrl* key on the keyboard and clicking on COM port numbers. Creating a virtual port may take a while, be patient.

Delete - Deletes any single virtual port.

Delete All - Deletes all previously created virtual ports and resets Virtual Serial Port bus.

Do not delete a virtual port unless all applications using that port have been closed.

Virtual Serial Ports can be reviewed in Device Manager, under the ELTIMA folder.

NOTE: Properly working ports should not display an exclamation mark (!).

HELP MENU

Manuals: Link to microHAM manuals located on your system.

Setup Guides: Link to software configuration guides for many common applications.

Cable Schematics: Link to cable diagrams.

Download Documents: Downloads microHAM documentation including updated manuals and setup guides. You may specify the products for which you want documentation.

NOTE: Requires an Internet connection.

microHAM Home Page: Link to www.microHAM.com

microHAM Downloads Page: Link to www.microham.com/contents/en-us/d29.html

Show Tooltips: When checked, small, single line help is displayed below the mouse cursor.

Update Router: Download and install the most recent version of Router.

About: Shows the Router's internal version number

Change logs: Shows the Router and firmware changes.

DEVICE CONFIGURATION TABS

There are three (3) tabs for configuring DIGI KEYER. Each tab controls a part of DIGI KEYER's functions. Any change to the first two (2) tabs are applied immediately to DIGI KEYER. Changes in Messages are NOT applied automatically. To store them use buttons **Store** or **Store All**.

Ports - used to assign virtual ports to the DIGI KEYER for use by applications.

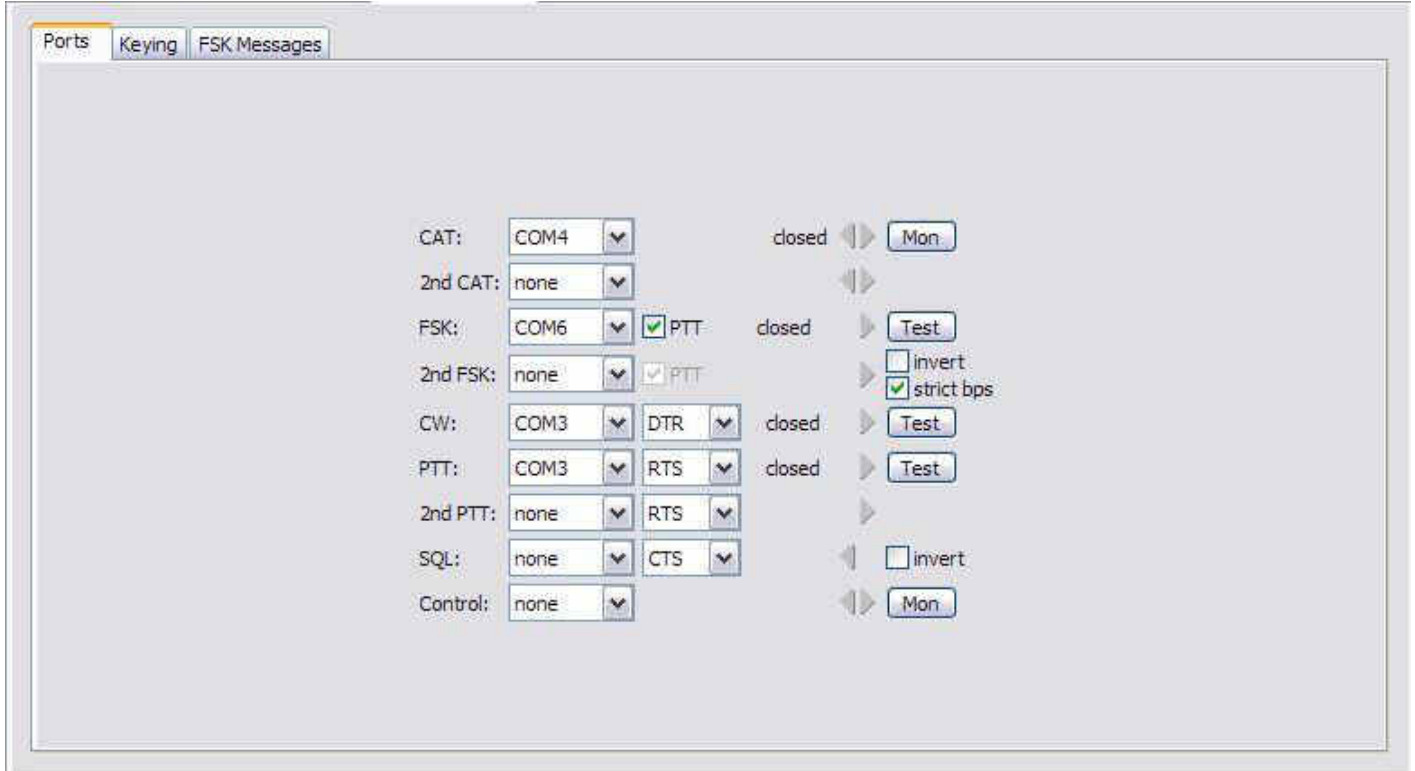
Keying - used to configure timing of the PTT signal, operation of the FSK keyboard and the audio processor.

Messages – used to store FSK messages.



Ports Tab

Once the virtual ports have been created they must be associated with a specific device channel (e.g., Control, CW, PTT, etc.). These assignments should correspond to settings of the application software and must be configured first in Router then in the application (e.g., logging program, MMTTY, STREAM, etc.).



Proper configuration of the port assignments in this tab is critical for integration with loggers. Read the following information carefully.

DigiKeyer has nine functions with indication of the state and settings applied by the host application

- **CAT** (uses RxD and TxD)
- **2nd CAT** (virtual “fork” for the main CAT channel)
- **FSK** (uses TxD and optionally RTS/DTR for PTT)
- **2nd FSK** (uses TxD and optionally RTS/DTR for PTT)
- **CW** (uses DTR or RTS)
- **PTT** (uses DTR or RTS)
- **2nd PTT** (uses DTR or RTS)
- **Squelch** (uses CTS, DCD, DSR or RING)
- **Control** (uses RxD and TxD)

General note: Do not assign virtual ports to those functions which are not used by the application. It is unnecessary and only consumes resources.

CAT PORT & 2nd CAT PORT

The CAT channel is used by application software to control transceiver frequency, mode, T/R switching and many other parameters using a serial (CAT) protocol. Most modern radios implement some form of CAT but almost every radio implementation is different. The functions controlled by the computer depend on the particular application and radio.

NOTE: The port number assigned in Router **MUST** match the port number assigned in the host application. First configure the virtual COM ports in Router then configure the application.

When a COM port is assigned in the Router but not in the application (or the application is not running) Router will indicate the channel is **closed**.



When an application opens the COM port assigned for control (usually at start-up), Router shows the channel as **open** and displays baud rate, data bits, parity and number of stop bits used by the application. For example, 4800 8N2 means: 4800 baud, 8 bits data length, parity = none, and two stop bits.

Data flowing through the CAT channel is indicated by two arrows. A green arrow indicates data flow from the application to the radio and a red arrow indicates data flow from the radio to the application.



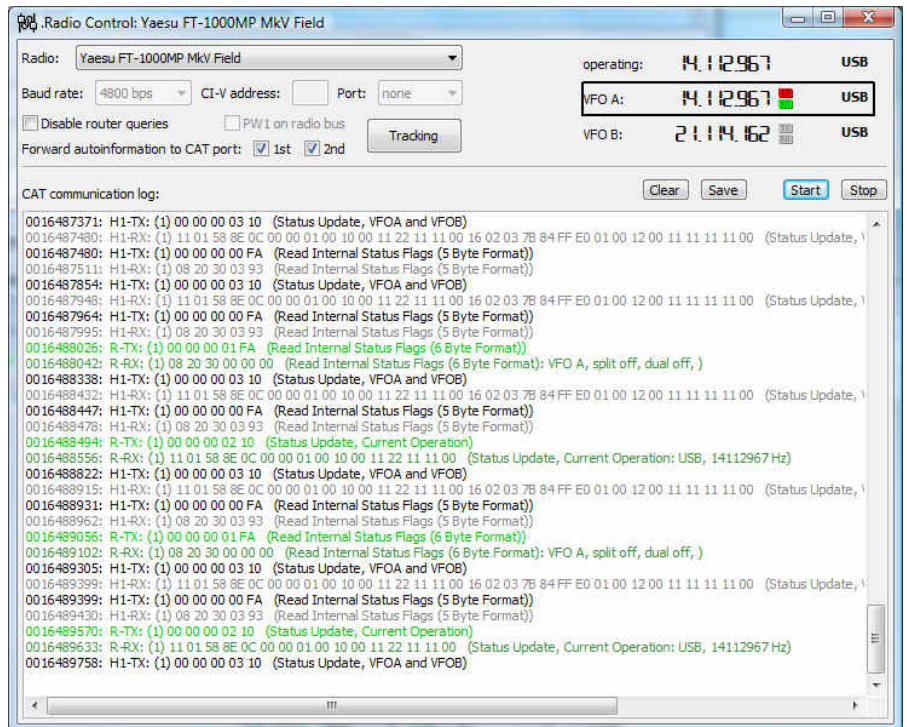
TIP: If the application provides for PTT (T/R) keying by radio control (CAT) turn this function OFF. PTT by CAT is not reliable because RFI can prevent the radio from switching back to receive. There is a dedicated T/R switching channel for this purpose called PTT.

NOTE: If your radio does not support handshake (most do not). Configure DTR and RTS settings in your application program (logger) for Always On or Always Off. Do not select "Handshake."

For Router to determine the operating frequency and mode, it must know what radio (CAT protocol) being used. To select the radio, click the **Set** button, choose your radio in the **Radio** combo box, select communication speed in the **Baud rate** box, and set the CI-V address for Icom and some TenTec radios.



TIP: Disable the Autobaud function in any Icom Radio used with Router. Configure the radio, Router, and your application software to operate at 9600 or 19200 baud.



Disable router queries – When this box checked, Router will not poll the radio for frequency and mode when that information is not available from the communication between the application and radio.

NOTE: "Disable router queries" disables Router polling only when the port has been opened by an application program. When the virtual port is closed, Router always polls the radio to support the automatic switching functions of *DigiKEYER*. If it is necessary to disable all polling, select one of the "none" options in the Radio box.

WARNING: DO NOT select "Disable Router queries" unless you have a specific reason to do so. Router only polls for information that is not requested by the logger and does not interfere with logger polling. Disabling Router queries may result in incorrect frequency and/or mode decoding and can have a serious impact on overall operation.

PW1 on radio bus – When this box checked, Router periodically generates an Icom "Transceive" broadcast to keep the PW1 synchronized.

NOTE: [Check this box if you have an IC-PW1 or other Icom compatible accessory physically connected \(in parallel with the transceiver\). Do not check this box if the only connection is to the transceiver and the PW1 or other other accessory is connected to the accessory CI-V PA port \(described later\).](#)

Tracking:

Tracking: This function allows an external receiver to track the transceiver attached to DigiKeyer.

NOTE: [For specific information, please refer to Appendix C..](#)

The bottom two-thirds of the **Radio** window is a serial communication monitor. The monitor uses colors and tags to indicate which device is responsible for the data. Black queries (H1-TX or H2-TX) and grey radio responses (H1-RX or H2-TX) are from the "host" application (e.g., logger), H1 indicates the host application on the main CAT port, H2 is the host application on the 2nd CAT port. Green packets (R-TX and R-RX) are polls/responses from/to Router and not routed to the application.

Router monitors the communication when the host application performs control and polls the radio periodically for any missing information (VFO frequencies and mode). Because some applications do not poll the radio regularly or completely, Router must break this communication to update its internal state. In order to avoid confusing the application when Router polls the radio, data from the application is buffered and sent to the radio after Router receives a response to its query. If Router does not receive response to a poll within the time allowed or does not understand the response, it displays "oldest query discarded" but forwards all data to the virtual serial port to avoid confusing the application (logger).

Since USB transmits data in frames with a delay between frames, Router indicates frame boundaries with three dots (...). When a packet ends with three dots it means that the data continues in the next frame.

2nd CAT PORT

Beginning with version 7.0, Router provides unique control capability: the 2nd CAT Port is an intelligent data fork (software 'Y' connector) that allows a second application to share control of the radio. Router monitors when data is sent from each application and routes the radio's responses to the correct virtual port.

IMPORTANT: Both applications must use same communication parameters (baud rate, data length, parity and number of stopbits) for proper operation!

Neither CAT port has priority. Polls/commands from the application are processed alternately. In order to avoid collisions and confusion due to unexpected data, responses from the radio are returned only to the application that generated the command. Unsolicited data such as automatic frequency/mode updates (Icom "transceive" packets or "Auto-information" data from Kenwood, Elecraft and recent Yaesu transceivers) is forwarded to both CAT ports.

Due to physical limitation of data channel throughput and the controller capabilities in various transceivers, there are several important rules which must be observed.

- Combined data from both applications must not exceed maximum throughput of the radio control port and transceiver controller. In other words, the polling rate from one application may need to be decreased to provide data space for the second application and vice versa.
- Applications must be tolerant of delayed responses from the radio. Each application must wait for the radio to respond when the another application is communicating with the radio.
- Due to protocol deficiencies in handling VFO split commands with many transceivers (particularly Icom), split mode must be initiated and ended by only one application and manual split control (from the front panel of the radio) should not be used.

NOTE: Despite extensive testing using various combinations of applications for the CAT and 2nd CAT ports, *microHAM* cannot guarantee proper operation with every potential combination of applications.

FSK & 2nd FSK PORTS

The FSK channel is used by the application program to send the FSK keying signal. FSK is used primarily for RTTY. It is very important to understand the difference between FSK and AFSK.

FSK is a digital (On/Off) signal from the computer serial port (or an external modem). This signal is used in the transceiver to generate a frequency shift. FSK must be supported by the transceiver (this mode is commonly labeled RTTY or FSK).

AFSK is an analog (audio) signal generated by the computer sound card (or external modem) used in the transceiver modulation circuits for operating digital modes as RTTY, PSK31, AMTOR etc. Computer sound card generated AFSK or PSK does not require special transceiver support and can be used in the LSB, USB or FM mode of the transceiver. Some radios have dedicated modes for AFSK (generally labeled PKT or DATA) with special features.

It is very important to properly adjust the audio drive level of an AFSK system so as to not overdrive the first transmit audio amplifier stage in the transceiver and produce a wide, distorted signal, full of intermodulation products. It is important to appreciate that distortion generated at this point due to overdrive CANNOT be reduced or eliminated by the reduction of the microphone gain control – it is the signal level that must be adjusted to be about the same as would be expected from a microphone. The microphone gain control then becomes a form of transmit power control.

An initial indication of proper audio drive level can be seen on the ALC meter of the radio. Provided that there is NO audio processing in circuit and that the microphone gain control is in its normal operating position, then, if the ALC does not show or just starts to indicate during transmission, the signal is likely to be clean. It is also important to turn off the microphone compressor, ANY transmit audio equalizer, AND transmit DSP when AFSK is used. DO NOT use any form of digital modulation (sometimes called "Transmit DSP") with AFSK or PSK. Some transceivers bypass these circuits automatically when signal is routed to the rear audio jack instead of the microphone jack, but some do not (for example, the TS-850).

Edited by Geoff Anderson, G3NPA

If your transceiver supports FSK, use FSK for RTTY whenever possible. It's the only sure way to get a clean RTTY signal no matter the microphone gain or compressor (processor) settings on your radio.

When a COM port is assigned in Router but not in the application program (or the application is not running), Router will indicate the channel is **closed**.

When an application opens the COM port, Router will indicate the channel is **open** and display baud rate, number of data bits, parity and number of stop bits in use. For example, 45 5N1.5 means: 45 Baud, 5 data bits, no parity, 1.5 stop bits.

| | | | | |
|----------|------|---|----------|--|
| FSK: | COM6 | <input checked="" type="checkbox"/> PTT | 45 5N1.5 | <input type="button" value="Test"/> |
| 2nd FSK: | COM7 | <input checked="" type="checkbox"/> PTT | closed | <input type="checkbox"/> invert <input type="checkbox"/> strict bps |

The second FSK port is useful when operating split with radios that have two receivers (e.g., FT-1000, FT-2000, FT-9000, K3, Orion or IC-7800). The second instance of the RTTY program should specify "right channel" for its audio source and should be configured to use the 2nd FSK port for its FSK output.

Radios without a second receiver can use the 2nd FSK port for a second RTTY program with a different decoding algorithm to provide diversity decoding and transmit from either program.



TIP: If you see a baud rate other than 45.5 baud (e.g., 4800 or 9600), the application is NOT configured correctly for FSK RTTY operation.

PTT: The virtual port used for FSK can also support PTT (required by MMTTY). When you use MMTTY, select the PTT box and RTS will be used for PTT. Do not use the FSK port for any other function.

Invert: Some transceivers lack the ability to set the sense of the FSK input. If you cannot set the proper sense, check the invert box. This is normally necessary only with the TenTec Omni V, Omni VI and Kenwood TS-940.

Strict bps: Some programs rely on the the FSK port for proper PTT timing; they drop PTT (unkey) when the FSK port buffer is empty. With virtual ports, this may cause PTT to drop before the contents of a message (macro) are complete. 'Strict bps' disables the virtual port buffering and transmits one character at a time to the output. Due to the additional overhead, FSK output will be slightly slower but operation will be more reliable.

To test FSK operation from the computer to the radio, click on **Test** button with no port assigned or the port closed. The Test button will generate "RY" two times.

CW PORT

By its very nature, USB is not well suited to transfer the real time events required for CW keying. In addition to the latency inherent in the USB protocol, delays due to CPU load, internal Windows message processing (inter-process communication) and data flow from another peripherals sharing same the USB root hub can result in transmitted characters that are garbled. To minimize these unwanted operating system effects Router uses a specially developed oversampling and prediction algorithm to assure the smoothest possible transfer of control signal events over USB. Using these techniques, CW keying in the Router is, in most cases, usable up to 50 WPM if the application generates keying signals accurately and does not consume 100% of CPU time at the highest priority class.

Router allows assigning a virtual serial port for software CW using DTR or RTS signals. The DTR* and RTS* are identical to DTR/RTS except that the output is inhibited for one second after the COM port is opened. RTS*/DTR* should only be used with programs that cause unwanted key-ups during startup.



TIP: More applications use DTR for CW than RTS.

When an application opens the COM port (usually at start-up), Router will indicate the channel is **open**.

The state of the CW channel is indicated by a red arrow. If port is opened, it does not mean that it is properly configured. The red arrow will light in time with the transmitted CW when the port is properly configured.



To test CW operation, click on the **Test** button with no port assigned or the port closed.

PTT & 2nd PTT PORTS

The PTT channel is used for T/R switching of the transceiver, Power Amplifier and Low Noise Preamplifier (LNA). An internal T/R sequencer assures 100% protection against transmitting through the LNA or hot switching of the PA when the PTT channel is used for T/R switching. More information about T/R switching, DIGI KEYSER PTT outputs and the sequencer is provided under the Keying Tab (page 21).

Router allows assigning virtual serial ports for PTT using the DTR or RTS signals. DTR* and RTS* are identical to DTR/RTS except that the output is inhibited for one second after the COM port is opened and . should only be used with programs that cause unwanted key-ups during startup.



TIP: More applications use RTS for PTT than DTR.

The state of the PTT channel is indicated by a green arrow. If the port is opened, it does not mean it is properly configured. When the port is properly configured, the arrow will light during the entire transmission. To test PTT operation, click on the **Test** button with no port assigned or the port closed.

The 2nd PTT channel is identical to the primary PTT channel. 2nd PTT provides a way for a second application to key the radio if the primary application also controls PTT – for example, a logging program and CW reader/keyboard.



TIP: Always use serial PTT instead of the radio command PTT or VOX. It is the only way to assure proper sequencing of a Power Amplifier, LNA, or receive antenna switch.

To test PTT, click on the **Test** button with no port assigned or the port closed.

SQUELCH PORT

Even though most applications do not monitor the squelch and do not have the ability to perform specific functions based on its status, we have decided to include this feature in Router. Perhaps someday applications will be able to detect the squelch and use this information for automated functions like audio recording.

Router allows assigning a virtual serial port to squelch as CTS, DSR, DCD or RING.

When a COM port is assigned to the squelch channel in Router but not in the application (or no application is running), Router shows the channel as **closed**.

When an application opens the COM port (usually at start-up), Router shows channel as **open**.

When squelch is active, this state is indicated by a red arrow.

CONTROL PORT

The Control Port allows an application program (logger) that implements the microHAM Control (SO2R) Protocol to use the stored CW messages. This port should normally be set to "none."

The **Mon** button opens a logging window that permits capture of Protocol data between the application and Router for later analysis. The Control monitor operates the same way as the CAT port monitor. The buffer captures the last approximately 20K of data. Do not enable logging unless necessary for debugging purposes as it imposes a minor performance penalty.

KEYING TAB

The Keying tab includes controls for the USB Audio processor, PTT and FSK Keyboard.

PTT – T/R KEYING

DigiKeyer has three (3) PTT outputs: PTT, PA PTT and LNA PTT. PTT is brought out to the DB15 Radio connector. PA PTT and LNA PTT are available on RCA connectors at the DigiKeyer rear panel.

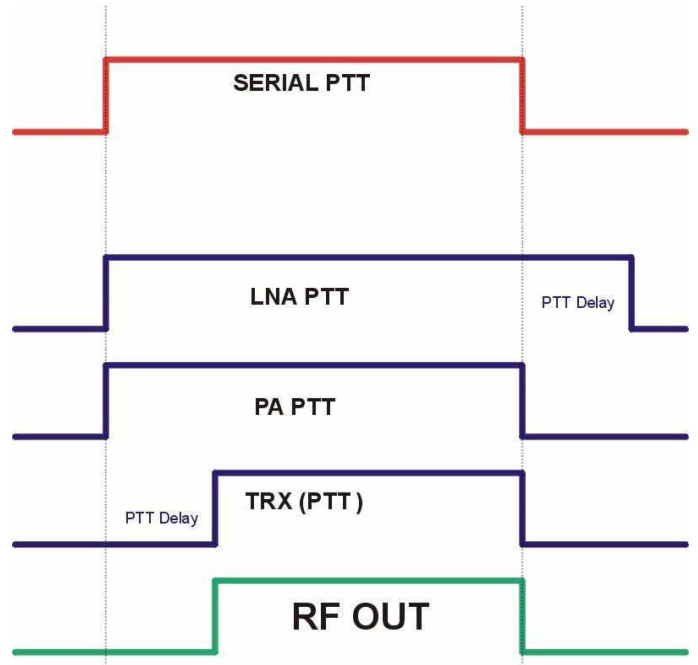
PTT is normally wired to the radio Accessory jack and is used to switch the radio into transmit.

PA PTT is present at the DIGI KEYER rear panel RCA jack and is designed for switching a power amplifier. PA PTT is enabled by checking the **PA PTT** box.

PA PTT will close before transceiver PTT by the amount of selected PTT Delay and will open at the same time as the transceiver PTT.

LNA PTT is present at the DIGI KEYER rear panel RCA jack and is designed for switching (bypassing) a low noise preamplifier (LNA) during transmit. LNA PTT is enabled by checking the **LNA PTT** box.

LNA PTT will close before the transceiver PTT by the amount of selected PTT Delay and will open after the transceiver by the same amount.



Serial port PTT

PTT delay ms

PA PTT LNA PTT

Serial port PTT: selects whether PTT is enabled.

PTT delay: amount of delay between activation of PA PTT and LNA PTT and the activation of the radio PTT. 0 to 2500 milli-seconds.

PA PTT: Enable PA PTT output

LNA PTT: Enable LNA PTT output

FSK from Keyboard

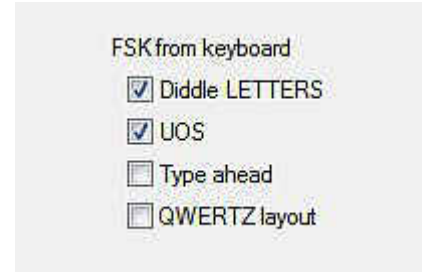
If an external PS/2 keyboard is attached to the DigiKeyer, Router supports additional settings for FSK.

Diddle LETTERS will generate the "LETTERS" character if nothing is being typed

UOS automatically generates the "Unshift on Space" function when checked

Type ahead enables a type ahead buffer for the keyboard.

QWERTZ layout configures DigiKeyer for the alternate keyboard layout



FSK MESSAGES TAB

DIGI KEYER allows defining nine messages of up to 50 characters each which are stored in non-volatile memory. Each memory may repeat with a programmable delay (loop) or call another memory (chain).

| Message content | Jump to | Delay [s] | |
|----------------------------|---------|-----------|-------|
| 1 W4TV | - | 0 | Store |
| 2 DE W4TV | - | 0 | Store |
| 3 [CR]TU 599 | - | 0 | Store |
| 4 [CR]CQ TEST DE W4TV W4TV | - | 0 | Store |
| 5 559 | - | 0 | Store |
| 6 599 | - | 0 | Store |
| 7 [CR]CQ CQ DE W4TV W4TV | - | 0 | Store |
| 8 | - | 0 | Store |
| 9 | - | 0 | Store |

Commands which may be included in a memory are:

CR & LF: Insert Carriage Return/Line Feed

Jump to: used for looping a message or calling another message

Delay: sets the delay in seconds before looping or calling another message

Store: saves one message to DIGI KEYER memory

Store All: saves all messages to DIGI KEYER memory

Load from File: loads all messages from file

Save to File: saves all messages to file

Messages can also be saved and replayed also using an external keyboard attached to the **Remote** jack.

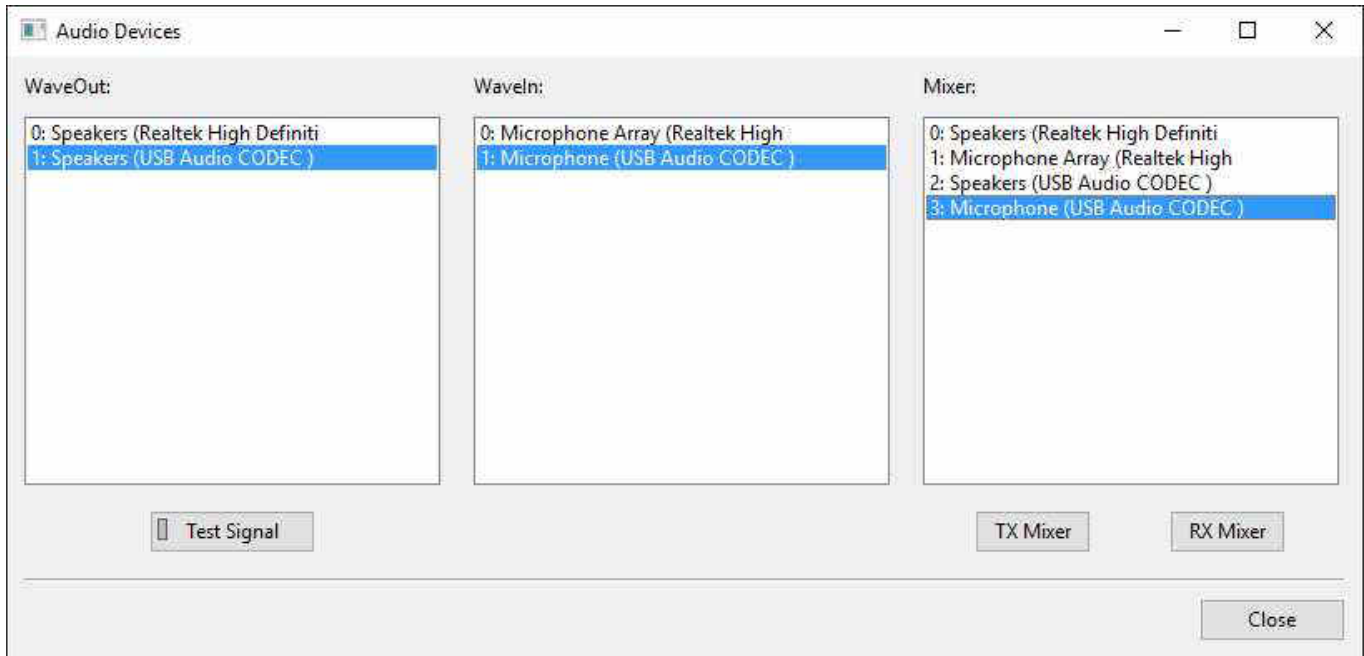
6 - SETTING AUDIO LEVELS

There are three pots on DIGI KEYER for adjusting audio levels.

The TX Pot adjusts the level of audio to the transmitter. The RX MAIN Pot provides adjustment of the audio from the radio (main receiver) to the sound card (computer) left channel. The RX SUB Pot provides adjustment of the audio from the radio (sub-receiver) or a second receiver to the sound card (computer) right channel.

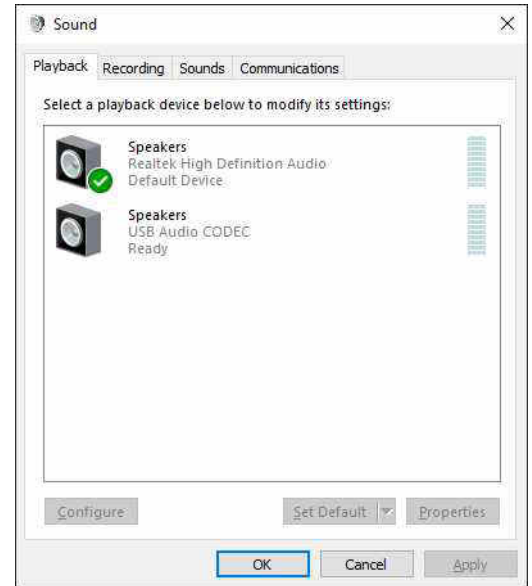
IMPORTANT: Many transceivers, including all Yaesu transceivers, **MUST** be switched to a special digital mode (DIG, PKT, DATA, USB-D/LSB-D etc.) to enable the rear panel line input!

1. Set the TX control on Digikeyer to the 12:00 position.
2. On Router's Keying tab, click the "Sound Card" button.
3. On the "Audio Devices" window, select "Speakers (USB Audio CODEC)" in the Mixer and WaveOut boxes.



NOTE: You may need the WaveOut and WaveIn indexes of the sound card to configure some programs. Make note of them or remember where you can find the "Sound Card ID" numbers.

4. Click the TX Mixer button. If the Mixer does not appear, open the Windows Sound Control Panel and select the "Playback" tab.
5. Click the "Test Signal" button on the Audio Devices screen and verify that the VU Meter for connected sound card reaches maximum. If not, turn off Test Signal, restart Router and return to step 1. Turn off the Test Signal.
6. Select the "Playback" tab in the Sound Control Panel
 - double click "Speakers (USB Audio CODEC)"
 - click Levels tab and unmute Speakers
 - right click on the speakers slider and select "decibels"
 - set the level to - 6.0 dB
 - click Balance and set LEFT (1) to -6.0 dB and RIGHT (2) to -6.0 dB.

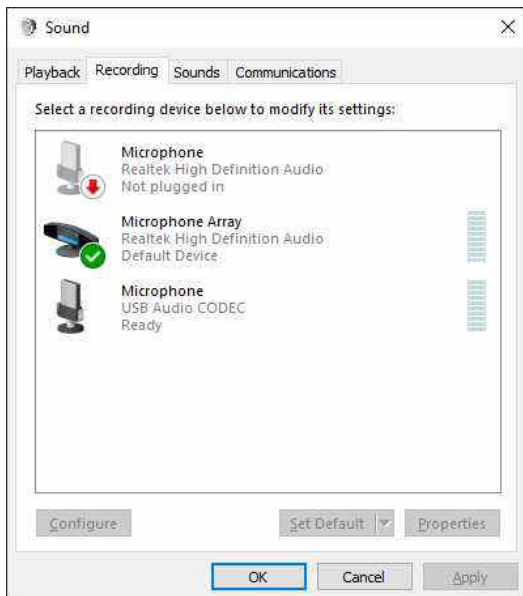


7. Switch your transceiver to AFSK mode (PKT, DIG or DATA for Yaesu, LSB-D or USB-D for current Icom transceivers, RTTY or RTTY-R on K2 and USB or LSB for Kenwood, TenTec and older Icom transceivers). Do not select RTTY or FSK; they do not use the audio input.

IMPORTANT: Many transceivers, including all Yaesu transceivers, MUST be switched to special digital mode (DIG, PKT, DATA, USB-D/LSB-D etc.) to enable the rear panel line input!

8. Click the "Test Signal" button and adjust the Speakers level for normal (rated) output on your transceiver while keeping the ALC meter as low as possible. Turn off the Test Signal.

NOTE: For the Elecraft K3 and other transceivers that have a separate "line In" control, do not adjust the SPEAKERS slider. Instead, adjust the transceiver Line In level (mic gain) until the ALC shows the correct level.



9. Select the "Recording" tab in the Sound Control Panel
 - double click on "Microphone (USB Audio CODEC)"
 - click Levels tab and unmute Line
 - set level slider to 0.0 dB and click "OK"
10. Click on the "Advanced" tab and set "Default Format" to: "2 channel, 16 bit, 48000 Hz (DVD Quality)" then click "Apply"
11. Adjust receive audio levels for your applications using the Rx Main and RX Sub controls.

7 - EXTERNAL KEYBOARD

DigiKeyer allows generating FSK signals from a PS2 keyboard attached to the **Remote** jack.

NOTE: The keyboard must be PS/2. A USB keyboard with PS/2 adapter will not function properly.

| <i>Number Pad Key</i> | <i>Standard Key</i> | <i>Function</i> |
|-----------------------|------------------------------|---|
| NUM LOCK | | Start/Stop recording of message - (record mode is indicated by NUM LED, if present) |
| NUM 0 | ESC | Playback: Stop transmitting (clear message/buffer) |
| | | Recording: abort recording without saving the message |
| NUM 1 – NUM 9 | F1 – F9 | Playback: Play message |
| | | Recording: Select message slot to record |
| NUM DEL | | Loop last message – default is one second. Following NUM DEL with a number on the numeric pad will set the delay |
| | Enter | Transmit CR/LF |
| | F10 | Toggle PTT |
| | CAPS LOCK | Enter FSK mode (CAPS LED is on when in FSK mode) |
| | Space | Transmit a space. If "type ahead" is selected, the character is pushed into the type ahead buffer and transmitted in sequence |
| | 0-9, A-Z !"\$%&'(),-./:;? | Transmit the character. If "type ahead" is selected, the character is pushed into the type ahead buffer and transmitted in sequence |

8 - PACKAGE CONTENTS

The product includes DigiKeyer™, USB cable, and CD-ROM containing the microHAM USB Device Router program and documentation. If the shipment is incomplete, please contact us at the following address:

E-mail: support@microham.com

fax : +421 2 4594 5100

by Post: **microHAM s.r.o.**
Nadrazna 36
90028 Ivanka pri Dunaji
SLOVAKIA

9 - WARRANTY

microHAM warrants this product for three (3) years. The product must not be modified in any way or the warranty is voided. Cables are warranted against defects in materials and workmanship for a period of 60 days.

What is covered: During the warranty, *microHAM*, s.r.o., will repair or replace defective product at their sole discretion. You must send the unit postpaid with a copy of the original invoice to the distributor from whom you purchased the product. *microHAM* will pay return shipping.

What is not covered: This Limited Warranty does not cover (1) correction of installation or software errors in the user's computer(s), (2) damage caused by misuse, negligence, user modifications or failure to follow the user manual, (3) connection to improper or excessive voltage or voltage surges, (4) the incorrect installation of any cables connected to the device by the user or (5) weather related storm, lightning or electrostatic discharge damage.

microHAM USB Device Router (the software) is provided "as is" without guarantee of compatibility with any specific operating system, computer, peripheral or accessory.

microHAM assumes no liability or responsibility for damage to other devices or injuries to persons as a consequence of using our products.

If the terms of the above warranty are not acceptable, return the unit, all associated documents and accessories in the original unopened package, prepaid, to microHAM or to your supplier for refund less shipping and a restocking fee.

10 - SPECIFICATIONS

DigiKeyer is a multi-mode interface between computer and transceiver. It has been optimized for amateur digital modes and includes a high performance USB sound processor.

DigiKeyer is connected to the computer using a single A-B USB cable which is included.

The transceiver and DigiKeyer are connected by single radio cable terminated on one side by a DB15M and on the other side by the appropriate plugs for the specific transceiver. The cable carries power for DigiKeyer, audio, CAT control and keying. The appropriate transceiver interface cable is specified when DigiKeyer is purchased.

If a Windows PC running the "*microHAM* USB Device Router" program is connected, DigiKeyer works as a computer interface and sound card. It transfers all control signals generated by the application program between the computer and transceiver. Software compatibility is provided by using virtual serial ports. Router monitors these virtual ports and transfers any data or commands by USB to the micro controller in DigiKeyer. DigiKeyer processes this data and sends it to the physical ports of transceiver as CAT, CW, and PTT functions.

The USB sound processor in DigiKeyer independently provides analog to digital conversion of audio from the transceiver and transfers it via USB to the computer where the operating system processes that data as a "sound card." The USB sound processor also receives digital audio from any applications running on computer and converts that data into audio signals to modulate the transceiver.

microHAM Device Router is not required in order to enable the USB sound functions. The USB sound processor is supported directly by Windows, Apple OS 10, and LINUX.. It may be used by any application compatible with those operating systems.

11 - System Considerations

DigiKeyer can be used with a wide variety of software. The capabilities of those packages will have large influence on the level of computing power needed to utilize DI.

When used with Windows based contest logging applications like N1MM Logger Plus, Win-Test, and WriteLog or Windows based general logging applications like DXBase, DXLab Suite, DX4Win, Logger 32 and others, the microHAM control and interface application "*microHAM Router*" must run with the application. Since both the logging program and microHAM Router are real-time applications, system performance will be dependent on both CPU speed and the amount of available RAM.

While *microHAM Router* may run on slower computers, the minimum tested system is a 1.8 GHz Core2Duo processor, Windows 7, 1 GB RAM, CD-ROM, and USB 1.1 port. Whether Router can run as designed on slower machines with less memory and leave enough resources for application programs has not been determined. *microHAM Router* is not supported on any 16 bit version of Windows (95, 98, ME, SE).

In order to provide sufficient performance for simultaneous operation of microHAM Router, a logging application, Internet connectivity and other accessory programs, the recommended system is a 2 GHz or faster multi-core CPU with Windows 8.1 or later, 4 GB RAM, CD-ROM, root USB 2.0 port, and a transceiver with supported control protocol and logger, control, or digital mode software.

12- Hardware Specifications

USB: USB 2.0 Full speed , USB 1.1 compatible

Power consumption: USB – less than 100mA; Transceiver – less than 200mA at 13.8V (max. 16V)

Radio Port: Rx/D, Tx/D – max. 57,600 Baud

Levels: Jumpers selectable TTL, inverted TTL, open collector bus, RS232

CW: open collector, max 30V/400mA

FSK: open collector, max 30V/400mA

PTT: open collector, max 30V/400mA

Audio Out: 600 Ohm, 3V p-p max.

3dB bandwidth: 0.2 - 6KHz typical

Second harmonic: -84 dB typical

Third harmonic: -72 dB typical

D/A Sampling rates: 32000, 44100, 48000 Hz.

Audio In: 50K Ohm, max 4Vpp

3dB bandwidth: 0.2 - 6KHz typical

Absolute noise floor: -82 dBm @600 Ohms typical

Dynamic Range: 82 dB typical

A/D sampling rates: 8000, 11025, 16000, 22050, 32000, 44100, 48000 Hz.

Dimensions: **W** 175mm (6 7/8") x **H** 44mm (1 3/4") x **D** 101mm (4")

Weight: 1100g (2.4 lbs.)

DECLARATION OF CONFORMITY



Federal Communications Commission Statement (USA)

This device complies with Part 15 of the FCC Rules. Operation is subject to the following two conditions: (1) this device may not cause harmful interference, and (2) this device must accept any interference received, including interference that may cause undesired operation.



European Union Declaration of Conformity

microHAM, s.r.o. declares that the products:

Product Name: DigiKeyer

Conforms to the following Product Specifications:

EN 55022: 1998 Class B following the provisions of the Electromagnetic Compatibility Directive 89/336/EEC

APPENDIX A – CONNECTORS Radio - DB15

| Pin # | Label | Description |
|-------|-----------------|---|
| 1 | Power +13.5V | 12 - 16V DC input |
| 9 | CAT IN | Control port input |
| 2 | CAT OUT | Control port output |
| 10 | SQL1 | Level squelch input |
| 3 | SQL2 | Impedance squelch input |
| 11 | PTT | PTT output "open collector" |
| 4 | CW | CW output "open collector" |
| 12 | AUX | reserved |
| 5 | FSK | FSK output "open collector" |
| 13 | AUDIO OUT S | Radio AUDIO input signal |
| 6 | AUDIO OUT GND | Radio AUDIO input ground |
| 14 | AUDIO IN MAIN S | Radio AUDIO output signal main receiver |
| 7 | AUDIO IN MAIN G | Radio AUDIO output ground |
| 15 | AUDIO IN SUB S | Radio AUDIO output signal sub receiver |
| 8 | AUDIO IN SUB G | Radio AUDIO output ground |
| SHELL | GND | Radio and power GND |

REM – miniDIN 6

| Pin # | Label | Description |
|-------|------------|--|
| 1 | PS/2 DATA | TTL PS/2 DATA line |
| 2 | n/c | Not connected |
| 3 | GND | Connected to the system ground and case. |
| 4 | +5 V | +5V output, max.100mA. |
| 5 | PS/2 Clock | TTL PS/2 CLOCK line |
| 6 | n/c | Not connected |
| SHELL | GND | Connected to system ground and case |

APPENDIX B – RFI Considerations

A few guidelines to eliminate problems caused by RFI:

1. Proper grounding of all electronic equipment is critical. A modern station contains many, diverse, types of interconnected and interrelated equipment: transceiver, power amplifier, computer, control boxes, switch boxes, and power supplies. Each of these must be individually grounded with a separate connection to a single common ground point, thus forming a star ground connection.

Proper grounding of computers, both "desktop" and laptop is often overlooked. A separate ground connection should be run from the computer to the station common ground point. The best place to ground a computer is a screw with a good connection to the case. On a laptop, this is often the retaining screw on a D-sub connector (e.g, VGA output); on a "desktop" it is often the screws holding the power supply.

It is absolutely important to prevent ground currents from flowing to the common ground point by way of the signal cable. If you use a microHAM "keyer," a good test is to remove the DB15/DB37 connector and USB cable from the keyer and measure the resistance from the shell of the DB15/DB37 to the shell of the USB cable. There should be NO MORE than FIVE (5) Ohms (and preferably less than TWO Ohms) between them.

Note: many PC manufacturers fail to provide an adequate connection between the shell of the USB connector and the PC case. If this is the case, a connection can be established by bridging a folded piece of aluminum foil between the shell of the USB connector and the PC case.

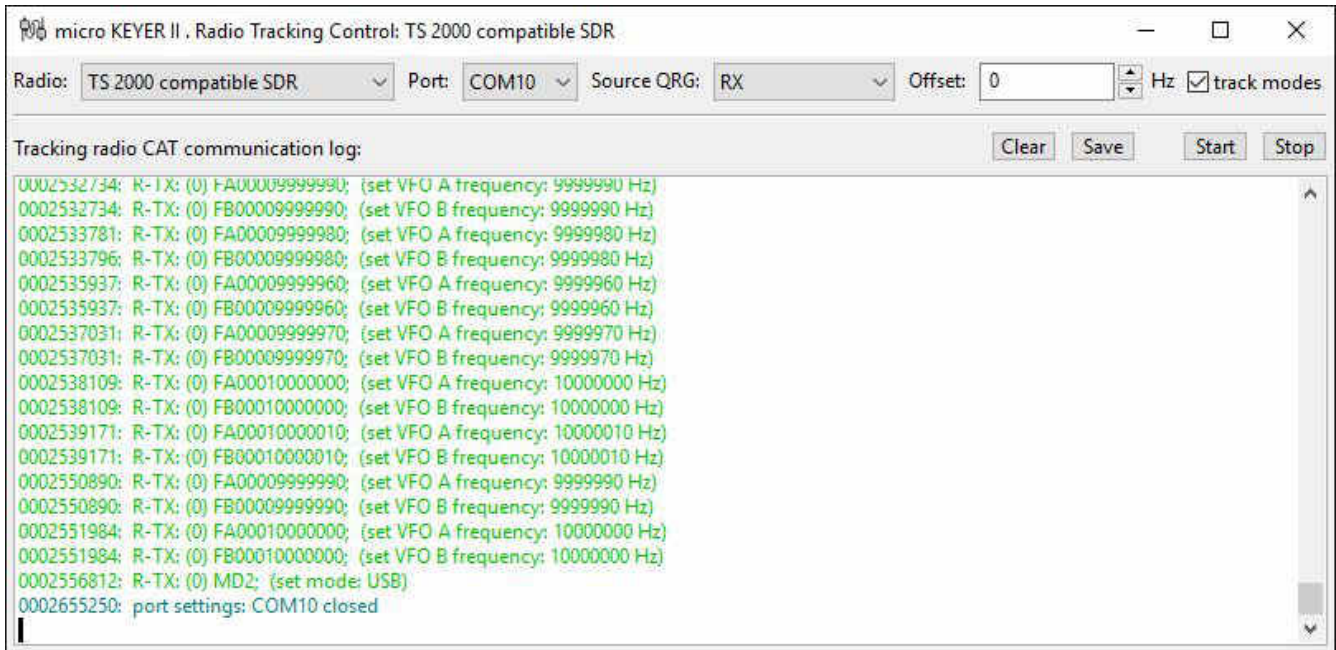
2. Power all your equipment from a single wall outlet. The "safety ground" often exhibits excessive noise between power outlets - sometimes often due to other equipment powered from the same branch circuit. It is always better to avoid this source of noise/interference. It is also a good idea to check the power distribution for loose connections, reversed neutral/ground, open ground and other wiring problems.
3. Sometimes, the USB cable can be a source of RF interference - the cable might have inadequate shielding or the transceivers in PC might be improperly designed causing data flowing inside the cable to be reflected as a common mode current on the shield of the cable. This common mode current can radiate a significant "digital noise." If this is the source of your problems, it can be significantly reduced or eliminated using ferrite chokes on both ends of the cable. Two or three turns through a #31 mix FT240 toroid are better than the common snap-on ferrites of unknown mix.
4. Often, another cause of RFI problems is a common mode current flowing along the antenna feedline into the shack. It is a common misconception that the only thing required of a feedline is that it have low SWR. Unfortunately, a low SWR does not guarantee low common mode current. These common mode currents are conducted into the shack where they can radiate from the feedline, induce currents in any nearby metal object, and/or be conducted into the interconnected equipment. Common mode currents on a feedline are indicated by problems that differ in intensity from one band to another or from one end of the band to another, by problems that change when a feedline is moved or its length changed, where the problem moves from one piece of equipment to another based on band, and/or where the severity changes with transmit power level. The solution is to use common mode chokes to prevent the current from entering the shack. This topic has been given thorough treatment in recent works by W1HIS and K9YC.

W1HIS: <http://www.yccc.org/Articles/W1HIS/CommonModeChokesW1HIS2006Apr06.pdf>

K9YC: <http://www.audiosystemsgroup.com/RFI-Ham.pdf>

APPENDIX C – Tracking

NOTE: Tracking is experimental code for linking the transceiver frequency to a tracking receiver begun in Router 7.5.0 . Bidirectional frequency tracking is not supported.



Radio: Specifies SDR receiver model. Current choices are Perseus and TS-2000 Compatible.

Port: Specifies COM port used to communicate with the SDR. Must be COM 10 for Perseus. The port must be defined as a “virtual serial port for router interface”.

Source QRG: Specifies the frequency for the SDR to track. Where two sources are shown (e.g., VFO A, VFO B) the first source will be sent to the SDR in Receive and the second source in Transmit.

Offset: Frequency offset between the transceiver frequency and the frequency sent to the SDR. This is useful when the transceiver is used as an IF with a transverter. Default is 0Hz, resolution is 1Hz.

Track modes: Send mode as well as frequency to the SDR software.

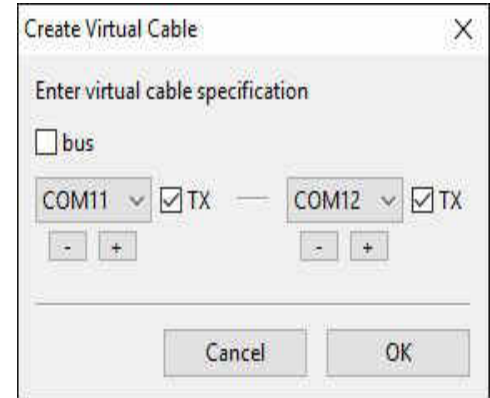
The bottom two-thirds of the window is a serial communication monitor which displays the data sent to the SDR for diagnostic purposes. The log is a circular buffer; the size is set in Router | General.

APPENDIX D – Cables and Bridges

Cables and Bridges are an experimental capability – *microHAM* provides no support or warranty for the Cables and Bridges capability. These features are undocumented but relatively self-explanatory.

Cables (cross wired, aka “null modem” cable) create interconnected virtual ports which can be configured as a bus, point to point pair like com0com, or point to multi-point (star, splitter or combiner) - like VSPE. Applications may connect to each other using cables. For example, the Secondary CAT Serial Port in DXLab Suite's Commander may connect to one end of a cable and a software panadapter might connect to the other end of the cable. There is one exception, cables ***can not*** connect to any port used in Router's Ports tab.

The TX check box designates the port as a bidirectional port – the TxD line is active/connected. If the TX box is unchecked, the port is a “receive only” (listen) port like the “listen” leg of the “Y” cable used between a computer serial port and transceiver for devices like a SteppIR controller, “AT-Auto” tuner or some automatic power amplifiers.



Bridges (straight “extender” cable) allow connecting any two (existing) ports - serial port to serial port, serial port to virtual port (cable), or virtual port (cable) to virtual port (cable) but again Bridges ***can not*** connect to any port used in Router's Ports tab.

The only purpose of cables and bridges is to replace third party software serial splitters or software null modem connections like Com0com, DDutil, LP-Bridge, VSPE, etc. that may conflict with the Eltima VSPAX drivers used by *microHAM* USB Device Router. In this regard, *microHAM* USB Device Router provides a means to enable and configure the capabilities that exist in the Eltima VSPAX product.