

# DigiKeyer and MMTTY setup

## Router setup:

Note: The absolute port numbers do not matter. The key is consistency - the same port number must be used for a specific function every time it is used.

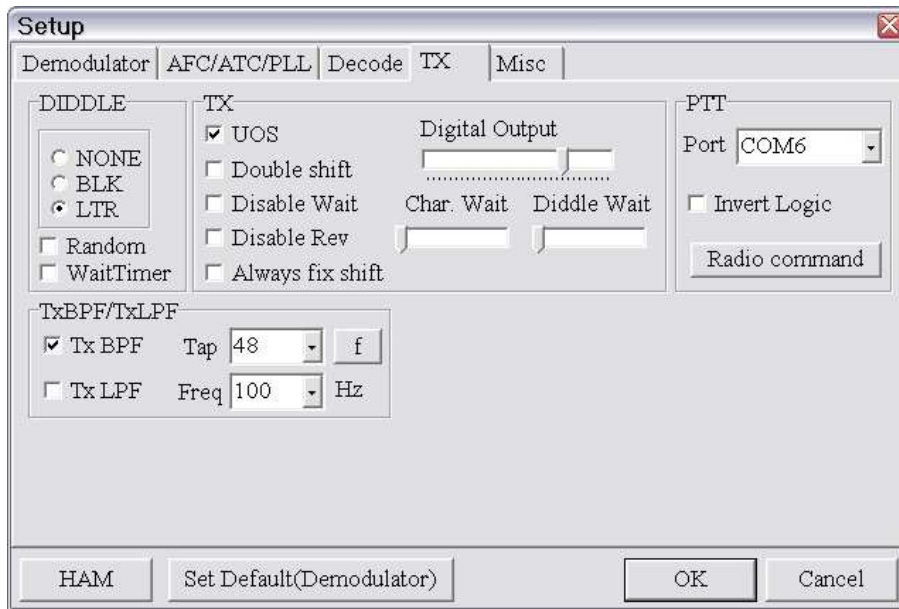
1. Assign the radio control virtual COM port.
2. Assign a port for FSK – check the PTT box.

The screenshot shows the 'Keying' tab in the DigiKeyer software. The 'RADIO' section is active, displaying the following settings:

Parameter	Value	Additional Settings	Action
CAT:	COM4	closed	Set
2nd CAT:	none		
FSK:	COM6	<input checked="" type="checkbox"/> PTT, closed	Test
2nd FSK:	none	<input checked="" type="checkbox"/> PTT	<input type="checkbox"/> invert, <input type="checkbox"/> strict bps
CW:	none	DTR	Test
PTT:	COM4	RTS, closed	Test
2nd PTT:	none	RTS	
SQL:	none	CTS	<input type="checkbox"/> invert
Control:	none		Mon

3. On the **Keying tab** select PTT Delayed and check PA PTT if DigiKeyer will be controlling an amplifier PTT line.
4. Save settings to a preset by selecting menu **Preset | Save as**. Choose a position and name it MMTTY.

## MMTTY setup:



1. Click **Option | Setup MMTTY** and select the **TX tab** ...
2. Set the PTT Port to the port you defined for FSK on Router's Ports tab. This port will be used for PTT and FSK.

3. If you want MMTTY to log your radio operating frequency, click on the **Radio command** button.

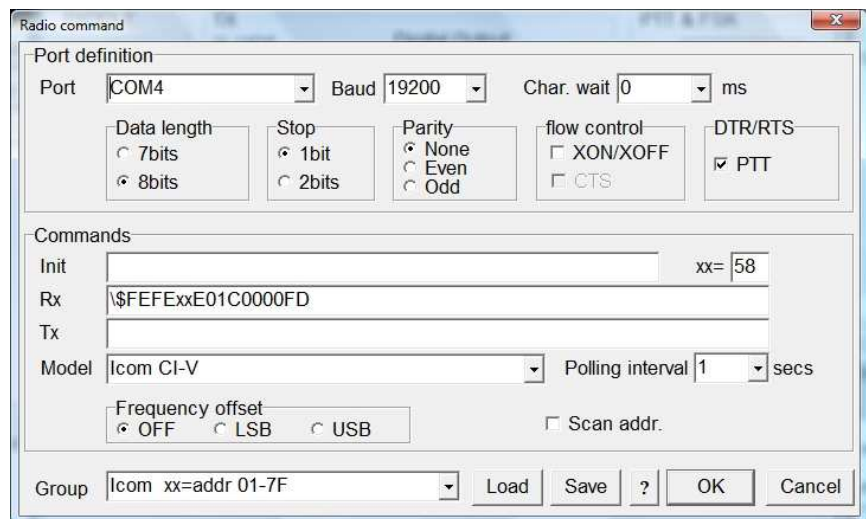
4. Set the port to the same port you chose for Control on Router's Ports tab.

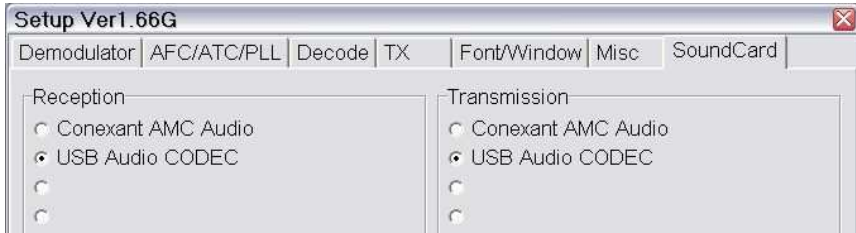
5. Set Baud, data length, Stop and Parity to the values required by your radio.

6. Check the PTT box even if you are using FSK

7. Set the Radio type in the drop down box in the lower left corner. Blank the TX line to keep MMTTY from trying to using software commands to switch the transceiver into transmit mode – "command PTT" is not supported by all transceivers and mixing command PTT with hardware PTT can cause some transceivers to "hang" in transmit.

Note: for Icom radios you will need to set the appropriate address in the XX= box.





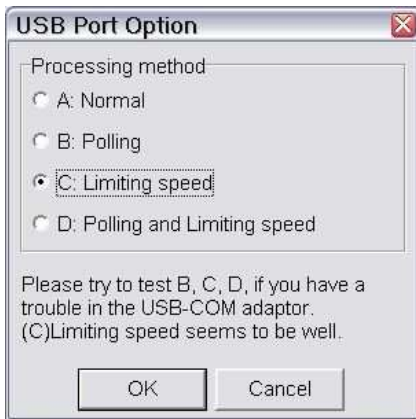
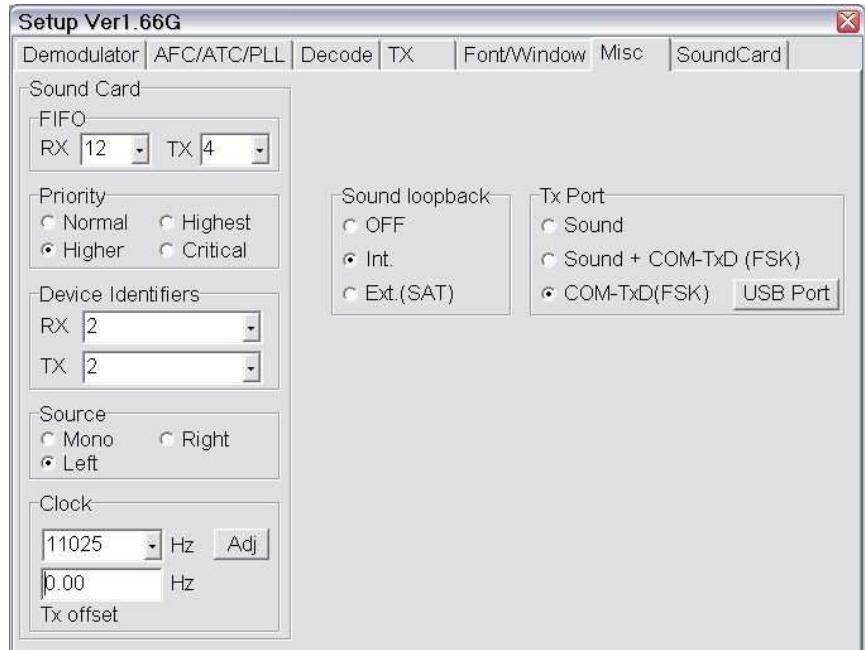
8. Select the "SoundCard" tab.
9. Select USB Audio CODEC for Transmission and Reception.

10. Select the Misc Tab

11. Select **Source = Mono**

12. Set Tx Port to COM-TxD (FSK)

If you want the option to switch between AFSK and FSK, select Sound + COM-TxD (FSK)



13. Click **USB port** button, choose **C: Limiting speed** and click OK