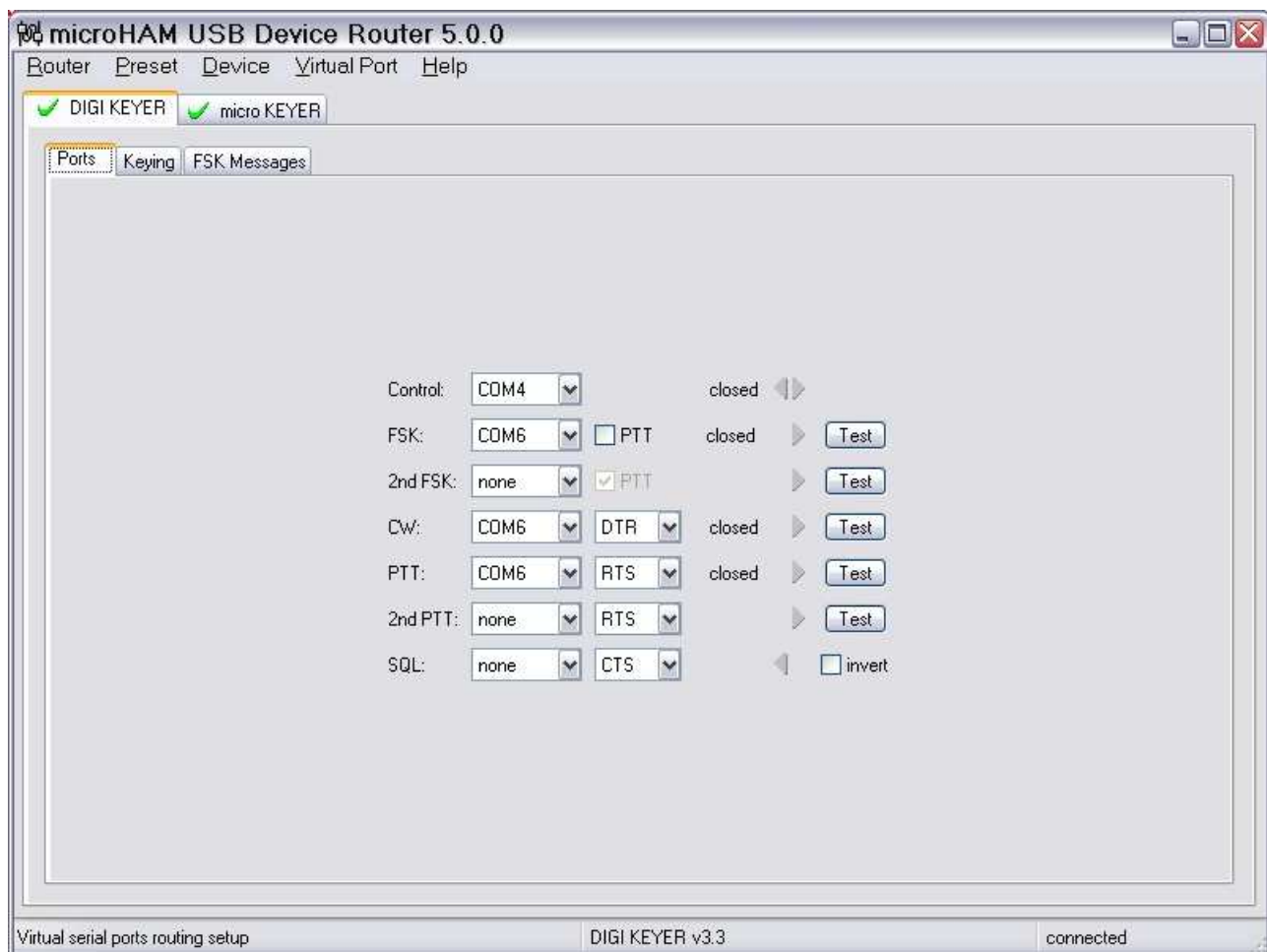


# DigiKeyer and WinWarbler setup guide

## Router setup:

**Note: The absolute port numbers do not matter. The key is consistency - the same port number must be used for a specific function every time it is used.**

1. Assign the radio control virtual COM port (Optional).
2. If you plan to use FSK, assign a port for FSK – uncheck the PTT box.
3. Assign the same port for PTT and CW.
4. Set CW to DTR.
5. Set PTT to RTS.



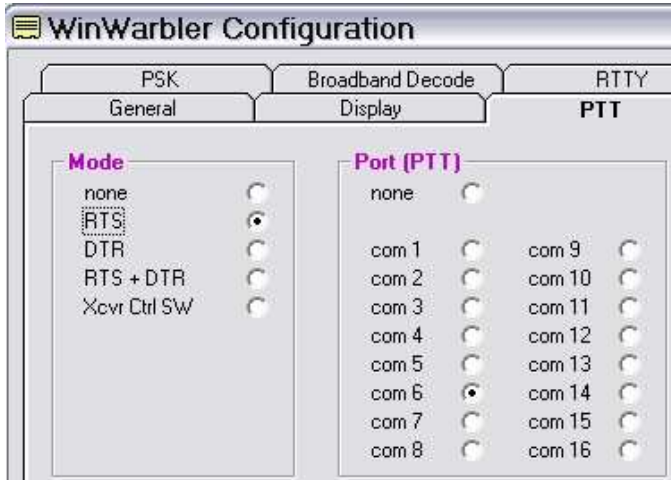
5. Save settings to a preset by selecting menu **Preset | Save as**. Choose a position and name it WinWarbler.

# WinWarbler setup:

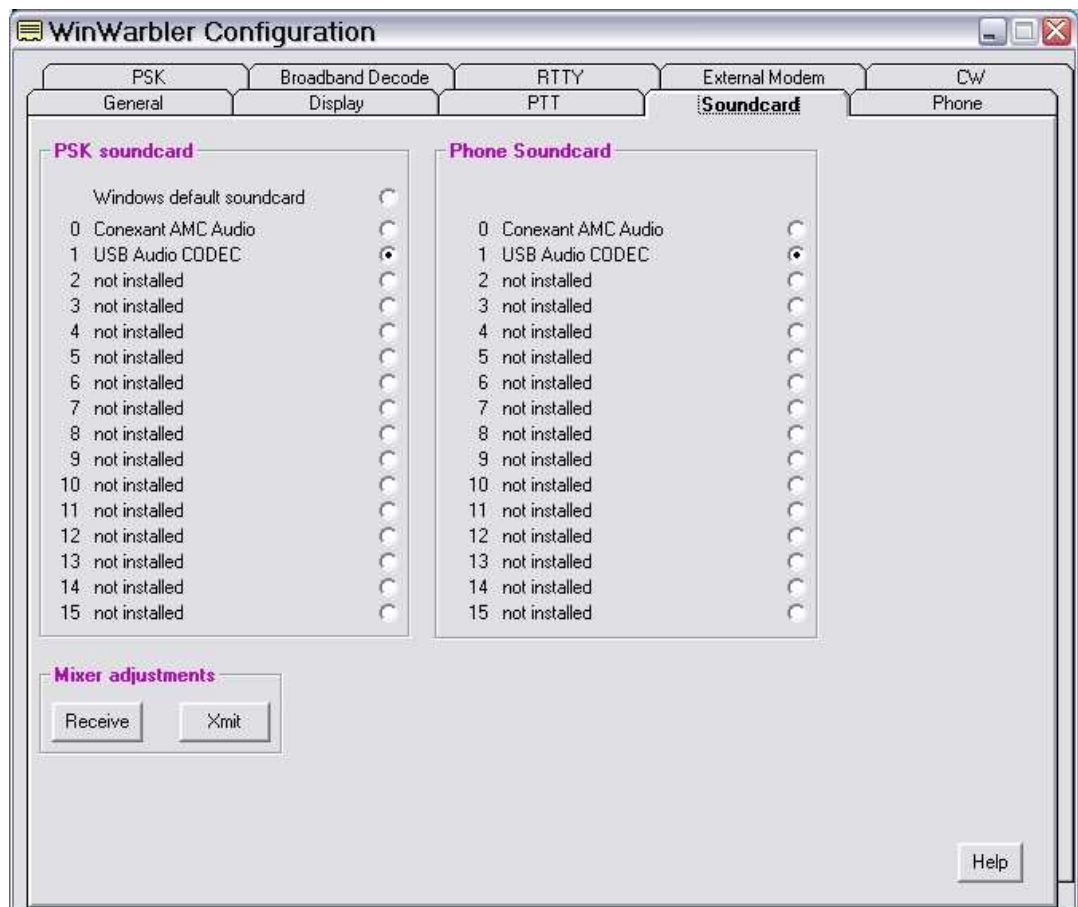
**Note:** It is important to execute the following steps in order. Otherwise PTT, FSK and CW sharing will not operate properly.

This configuration is for WinWarbler in stand-alone mode. To configure and run WinWarbler with Commander and the rest of the DXLab Suite, see the separate [DigiKeyer and DXLab Suite Setup Guide](#).

The user has the option to configure WinWarbler for either FSK or AFSK. Configuration information is provided for both options.

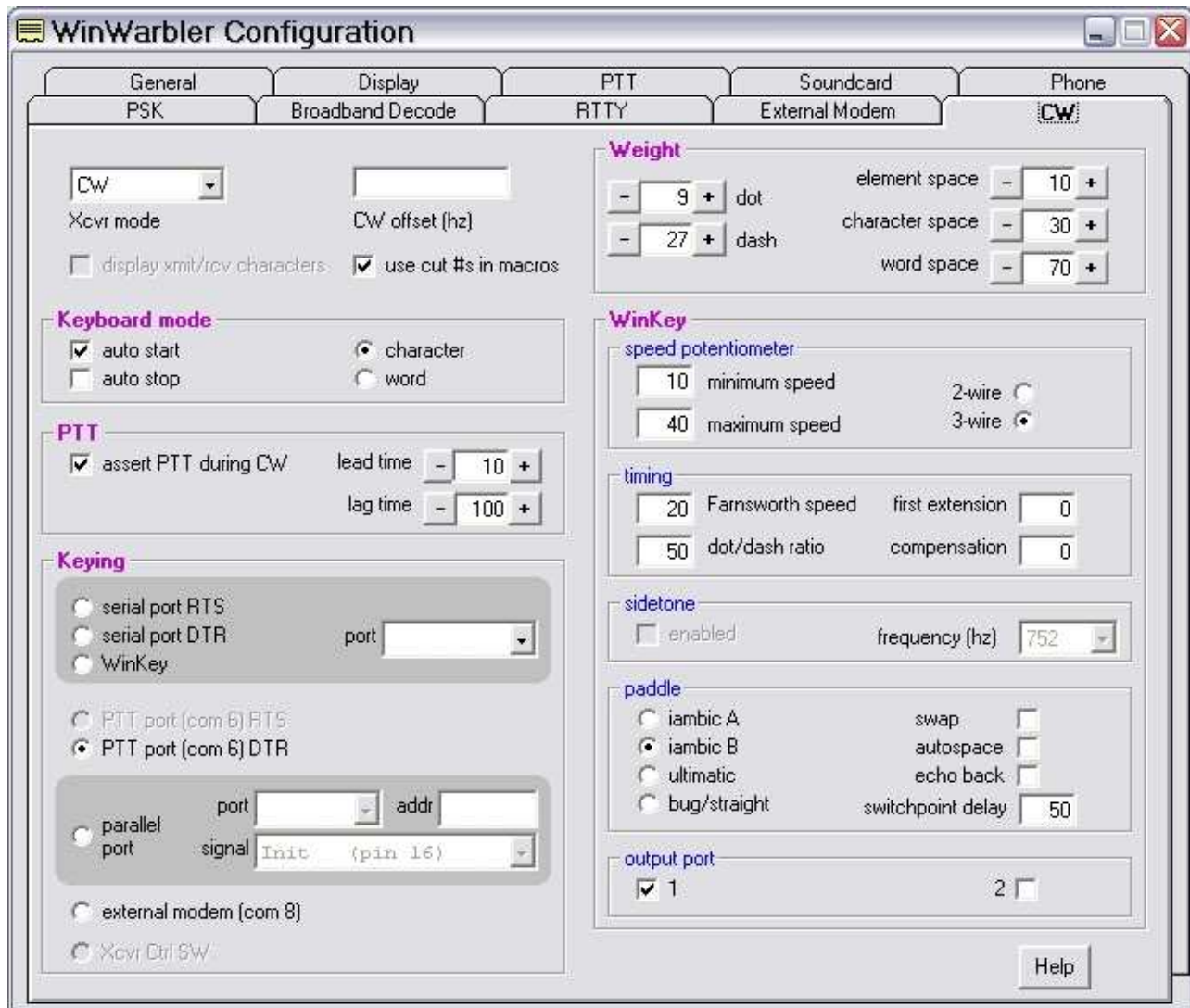


1. Click **Config** and select the **PTT tab** ...
2. Select "RTS" as the Mode.
3. If you plan to use FSK, set "Port" to the port you selected for FSK. Otherwise, set "Port" to the port you selected for PTT.
4. Select the Soundcard tab
5. Choose the USB Audio CODEC as the soundcard to use for PSK.



## CW setup:

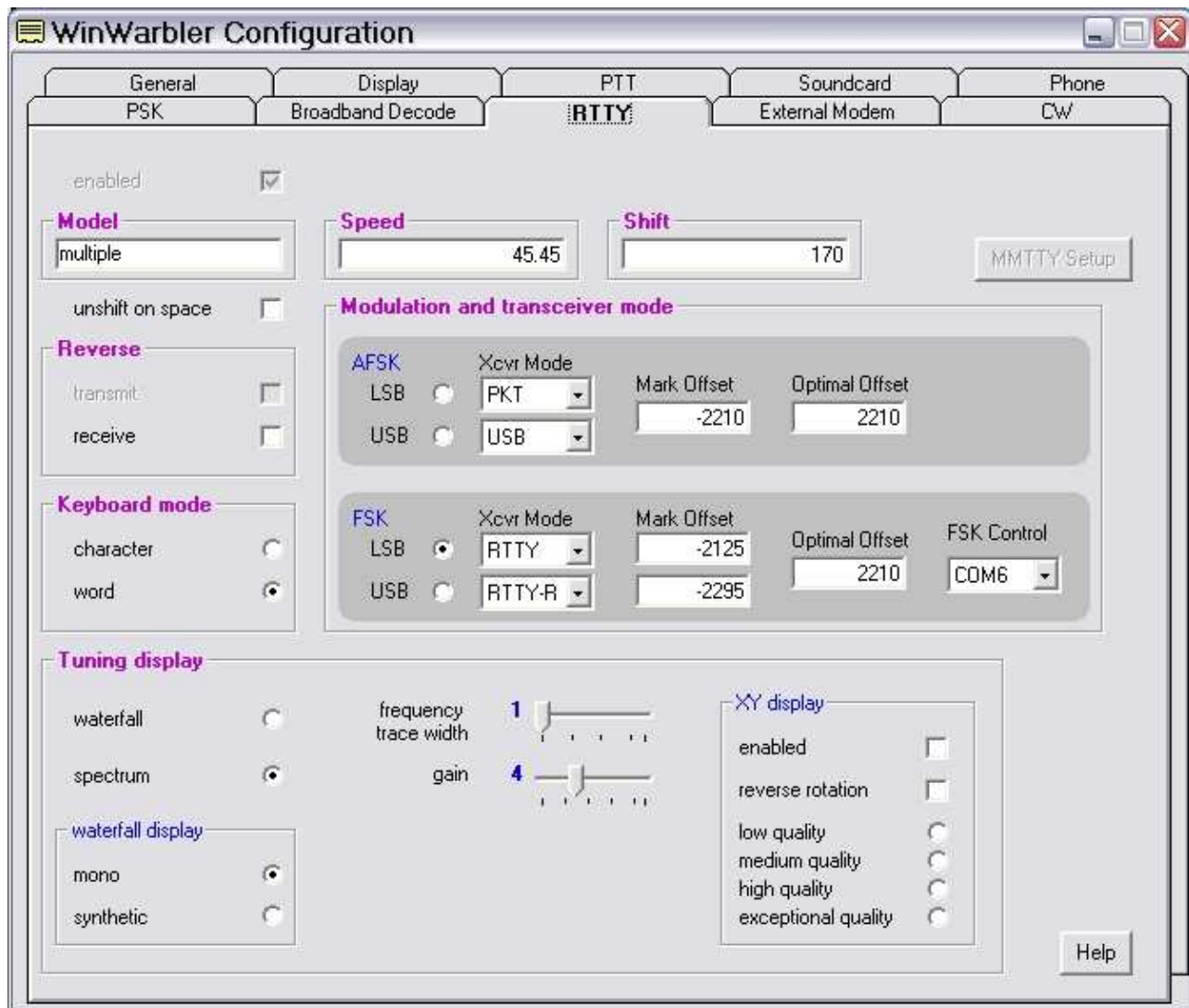
1. Switch WinWarbler to CW Mode
2. Open the WinWarbler's Configuration and select the **CW Tab**.



3. Select **"PTT port"** in the Keying box.
4. Configure the settings you prefer for CW operation including weight, and PTT or QSK operation.

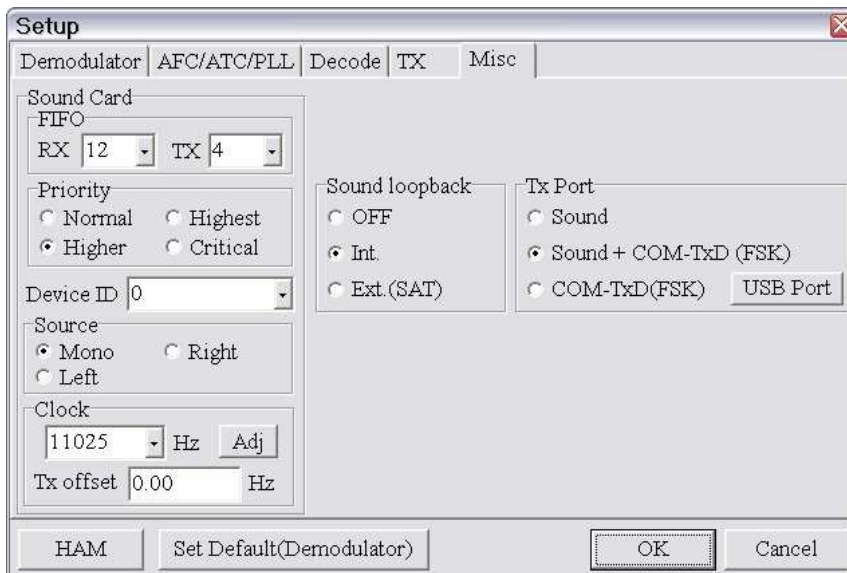
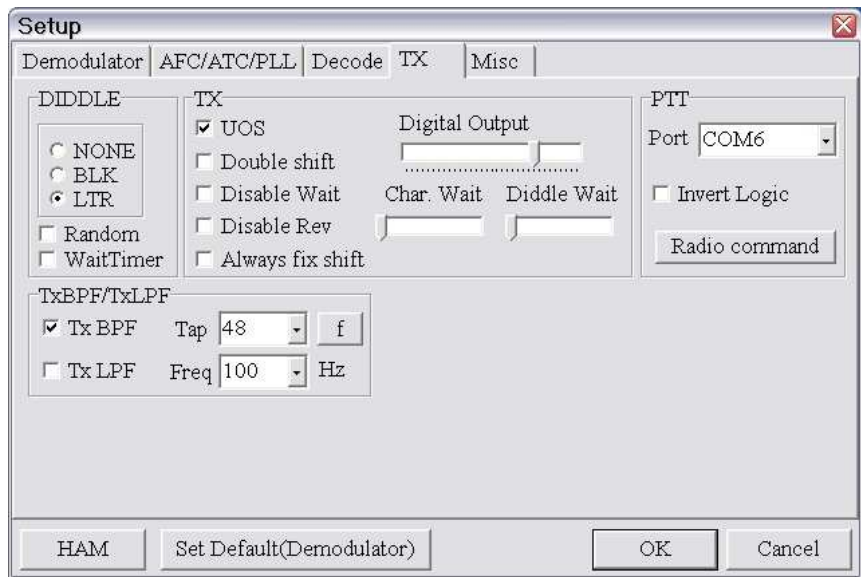
## RTTY/MMTTY setup (FSK):

1. Switch WinWarbler to RTTY mode.
2. Click **Config** and select the **RTTY tab ...**



3. Configure the FSK Settings as needed by your radio
4. Set FSK Control to the port you selected for FSK in Router.

- Click **Config** and select the **RTTY tab ..**
- Click on the **MMTTY Setup** button ...
- Select the **TX Tab ...**
- Select the Port you configured for FSK in Router's Ports Tab in the PTT box.
- Select the **Misc Tab ...**



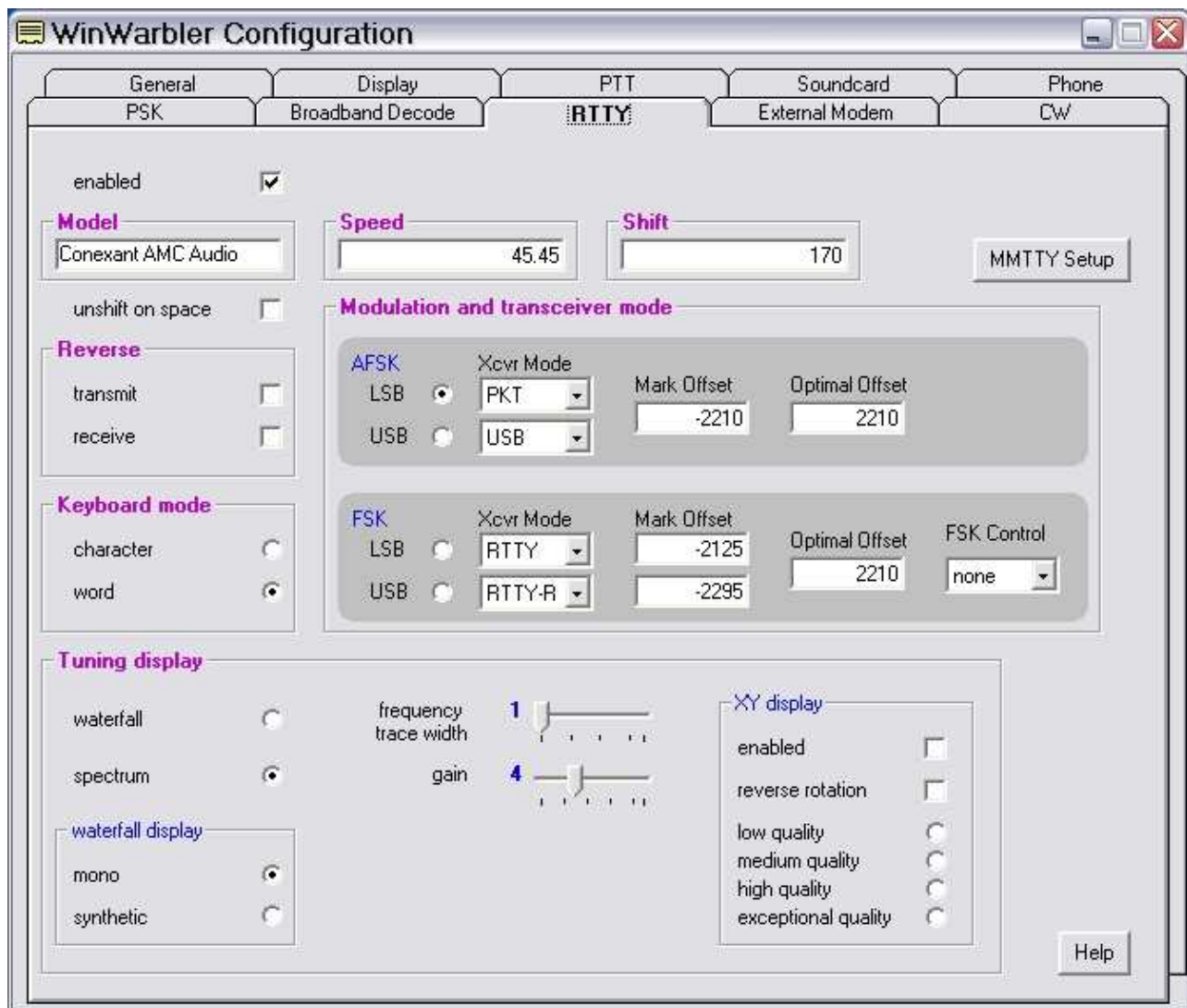
- Select Source **Mono**
- Set Clock **11025**
- Select the proper sound card **Device ID**
- To obtain the proper ID, click **Get ID** button at the Router **Audio Mixer** tab or from WinWarbler's **Soundcard** tab.
- Select COM-TxD (FSK) for the TX Port. If you want the option to switch between AFSK and FSK, select Sound + COM-TxD (FSK)

- Click **USB port** button and choose **C: Limiting speed**



## RTTY/MMTTY setup (AFSK):

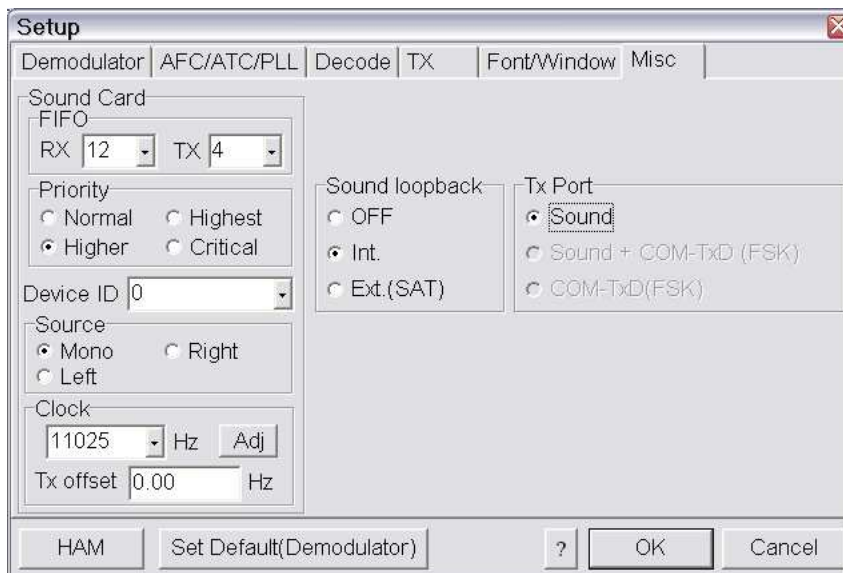
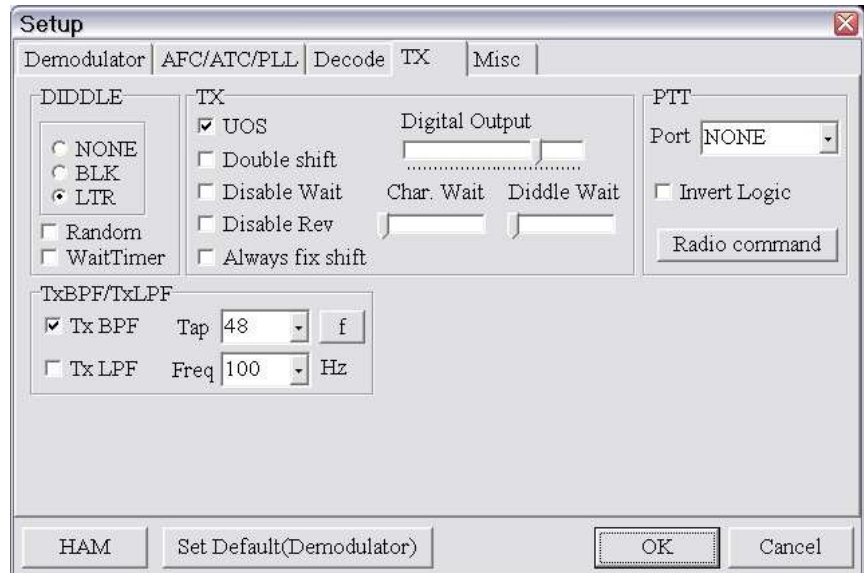
1. Switch WinWarbler to RTTY mode.
2. Click **Config** and select the **RTTY tab** ...



3. Configure the AFSK Settings required by your radio.
4. Set FSK Control to None



5. Click on the **MMTTY Setup** button ...
6. Select the **TX Tab** ...
7. Select NONE in the PTT Port box.
8. Choose the **Misc Tab**.



9. Select Source **Left**
10. Set Clock **11025**
11. Select the proper sound card **Device ID**
12. The Device ID is available from WinWarbler's **Soundcard** tab or by clicking the **Get ID** button on Router's **Audio Mixer** tab.
13. Select "Sound" as the TX Port.