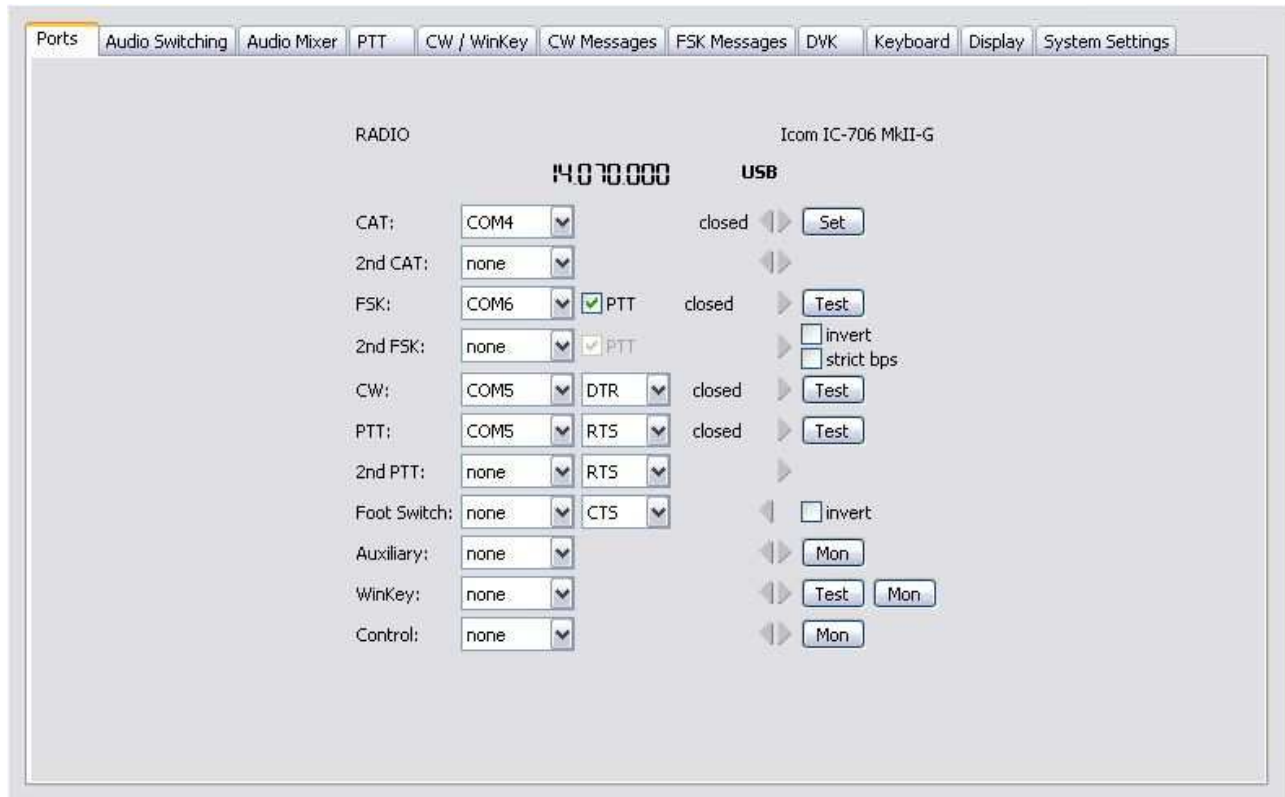


# microKeyer II and WinPSKse Setup

## **Router setup:**

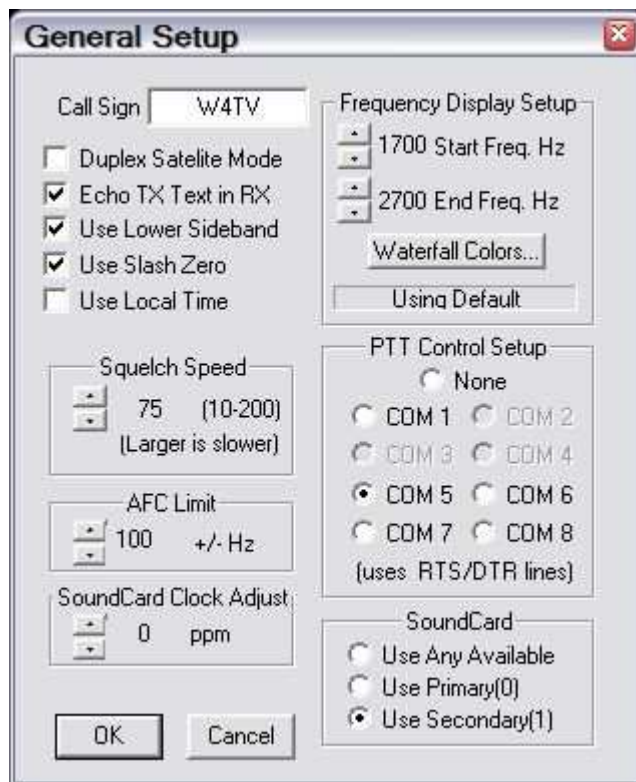
Note: The absolute port numbers do not matter. The key is consistency - the same port number must be used for a specific function every time it is used.

1. Assign a port for PTT – WinPSKse provides no support for radio control, FSK or CW
2. If you assign a port for the Radio to allow a logging program to record operating frequency, click "Set" and select your radio.



3. On the **PTT** tab, use **PTT1** for VOICE, **PTT1 or QSK** for CW and **PTT2** for FSK/DIGITAL.
4. Save settings to a preset by selecting menu **Preset | Save as**. Choose a position and name it WinPSKse.

## WinPSKse setup:



1. Click **Configure | Serial Port ...**
2. In the PTT Control Setup box, select the serial port you chose for PTT on Router's Ports tab.
3. Select the primary (default) or secondary sound card in the SoundCard box.
4. Make other settings as appropriate for your equipment.
5. Click "OK"