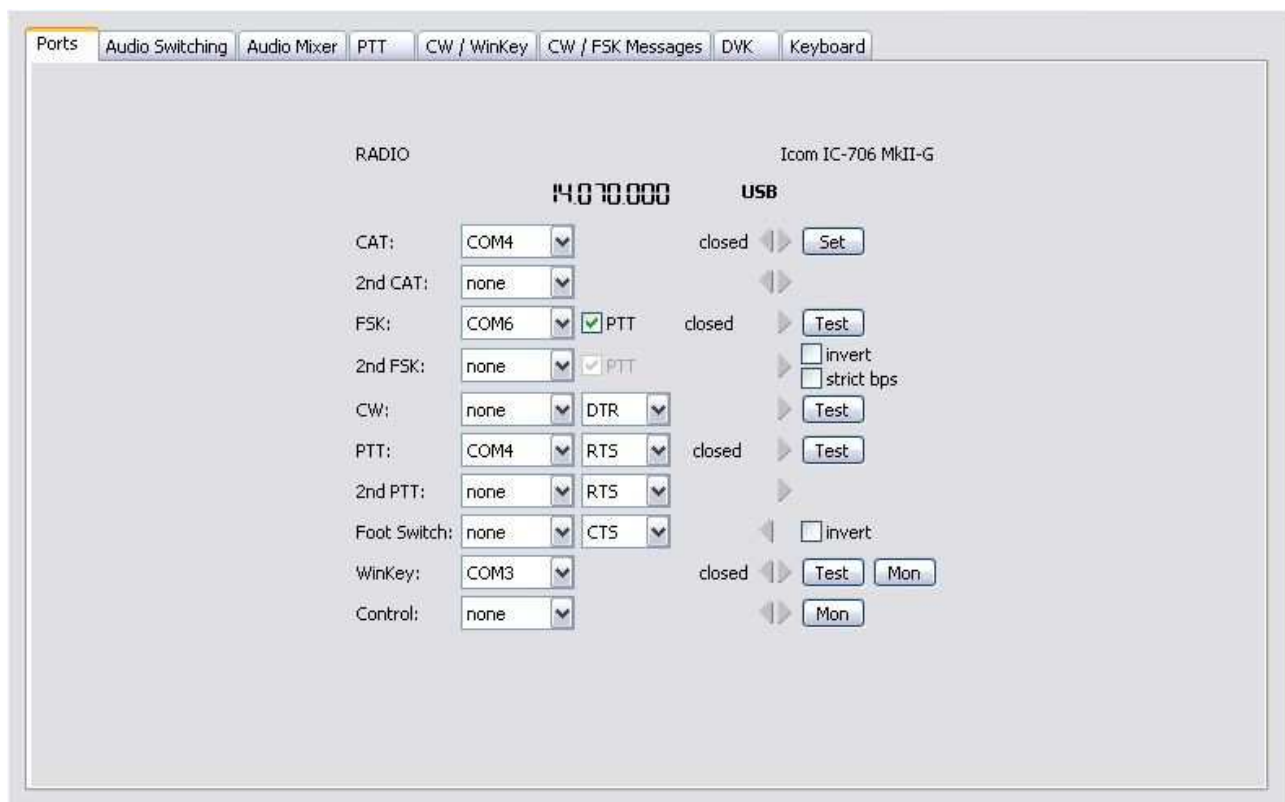


microKEYER and DX4Win Setup

Router setup:

Note: The absolute port numbers do not matter. The key is consistency - the same port number must be used for a specific function every time it is used.

1. Assign the radio control virtual COM port. Click the **Set** button and select the radio from the drop down box. Uncheck the **Disable router queries** box.
2. Assign a port for WinKey
3. Assign the same port for PTT as you used for the Radio.
4. Assign a port for FSK and check the PTT box. If your radio does not support FSK or you will be using AFSK, you can skip this step.



5. On the **PTT** tab, select **PTT1** for Voice, **PTT1 or QSK** for CW and **PTT2** for DIGITAL/FSK.
6. Save the settings to a preset by selecting **Preset | Save as**. Choose a position and name it DX4Win.

DX4Win setup:

1. Click **File | Preferences** to open the Setup Preferences notebook ...

Setup Parameters

File

Radio

Type: **YaesuFT2000-U8c** Address: **00** Baudrate: **4800**

Default Default

Notes for radio: **Modified by ON4AOI and K2RD**

COM Port: **COM4** Poll rate (ms): **500** Max tries: **6** DTR high RTS high

Second Radio

Type: **None** Address: **00** Baudrate: **0**

Default Default

Notes for radio:

COM Port: **COM1** Poll rate (ms): **500** Max tries: **6** DTR high RTS high

Personal
Station
QSO
Screen
Import
Radio
Control
CW
Packet1
Packet2
RTTY
Ext Data
F2 Key
DXCC
WAS
WAZ
WPX
Rep/Lab

2. Select the Radio page and assign your radio Assign the radio to the virtual COM port you used in Router's Ports tab
3. Set the baudrate required by your radio.
4. For Icom and certain TenTec radios, set the CI-V address.

5. Select the CW page
6. Select WinKey as the CW Device type
7. Set the virtual port you chose for WinKey on Router's Ports tab for the External Keyer.
8. Set the virtual port you chose for Control and PTT on Router's Ports tab for PTT control. Select PTT control for the RTS line.

Setup Parameters

File

Device type: **WinKey** Radio 1/2 signal: **None**

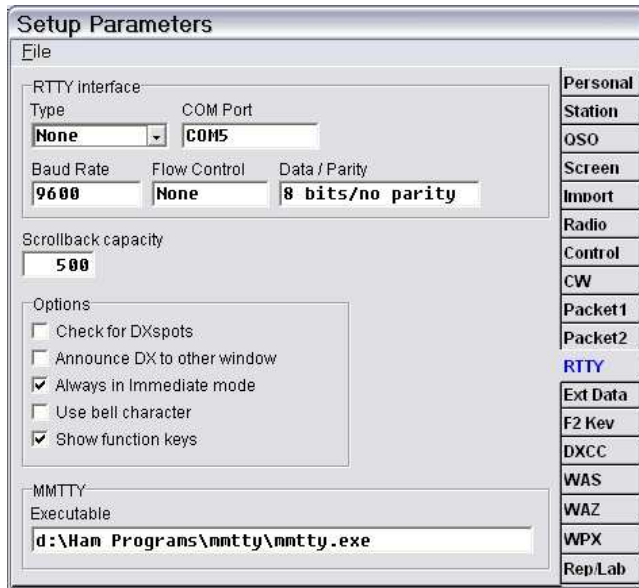
Software CW keying / PTT control

Interface: **COM4** PTT delay: **10** DTR line: **None** RTS line: **PTT control**

External keyer

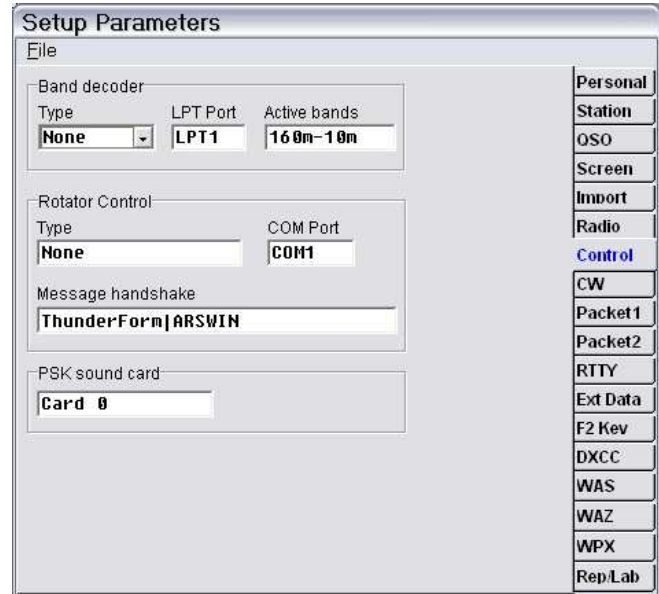
Port: **COM3**

Personal
Station
QSO
Screen
Import
Radio
Control
CW
Packet1
Packet2
RTTY
Ext Data
F2 Key
DXCC
WAS
WAZ
WPX
Rep/Lab



9. Select the RTTY page.

10. Enter the path to the MMTTY Executable file.



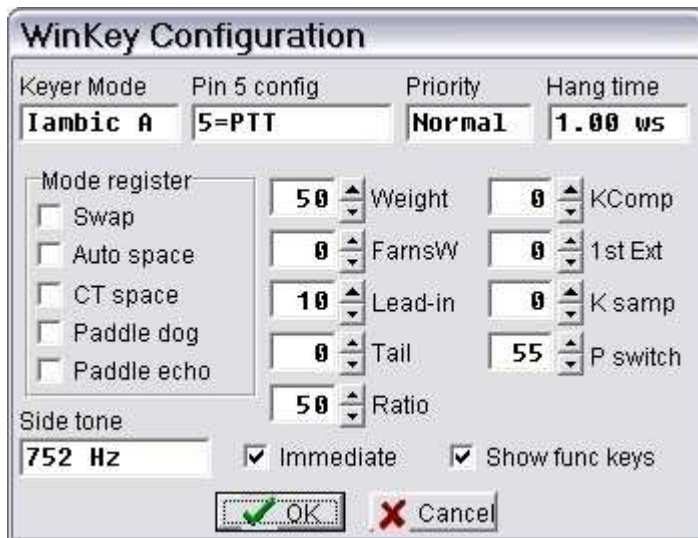
11. Select the Control page.

12. Select the **PSK sound card**.

To get the sound card number:

In Windows 2000 or XP, click the **Get ID** button on Router's **Audio Mixer** tab.

In Vista or Windows 7, click the "Sound Card" button on the Audio Switching tab.



13. Open the CW Keyboard (ALT-K)

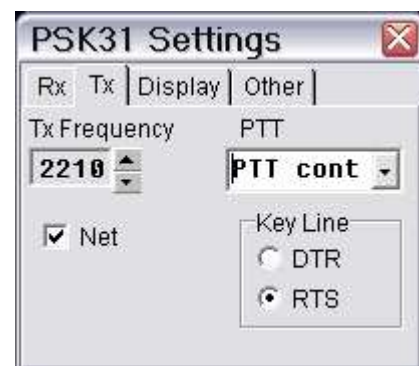
14. Open the CW Keyboard settings (Alt-S)

15. Configure the settings you prefer.

Note: The values for Keyer Mode, weight, PTT vs. QSK, etc. are set on Router's CW/Winkey and PTT tabs. Application settings are ignored.

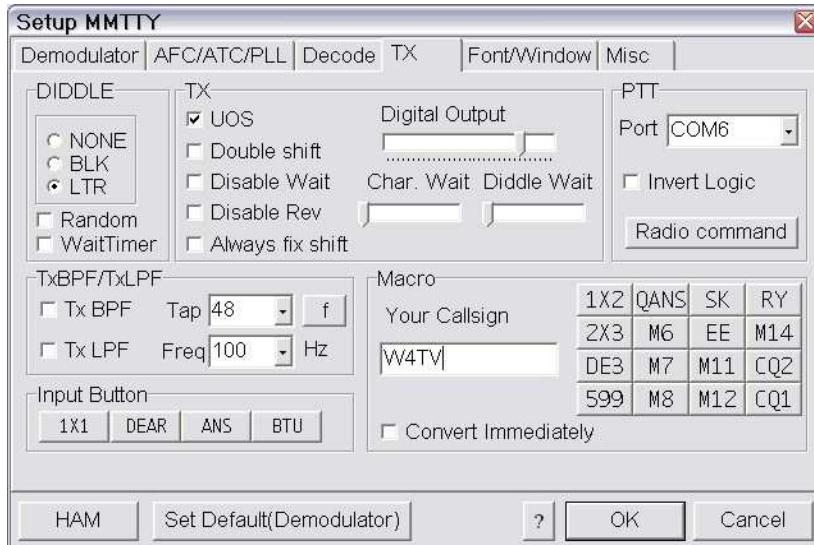
16. Open the PSK31 window (ALT-3)

17. Select the TX tab and set PTT to "PTT control"



MMTTY setup:

If you plan to operate FSK with the MMTTY window you will need to first configure MMTTY in stand-alone mode.



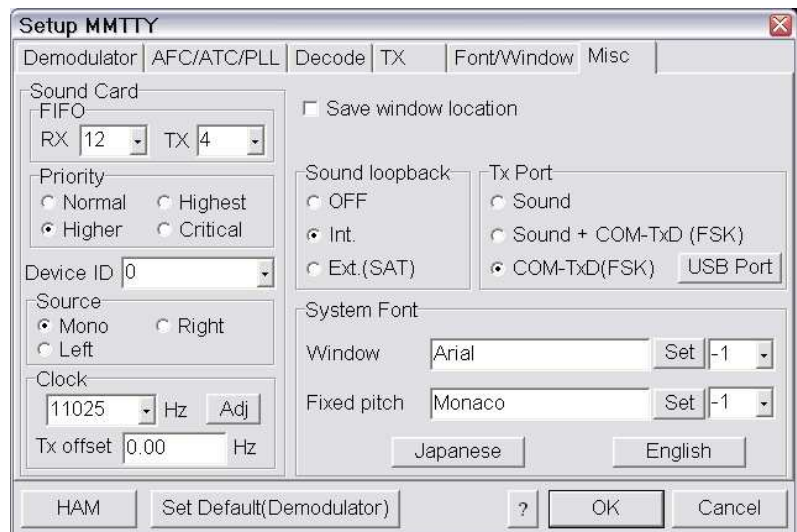
1. Open MMTTY from the Start menu.
2. Select **Options | Setup MMTTY**.
3. Select the TX Tab
4. Choose the FSK port you set on Router's Ports tab for the PTT Port.

5. Choose the **Misc Tab**.
6. Select **Source Mono**
7. Select clock **11025**
8. Select the proper Sound card **Device ID** number.

To get the sound card number:

In Windows 2000 or XP, click the **Get ID** button on Router's **Audio Mixer** tab.

In Vista or Windows 7, click the "Sound Card" button on the Audio Switching tab.



9. Select COM-TxD (FSK) for the TX Port. If you want the option to switch between AFSK and FSK, select Sound + COM-TxD (FSK)



10. Click **USB port** button and choose **C: Limiting speed**
11. Close MMTTY
12. If you intend to use only AFSK, start DX4Win and open the MMTTY Window
13. Open the Keying Settings (ALT-S)
14. Select "PTT control" and RTS

