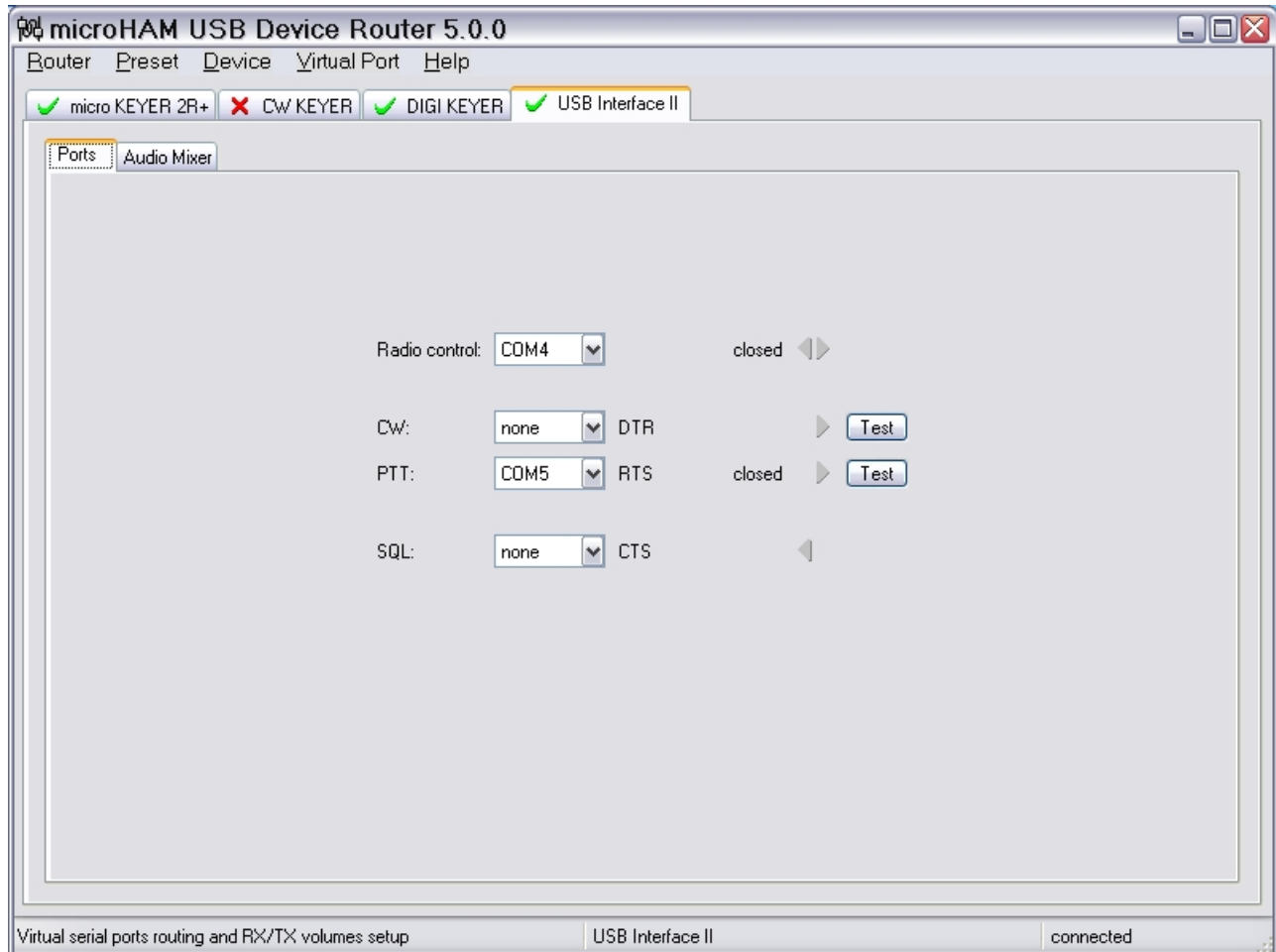


USB II and DigiPan setup guide

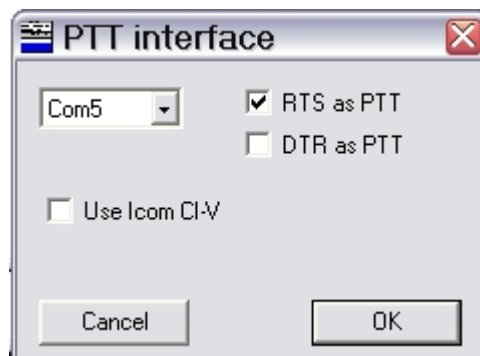
Router setup:

Note: The absolute port numbers do not matter. The key is consistency - the same port number must be used for a specific function every time it is used.

1. Assign a port for PTT – DigiPan provides no radio control, FSK or CW



2. Save settings to a preset by selecting menu **Preset | Save as**. Choose a position and name it DigiPan.



DigiPan setup:

1. Click **Configure | Serial Port ...**
2. Select the serial port you chose for PTT on Router's Ports tab.
3. Select RTS as PTT
4. Click "OK"