

# USB Interface III

*microHAM*

fax: +421 2 4594 5100  
e-mail: [support@microham.com](mailto:support@microham.com)  
homepage: [www.microham.com](http://www.microham.com)



Version 8.0  
1 March 2016

## TABLE OF CONTENTS

CHAPTER	PAGE
<b>1. FEATURES AND FUNCTIONS .....</b>	<b>3</b>
<b>2. IMPORTANT WARNINGS .....</b>	<b>3</b>
<b>3. PANEL DESCRIPTION .....</b>	<b>4</b>
Rear Panel .....	4
Front Panel .....	4
<b>4. INSTALLATION .....</b>	<b>5</b>
Preparing for Use.....	5
Macintosh (OS X) Installation.....	6
Windows Installation .....	6
Installing <i>microHAM</i> USB Device Router .....	6
Configuring USB Audio CODEC .....	7
Configuring <i>microHAM</i> Device Router .....	8
Creating and Using Virtual Ports .....	8
<b>5. <i>microHAM</i> DEVICE ROUTER .....</b>	<b>9</b>
Menu: Router .....	9
Menu: Preset .....	9
Menu: Device .....	11
Menu: Virtual Port .....	12
Menu: Help .....	12
Ports Tab.....	13
Radio Port .....	13
CW Port.....	14
PTT Port.....	14
Squelch Port .....	14
<b>6. SETTING AUDIO LEVELS.....</b>	<b>15</b>
<b>7. SYSTEM CONSIDERATIONS .....</b>	<b>17</b>
<b>8. PACKAGE CONTENTS .....</b>	<b>18</b>
<b>9. WARRANTY .....</b>	<b>18</b>
<b>10. SPECIFICATIONS .....</b>	<b>19</b>
Hardware Specifications .....	19
 <b>DECLARATION OF CONFORMITY .....</b>	 <b>20</b>
 <b>APPENDIX A - DB15 RADIO CONNECTOR .....</b>	 <b>21</b>
 <b>APPENDIX B – FSK WITH MMTTY.....</b>	 <b>22</b>
 <b>APPENDIX C – RFI Considerations.....</b>	 <b>23</b>
 <b>APPENDIX D – Cables and Bridges .....</b>	 <b>24</b>

## 1 - FEATURES AND FUNCTIONS

- **No Serial or Parallel port necessary, just one USB port**
- **Complete "Computer <-> Radio" isolation**
  - bidirectional transformer isolation of audio signals
  - optical isolation of ALL digital signals: Radio Control, CW, PTT, FSK
- **Compatible with all MS Windows based logging or control software**
  - the special microHAM "USB Device Router" program creates virtual COM ports for full operation with standard Windows applications.
  - customizable presets allow instantly changing USB Interface III parameters to match the program currently in use
- **Compatible with non-Windows logging or control software**
  - uses industry standard USB UART (FTDI) drivers
  - uses industry standard USB Audio (TI/Burr-Brown) drivers
- **Integrated computer control port for all radios CI-V, FIF-232, IF-232, RS-232**
  - fully supports Icom, Kenwood, TenTec, Yaesu and other radios
  - no separate level converter required
- **Squelch input for additional software control**
- **Strong RFI immunity**
  - integrated chokes and filters for best RFI immunity
  - advanced shielding and circuit design for RFI product suppression
- **Connections:**
  - Computer – USB
  - Radio – DB15
- **Front panel LEDs for easy visual feedback of CW, PTT, SQL, POWER and radio control data**
- **Metal/Aluminum case, powder coated and silk screened**
- **Free, no time limit, on-line firmware/software upgrades**

## 2 - IMPORTANT WARNINGS

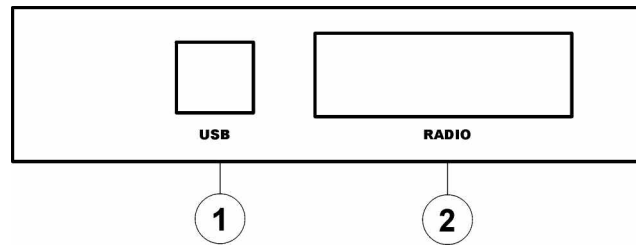
**You must set the CAT level jumpers inside the USB Interface III before using it for the first time.**

**If you power USB Interface III from an external power supply ALWAYS check the polarity of the external 13.8 V supply.**

**If your radio includes upgradeable firmware, DO NOT perform any upgrade through USB Interface III.**

### 3 - PANEL DESCRIPTION

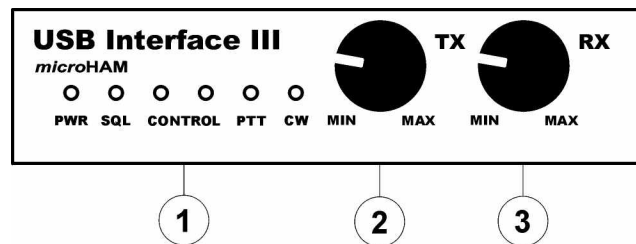
#### Rear Panel



(1) - **USB:** USB B connector for attachment to computer. Connect a standard USB A-B cable.

(2) - **RADIO:** DB15F connector for radio interconnection – a detailed description is in Appendix A

#### Front Panel



- (1) – **POWER:** YELLOW color indicates when unit is powered
- SQL:** GREEN color indicates when squelch is active
- CONTROL:** RED color indicates when radio sends data to computer  
GREEN color indicates when computer sends data to radio
- PTT:** RED color indicates when PTT is active
- CW:** RED color indicates when CW is active
- (2) – **TX:** Transmit Audio Level
- (3) – **RX:** Receive Audio Level

## 4 - INSTALLATION

Installing USB Interface III consists of several steps:

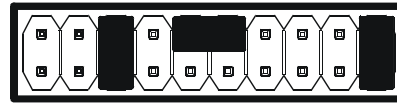
- 1) prepare USB Interface III to work with your radio
- 2) Install the necessary driver software for your operating system.
- 3) Configure the driver and/or application software for your specific system
- 4) configure the USB Audio CODEC
- 5) configure Router

### Preparing USB Interface III for Use

1. Remove the top cover from the USB Interface III and set the CAT jumpers as shown in the following chart. The CAT interface jumpers must be configured to select the proper level for each radio type.

**RS-232 levels:**

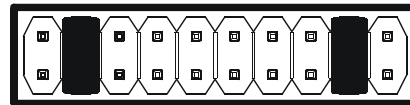
All transceivers with RS-232 CAT inputs.



**RS232**

**IF-232 levels:**

**Kenwood:** TS-140, 440, 450, 680, 690, 711, 790, 811, 850, 940, 950



**IF232**

**FIF-232 levels:**

**Yaesu:** FT-100, 736, 747, 757GXII, 767, 817, 840, 857, 890, 897, 900, 980, 990, 1000, 1000D



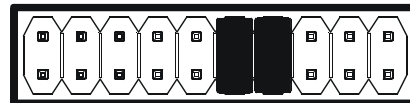
**FIF232**

**CI-V levels:**

**Icom:** all radios

**TenTec:** all radios with 3.5 mm jack

**NOTE:** the CAT interface is not configured at the factory.



**CI-V**

2. Plug the DB15M on the radio cable set into the DB15 connector on the rear panel of the USB Interface III and plug ALL connectors from the cable set to the appropriate jacks at the rear panel of your transceiver. Each connector on the radio interface cable is marked same as the matching jack on your transceiver.
3. If the radio cable ends with leads for external power, connect these leads to a 12-16V DC power supply. **Be sure to observe the proper polarity.**
4. Prepare but do not connect the USB cable from USB Interface III to your computer.
5. If you will be installing on a Windows computer, skip to "Installing *microHAM* USB Router"

## Mac OS X INSTALLATION

1. Insert the microHAM CD in your CDROM/DVD drive and navigate to Drivers/OS-X or use your web browser to go to <http://www.ftdichip.com/Drivers/VCP.htm> and download the latest driver image for OS-X.
2. Open FTDIUSBSerialDriver\_v2\_2\_14.dmg by clicking on it.
3. For OS-X 10.4, 10.5 or 10.6 open FTDIUSBSerialDriver\_10\_4\_10\_5\_10\_6 and follow the instructions to install.
4. Plug in the USB cable
5. Turn on the radio or external power supply.
6. Follow your software developer's instructions to configure their application to work with USB Interface III.



## MICROSOFT WINDOWS INSTALLATION

### Installing *microHAM* USB Device Router



The Windows setup utility will start and ask into which folder Router and its supporting files should be installed. Note: unless you have a very strong reason to install Router elsewhere, please accept the default location.

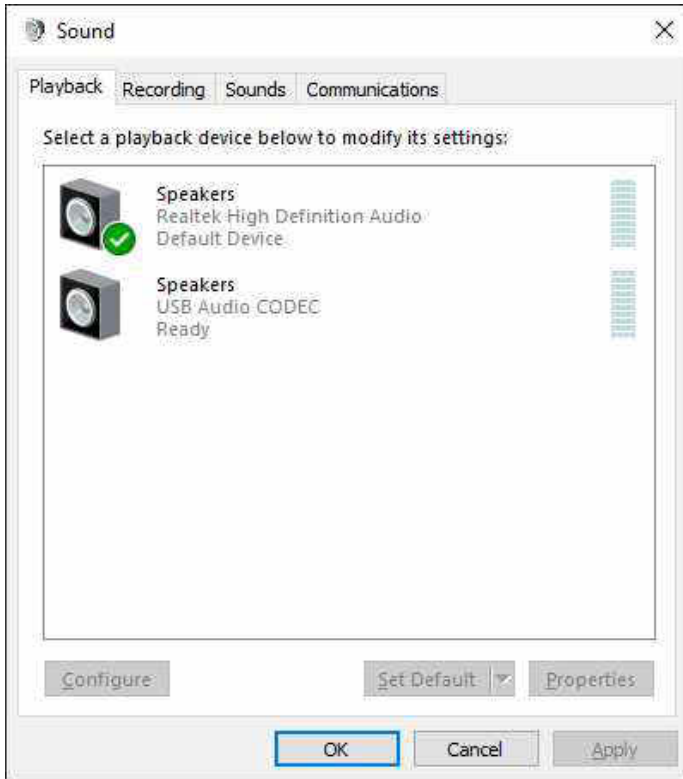
3. When the Router installation is completed, click "Finish" to launch Router for the first time.
4. Plug in the USB cable and proceed to configuring Router for your station and software.

1. To install Router click on the **Install USB Device Router** link on the installation CD or download the most recent installation package from the web site: [www.microHAM.com/downloads.html](http://www.microHAM.com/downloads.html).
2. If you download an updated package, right click on "urouter\_release\_xx\_xx.exe" (xx\_xx is version) and choose "Run as administrator" to start installation.



## Configuring USB Audio CODEC

Windows will automatically install the USB Audio Device driver to support the USB Audio CODEC in USB Interface III.

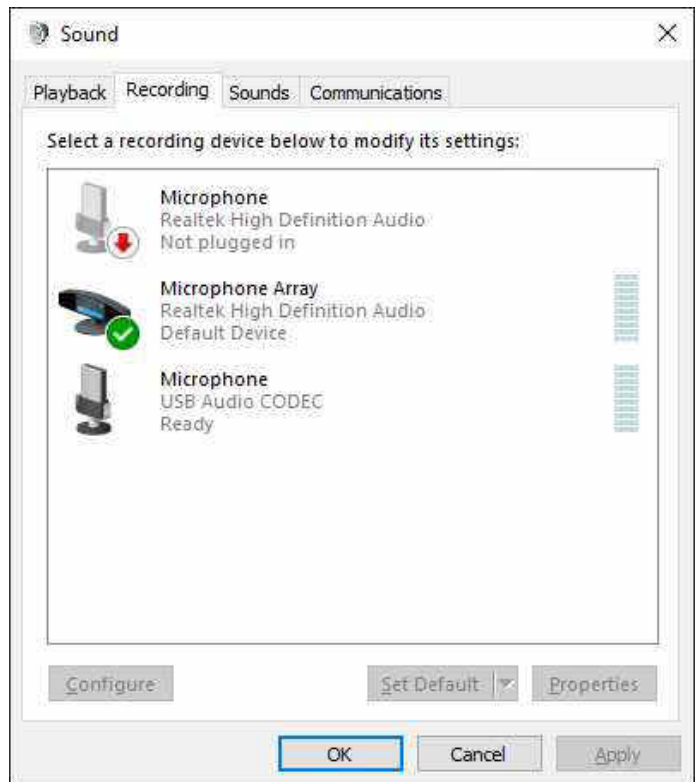


Windows automatically selects any newly installed audio device as the default device for Sound Playback and Sound Recording. This is undesirable as Windows Sounds would be played through USB III and onto the air!

Open "Sound" in the Control Panel or right click on the Speaker Icon on the Taskbar and select "Playback." Reset the Default Device and Default Communications Device (if it exists) to Speakers of your computer's primary sound device.

Select "Recording." Reset Default Device and Default Communications Device to an input on the internal (primary) sound card in your computer.

Double click on "Microphone" USB Audio Codec device, click on Advanced tab and verify that the Default Format is set to 2 channel.



## Configuring *microHAM* USB Device Router

The *microHAM* USB Device Router (Router) program provides a Windows compatible *configuration tool* for *microHAM* USB Devices (USB Interface III as well as *microKEYER*, CW Keyer and USB Interfaces) and *software interface* to other Windows applications (loggers, digital mode software, etc.). The software interface is provided as *Virtual Serial Ports*.

To configure and use USB Interface III with Windows compatible application programs it is necessary to have installed the USB driver, started the Router, and applied power to USB Interface III by turning on the attached radio or external power supply. Router is then configured to match the requirements of the application (logger or digital mode) software.

## Creating and Using Virtual Serial Ports

*microHAM* Router provides a set of virtual serial ports which allow Windows applications (loggers and digital software) to work with USB Interface III just as they would work with "real" (hardware) serial ports.

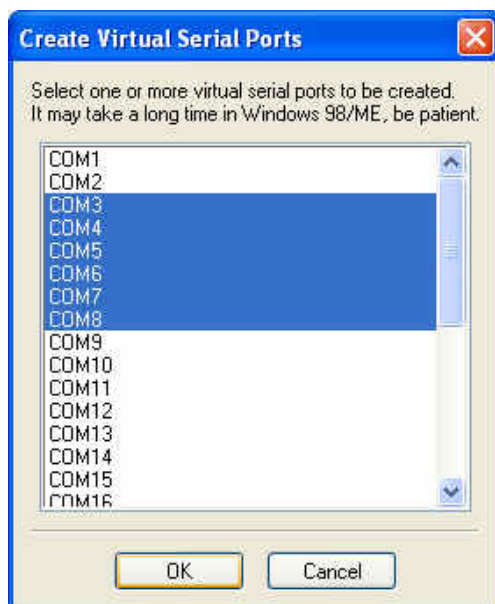
In order to use these virtual Ports, you must first create the ports and then assign a function (radio control, PTT, CW, FSK, etc.) to each virtual port.

**DO NOT** define a port that is already in use (for example, COM1 or COM2 which are hardware ports on many motherboards) or a virtual port used by another USB device. Router will not allow using a COM port number which is already present in the system but ports are sometimes hidden. If a another device which also uses virtual serial ports (external USB devices, bluetooth devices, PDA etc ...) is not connected to the computer when creating virtual ports in Router, the ports can overlap and will not work properly when you connect such device.

**IMPORTANT WARNING:** Before creating virtual COM ports, attach all external devices you will use with the computer. Restart Router and then create the virtual COM ports.

Virtual ports are created from the Virtual Port menu.

**Create** - Creates virtual COM ports. It is possible to select more than one port at a time by holding the *Ctrl* key and clicking several port numbers. Creating virtual ports may take a while, be patient.



**Delete** - Deletes any single virtual port.

**Delete All** - Deletes all previously created virtual ports.

Do not delete a virtual port until all applications using that port have been closed.



**TIP:** It is possible to select multiple ports at one time by holding *Ctrl* key on keyboard and clicking on the COM port numbers.



**TIP:** If you have uninstalled another device which used virtual ports and Router does not offer the released COM port number you will need to reset the virtual port bus. You can do this by deleting all virtual ports in Router at once. Select "Virtual Port | Delete All" then create the ports again. Any missing COM port number should appear.



## 5 - microHAM USB DEVICE ROUTER ROUTER MENU

**Default Router Settings:** used to completely reset Router to factory (default) settings.

"Default" removes all device tabs and deletes all stored configuration data, including all user presets. from the Windows Registry.

**Restore Router Settings:** used to restore settings from a urs file created by the backup command.

A urs file can be used only with the device for which it was generated (the file contains the unit serial number) on a computer with same port assignments.

**WARNING:** Restoring a backup replaces all current Router settings including presets, **use it carefully!**

**Backup Router Settings:** used to create backup urs file.

This file contains Router settings (including Presets) for all devices defined in Router.

### Options | General

- *Load Router on Start-up:* when checked, Router will start automatically each time the computer is started or rebooted.
- *Start Router Minimized:* when checked, Router will started minimized

### Options | Band Map: - Does not apply to USB Interface III -

Customizable band edge boundaries used to drive the band data output. BCD codes can be customized for driving antenna switches or bandpass filter control. This setting is not used with USB Interface III.

### Options | Digital Band Map: - Does not apply to USB Interface III -

Customizable band limits for digital mode operation. This setting is used to automatically select VOICE or DIGITAL audio switching and the proper PTT output (PTT1/PTT2). The boundaries are necessary for transceivers which do not have a special mode for AFSK operation or do not provide this information via computer control. This primarily effects Kenwood and TenTec transceivers although it is also applicable to some older Icom and Yaesu radios.

### Options | Audio Devices:

- ***Don't use audio devices:*** when checked, Router does not use audio devices and the settings on the Audio Mixer and DVK tabs have no effect.
- ***Manually assign audio devices:*** when checked, Router will allow the user to select audio devices (sound card) in the appropriate fields at Audio Mixer tab and will actively control the audio devices
- ***Automatically assign microHAM audio devices:*** when checked, Router will automatically assign proper audio device of the same name if multiple microHAM interfaces of the same kind are connected to the one computer. - **Does not apply to USB Interface III -**

### Options | DVK: - DVK not supported by USB Interface III -

- ***Voice message time limit:*** maximum time for each voice message up to 120 seconds.
- ***Sample rate:*** sampling frequency used during recording and playback of voice messages.
- ***Sample size:*** sampling size used during recording of voice messages. Sampling size primarily effects audio quality of the messages. 16bit samples provide higher quality than 8bit.

### Options | USB:

- ***Noise immunity:*** selects how many times an undelivered USB packet will be repeated before the USB device is disconnected from the operating system.

- **Response time:** selects how long the USB chip in a device will wait for additional data before sending data to the operating system.

**Minimize:** Clicking this will minimize Router to the system tray at the bottom right corner of the Windows Taskbar (the "System Notification Area").



**TIP:** When Router is minimized you can restore it by double-clicking on the Router tray icon. You can also restore Router by double-clicking on the Router icon on the desktop or restarting Router from the Programs menu.

**Exit:** Clicking on this item will terminate Router.

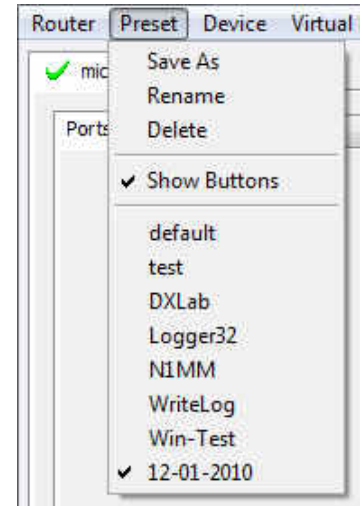
**NOTE:** when Router is terminated, application software will no longer be able to communicate with USB Interface III and the radio.

## PRESET MENU

The requirements of each application (logging, control and digital mode programs) are different and each program handles radio control, CW / FSK/PTT keying, and the sound card its own way. In some instances what works for one application may not work properly with another. To get maximum performance from USB Interface III, you may wish to customize the settings for each application.

For easy switching among applications, Router supports up to 12 **user definable Presets**. Different configurations can be stored in these presets and recalled almost instantly simply by clicking on the preset button.

Each preset contains the settings for all devices connected to, and controlled by Router. For example, if Router controls a DIGI KEYER, a microKEYER, a CW Keyer and a USB Interface III, each preset remembers the settings for all four devices including the assignment of COM ports and the contents of all sub-tabs except the FSK/CW Messages tab.

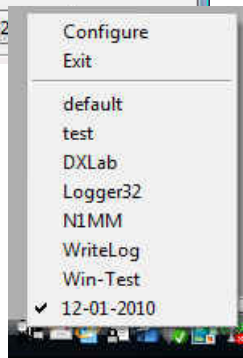


There are three ways to apply a preset once it is created:

1. Click on **Preset** and select the desired preset from the pull-down menu.
2. Click on a preset button. To have buttons visible in Router, **Preset | Show Buttons** must be checked. When the settings from a preset are applied, a green light located in the preset button is lit. This green light is on **ONLY** when all settings in Router are same as those stored in the preset.



3. By right clicking on the system tray icon when the Router is minimized.



The presets and the current router configuration are stored to the registry when Router is closed and recalled when Router is loaded.

**Save as** - Saves the current Router settings to a preset for future use.

**Rename** - Allows renaming of an existing preset.

**Delete** - Delete chosen preset.

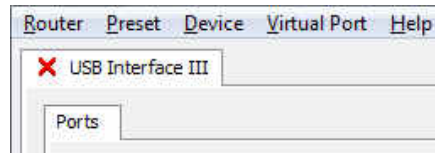
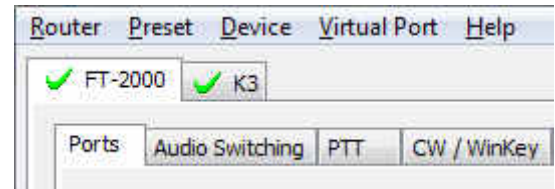
**Show buttons** - When checked, Router shows the preset buttons.

## DEVICE MENU

Router can control several devices. This allows configuring the settings for all connected devices at one time by using the Presets.

Each device has its own tab (page) in the main Router notebook. The content of a device tab depends on device type. Adding a device is automatic the first time Router detects a supported device (USB driver). Once detected, a device remains in Router even though device is disconnected. Each device is identified by product identification number and a unique serial string.

**Rename** – Creates a custom device name. This is useful if two or more devices are connected to the Router. For example CW KEYER, micro Keyer and USB Interface III can be renamed to more identifiable names as shown here..



**Delete** - Removes a device from the Router. Only disconnected devices with a **RED "X"** on device tab can be removed. To disconnect a device from Router, unplug the USB cable from the computer or device.

**Save Template** - will save the current Router settings to template file.

When clicked, Router will open a standard File Save dialog window – the default location is *C:\Documents and Settings\All Users\Application Data\microHAM\cfg*. If a hypertext (*html*) or plain text (*txt*) documentation file of the same name as the template is present in the same directory, it will be associated with the template.

**Load Template** – will automatically configure Router from a template (*\*.tpl* file).

When clicked, Router will open a standard File dialog – the default location is: *C:\Documents and Settings\All Users\Application Data\microHAM\cfg* - and the desired template can be chosen. When Router loads a template, it looks for an html or txt file with the same name as the template in the same directory. If such file is found, it is displayed.

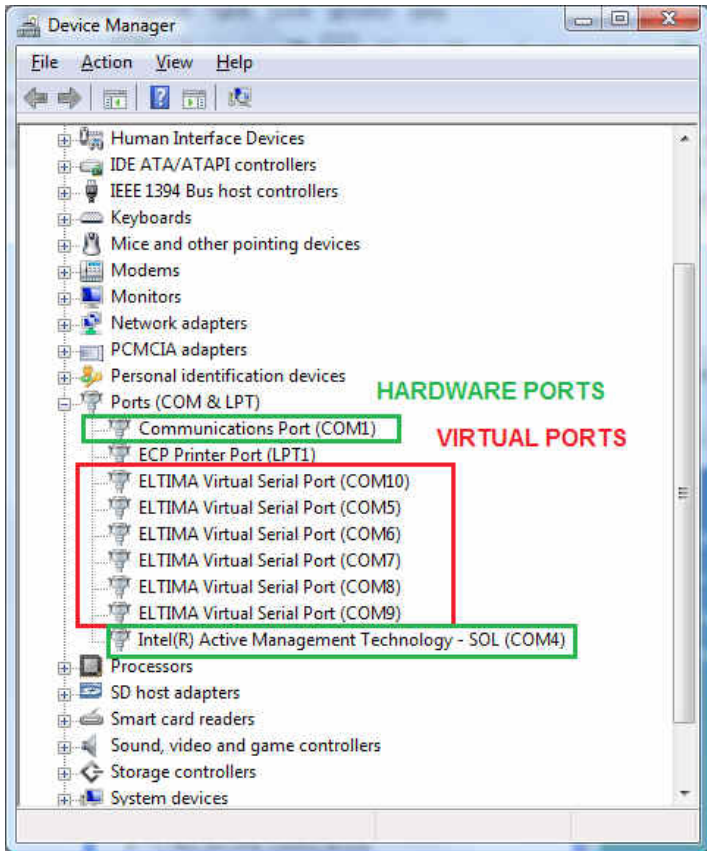


**TIP:** Templates are a powerful tool for quickly configuring Router to work with a particular application. Template files are interchangeable between computers and are well suited for cloning setups when using the same application in multi-computer stations or for sharing custom setups between users.

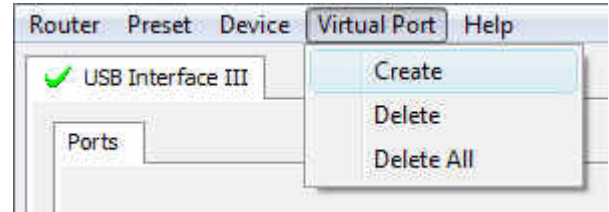
**Upload Firmware:** - **Does not apply to USB Interface III**

USB Interface III does not require any uploadable firmware.

## VIRTUAL PORT MENU



It is necessary to create several virtual serial ports (COM ports) in order for a Windows application (logging, control or digital mode program) to access microHAM devices.



**Create** - Creates virtual COM ports. It is possible to select several ports at one time by holding the *Ctrl* key on the keyboard and clicking on COM port numbers. Creating a virtual port may take a while, be patient.

**Delete** - Deletes any single virtual port.

**Delete All** - Deletes all previously created virtual ports and resets Virtual Serial Port bus.

Do not delete a virtual port unless all applications using that port have been closed.

**NOTE:** Properly working ports should not display an exclamation mark (!).

## HELP MENU

**Manuals:** Link to microHAM manuals located on your system.

**Setup Guides:** Link to software configuration guides for many common applications.

**Cable Schematics:** Link to cable diagrams.

**Download Documents:** Downloads microHAM documentation including updated manuals and setup guides. You may specify the products for which you want documentation.

**NOTE:** Requires an Internet connection.

**microHAM Home Page:** Link to [www.microHAM.com](http://www.microHAM.com)

**microHAM Downloads Page:** Link to [www.microham.com/contents/en-us/d29.html](http://www.microham.com/contents/en-us/d29.html)

**Show Tooltips:** When checked, small, single line help is displayed below the mouse cursor.

**Update Router:** Download and install the most recent version of Router.

**About:** Shows the Router's internal version number

**Change logs:** Shows the Router and firmware changes.

## PORTS TAB

Once the virtual ports have been created they must be associated with a specific device channel (e.g., Control, CW, PTT, etc.). These assignments should correspond to settings of the application software and must be configured first in Router then in the application (e.g., logging program, MMTTY, STREAM, etc.).

**Proper assignment of the virtual COM ports is vital for integration with loggers.  
Read the following information carefully.**

USB Interface III has four functions with indication of the state and settings applied by the host application

- **Radio Control** (uses RxD and TxD)
- **CW** (uses DTR)
- **PTT** (uses RTS)
- **Squelch** (uses CTS)

**General note:** Do not assign virtual ports for a function which is not used by your application. It is unnecessary and only consumes resources.

## RADIO PORT

The control channel is used by the host application to control transceiver frequency, mode, T/R switching and many other parameters. The application communicates with the radio using a serial protocol. Most modern radios implement some form of serial control but almost every radio implementation is different. The amount of radio control depends on the particular application and radio.



**TIP:** The COM port number assigned in Router **MUST** match the port number assigned in the host application. First configure the virtual COM ports in Router then configure the application.

**NOTE:** The USB Interface III does not use handshake on radio port. Configure DTR and RTS settings in your application program (logger) to OFF. **DO NOT** select "Handshake."



**TIP:** Disable **AUTOBAUD** in Icom transceivers. Set the radio, Router, and application software to operate at 9600 or 19200 baud.

When an application opens the COM port assigned for control (usually at start-up), Router shows the channel as **open** and displays baud rate, data bits, parity and number of stop bits used by the application. For example, 4800 8N2 means: 4800 baud, 8 bits data length, parity = none, and two stop bits.

Data flowing through the Control channel is indicated by two arrows. A green arrow indicates data flow from the host application to the radio and a red arrow indicates data flow from the radio to the application.

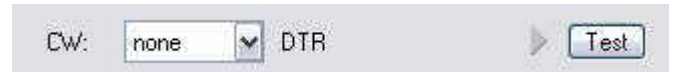


**The virtual COM port assigned for Control can be shared with CW and/or PTT but sharing must be specifically supported by the application. Many applications do not know how to share the radio port with other functions, use the control lines (RTS, CTS, DTR, DSR) for handshaking, or apply a fixed level.**

## CW PORT

By their very nature, USB ports are not well suited to transfer the real time events required for CW keying on virtual serial port control signals (DTR). In addition to the latency in USB, there are also latencies caused by computer CPU load, internal Windows message processing (inter-process communication) and data flow from other peripherals using the USB ports. This can result in transmitted characters being garbled. To minimize these unwanted operating system effects Router uses a specially developed oversampling and prediction algorithm to assure the smoothest possible transfer of control signal events over USB. By using these techniques, CW keying in the Router is in most cases usable up to 50 WPM if the application generates keying signals accurately and does not consume 100% of CPU time at the highest priority class.

Activity on the CW channel is indicated by red arrow. The red arrow will light in time with the transmitted CW characters when port is properly configured in the application.



To test operation of CW from the computer to the radio, click on **Test** button with no port assigned or the port closed. Activating the Test button will cause the CW output to close.

**NOTE:** The test button is NOT available when the CW port is open.

## PTT PORT

The PTT channel is used to switch the transceiver between transmit and receive. Router allows assigning a virtual serial port to the PTT channel.



Activity and the state of PTT channel is indicated by arrow. If port is opened, it does not mean that is properly configured for PTT keying. The arrow will light during the entire transmission when port is properly configured.

To test operation of the PTT from the computer to the radio, click on the **Test** button with no port assigned or the port closed. Activating the Test button will cause the radio to key if one is connected.

**NOTE:** The test button is NOT available when the PTT port is open.

## SQUELCH PORT

Even though most applications do not monitor the squelch and do not have the ability to perform specific functions based on its status, we have decided to include this feature in Router. Perhaps someday applications will be able to detect the squelch and use this information for automated functions like audio recording.

When a port is selected for Squelch, Router reports the Squelch status using the CTS signal.

## 6 - SETTING AUDIO LEVELS

There are two pots on the USB III front panel for adjusting audio levels.

The TX Pot adjusts the level of audio to the transmitter. The RX Pot provides adjustment of the audio from the radio to the sound card (computer).

**IMPORTANT:** Many transceivers, including all Yaesu transceivers, **MUST** be switched to special digital mode (DIG, PKT, DATA, USB-D/LSB-D etc.) to enable the rear panel line input!

Some tips from Geoff Anderson, G3NPA:

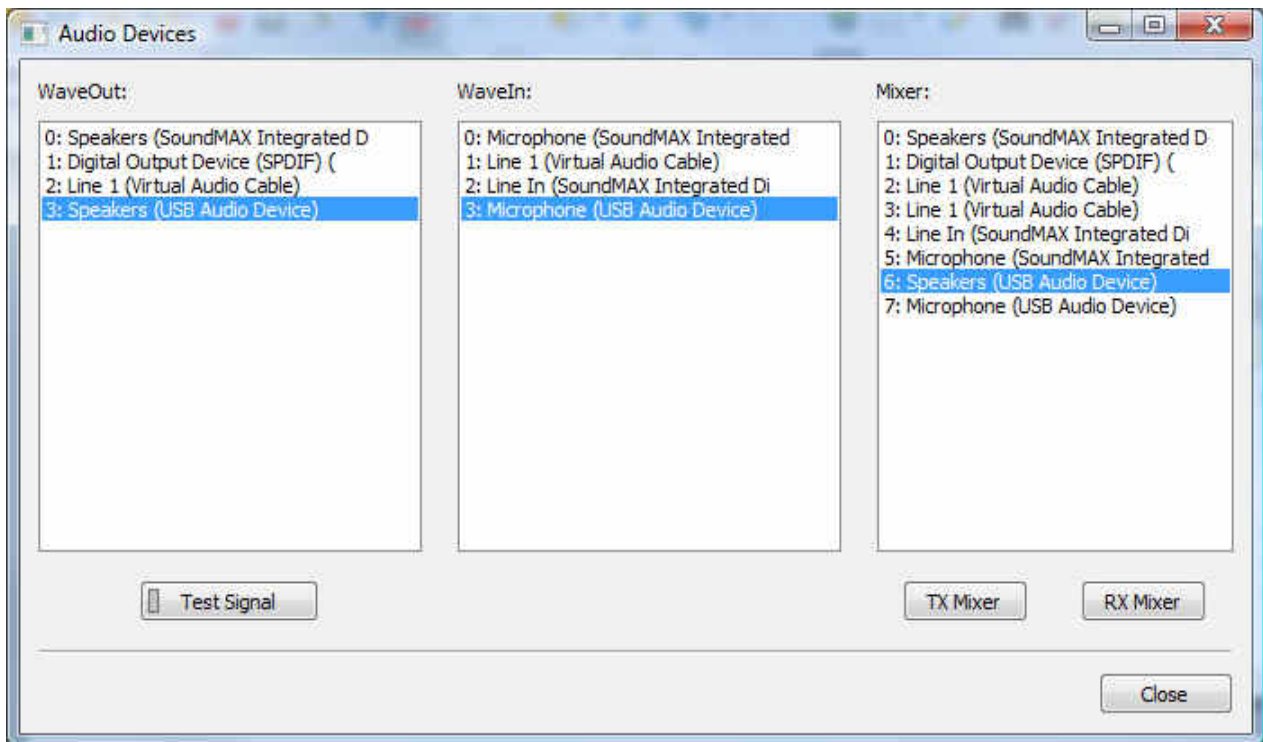


**TIP:** If you have achieved the correct settings for the transmit levels (with audio compression disabled), changing from a single tone to the PSK idle should make transmit power drop by at least 50% as observed on an RMS or average reading meter. This change in power is correct. If you do NOT see a 50% (or more) change, you are probably over driving the radio. Please note that some radios have inbuilt power meters which give a PEAK reading and therefore the change in level discussed above will not be observed.



**TIP:** Don't fall into the trap of thinking that because the transmit signal on the waterfall looks good that your actual signal is OK. All the waterfall is showing during transmit is the local audio and NOT the resultant transmitted signal.

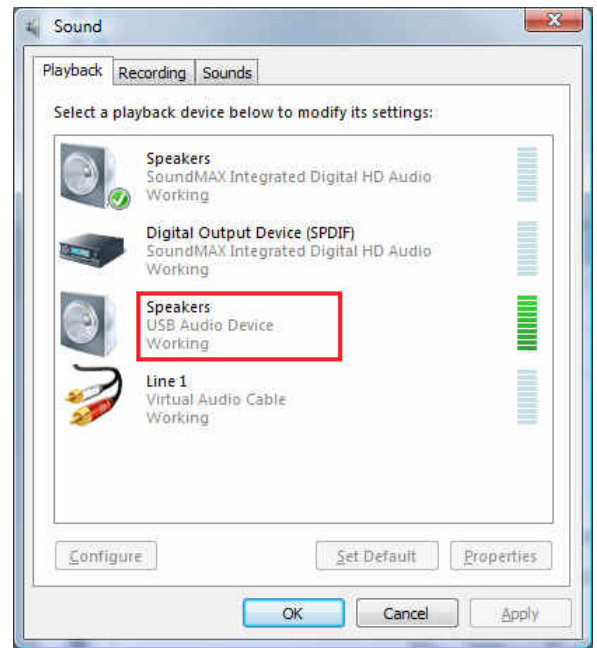
1. In Router click the "Sound Card" button.
2. On the "Audio Devices" window, select "Speakers (USB Audio Device)" in the Mixer and WaveOut boxes.



**NOTE:** You may need the WaveOut and WaveIn indexes of the sound card to configure some programs. Make note of them or remember where you can find the "Sound Card ID" numbers.

3. Click the TX Mixer button. If the Mixer does not appear, open the Windows Sound Control Panel and select the "Playback" tab.
4. Click the "Test Signal" button on the Audio Devices screen and verify that the VU Meter for connected sound card reaches maximum. If not, turn off Test Signal, restart Router and return to step 1. Turn off the Test Signal.
5. Select the "Playback" tab in the Sound Control Panel
  - double click "Speakers (USB Audio Device)"
  - click Levels tab and unmute the Speakers
  - click Balance and set LEFT to 80% and RIGHT to 100%

**NOTE:** to enable "pseudo-FSK" or CW audio keying on the right channel, the right channel level must be at 100%. Any value below 90% will disable the detector output. The "Speakers" level must be at maximum.



6. Switch your transceiver to AFSK mode (PKT, DIG or DATA for Yaesu, LSB-D or USB-D for current Icom transceivers, RTTY or RTTY-R on K2 and USB or LSB for Kenwood, TenTec and older Icom transceivers). Do not select RTTY or FSK; they do not use the audio input.

**IMPORTANT:** Many transceivers, including all Yaesu transceivers, MUST be switched to special digital mode (DIG, PKT, DATA, USB-D/LSB-D etc.) to enable the rear panel line input!

7. Click the "Test Signal" button and adjust the LEFT level for normal (rated) output on your transceiver while keeping the ALC meter as low as possible. Turn off the Test Signal.

**NOTE:** For the Elecraft K3 only: Do not adjust the LEFT slider. Instead, adjust the Line In level (Mic Gain) in the K3 until the ALC shows five (5) bars.

8. Select the "Recording" tab in the Sound Control Panel
  - double click on "Microphone (USB Audio Device)"
  - click Levels tab and unmute input
  - set level slider to 80% and click "OK"



## 7 - SYSTEM CONSIDERATIONS

**USB Interface III** can be used with a wide variety of software. The capabilities of those packages will have large influence on the level of computing power needed to utilize USB Interface III.

When used with Windows based contest logging applications like N1MM Logger Plus, Win-Test, and WriteLog or Windows based general logging applications like DXBase, DXLab Suite, DX4Win, Logger 32 and others, the microHAM control and interface application "*microHAM Router*" must run with the application. Since both the logging program and microHAM Router are real-time applications, system performance will be dependent on both CPU speed and the amount of available RAM.

While *microHAM Router* may run on slower computers, the minimum tested system is a 1.8 GHz Core2Duo processor, Windows 7, 1 GB RAM, CD-ROM, and USB 1.1 port. Whether Router can run as designed on slower machines with less memory and leave enough resources for application programs has not been determined. *microHAM Router* is not supported on any 16 bit version of Windows (95, 98, ME, SE).

In order to provide sufficient performance for simultaneous operation of microHAM Router, a logging application, Internet connectivity and other accessory programs, the recommended system is a 2 GHz or faster multi-core CPU with Windows 8.1 or later, 4 GB RAM, CD-ROM, root USB 2.0 port, and a transceiver with supported control protocol and logger, control, or digital mode software.

USB Interface III is also compatible with Apple Macintosh systems running OS 10.5 or later. It is supported by the native FTDI and Core Audio drivers shipped with the operating system. MacLoggerDX (<http://www.dogparksoftware.com/MacLoggerDX.html>) by Don Agro, VE3VRW and cocoaModem (<http://homepage.mac.com/chen/w7ay/cocoaModem/index.html>) by Kok Chen, W7AY are known to support *microHAM* interfaces.

USB Interface III is compatible with most current LINUX distributions. It is supported as standard USB Serial and USB Audio devices. USB Interface III contains circuits specifically designed to support features of FLDIGI (<http://www.w1hkj.com/FLdigi.html>) by Dave Freese, W1HKJ.

## 8 - PACKAGE CONTENTS

The product includes USB Interface III™, USB cable, and CD-ROM containing the microHAM USB Device Router program and documentation. If the shipment is incomplete, please contact us at the following address:

E-mail: [support@microham.com](mailto:support@microham.com)

fax : +421 2 4594 5100

by Post: **microHAM s.r.o.**  
**Nadrazna 36**  
**90028 Ivanka pri Dunaji**  
**SLOVAKIA**

## 9 - WARRANTY

microHAM warrants this product for three (3) years. The product must not be modified in any way or the warranty is voided. Cables are warranted against defects in materials and workmanship for a period of 60 days.

**What is covered:** During the warranty, *microHAM*, s.r.o., will repair or replace defective product at their sole discretion. You must send the unit postpaid with a copy of the original invoice to the distributor from whom you purchased the product. *microHAM* will pay return shipping.

**What is not covered:** This Limited Warranty does not cover (1) correction of installation or software errors in the user's computer(s), (2) damage caused by misuse, negligence, user modifications or failure to follow the user manual, (3) connection to improper or excessive voltage or voltage surges, (4) the incorrect installation of any cables connected to the device by the user or (5) weather related storm, lightning or electrostatic discharge damage.

**microHAM USB Device Router** (the software) is provided "as is" without guarantee of compatibility with any specific operating system, computer, peripheral or accessory.

microHAM assumes no liability or responsibility for damage to other devices or injuries to persons as a consequence of using our products.

If the terms of the above warranty are not acceptable, return the unit, all associated documents and accessories in the original unopened package, prepaid, to *microHAM* or to your supplier for refund less shipping and a restocking fee.

## 10 - SPECIFICATIONS

USB Interface III provides a basic USB to serial control interface and a USB sound card in a compact package.

USB Interface III is connected to the computer using the A-B USB.

The transceiver and USB Interface III are connected by single radio cable terminated on one side by a DB15M and on the other side by the appropriate plugs for the specific transceiver. The cable carries power for USB Interface III, audio, CAT control and keying. The appropriate transceiver interface cable is specified when USB Interface III is purchased.

If a Windows PC running the "*microHAM* USB Device Router" program is connected, USB Interface III works as a computer interface. It transfers all control signals generated by the application program between the computer and transceiver. Software compatibility is provided by using virtual serial ports. Router monitors these virtual ports and transfers any data or commands by USB to the micro controller in USB Interface III. USB Interface III processes this data and sends it to the physical ports of transceiver as CAT, CW, and PTT functions.

### Hardware Specifications

**USB:** USB 2.0 Full speed , USB 1.1 compatible

**Power consumption:** USB – less than 200mA; Transceiver – less than 100mA at 13.8V (max. 16V)

**Radio Port:** Rx/D, Tx/D – max. 57,600 Baud

Levels: Jumpers selectable TTL, inverted TTL, open collector bus, RS232

**CW:** open collector, max 30V/400mA

**FSK:** open collector, max 30V/400mA

**PTT:** open collector, max 30V/400mA

**Audio Out (left):** 1.3V p-p max.

**1 dB bandwidth:** 0.3 - 3KHz typical

**Second harmonic:** -80 dB typical

**Third harmonic:** -70 dB typical

**D/A Sampling rates:** 32000, 44100, 48000 Hz.

**Audio Out (right):** internal P-FSK/QSK detector, output drives CW and FSK lines

**Audio In:** 50K Ohm, max 4Vpp

**1dB bandwidth:** 0.3 - 3KHz typical

**Absolute noise floor:** -90 dBm @600 Ohms typical

**Dynamic Range:** 87 dB typical

**A/D sampling rates:** 8000, 11025, 16000, 22050, 32000, 44100, 48000 Hz.

**Dimensions:** **W** 103mm (4 1/8") x **H** 28 mm (1 1/8") x **D** 101 mm (4")

**Weight:** 1100g (2.4 lbs.)

## DECLARATION OF CONFORMITY



### Federal Communications Commission Statement (USA)

This device complies with Part 15 of the FCC Rules. Operation is subject to the following two conditions: (1) this device may not cause harmful interference, and (2) this device must accept any interference received, including interference that may cause undesired operation.



### European Union Declaration of Conformity

*microHAM*, s.r.o. declares that the products:

**Product Name: USB Interface III**

**Conforms to the following Product Specifications:**

**EN 55022: 1998 Class B following the provisions of the Electromagnetic**

**Compatibility Directive 89/336/EEC**

## APPENDIX A – DB15 RADIO CONNECTOR

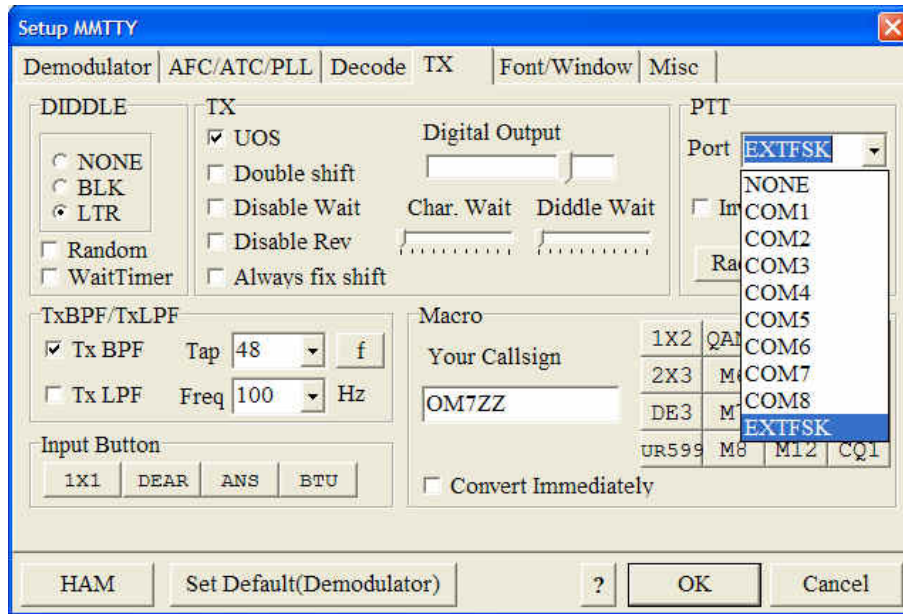
Pin #	Label	Description
1	Power +13.5V	12 - 16V DC input
9	CAT IN	Control port input
2	CAT OUT	Control port output
10	SQL1	Level squelch input
3	SQL2	Impedance squelch input
11	PTT	PTT output "open collector"
4	CW	CW output "open collector"
12	N/A	Not connected
5	FSK	FSK output "open collector"
13	AUDIO OUT S	Radio AUDIO input signal
6	AUDIO OUT GND	Radio AUDIO input ground
14	AUDIO IN MAIN S	Radio AUDIO output signal main receiver
7	AUDIO IN MAIN G	Radio AUDIO output ground
15	N/A	Not connected
8	N/A	Not connected
SHELL	GND	Radio and power GND

## APPENDIX C – FSK with MMTTY

The USB III does not support FSK in the traditional way. However the unit can be used for FSK with the proper software.

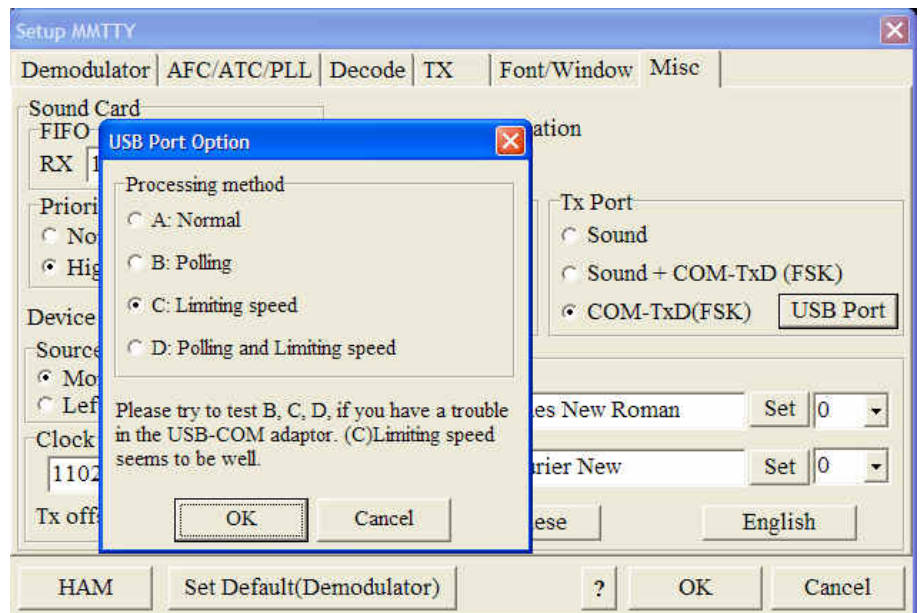
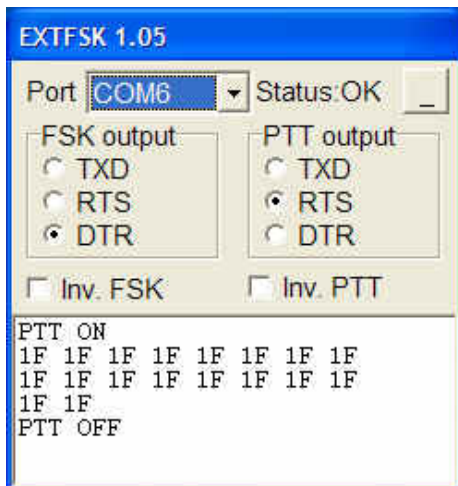
Each radio specific cable set includes FSK connections which are shared with the CW output.

USB III supports FSK from the RTTY program "MMTTY" when the special MMTTY EXTFSK utility is used.



The EXTFSK.DLL file must be copied into the same directory in which MMTTY.exe is located and MMTTY must be configured to use EXTFSK for PTT and FSK.

One of the FSK options must be selected in Tx Port on the "Misc" tab and "Method C" must be selected from the "USB Port" button.



To use EXTFSK, the same port must be selected for PTT and CW in the USB Device Router and that port specified in the EXT FSK window. FSK must be defined as DTR and PTT must be defined as RTS. (Note: COM6 is selected in this example. However, the actual port will depend on the virtual port assigned for CW and PTT in Router).

If the transmit signal is reversed, its polarity can be changed by clicking the "Inv FSK" check box.

## APPENDIX D – RFI Considerations

A few guidelines to eliminate problems caused by RFI:

1. Proper grounding of all electronic equipment is critical. A modern station contains many, diverse, types of interconnected and interrelated equipment: transceiver, power amplifier, computer, control boxes, switch boxes, and power supplies. Each of these must be individually grounded with a separate connection to a single common ground point, thus forming a star ground connection.

Proper grounding of computers, both "desktop" and laptop is often overlooked. A separate ground connection should be run from the computer to the station common ground point. The best place to ground a computer is a screw with a good connection to the case. On a laptop, this is often the retaining screw on a D-sub connector (e.g, VGA output); on a "desktop" it is often the screws holding the power supply.

It is absolutely important to prevent ground currents from flowing to the common ground point by way of the signal cable. If you use a microHAM "keyer," a good test is to remove the DB15/DB37 connector and USB cable from the keyer and measure the resistance from the shell of the DB15/DB37 to the shell of the USB cable. There should be NO MORE than FIVE (5) Ohms (and preferably less than TWO Ohms) between them.

Note: many PC manufacturers fail to provide an adequate connection between the shell of the USB connector and the PC case. If this is the case, a connection can be established by bridging a folded piece of aluminum foil between the shell of the USB connector and the PC case.

2. Power all your equipment from a single wall outlet. The "safety ground" often exhibits excessive noise between power outlets - sometimes often due to other equipment powered from the same branch circuit. It is always better to avoid this source of noise/interference. It is also a good idea to check the power distribution for loose connections, reversed neutral/ground, open ground and other wiring problems.
3. Sometimes, the USB cable can be a source of RF interference - the cable might have inadequate shielding or the transceivers in PC might be improperly designed causing data flowing inside the cable to be reflected as a common mode current on the shield of the cable. This common mode current can radiate a significant "digital noise." If this is the source of your problems, it can be significantly reduced or eliminated using ferrite chokes on both ends of the cable. Two or three turns through a #31 mix FT240 toroid are better than the common snap-on ferrites of unknown mix.
4. Often, another cause of RFI problems is a common mode current flowing along the antenna feedline into the shack. It is a common misconception that the only thing required of a feedline is that it have low SWR. Unfortunately, a low SWR does not guarantee low common mode current. These common mode currents are conducted into the shack where they can radiate from the feedline, induce currents in any nearby metal object, and/or be conducted into the interconnected equipment. Common mode currents on a feedline are indicated by problems that differ in intensity from one band to another or from one end of the band to another, by problems that change when a feedline is moved or its length changed, where the problem moves from one piece of equipment to another based on band, and/or where the severity changes with transmit power level. The solution is to use common mode chokes to prevent the current from entering the shack. This topic has been given thorough treatment in recent works by W1HIS and K9YC.

W1HIS: <http://www.yccc.org/Articles/W1HIS/CommonModeChokesW1HIS2006Apr06.pdf>

K9YC: <http://www.audiosystemsgroup.com/RFI-Ham.pdf>

## APPENDIX D – Cables and Bridges

Cables and Bridges are an experimental capability – *microHAM* provides no support or warranty for the Cables and Bridges capability. These features are undocumented but relatively self-explanatory.

Cables (cross wired, aka “null modem” cable) create interconnected virtual ports which can be configured as a bus, point to point pair like com0com, or point to multi-point (star, splitter or combiner) - like VSPE. Applications may connect to each other using cables. For example, the Secondary CAT Serial Port in DXLab Suite's Commander may connect to one end of a cable and a software panadapter might connect to the other end of the cable. There is one exception, cables ***can not*** connect to any port used in Router's Ports tab.

The TX check box designates the port as a bidirectional port – the TxD line is active/connected. If the TX box is unchecked, the port is a “receive only” (listen) port like the “listen” leg of the “Y” cable used between a computer serial port and transceiver for devices like a SteppIR controller, “AT-Auto” tuner or some automatic power amplifiers.

Bridges (straight “extender” cable) allow connecting any two (existing) ports - serial port to serial port, serial port to virtual port (cable), or virtual port (cable) to virtual port (cable) but again Bridges ***can not*** connect to any port used in Router's Ports tab.

The only purpose of cables and bridges is to replace third party software serial splitters or software null modem connections like Com0com, DDutil, LP-Bridge, VSPE, etc. that may conflict with the Eltima VSPAX drivers used by *microHAM* USB Device Router. In this regard, *microHAM* USB Device Router provides a means to enable and configure the capabilities that exist in the Eltima VSPAX product.

