

DigiKeyer II and Logger32 Setup

Router setup:

Note: The absolute port numbers do not matter. The key is consistency - the same port number must be used for a specific function every time it is used.

1. Assign the radio control virtual COM ports. Click the **Set** button and select your radio from the drop down box. Uncheck the **Disable router queries** box.
2. Assign a port for WinKey.
3. Assign a port for FSK – check the PTT box.
4. Assign the same port for PTT as you assigned for Radio control.

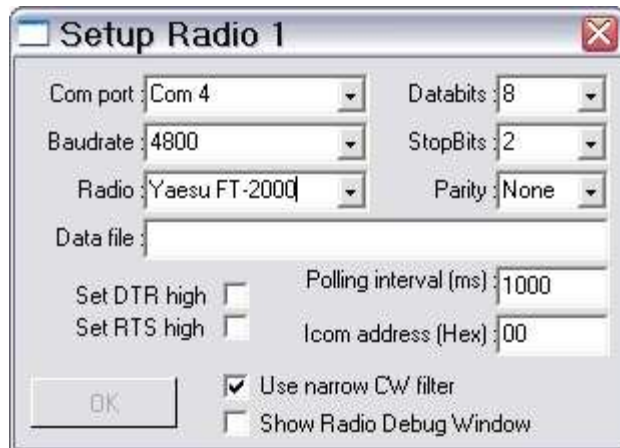
Ports | Audio | PTT | CW / WinKey | CW Messages | FSK Messages | Keyboard | System Settings

RADIO Icom IC-706 MkII-G
14.087.500 RTTY

CAT:	COM4		closed	Set
2nd CAT:	none			
FSK:	COM6	<input checked="" type="checkbox"/> PTT	closed	Test
2nd FSK:	none	<input checked="" type="checkbox"/> PTT		<input type="checkbox"/> invert <input type="checkbox"/> strict bps
CW:	none	DTR		Test
PTT:	COM4	RTS	closed	Test
2nd PTT:	none	RTS	closed	
Foot Switch:	none	CTS		<input type="checkbox"/> invert
SQL:	none	CTS		<input type="checkbox"/> invert
WinKey:	COM3		closed	Test Mon
Control:	none			Mon

5. On the **PTT** tab, check PA PTT if DigiKeyer II will be controlling an amplifier.
6. Save settings to a preset by selecting menu **Preset | Save as**. Choose a position and name it Logger32.

Logger32 setup:

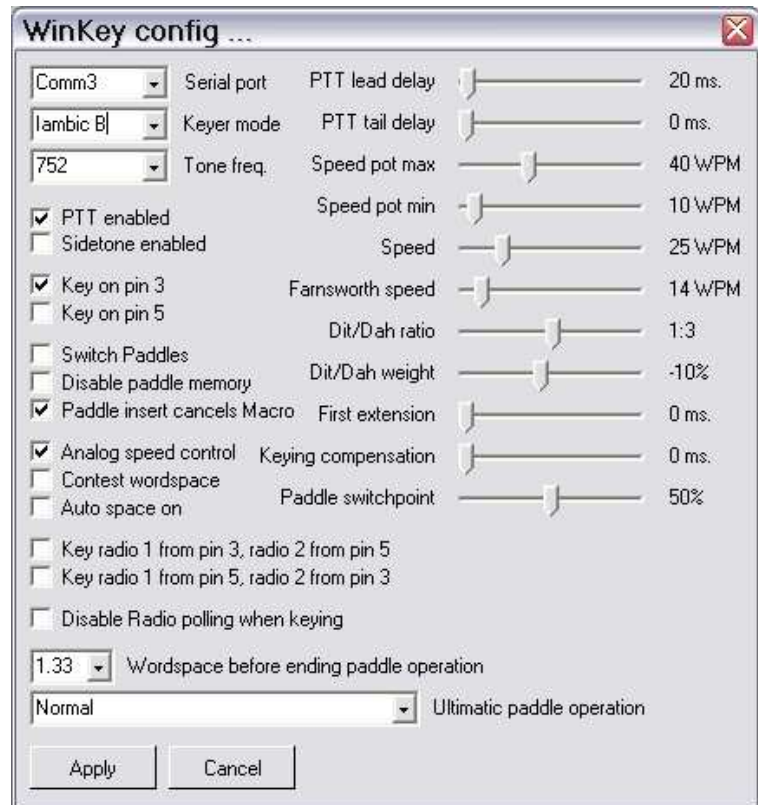


1. Click **Setup | Radio | Radio 1 configuration ...**
2. Select the virtual COM port you used for control in Router's Ports tab
3. Select the Baud Rate, Parity, Databits, parity, Word Length, and Stop Bits settings required by your radio.
4. Uncheck "Set DTR high" and "set RTS high"

5. Click the CW icon to open the CW machine
6. Select **Config | WinKey**
7. Select **Config | Keyer Setup**
8. Select the Serial Port you set for WinKey in Router's Ports tab
9. Configure the settings you prefer for CW operation including weight, speed range for WinKey's speed pot, PTT or QSK operation, etc.

It is generally most convenient to make the CW parameters the same as you have set on Router's CW/WinKey tab.

10. Click on the Speaker icon to open the Soundcard Data Window

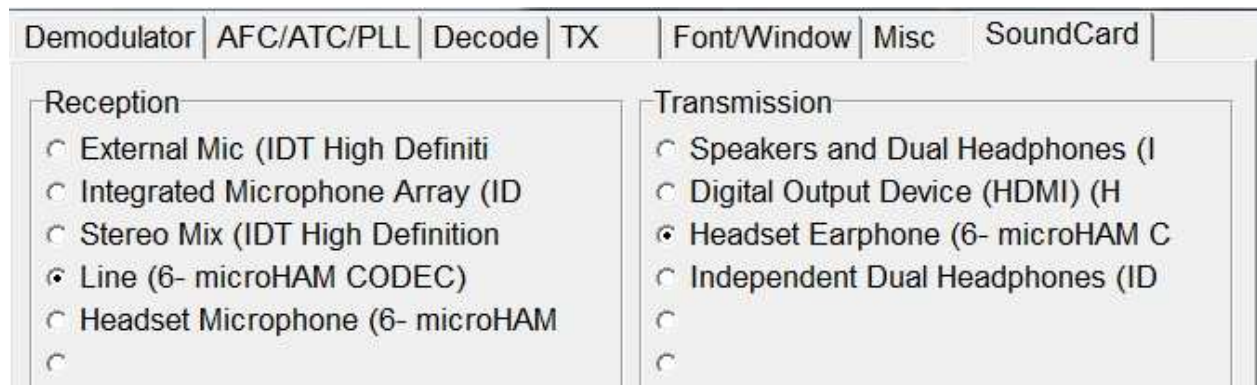


11. Click **Settings | Radio PTT options**
12. Select the Serial Port you chose for FSK on Router's Ports tab
13. Select RTS Keying only
14. Select PTT by Serial Port
15. **DO NOT Check "MMTTY FSK on USB Port"!**

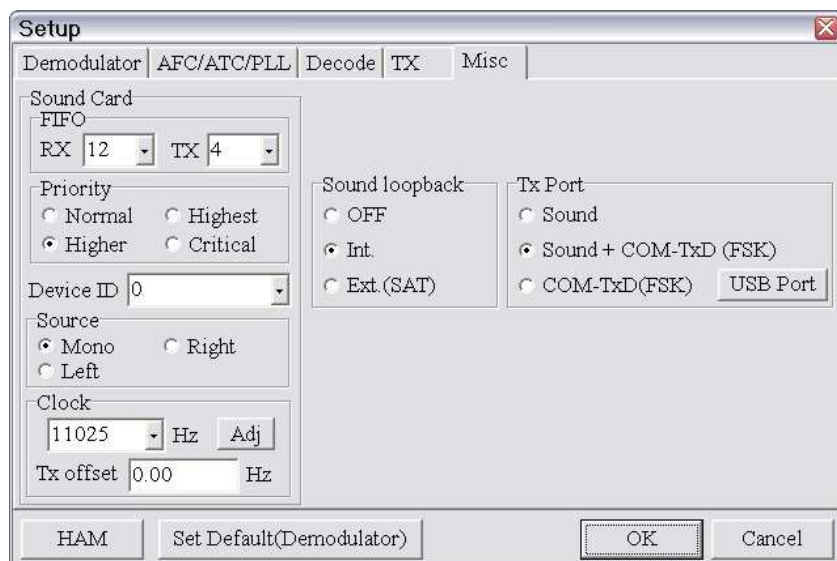
16. Click on Mode | MMTTY Engine | Standard RTTY (170Hz)

17. Click on the Wrench icon to Open MMTTY Setup

18. Select the SoundCard tab



19. Set Reception to Line (microHAM CODEC) and set Transmission to "Headset Earphone (microHAM CODEC)."



20. Choose the **Misc Tab**.

21. Select Source **Left**

22. Set Clock **11025**

23. Select COM-TxD (FSK) for the TX Port.

If you want the option to switch between AFSK and FSK, select Sound + COM-TxD (FSK)

24. Click **USB port** button and choose **C: Limiting speed**

