

MK2R/MK2R+ and Win-Test setup

"USB Only" SO2R

Router setup:

Note: The specific port numbers are not important. The key is consistency - the same port number must be used for a specific function in both Router and Win-Test.

1. Assign virtual COM ports for control of both radios. Click the Set button for each radio and select the radio on that port from the drop down box. Uncheck Disable router queries box.
2. Assign ports for FSK and check the PTT box.
3. Assign a port for WinKey. Select the appropriate PTT output and QSK or PTT operation for each radio on Router's PTT tab.
4. Select the audio switching for EACH radio on the **Audio Switching** tab.
ACmA or CmCmA is recommended for **Voice** Modes.
5. Assign a port for for Control. Win-Test will use this for control of MK2R or MK2R+.

The screenshot shows the Router software interface with the following configuration:

- Ports Tab:** Active
- RADIO 1 (Elecraft K3 (patched)):**
 - CAT: COM4 (Set)
 - 2nd CAT: none
 - FSK: COM6 (PTT checked, closed) (Test)
 - 2nd FSK: none (PTT checked) (invert, strict bps)
 - CW: none (DTR)
 - PTT: COM4 (RTS, open) (Test)
 - 2nd PTT: none (RTS)
 - Foot Switch: none (CTS, invert)
- RADIO 2 (Icom IC-706 MkII-G):**
 - CAT: COM5 (Set)
 - 2nd CAT: none
 - FSK: COM7 (PTT checked) (Test)
 - 2nd FSK: none (PTT checked) (invert, strict bps)
 - CW: none (DTR)
 - PTT: COM5 (RTS, open) (Test)
 - 2nd PTT: none (RTS)
 - Foot Switch: none (CTS, invert)
- WinKeyer2:** COM3 (open 1200 8N2) (Test) (Mon)
- Control:** COM8 (open 9600 8N2) (Mon)
- Options:**
 - Use LPT for CW
 - Use LPT for PTT
 - Generate FS on LPT
 - Steer serial CW/PTT
 - Steer FSK
 - Steer WinKey CW/PTT

6. Select "microHAM Control Protocol on COM port" on the **SO2R** tab.

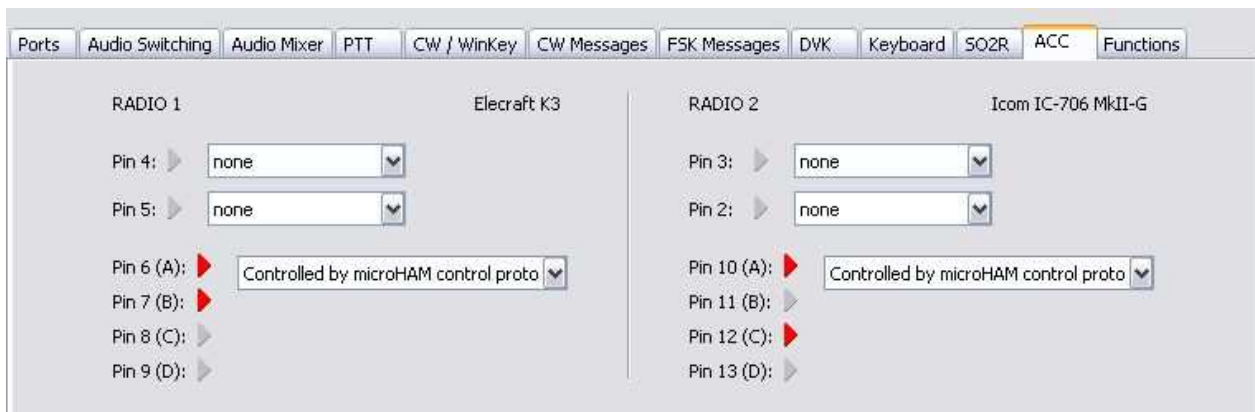
This setting permits Win-Test to control:

- **Transmit Focus**
- **Receive Focus**
- **Stereo/Split Headphones**
- **Headphones Reverse**
- **Antenna Relay**



7. Antenna Relay is enabled on the Accessory tab. MK2R and MK2R+ provide a four bit (binary) signal to drive a user supplied 1 of 16 decoder for each radio.

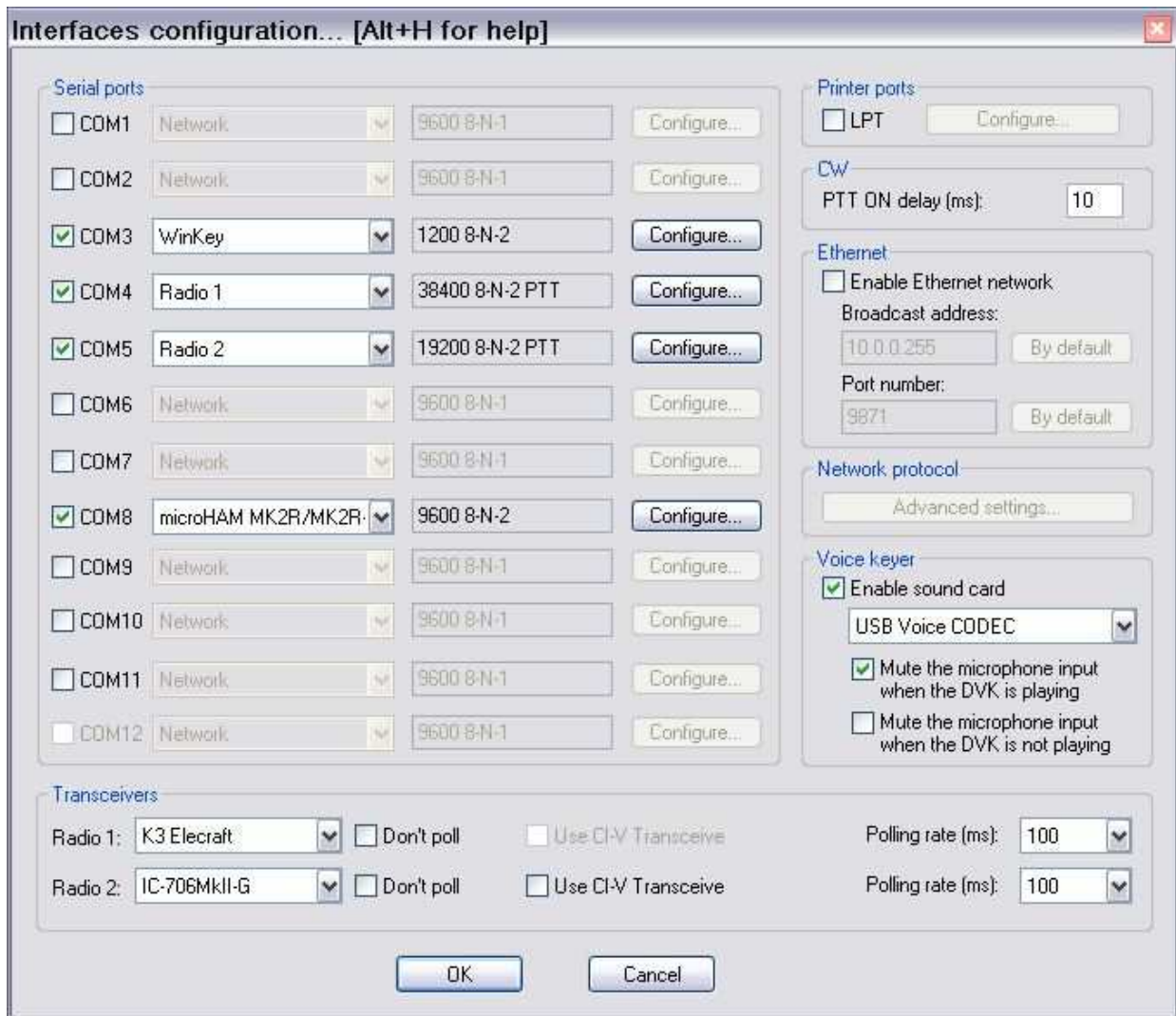
Set pins 6-9 and 10-13 to "Controlled by microHAM control protocol" to allow Win-Test to control the ACC port outputs for antenna switching.



8. Save the settings to a preset by selecting menu **Preset | Save as**. Choose a position and name it Win-Test.

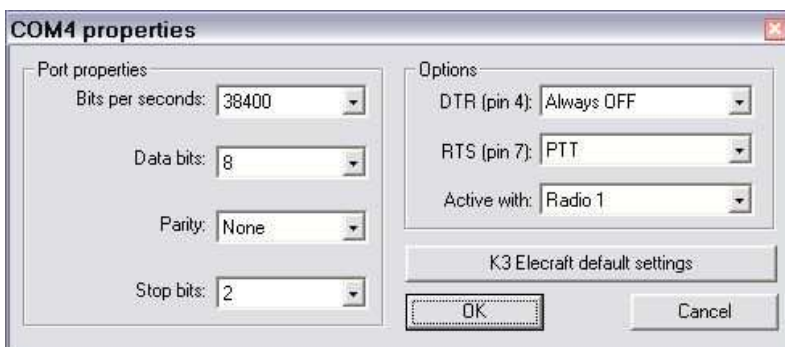
Win-Test setup:

1. Click **Options | Configure Interfaces**



2. Check "Enable sound card" and set the sound card to USB Voice CODEC.

3. Check "Mute microphone input when DVK is playing"

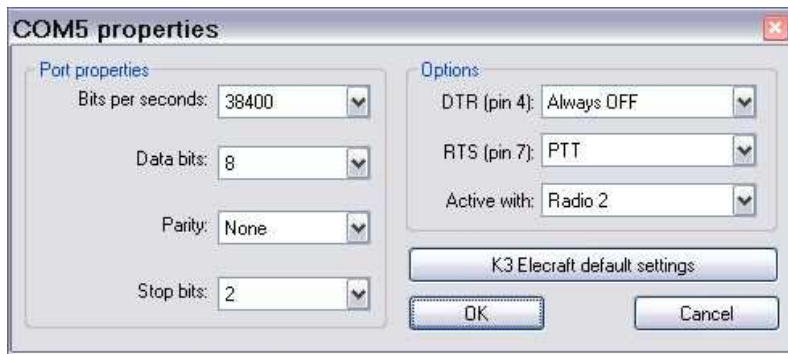


4. Check the port you chose for Radio 1 CAT and set the interface to Radio 1.

5. Click "Configure" and set the port properties for your transceiver.

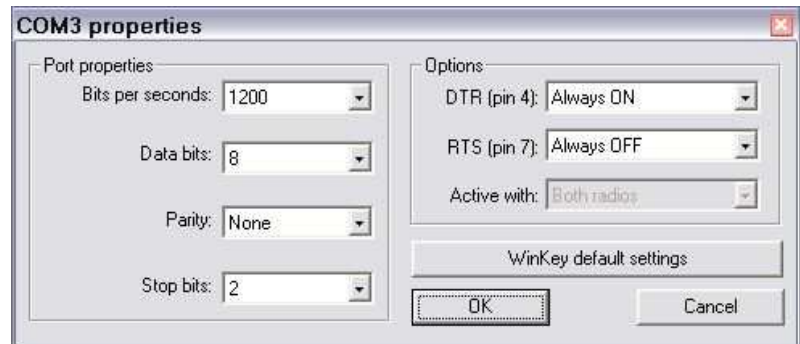
6. Set DTR to Always Off, and RTS to PTT.

7. Set Active with: Radio 1



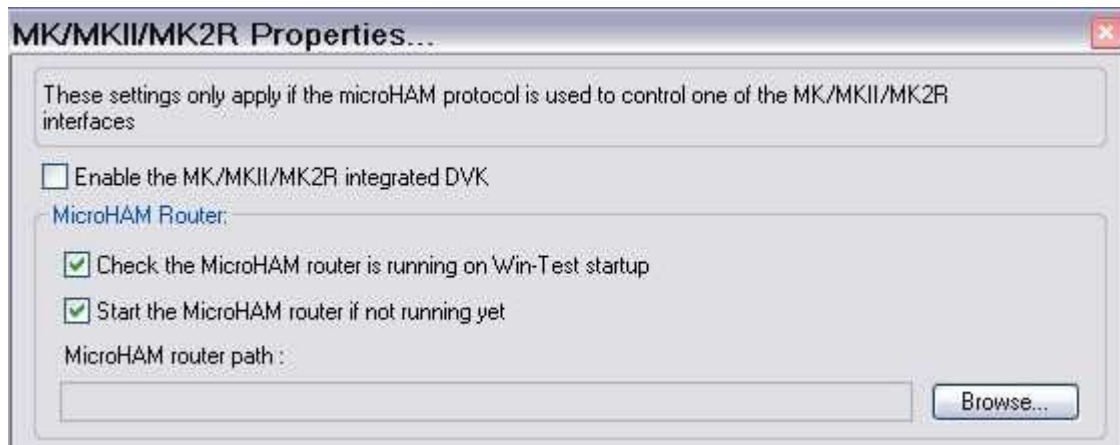
8. Check the port you chose for Radio 2 CAT and set the interface to Radio 2.
9. Click "Configure" and set the port properties for your transceiver.
10. Set DTR to Always Off, and RTS to PTT.
11. Set Active with: Radio 2

12. Check the port you set for WinKey and set the interface to WinKey
13. Click "configure" and set the port properties to 1200, 8N2.
14. Set Options to: DTR= Always On and RTS = Always Off



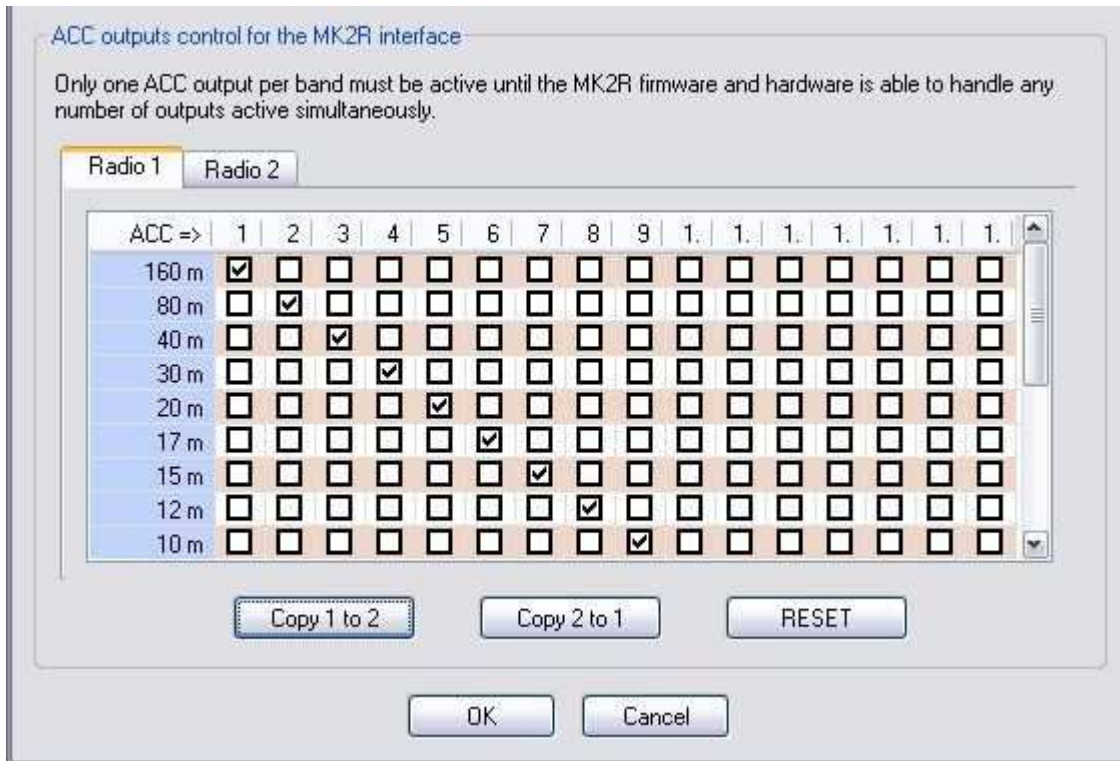
15. Check the port you set for Control and set the interface to microHAM MK2R/MK2R+.
16. Click "configure" and set the port properties to 9600, 8N2.
17. Set options to: DTR = Always Off and RTS = Always Off.

18. Click **Options | MK/MK2/MK2R configuration**



19. Check **Enable the MK/MKII/MK2R integrated DVK** if you plan to use the Router DVK.
20. Check the boxes for microHAM Router if you want Win-Test to start Router if it is not running when Win-Test starts.

21. If you plan to use the ACC port to control a band decoder for bandpass filters and/or antenna switch, set-up the band map or antenna map for Radio 1 and/or Radio 2.

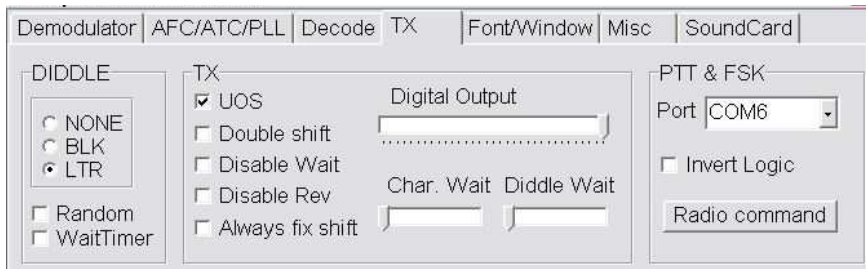


RTTY/Digital setup:

RTTY operation with microKEYER II and Win-Test requires the use of MMTTY.

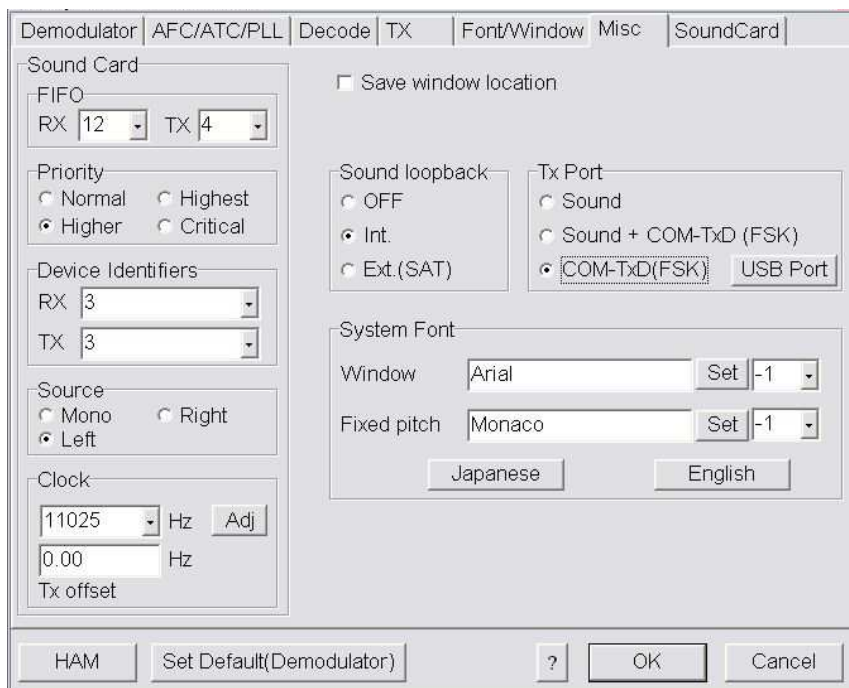


1. Install MMTTY in two separate directories on your computer.
2. Select **Options | RTTY Configuration**
3. Check "Run MMTTY"
4. Enter the path to to each instance MMTTY
5. Make any other selections based on your operating preferences.
6. Start/open MMTTY from the path specified for Radio 1.
7. Select **Option (O) | Setup (O)** on the MMTTY Spectrum/waterfall window.
8. Select the TX tab



9. Set "PTT & FSK" to the port you selected for Radio FSK in Router

10. Select the SoundCard tab and set Transmission and Reception to use "USB Audio CODEC"



11. Select the Misc tab.

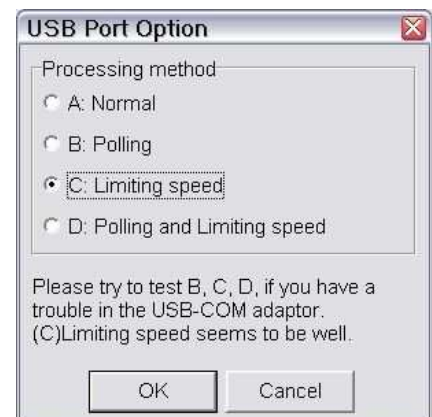
12. Select **Source = Left**

13. Select clock **11025**

14. Set Tx Port to COM-TxD(FSK)

15. Click the **USB Port** button

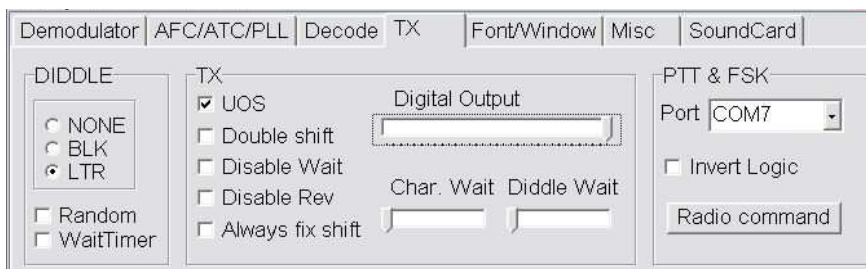
16. choose **C: Limiting speed** and click OK



17. Start/open MMTTY from the path specified for Radio 2.

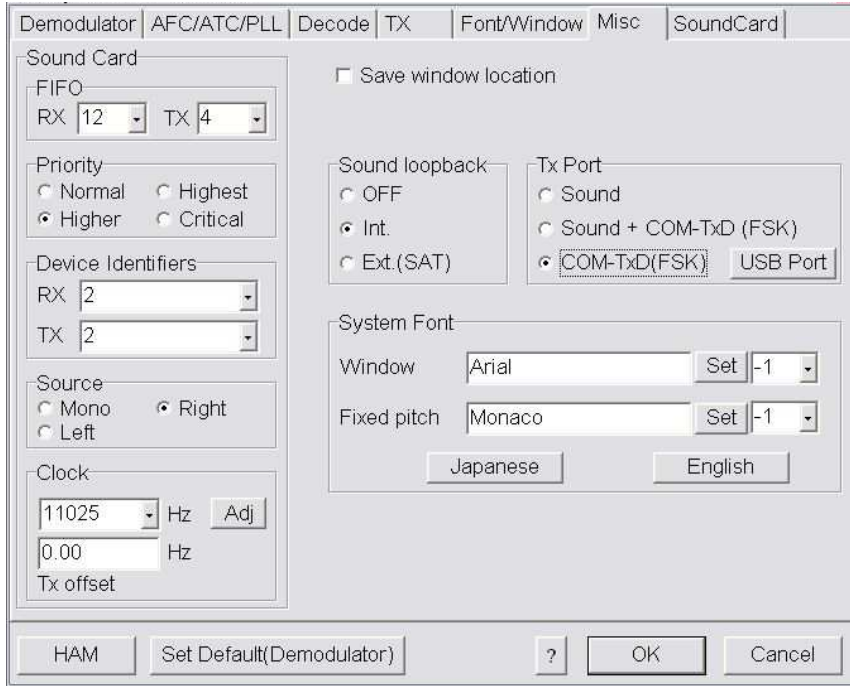
18. Select **Option (O) | Setup (O)** on the MMTTY Spectrum/waterfall window.

19. Select the TX tab.



20. Set "PTT & FSK" to the port you selected for Radio 2 FSK in Router

21. Select the SoundCard tab and set Transmission and Reception to use "USB Audio CODEC"



22. Select the **Misc** tab.

23. Select **Source = Right**

24. Select clock **11025**

25. Set Tx Port to COM-TxD(FSK)

26. Click the **USB Port** button



27. choose **C: Limiting speed** and click OK