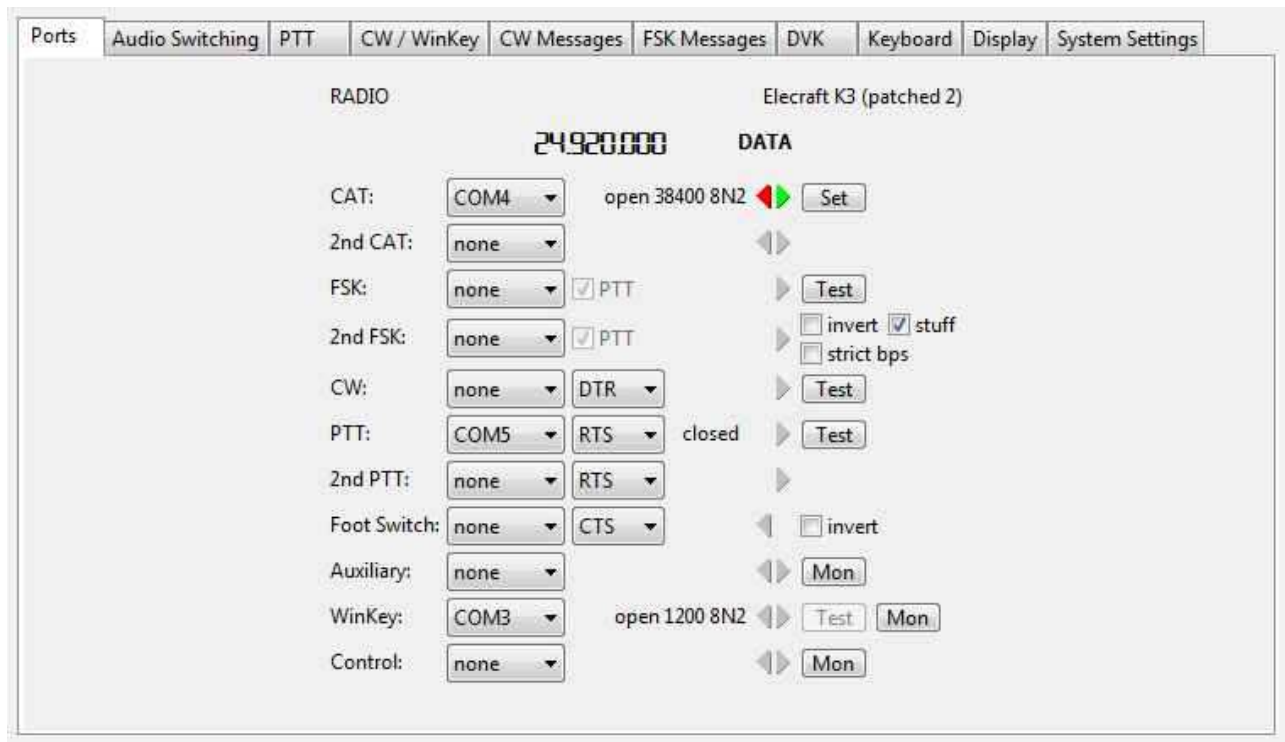


microKEYER II with fldigi

Router setup:

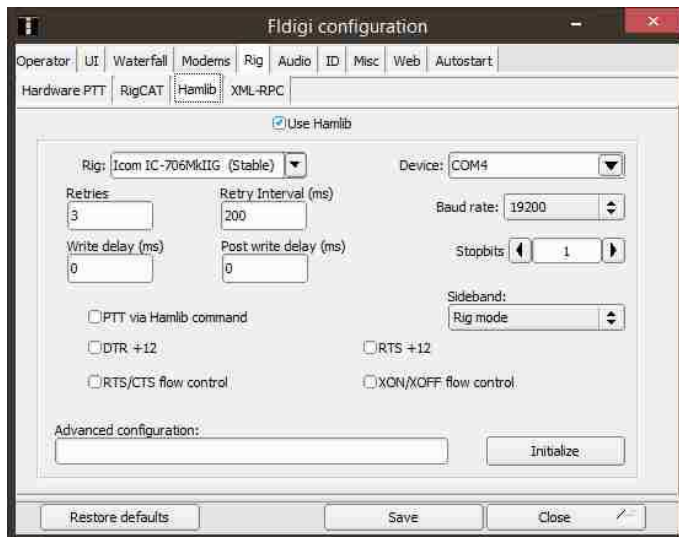
Note: The absolute port numbers do not matter. The key is consistency - the same port number must be used for a specific function every time it is used.

1. Assign a virtual port for radio control.
2. Assign PTT to a different port than you used for radio control in fldigi.
3. FLdigi does not support computer generated CW, WinKey or FSK. However, you may wish to set a port for WinKey if you also use flwinkey.



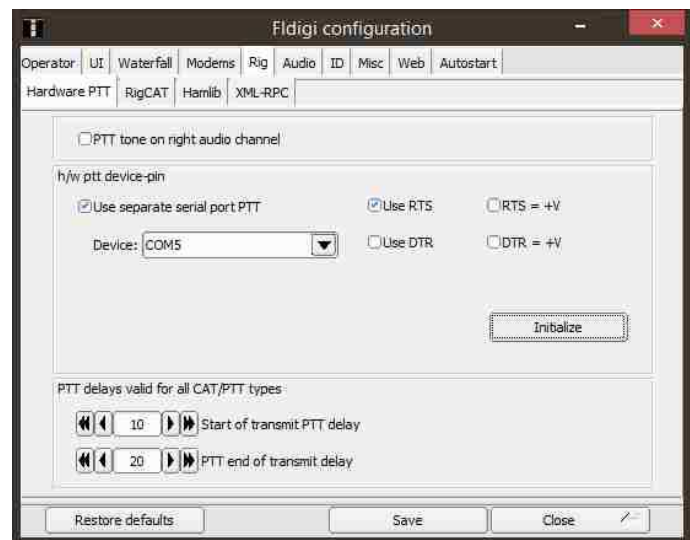
4. On the **Audio Switching** tab, make sure FSK/DIGITAL is set to "Line Input (rear)."
5. On the **PTT** tab, select **PTT1** for VOICE, **PTT1 or QSK** for CW, and **PTT2** for FSK/DIGITAL.
6. **UNCHECK** "Sound card PTT" on the PTT tab.
7. Save the settings to a preset by selecting **Preset | Save as**. Choose a position and name it FLdigi.

FLdigi setup:



1. Click **Configure | Rig Control ...**
2. Select the Hamlib tab
3. Select your rig
4. Set Device to the port you selected for CAT in Router and set the data rate as needed for your rig.
5. **Uncheck** check "PTT via Hamlib command"
6. Click Initialize

7. Select Hardware PTT
8. Check "Use Separate serial port PTT"
9. Set Device to the port you selected for PTT in Router
10. Check "Use RTS"
11. Set PTT delays appropriate for your transceiver and amplifier if used. 10 ms at the start and 20 ms at the end are suitable for most transceivers without an amplifier.
12. Click Initialize and Close



13. Click **Configure | Sound Card ...**
14. Select "PortAudio"
15. Set Capture (Audio Input) to Line (microHAM CODEC)
16. Set Playback (Audio Output) to Headset Earphone (microHAM CODEC).
17. Click Save and Close.

