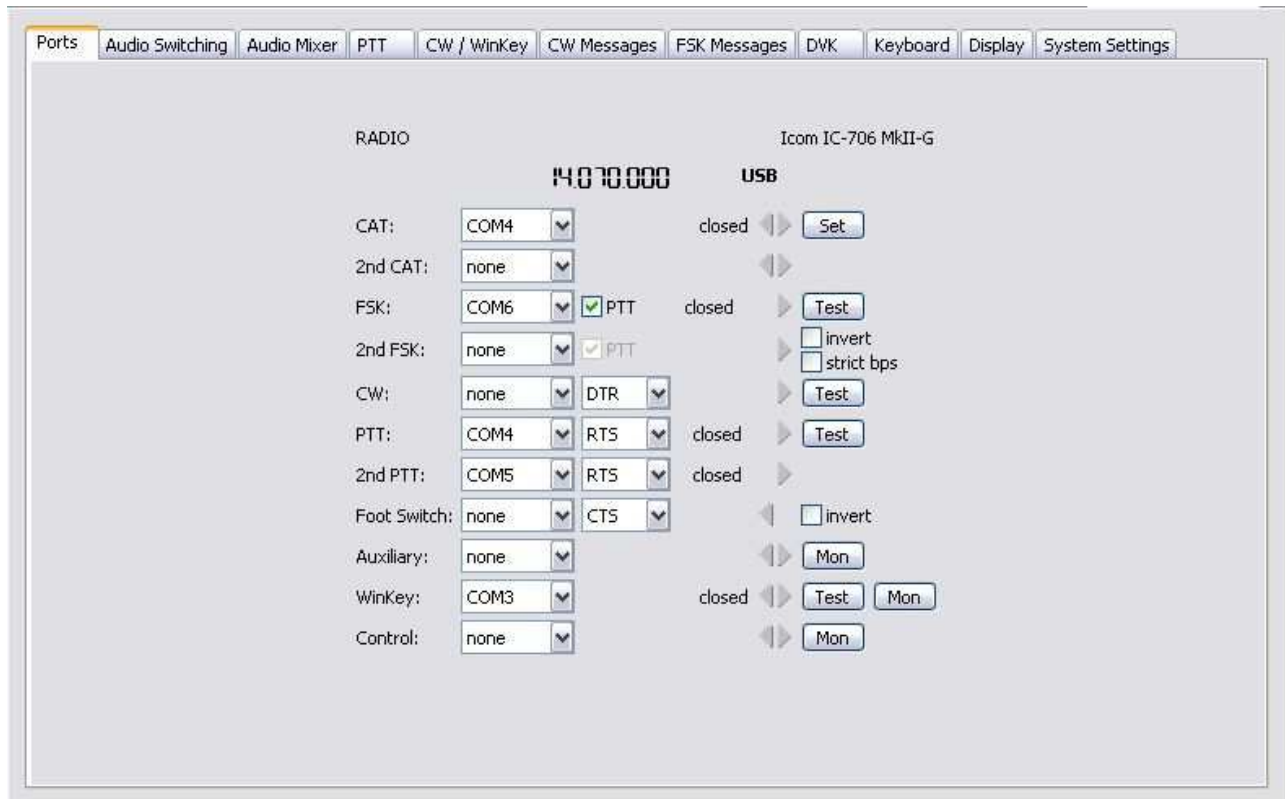


# microKeyer II and MMSSTV Setup

## Router setup:

Note: The absolute port numbers do not matter. The key is consistency - the same port number must be used for a specific function every time it is used.

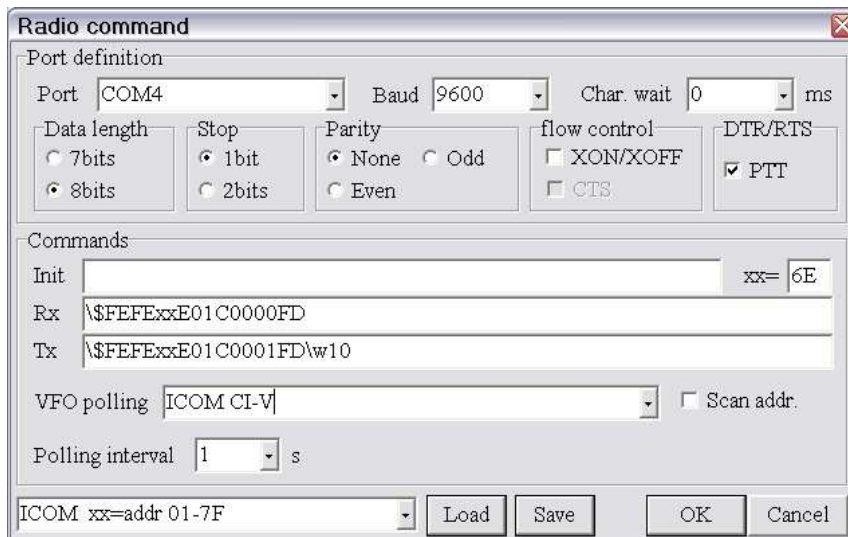
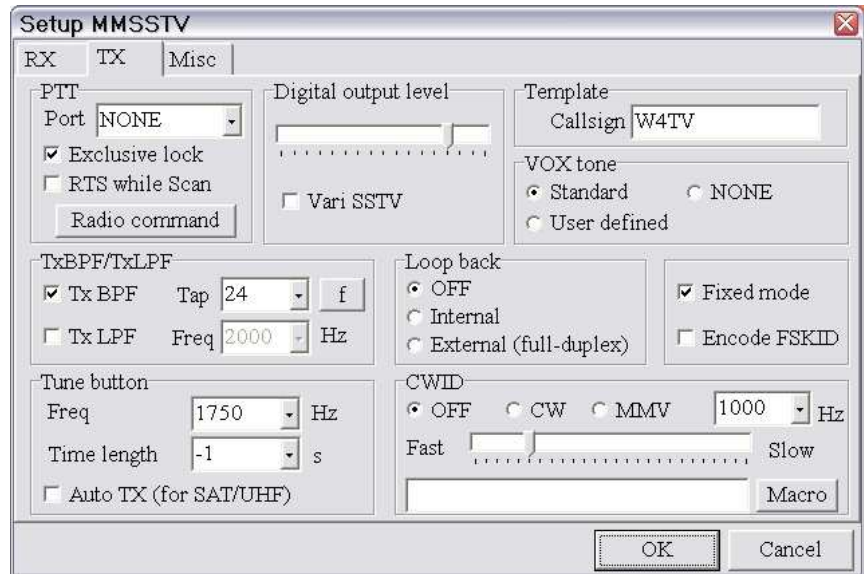
1. Assign the radio control virtual COM ports. Click the **Set** button select your radio on the drop down box. Uncheck the **Disable router queries** box.
2. Assign the same port for PTT.



3. On the Audio Switching tab, set VOICE to "Microphone Jack, DVK control" and set FSK/DIGITAL to "Line Input (rear)."
4. On the **PTT** tab, use **PTT1** for VOICE, **PTT1 or QSK** for CW and **PTT2** for FSK/DIGITAL.
5. Save settings to a preset by selecting menu **Preset | Save as**. Choose a position and name it MMSSTV.

## MMSSTV setup:

1. Click **Option | Setup MMSSTV** and select the **TX tab** ...
2. Set the PTT Port to NONE. You will set the Radio Control and PTT Port on the next screen.



3. Click on the **Radio command** button.
4. Set the port to the same port you chose for Control on Router's Ports tab. Set Baud, data length, Stop and Parity to the values required by your radio.
5. Set the Radio type. For Icom radios you will need to set the appropriate CI-V address in the XX= box.
6. Check PTT for DTR/RTS

7. Select the **Misc tab**
8. Select Source **Mono**
9. Set Clock **11025**
10. Select the proper sound card **Device ID**

To obtain the proper ID, click **Get ID** button on Router's **Audio Mixer** tab

