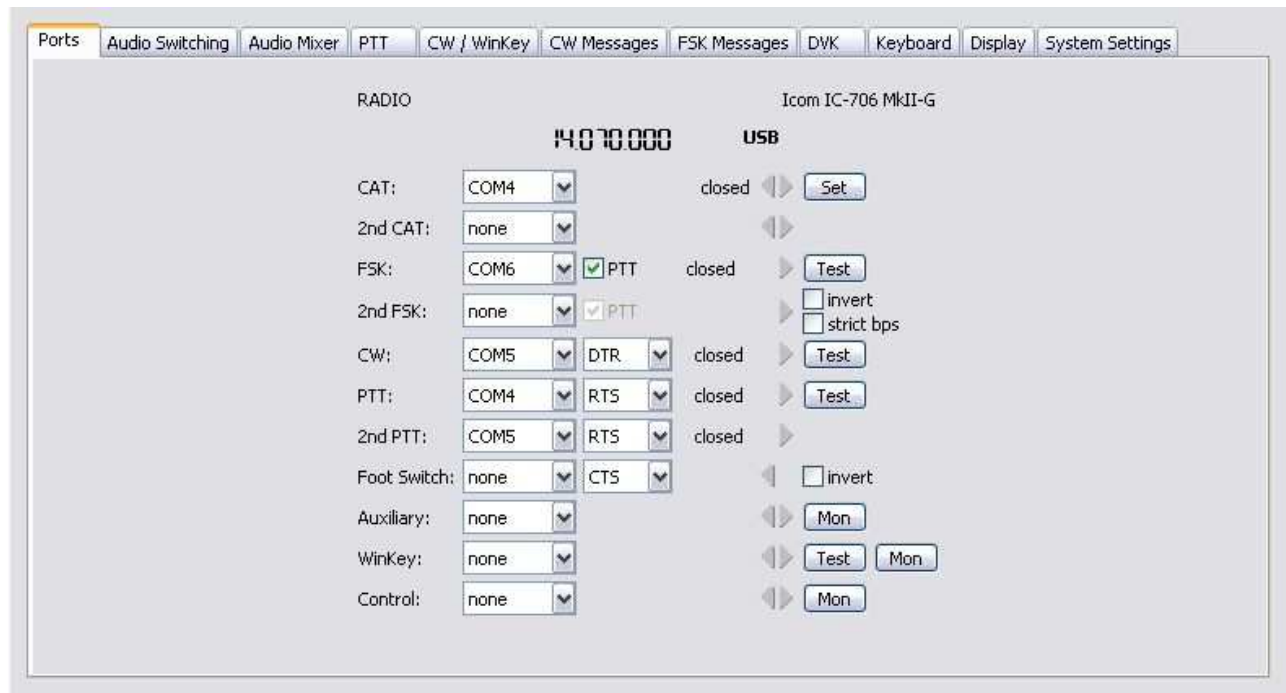


# microKeyer II and TrueTTY Setup

## Router setup:

Note: The absolute port numbers do not matter. The key is consistency - the same port number must be used for a specific function every time it is used.

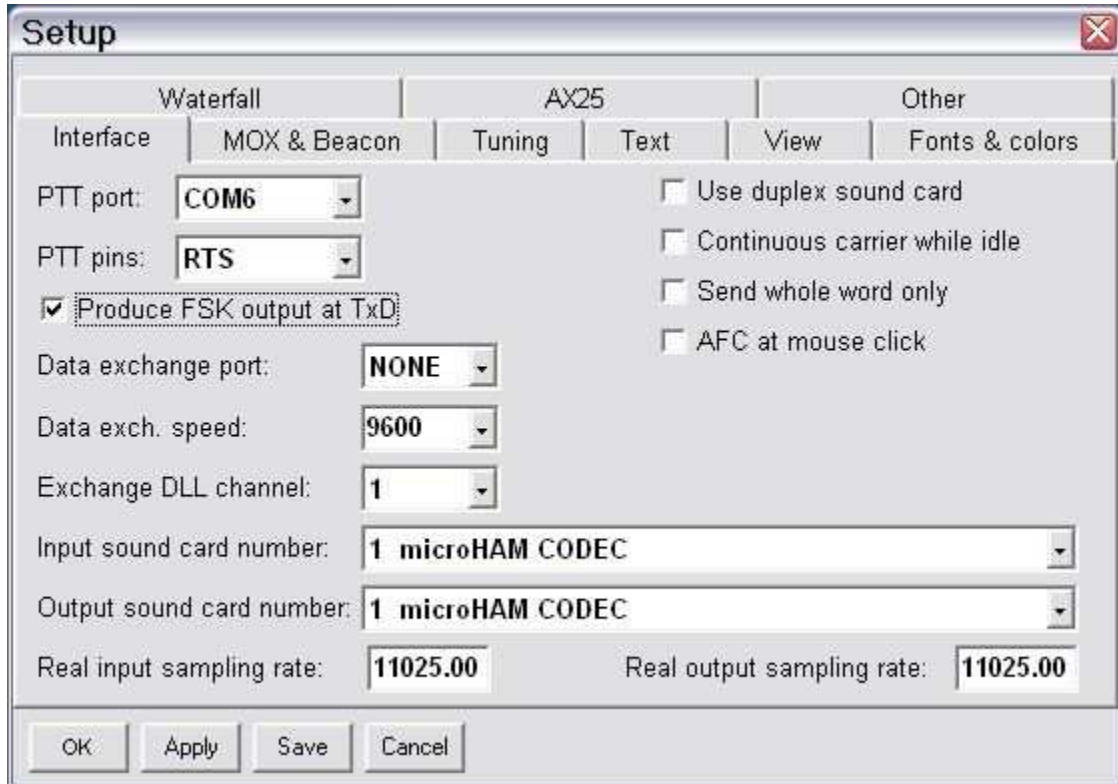
1. TrueTTY does not use a radio control port. You may assign the Radio port for use by a logger or OmniRig.
2. TrueTTY does not use the CW Port but you may assign a port for CW and PTT for use by CW Type.
3. Assign a port for FSK. Check the PTT and "strict BPS" boxes.



4. Save settings to a preset by selecting menu **Preset | Save as**. Choose a position and name it TrueTTY.

## TrueTTY setup:

1. Click **Setup | Interface**
2. Set the PTT to the port you selected for FSK in Router.
3. Set PTT pins to RTS



4. If you will be using FSK for RTTY, check "Produce FSK output at TxD"
5. Select **microHAM CODEC** as the sound card.
6. Set other options as needed for your operation.