

# microKEYER II and Win-Test Setup

## Router setup:

**Note:** The absolute port numbers do not matter. The key is consistency - the same port number must be used for each function in Router, Win-Test and MMTTY.

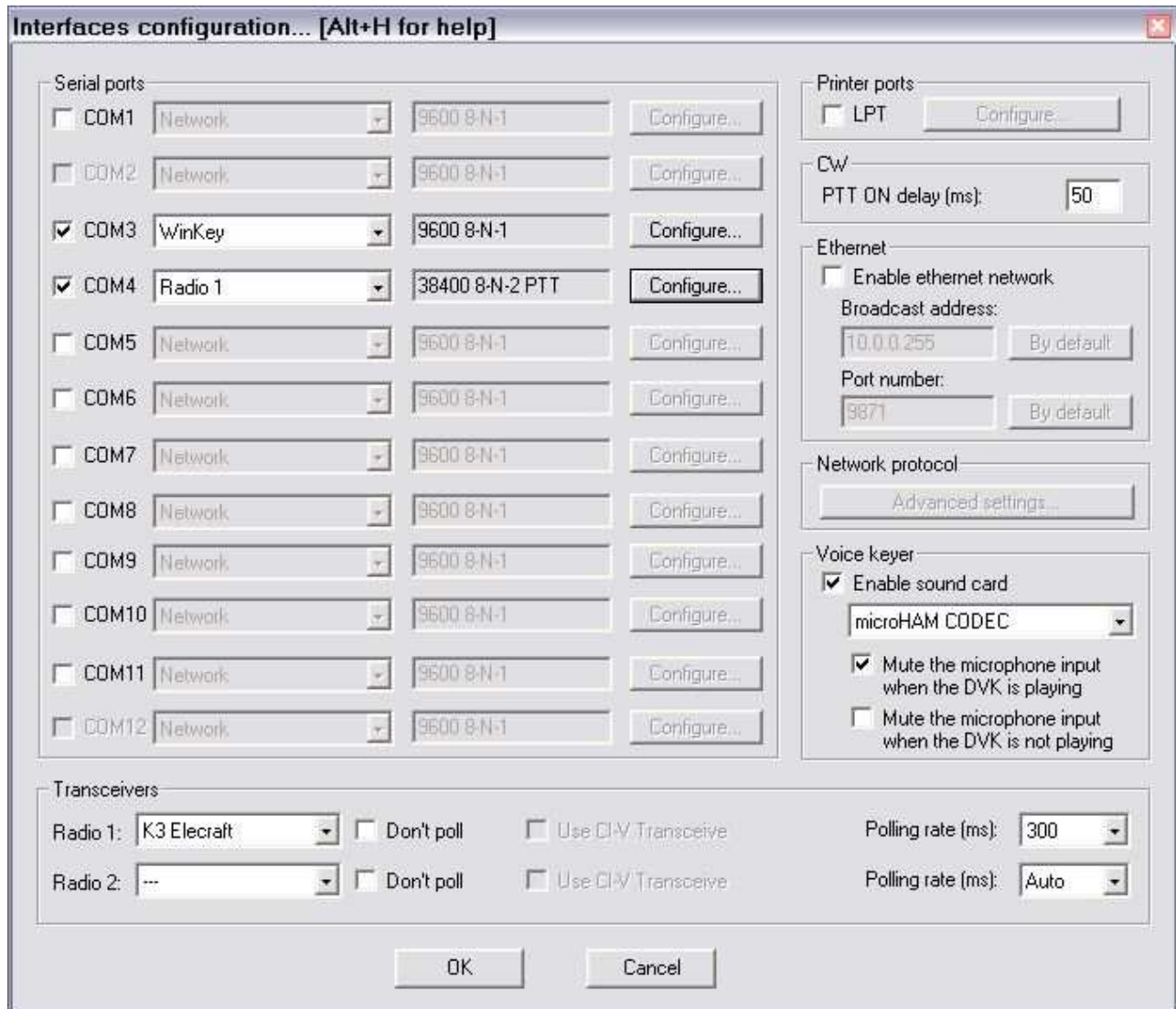
1. Assign the radio control virtual COM port. Click the **Set** button and select your radio from the drop down box. Uncheck the **Disable router queries** box.
2. Set PTT to RTS and assign the same port you used for CAT.
3. Assign a port for WinKey
4. Assign a port for FSK (RTTY) and check PTT. Assign a port for FSK even if you will be using AFSK. If you are not using Win-Test for RTTY contesting you can skip this step.
5. Assign a port for Control if Win-Test will be using the microHAM DVK.



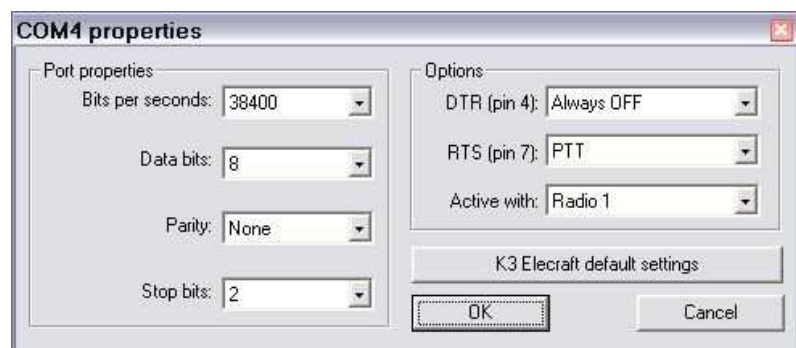
6. On the **Audio Switching** tab. Set VOICE to "Microphone jack, logger or DVK control." Set FSK/DIGITAL to "Line input (rear)."
7. On the **PTT/FSK** tab use **PTT1** for VOICE, **PTT1 or QSK** for CW and **PTT2** for FSK/DIGITAL.
8. Save settings to a preset by selecting menu **Preset | Save as**. Choose a position and name it Win-Test.

# Win-Test setup:

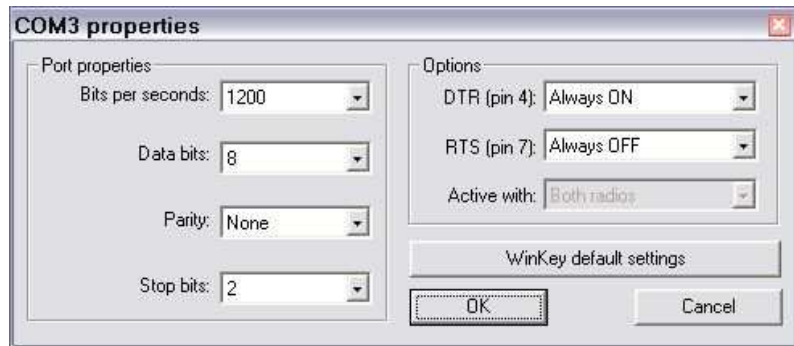
## 1. Click **Options | Configure Interfaces ....**



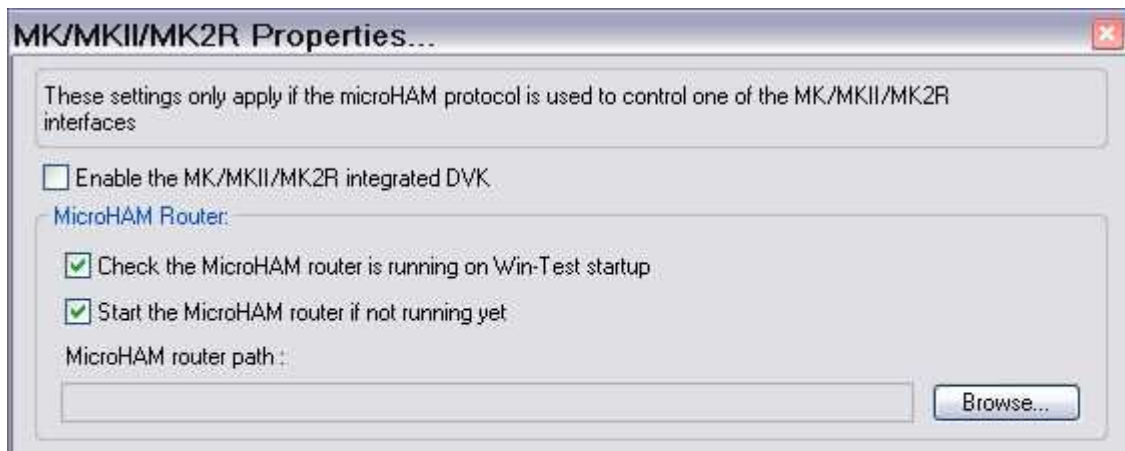
2. If you will be using the Win-Test DVK, check "Enable sound card" and set the sound card to microHAM CODEC for DVK.
3. Check "Mute microphone input when DVK is playing"
4. Check the port you chose for CAT and PTT. Set the interface to Radio 1.
5. Click "Configure" and set the port properties for your transceiver.
6. Set DTR to Always Off, and RTS to PTT.
7. Set Active with: Radio 1



8. Check the port you set for WinKey and set the interface to WinKey
9. Click "configure" and set the port properties to 1200, 8N2.
10. Set Options to:  
DTR= Always On  
RTS = Always Off



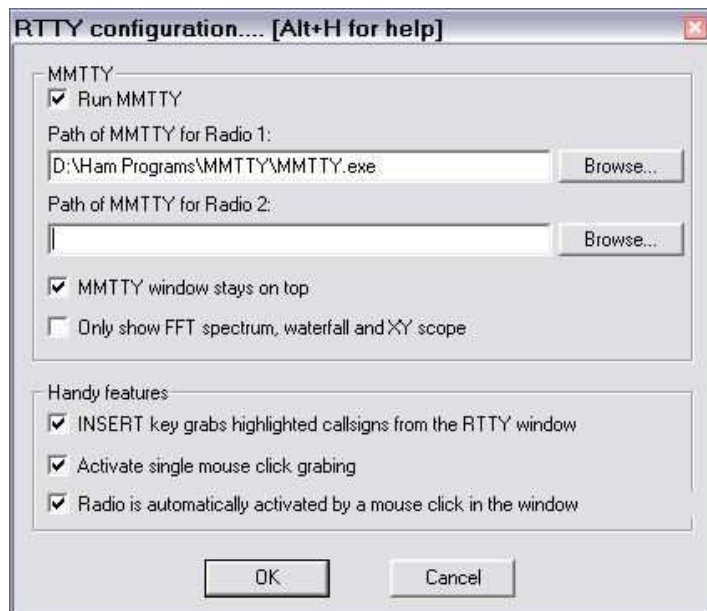
11. Click **Options | MK/MK II/MK2R configuration ....**



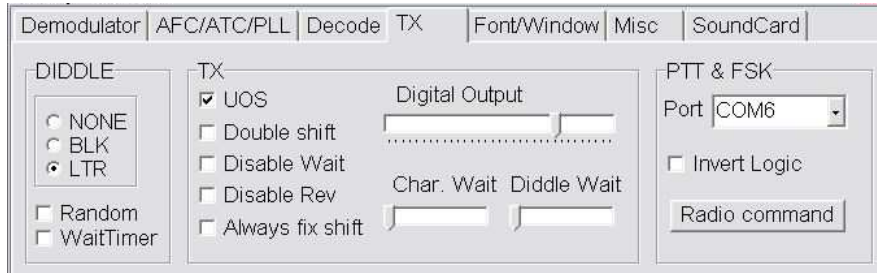
12. Check **Enable the MK/MK II/MK2R integrated DVK** if you plan to use the Router DVK.
13. Check the boxes for Router if you want Win-Test to start Router when it starts

## RTTY/Digital setup:

RTTY operation with microKEYER II and Win-Test requires the use of MMTTY.



1. Install MMTTY on your computer.
2. Select **Options | RTTY Configuration**
3. Check "Run MMTTY"
4. Enter the path to MMTTY
5. Make any other selections based on your operating preferences.
6. Start/open MMTTY from the path specified for Radio 1.
7. Select **Option (O) | Setup (O)** on the MMTTY Spectrum/waterfall window.
8. Select the TX tab

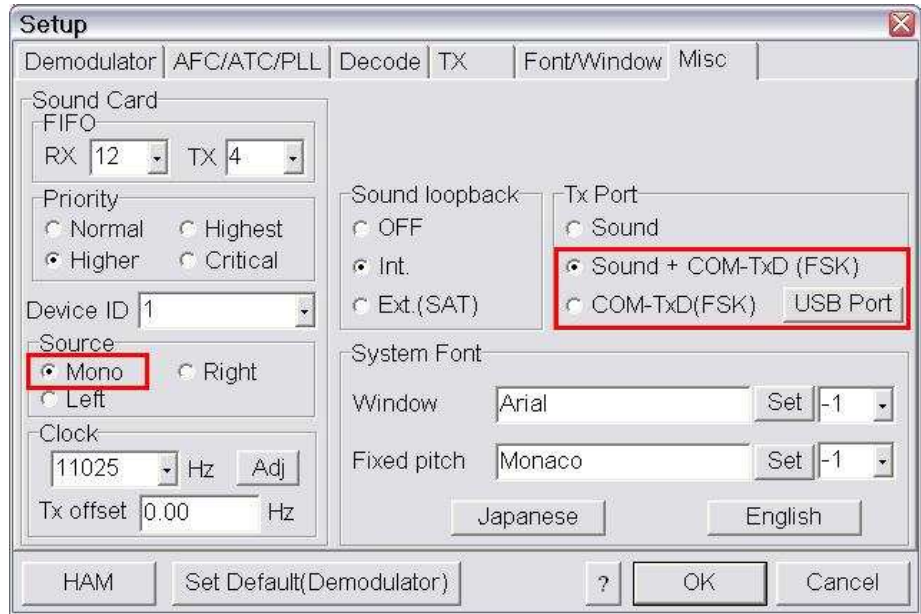


9. Set "PTT & FSK" to the Port you selected for FSK in Router

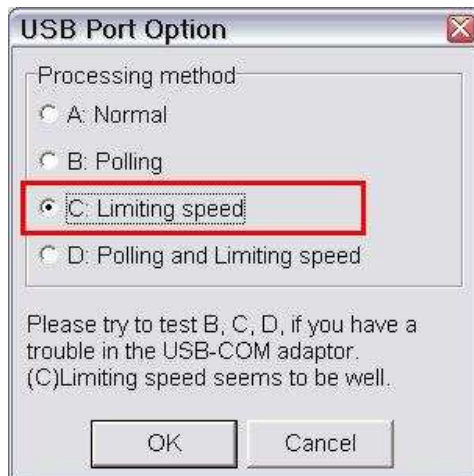
10. Select the Misc Tab
11. Select **Source Mono**
12. Select clock **11025**
13. Select proper Sound card **Device ID** number or select the Sound card on the SoundCard tab.

To obtain the proper ID, click **Get ID** button on Router's **Keying** tab.

14. Select COM-TxD (FSK) for the TX Port.



If you want the option to switch between AFSK and FSK, select Sound + COM-TxD (FSK)



15. Click the USB Port button
16. Select "C: Limiting speed"
17. Click "OK"