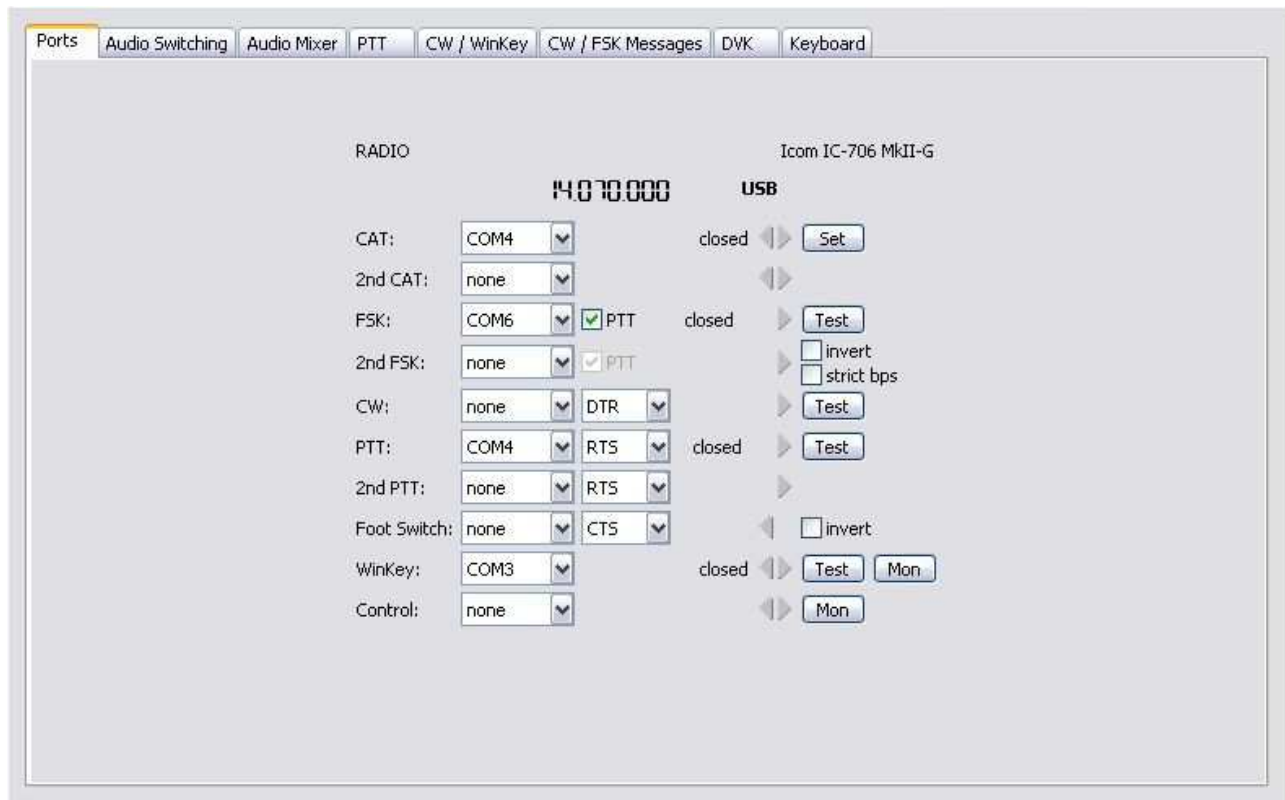


# microKEYER and DXLab Suite

## **Router setup:**

**Note: The absolute port numbers do not matter. The key is consistency - the same port number must be used for a specific function every time it is used.**

1. Assign the radio control virtual COM port. Click the **Set** button and select the radio from the drop down box. Uncheck the **Disable router queries** box.
2. Assign a port for WinKey.
3. Assign a port for FSK – check the PTT box.
4. Assign the same port for PTT as you assigned for Control.



5. On the **PTT** tab, select **PTT1 (microphone jack)** for CW and Voice modes. For FSK/DIGITAL select **PTT2 (rear panel jack)**. If you operate QSK in CW select **QSK** for CW.
6. Save settings to a preset by selecting menu **Preset | Save as**. Choose a position and name it DXLab.

# CI-V Commander setup:

1. Click **Config** and select the **Ports tab ...**



2. Select the virtual COM port you used for control in Router's Ports tab
3. Select the Baud Rate, Parity, Word Length, and Stop Bits settings required by your radio.
4. Set DTR "always off"
5. Set RTS "on to xmit" - this is PTT

Note: If you use more than one radio with DXLab Suite, these settings should be made on the appropriate port port on the "Multi-Radio" tab.

6. If your transceiver supports PTT via computer command you **must** check "suppress CAT" in the PTT box in the center of Commander's Config | General tab.

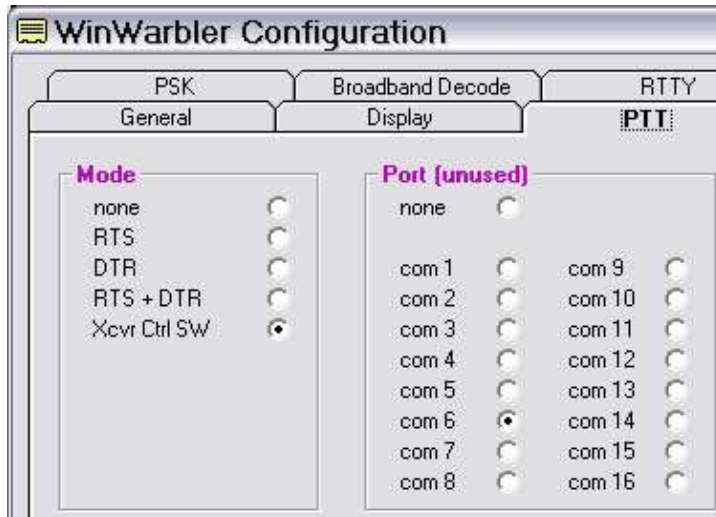


# WinWarbler setup:

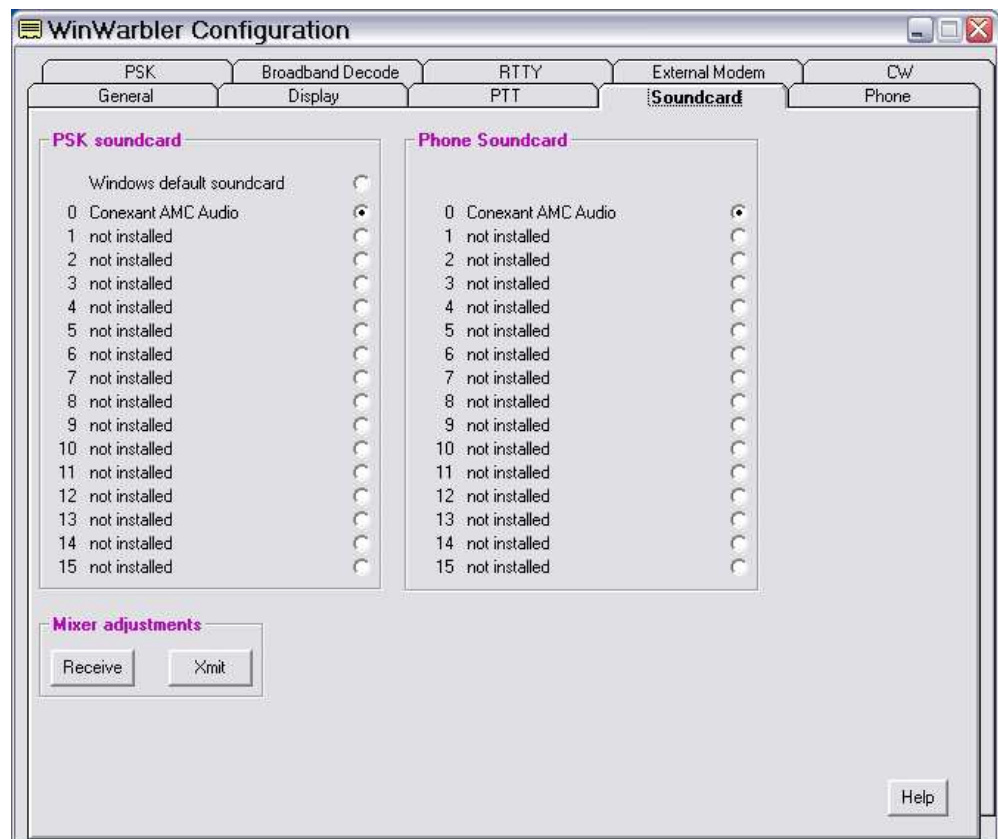
**Note:** It is important to execute the following steps in order. Otherwise PTT, FSK and CW sharing will not operate properly.

This configuration is for WinWarbler with Commander. To configure and run WinWarbler in stand-alone mode or with another logger, see the separate *microKEYER and WinWarbler Setup Guide*.

The user has the option to configure WinWarbler for either FSK or AFSK. Configuration information is provided for both options.

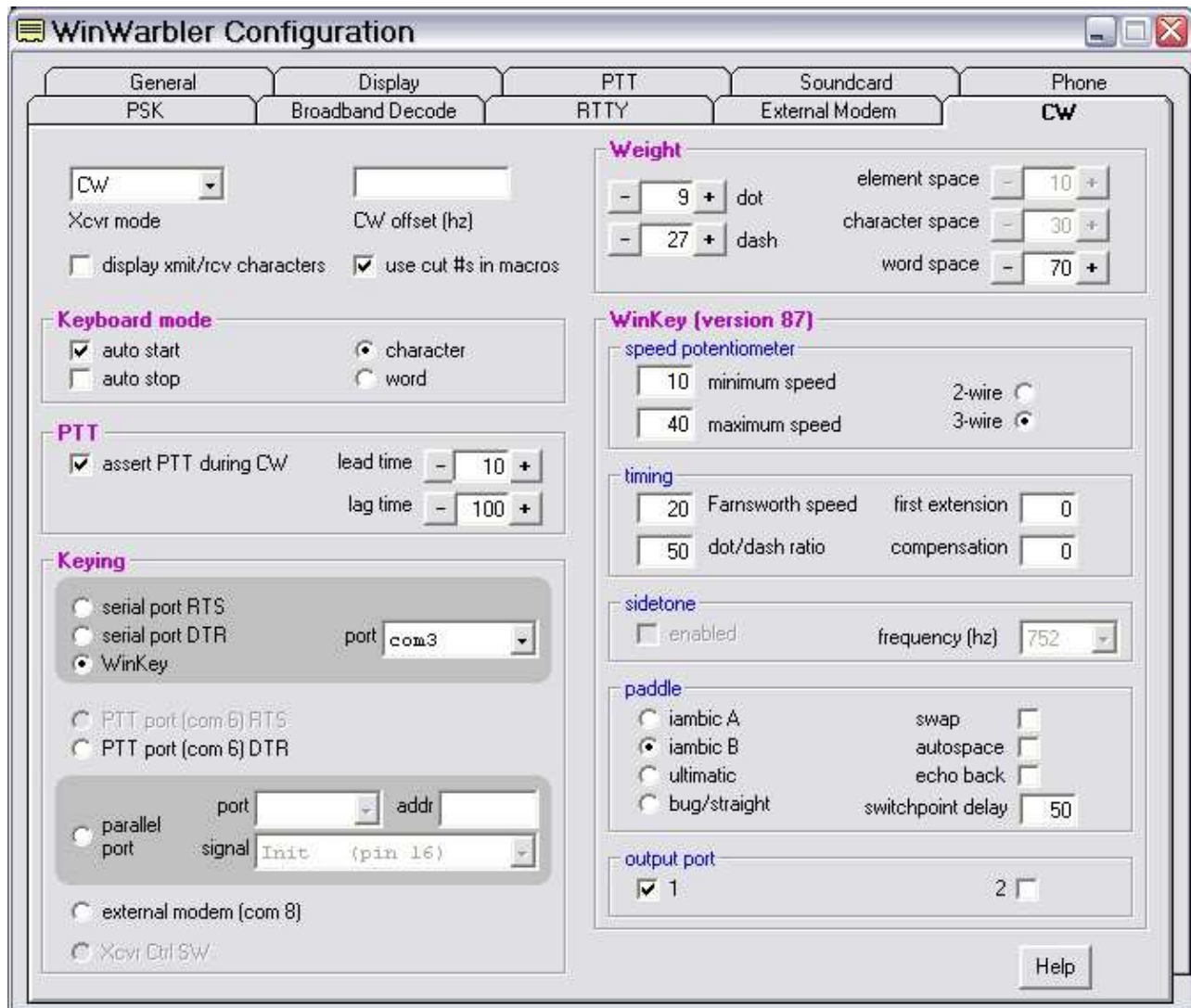


1. Click **Config** and select the **PTT tab** ...
2. Select "Xcwr Ctrl SW" as the Mode. WinWarbler will direct commander to assert PTT in Phone (Voice) and PSK modes.
3. Select the port you defined for FSK in the "Port" box. This will be used for MMTTY FSK and PTT.
4. Select the Soundcard Tab
5. Choose the soundcard you will use for PSK & RTTY Reception, PSK & RTTY (AFSK) Transmission, and Phone.



## CW setup:

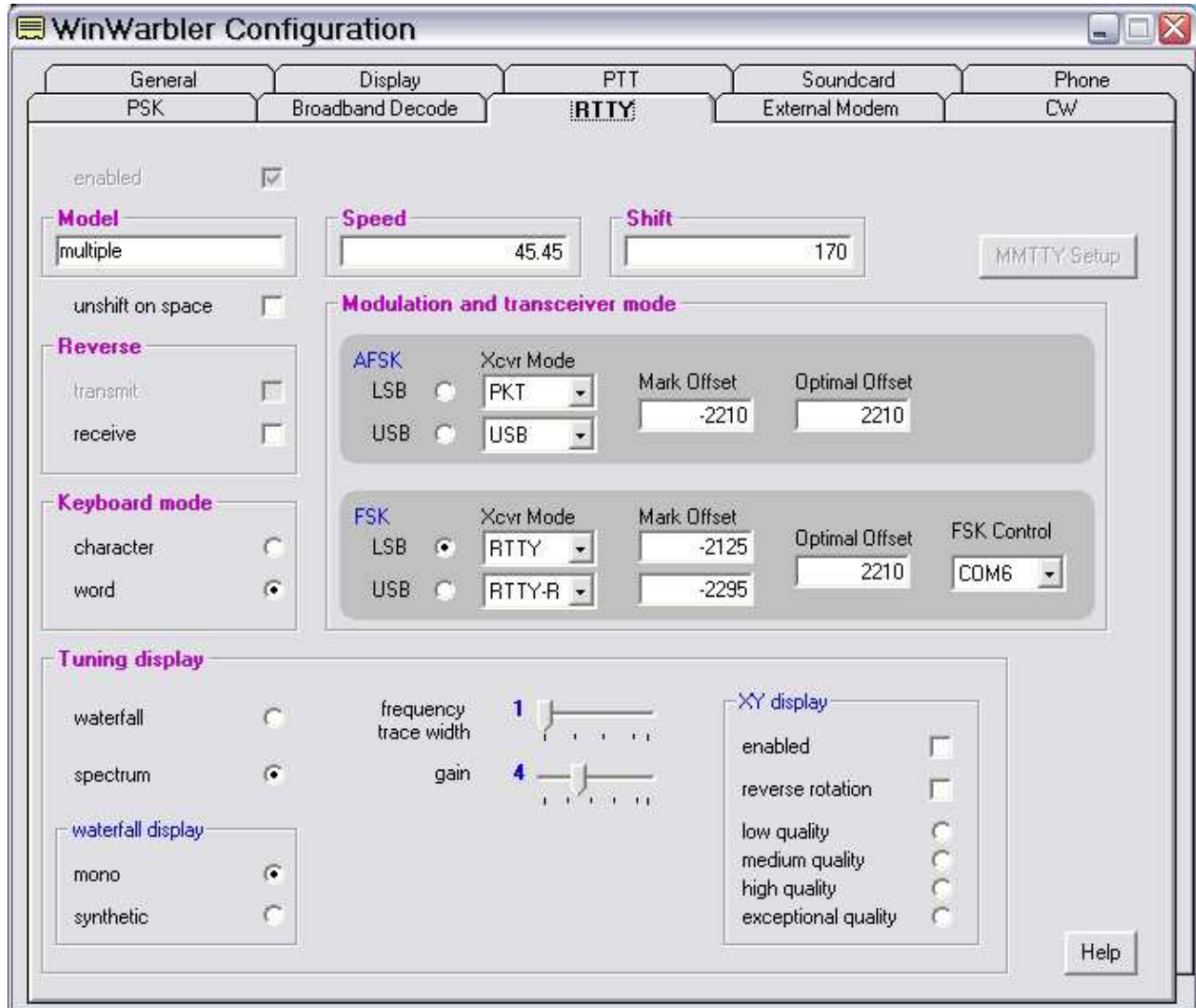
1. Switch WinWarbler to CW Mode
2. Open the WinWarbler's Configuration and select the **CW Tab**.



3. Select **WinKey** in the Keying box and set the Port that you chose for Winkey in Router.
4. Configure the settings you prefer for CW operation including weight, and PTT or QSK operation.

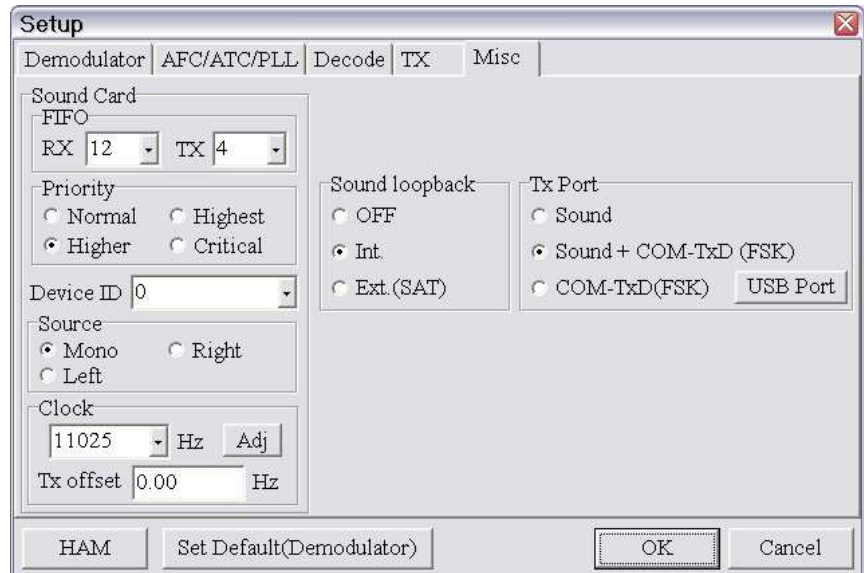
## RTTY/MMTTY setup (FSK):

1. Switch WinWarbler to RTTY mode.
2. Click **Config** and select the **RTTY tab** ...



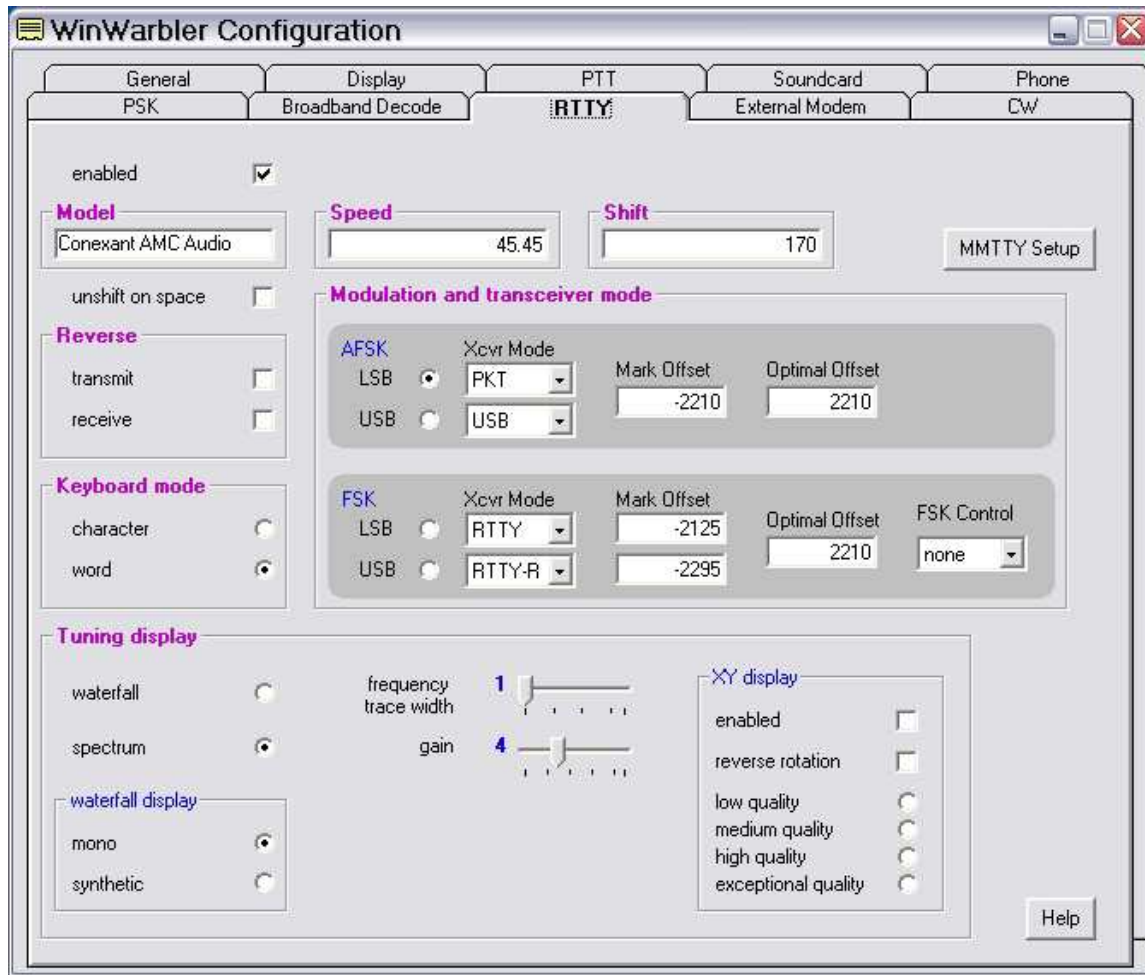
3. Configure the FSK Settings as needed by your radio
4. Set FSK Control to the port you selected for FSK in Router.

5. Click on the **MMTTY Setup** button ...
6. Select the **Misc Tab ...**
7. Select Source **Mono**
8. Set Clock **11025**
9. Click **USB port** button and choose **C: Limiting speed**



## RTTY/MMTTY setup (AFSK):

1. Switch WinWarbler to RTTY mode.
2. Click **Config** and select the **RTTY tab ...**



3. Configure the AFSK Settings required by your radio.
4. Set FSK Control to None
5. Click on the **MMTTY Setup** button ...
6. Choose the **Misc Tab**.
7. Select Source **Mono**
8. Set Clock **11025**

