

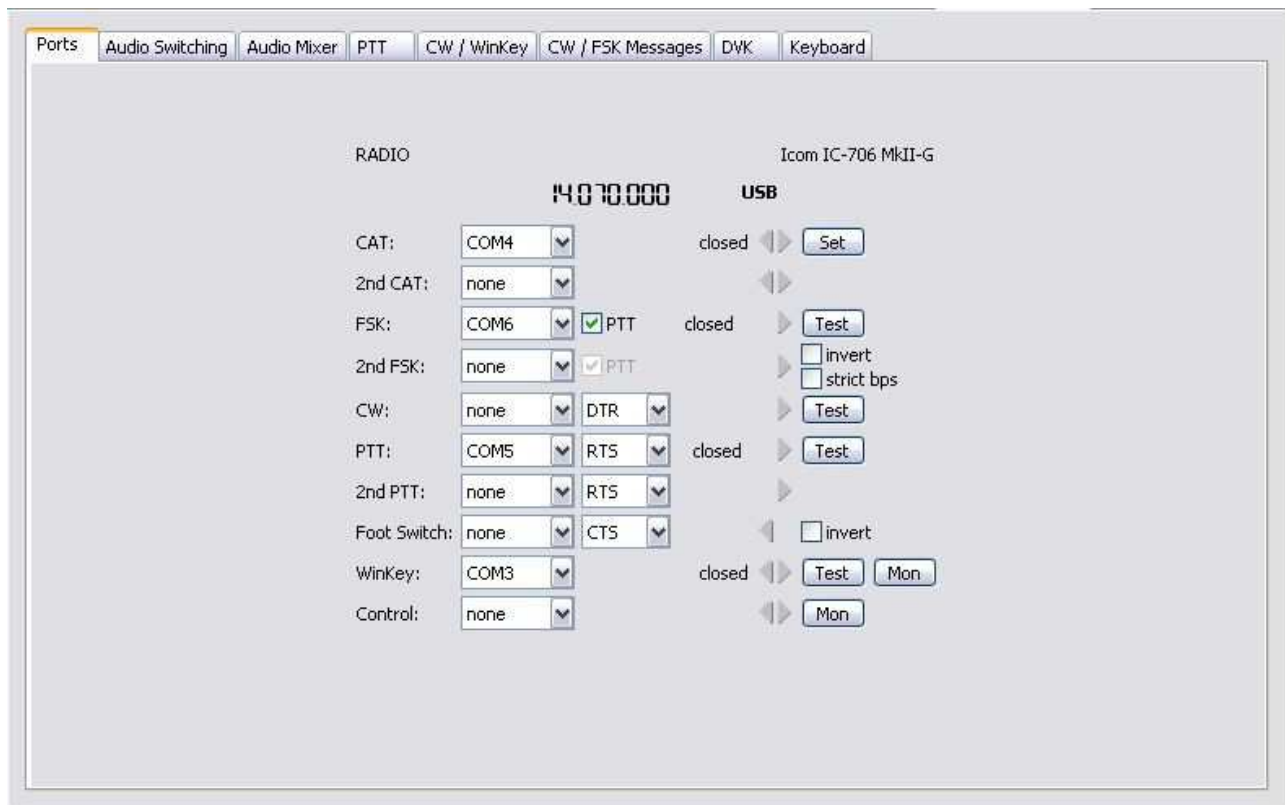
microKEYER and WinWarbler Setup

Router setup:

Note: The absolute port numbers do not matter. The key is consistency - the same port number must be used for a specific function every time it is used.

This document is written for those using WinWarbler alone.

1. Assign the radio control virtual COM port (radio control is optional – set this port for a separate logging program). Click the **Set** button and select the radio from the drop down box. Uncheck the **Disable router queries** box.
2. Assign a port for WinKey.
3. Assign a port for FSK – check the PTT box.
4. Assign a port for PTT.



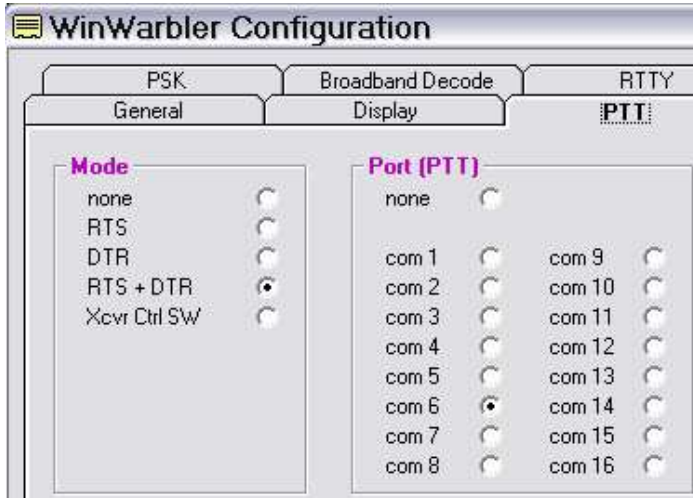
5. On the **Audio Switching** tab, set FSK/DIGITAL to BBB and set the Voice/Digital box to "Use Digital Settings". This is appropriate for most CW and Digital operation.
6. On the **PTT/FSK** tab, set all PTT options to "PTT2 (rear panel jack)." If you operate QSK in CW select **QSK** for CW.
7. Save settings to a preset by selecting menu **Preset | Save as**. Choose a position and name it WinWarbler.

WinWarbler setup:

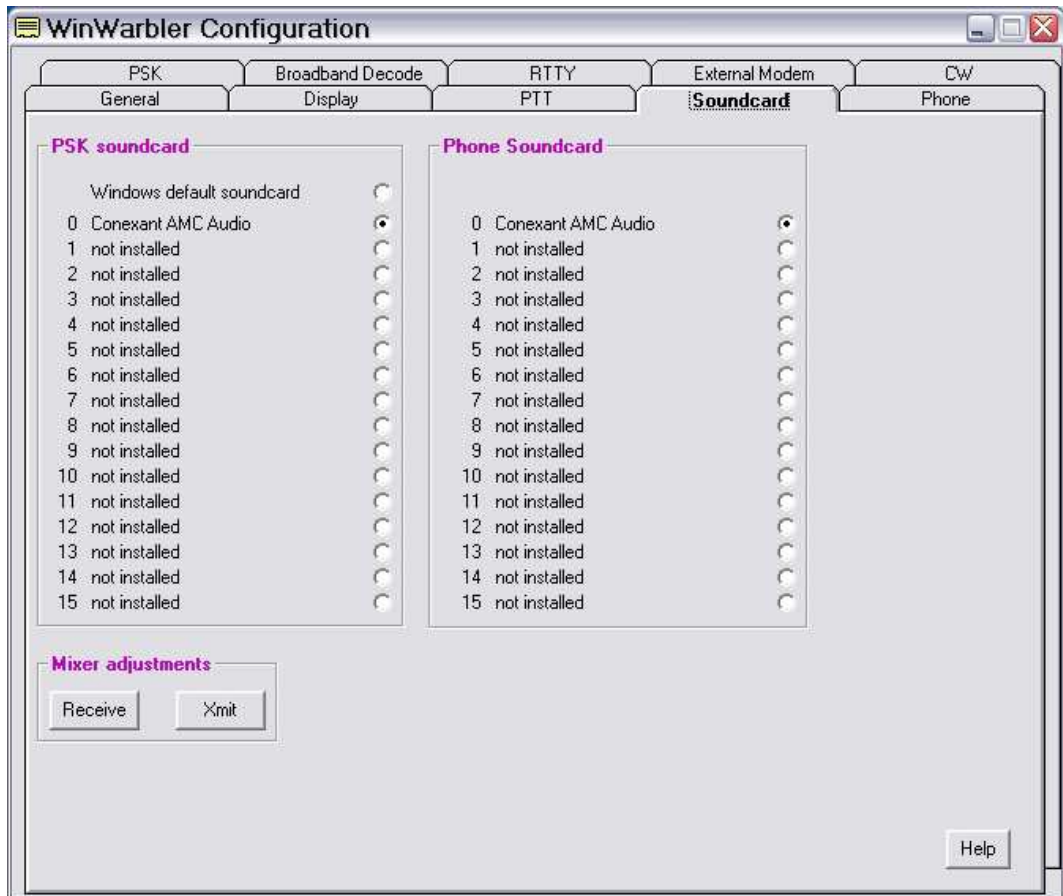
Note: It is important to execute the following steps in order. Otherwise PTT, FSK and CW sharing will not operate properly.

This configuration is for WinWarbler in stand-alone mode. To configure and run WinWarbler with Commander and the rest of the DXLab Suite, see the separate *microKEYER and DXLab Suite Setup Guide*.

The user has the option to configure WinWarbler for either FSK or AFSK. Configuration information is provided for both options.

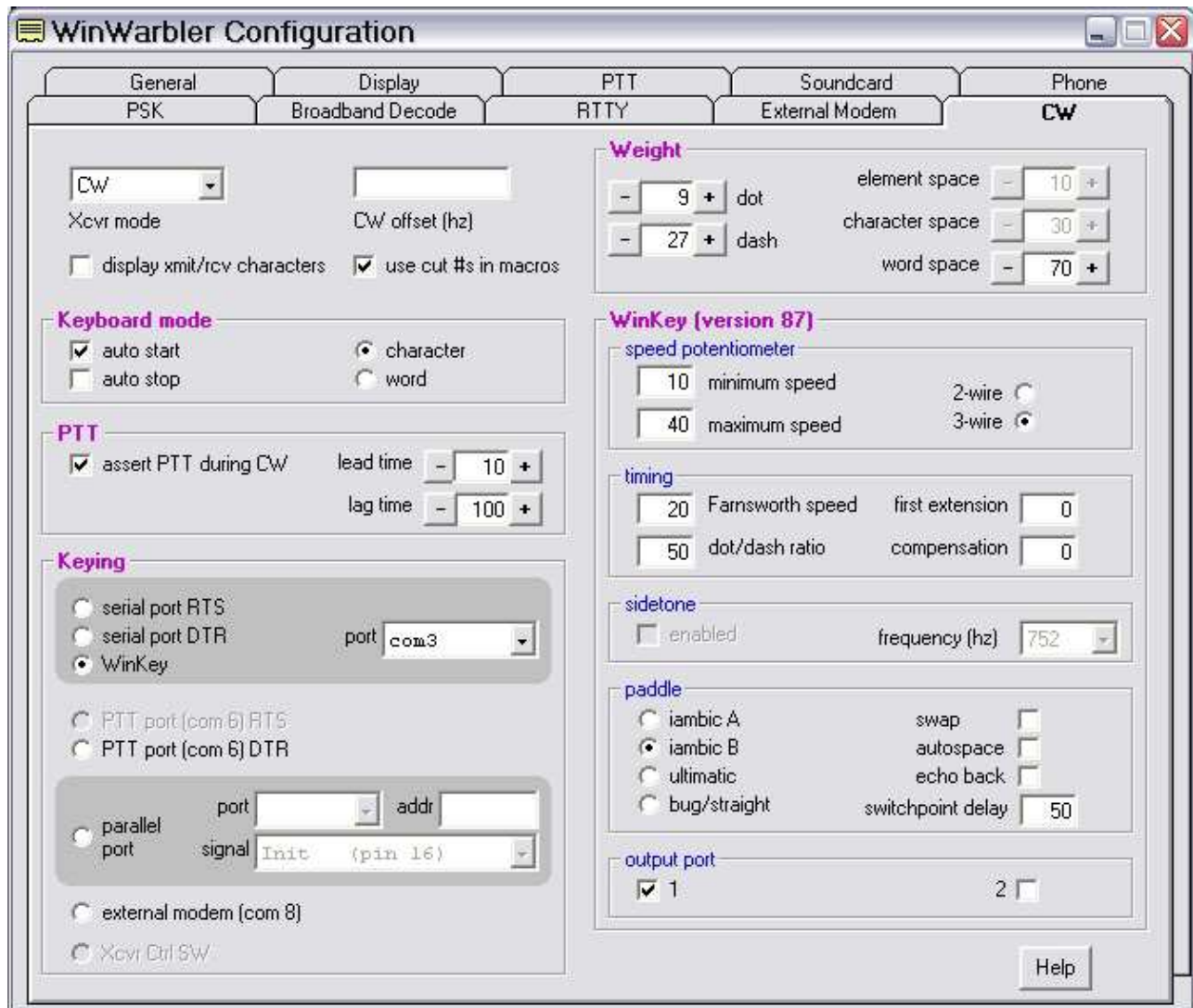


1. Click **Config** and select the **PTT tab** ...
2. Select "RTS + DTR" as the Mode.
3. If you plan to use FSK, set "Port" to the port you selected for FSK. Otherwise, set "Port" to the port you selected for PTT.
4. Select the Soundcard tab
5. Choose the soundcard you will use for PSK and Phone.



CW setup:

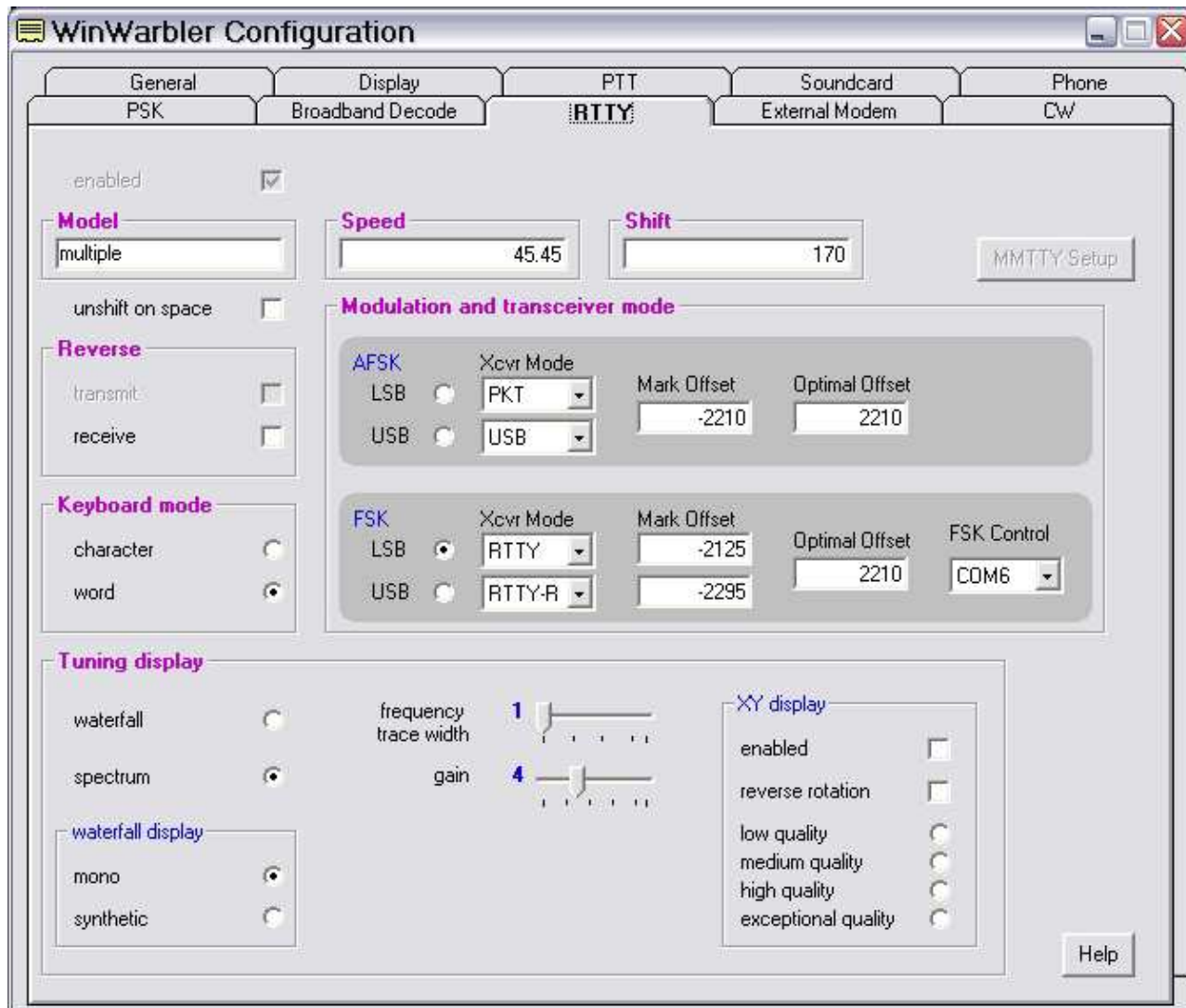
1. Switch WinWarbler to CW Mode
2. Open the WinWarbler's Configuration and select the **CW Tab**.



3. Select **WinKey** in the Keying box and set the Port that you chose for Winkey in Router.
4. Configure the settings you prefer for CW operation including weight, and PTT or QSK operation.

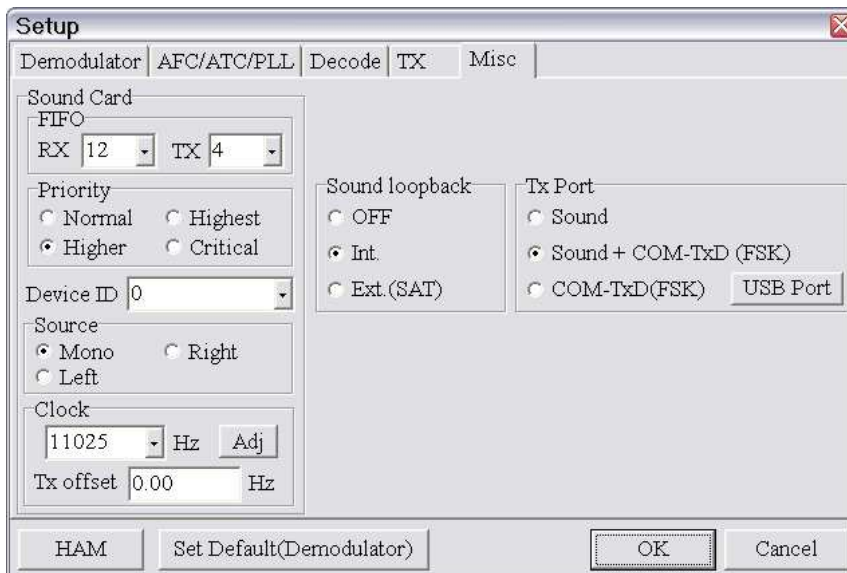
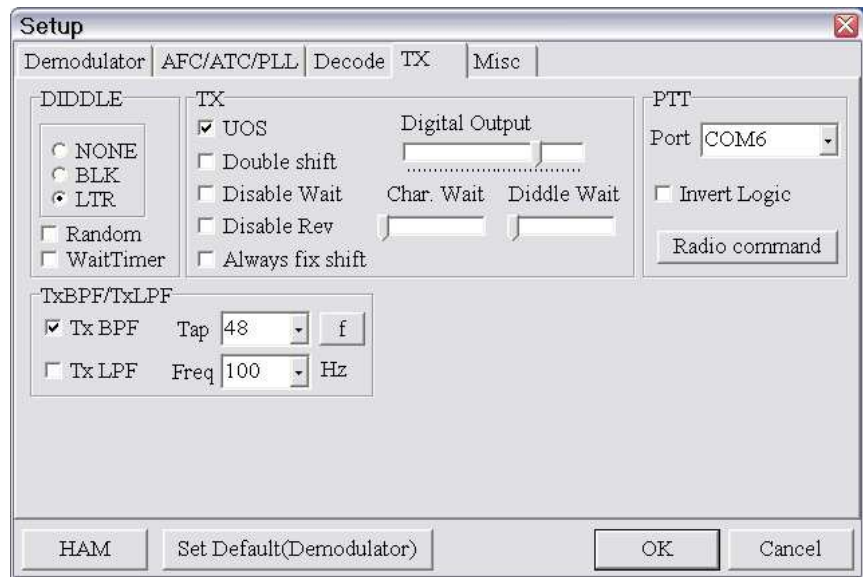
RTTY/MMTTY setup (FSK):

1. Switch WinWarbler to RTTY mode.
2. Click **Config** and select the **RTTY tab ...**



3. Configure the FSK Settings as needed by your radio
4. Set FSK Control to the port you selected for FSK in Router.

5. Click **Config** and select the **RTTY tab ..**
6. Click on the **MMTTY Setup** button ...
7. Select the **TX Tab ...**
8. Select the **Misc Tab ...**



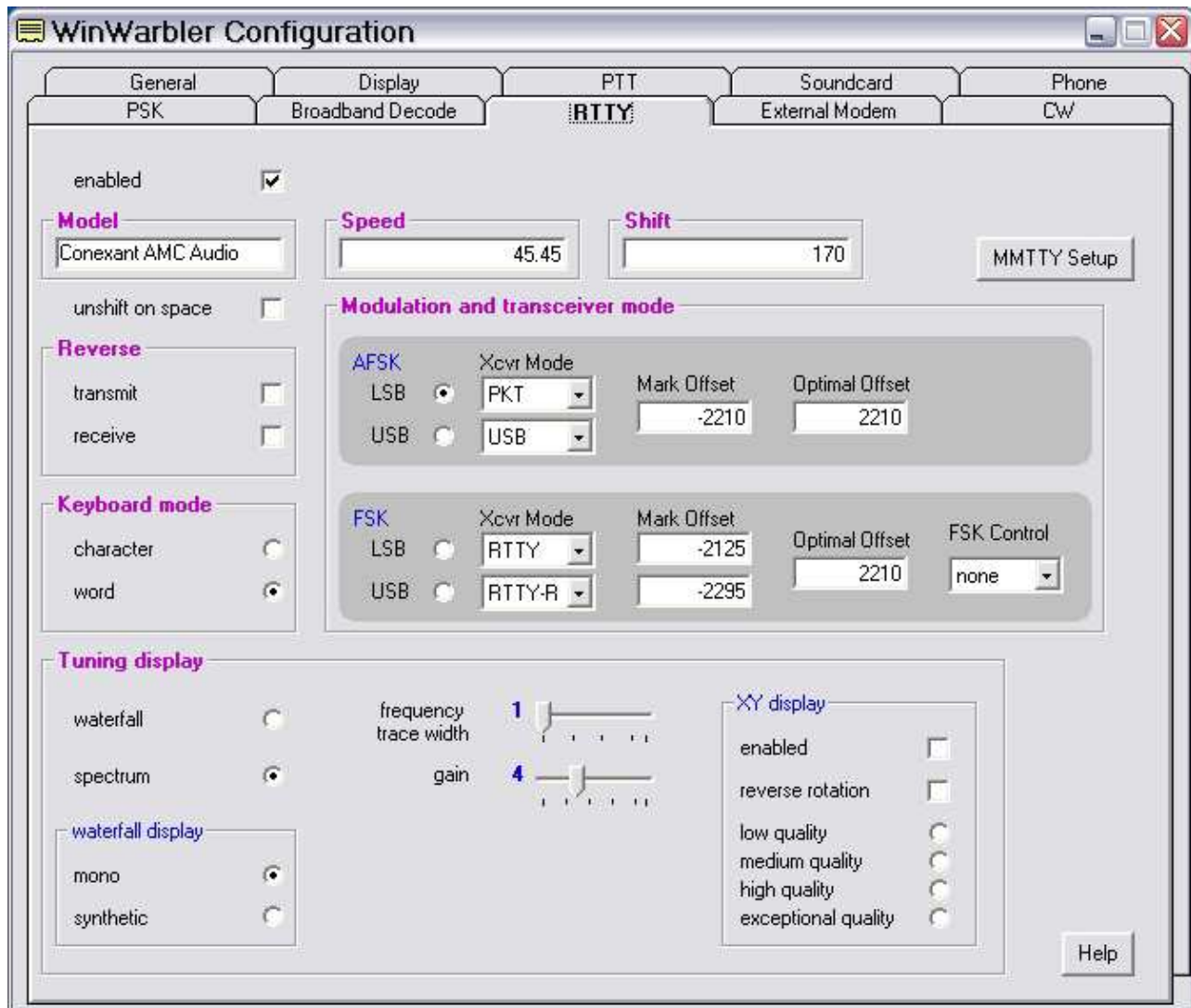
9. Select Source **Mono**
10. Set Clock **11025**
11. Select the proper sound card **Device ID**
12. To obtain the proper ID, click **Get ID** button at the Router **Audio Mixer** tab or from WinWarbler's **Soundcard** tab.
13. Select COM-TxD (FSK) for the TX Port. If you want the option to switch between AFSK and FSK, select Sound + COM-TxD (FSK)

14. Click **USB port** button and choose **C: Limiting speed**



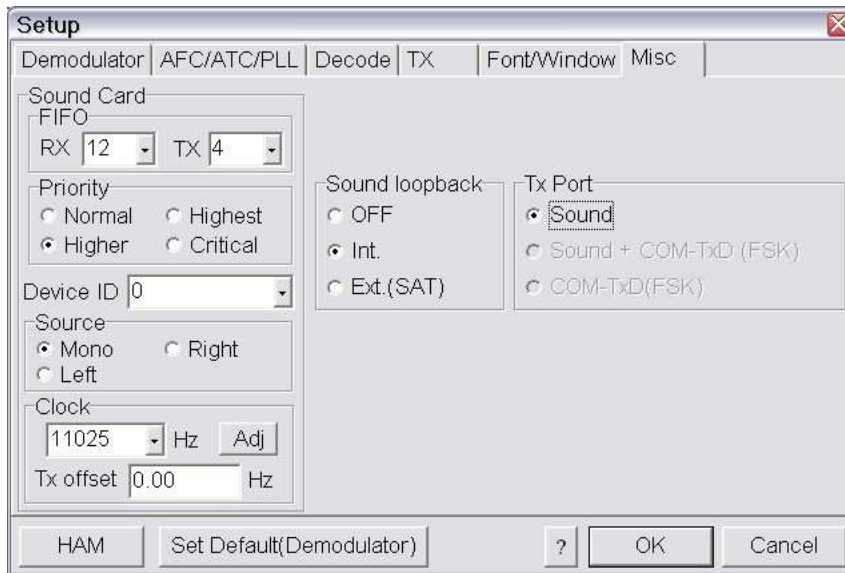
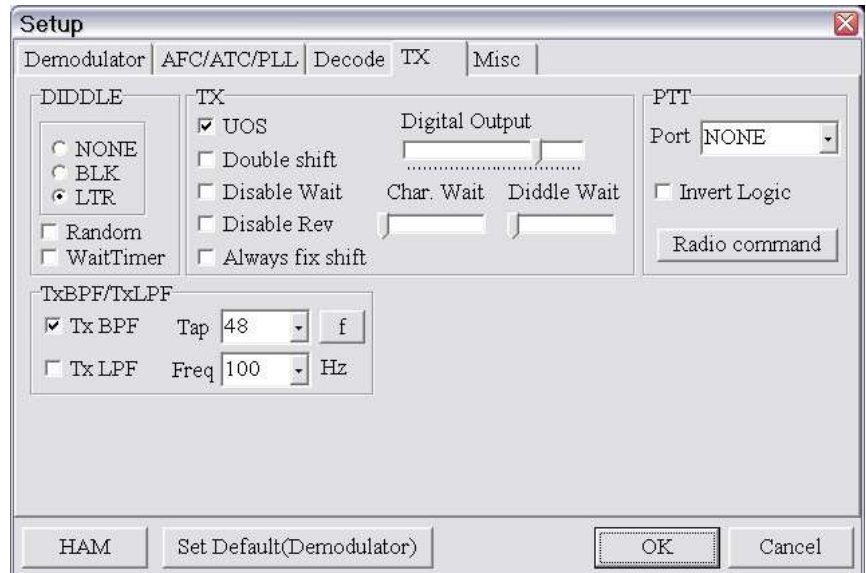
RTTY/MMTTY setup (AFSK):

1. Switch WinWarbler to RTTY mode.
2. Click **Config** and select the **RTTY tab** ...



3. Configure the AFSK Settings required by your radio.
4. Set FSK Control to None

5. Click on the **MMTTY Setup** button ...
6. Select the **TX Tab** ...
7. Choose the **Misc Tab**.



8. Select Source **Left**
9. Set Clock **11025**
10. Select the proper sound card **Device ID**
11. The Device ID is available from WinWarbler's **Soundcard** tab or by clicking the **Get ID** button on Router's **Audio Mixer** tab.
12. Select "Sound" as the TX Port.