

micro2R and Win-Test setup

"Classic" SO2R

Router setup:

Note: The specific port numbers are not important. The key is consistency - the same port number must be used for a specific function in both Router and Win-Test.

micro2R does not provide transceiver control. You will need a CAT/CI-V interface for each radio. They can be anything from traditional serial ports to *microHAM microKEYER II*. Connection data is in the *micro2R* User Manual.

1. Assign a port for Control. N1MM Logger will use this port to select transmit and receive focus.
2. Assign ports for FSK and check the PTT box.

Suggestion: If you are using *microHAM* CAT/CI-V interfaces, use the FSK ports in those devices instead of the FSK ports in *micro2R*.

3. Assign a port for WinKey if you will be using WinKey as the CW output device.
4. Check Use LPT for CW and Use LPT for PTT if you will be using CW and PTT from the LPT port.
5. Use the PTT & ACC tab to select whether *micro2R* is to generate PTT for each radio (Generate PTT Output).

The screenshot shows the 'Ports' configuration window in the micro2R software. The window has a tabbed interface with the following tabs: Audio, PTT & ACC, CW / WinKey, CW Messages, FSK Messages, DVK, Keyboard, and SO2R. The 'Ports' tab is active, showing settings for two radios and global control options.

RADIO 1 Settings:

- Buttons: CW, VOL, FSK
- FSK: COM6 (dropdown), PTT, closed, Test
- 2nd FSK: none (dropdown), PTT, invert, strict bps
- CW: none (dropdown), DTR (dropdown), Test
- PTT: none (dropdown), RTS (dropdown), Test
- 2nd PTT: none (dropdown), RTS (dropdown)

RADIO 2 Settings:

- Buttons: CW, VOL, FSK
- FSK: COM7 (dropdown), PTT, closed, Test
- 2nd FSK: none (dropdown), PTT, invert, strict bps
- CW: none (dropdown), DTR (dropdown), Test
- PTT: none (dropdown), RTS (dropdown), Test
- 2nd PTT: none (dropdown), RTS (dropdown)

Global Control Settings:

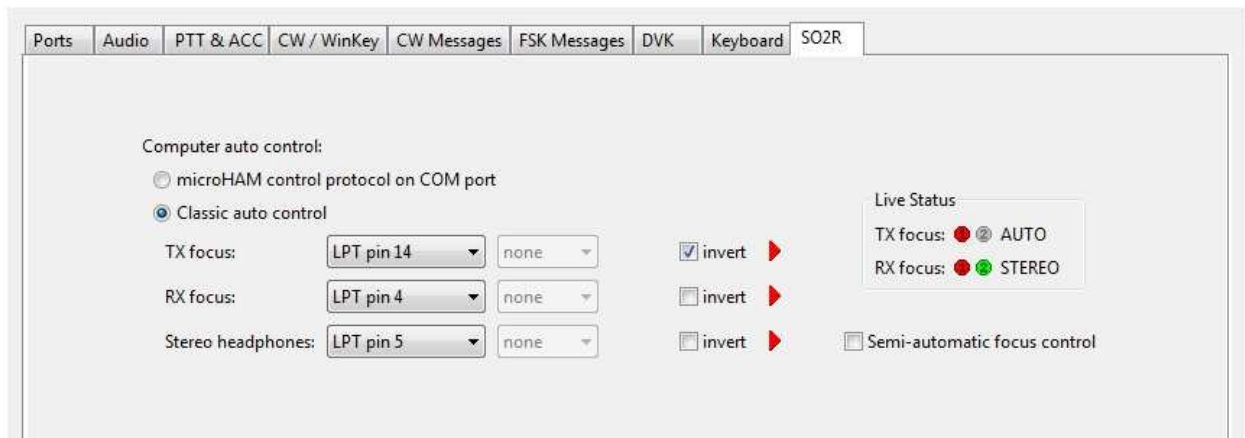
- WinKeyer2: COM3 (dropdown), closed, Test, Mon
- Control: none (dropdown), Mon
- Foot Switch: none (dropdown), CTS (dropdown), invert
- Use LPT for CW
- Use LPT for PTT
- Steer serial CW/PTT
- Steer FSK
- Steer WinKey CW/PTT

6. Check Steer WinKey CW/PTT

7. Select "Classic auto control" on the SO2R tab and assign the following controls:

- ◆ Pin 14 for TX focus - Check Invert
- ◆ Pin 4 for RX focus
- ◆ Pin 5 for Stereo Headphones

These settings allow Win-Test to control transmit and receive focus automatically.

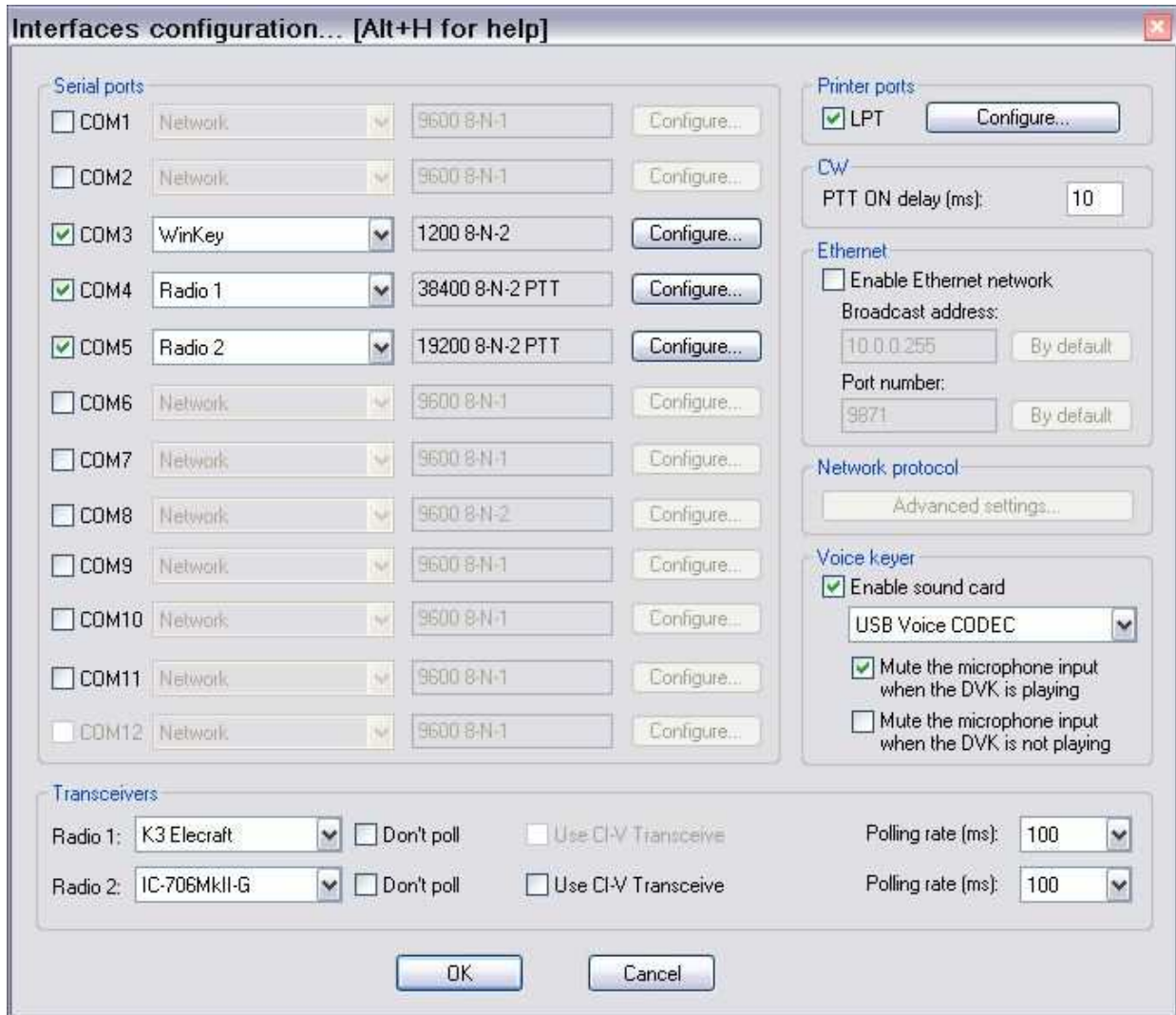


Note: Antenna Relay control is not available with LPT (Classic) control of *micro2R*.

8. Save the settings to a preset by selecting menu Preset | Save as. Choose a position and name it Win-Test.

Win-Test setup:

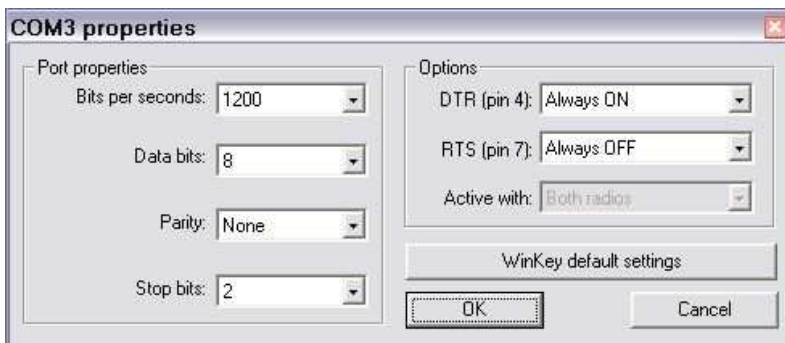
1. Click **Options | Configure Interfaces**



2. Check "Enable sound card" and select the sound card connected to **micro2R**.

3. Check "Mute microphone input when DVK is playing"

Note: The *microHAM* DVK is not available with LPT (Classic) control of *micro2R*.



To use WinKey for CW:

4. Check the port you set for WinKey and set the interface to WinKey

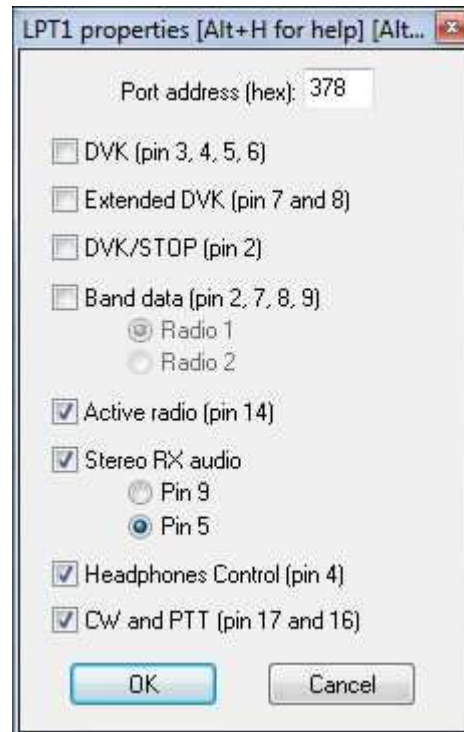
5. Click "configure" and set the port properties to 1200, 8N2.

6. Set Options to: DTR= Always On and RTS = Always Off

7. Check the printer port.
8. Click "configure"
9. Set the Port address.
10. Check **Active Radio (pin 14)**
11. Check **Stereo RX audio** and select Pin 5
12. Check **Headphones Control (pin 4)**

To use LPT for CW:

13. Check "CW and PTT" (pin 17 and 16)



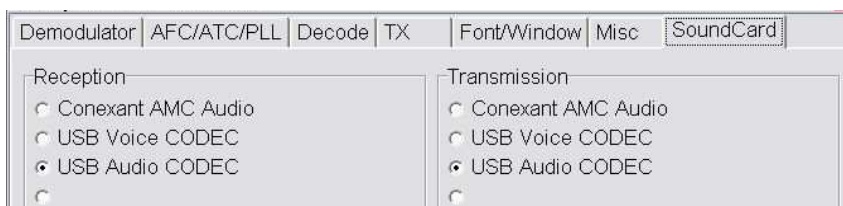
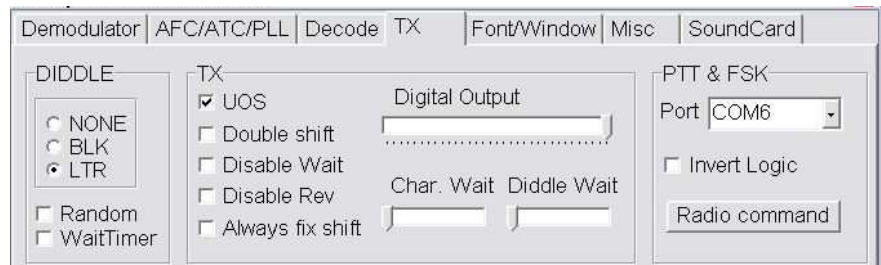
RTTY/Digital setup:

RTTY operation with microKEYER II and Win-Test requires the use of MMTTY.

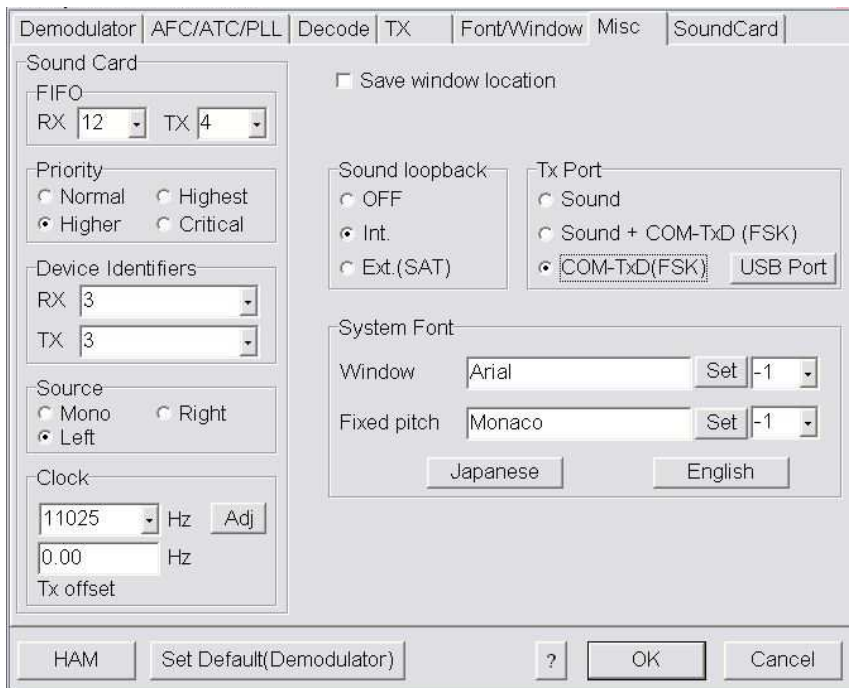


1. Install MMTTY in two separate directories on your computer.
2. Select **Options | RTTY Configuration**
3. Check "Run MMTTY"
4. Enter the path to to each instance MMTTY
5. Make any other selections based on your operating preferences.
6. Start/open MMTTY from the path specified for Radio 1.
7. Select **Option (O) | Setup (O)** on the MMTTY Spectrum/waterfall window.
8. Select the TX tab

9. Set "PTT & FSK" to the port you selected for Radio 1 FSK in Router



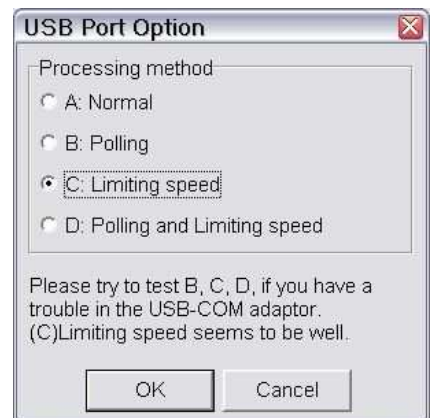
10. Select the SoundCard tab and set Transmission and Reception to the sound card you will use for RTTY with Radio 1



11. Select the **Misc** tab.

12. If you will be using one sound card for both radios, select **Source = Left**

13. Set Tx Port to COM-TxD(FSK)



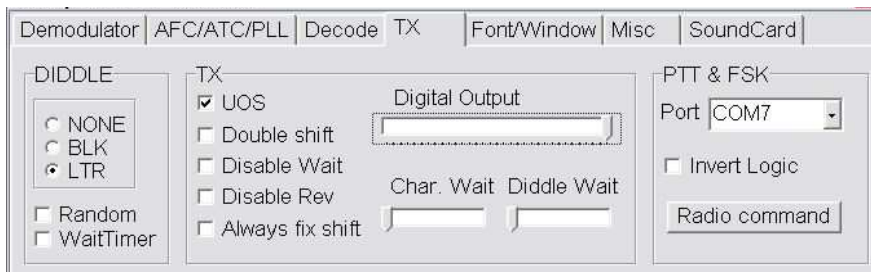
14. Click the **USB Port** button

15. choose **C: Limiting speed** and click OK

16. Start/open MMTTY from the path specified for Radio 2.

17. Select **Option (O) | Setup (O)** on the MMTTY Spectrum/waterfall window.

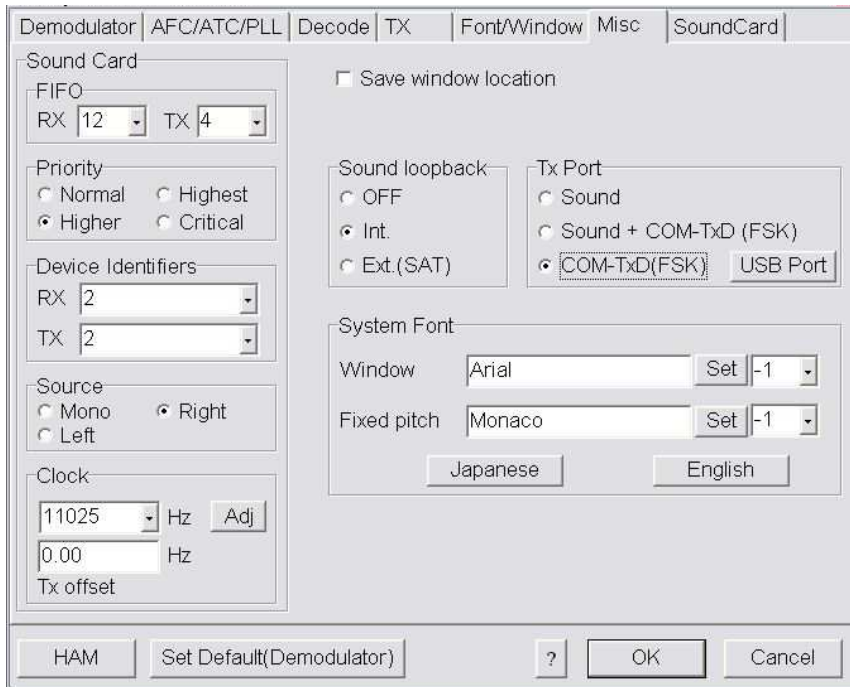
18. Select the TX tab.



19. Set "PTT & FSK" to the port you selected for Radio 2 FSK in Router

20. Select the SoundCard tab and set Transmission and Reception to the sound card you will use for RTTY with Radio 2.

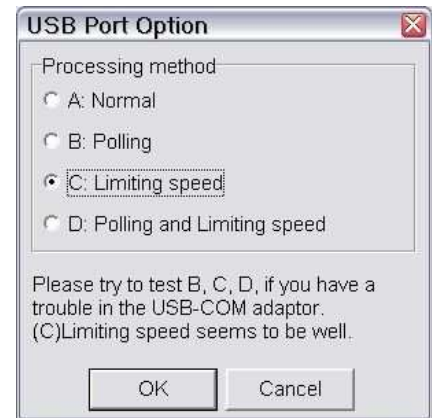




21. Select the **Misc** tab.

22. If you will be using one sound card for both radios, select **Source = Right**

23. Set Tx Port to COM-TxD(FSK)



24. Click the **USB Port** button

25. choose **C: Limiting speed** and click OK