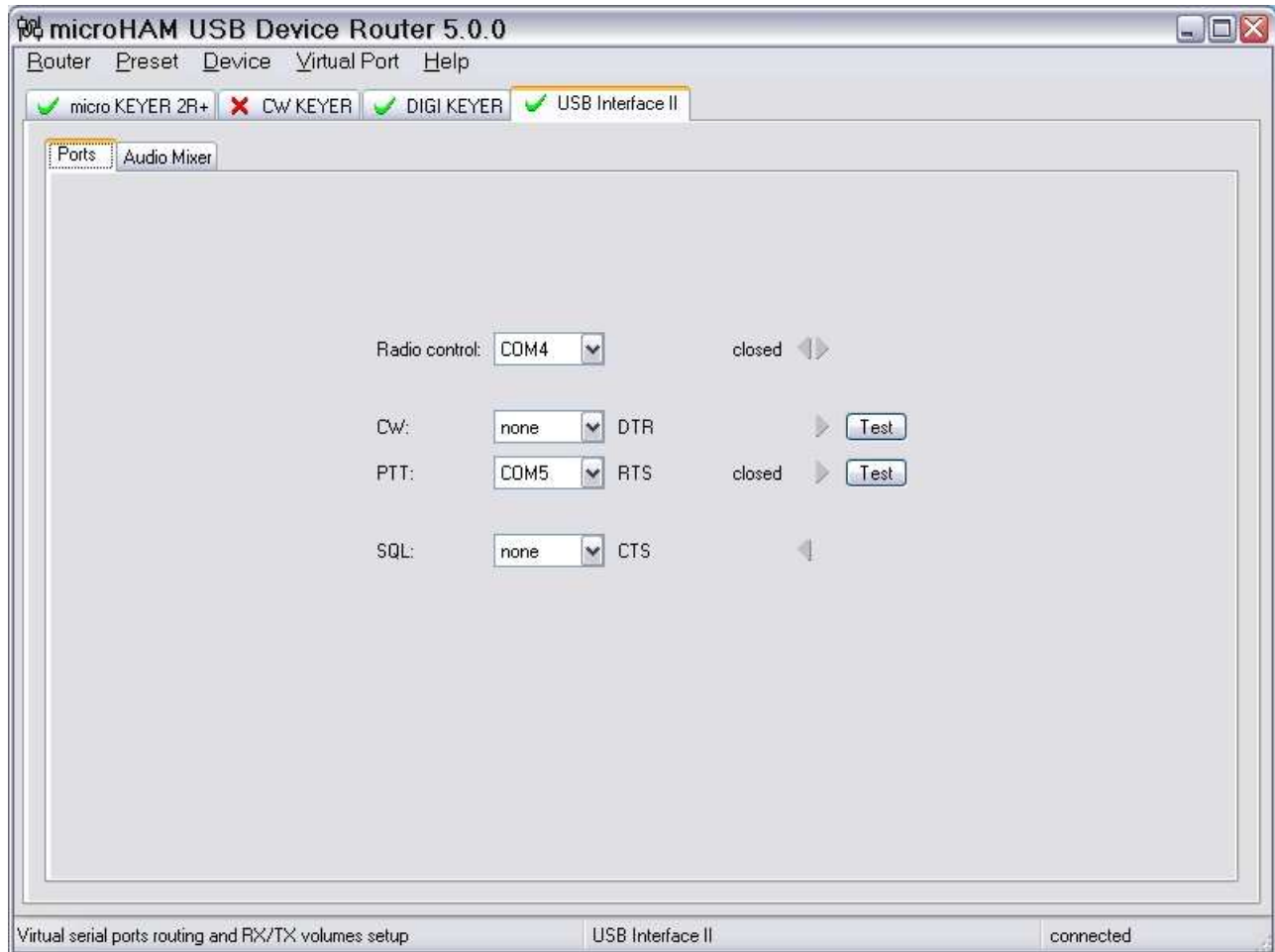


USB II and DXBase 2007 setup guide

Router setup:

Note: The absolute port numbers do not matter. The key is consistency - the same port number must be used for a specific function every time it is used.

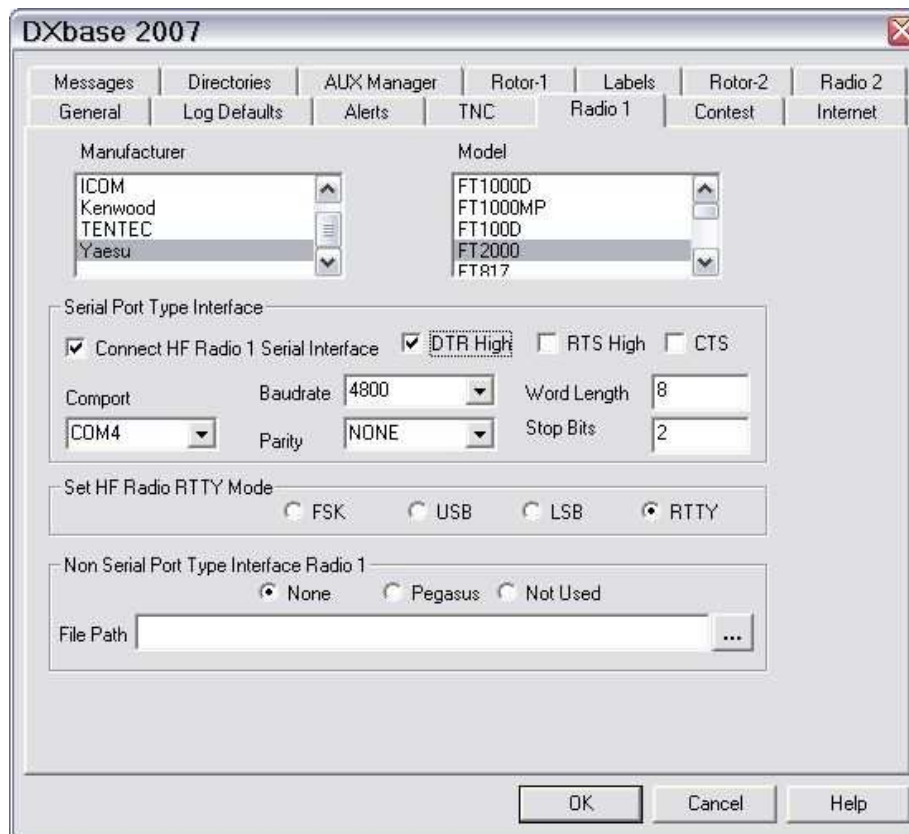
1. Assign the radio control virtual COM port.
2. The internal DXBase Keyer will not work with USB Interface II. Do not set a port for CW.
3. Assign a port for PTT if you use DXBPSK or separate digital mode software.



4. Save the settings to a preset by selecting **Preset | Save as**. Choose a position and name it DXBase.

DXBase 2007 setup:

1. Click **Tools | Options | User Options** to open DXBase configuration notebook ...



2. Select the Radio page and assign your radio to the virtual COM port you used in Router's Ports tab
3. Set the Baudrate, Word Length, Parity and Stop Bits settings required by your radio.
4. Click OK to save your settings

5. Open DXBPSK and click on **Settings | General Setup.**
6. In PTT Control Setup, select the virtual port you set for PTT on Router's Ports Tab.
7. Select the appropriate sound card.
8. Click OK to save your settings.

