

# USB Interface II with fldigi

## Router setup:

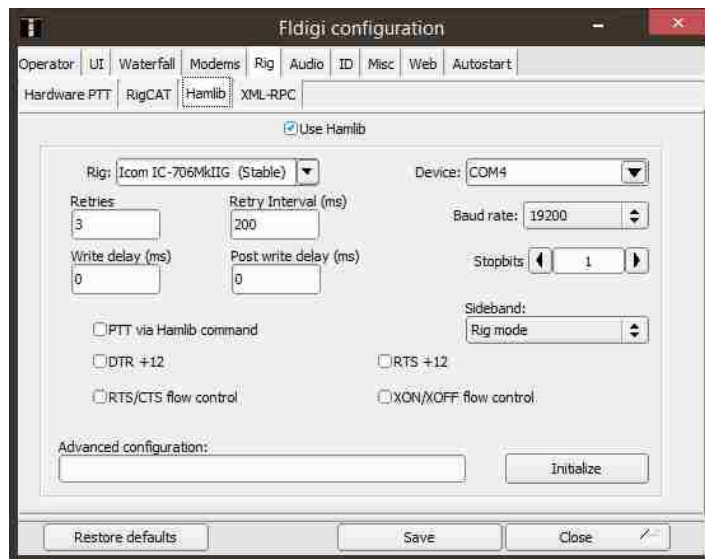
Note: The absolute port numbers do not matter. The key is consistency - the same port number must be used for a specific function every time it is used.

1. Assign a virtual port for radio control.
2. Use a different port for PTT than the port used for CAT.
3. FLdigi does not support computer generated CW. Leave the CW Port set to None.



4. Save the settings to a preset by selecting **Preset | Save as**. Choose a position and name it FLdigi.

## FLdigi setup:



1. Click **Configure | Rig Control ...**

2. Select the Hamlib tab

3. Select your rig

4. Set Device to the port you selected for CAT in Router and set the data rate as needed for your rig.

5. **Uncheck** check "PTT via Hamlib command"

6. Click Initialize and save

7. Select Hardware PTT

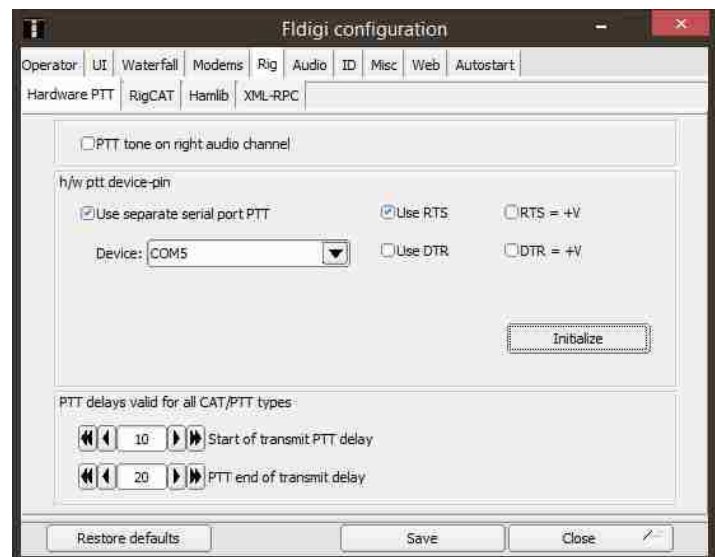
8. Check "Use Separate serial port PTT"

9. Set Device to the port you selected for PTT in Router

10. Check "Use RTS"

11. Set PTT delays appropriate for your transceiver and amplifier if used. 10 ms at the start and 20 ms at the end are suitable for most transceivers without an amplifier.

12. Click Initialize, save and Close



1. Select Save and Close

2. Click **Configure | Sound Card ...**

3. Select "PortAudio"

4. Set Capture (Audio Input) to the soundcard in your computer.

5. Set Playback (Audio Output) to the soundcard in your computer.

6. Click Save and Close.

