

# USB Interface II and Ham Radio Deluxe with DM780 setup

## Router setup:

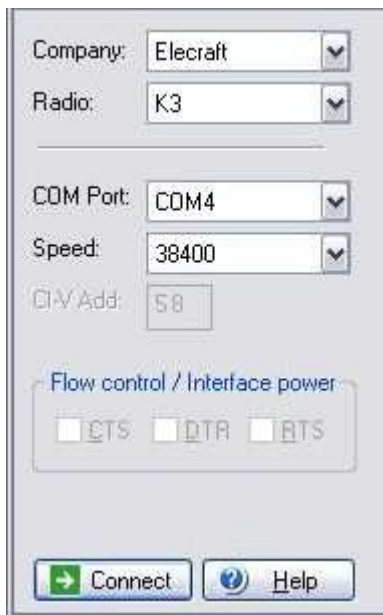
**Note:** The specific port numbers do not matter. The key is consistency - the same port number must be used for each function every time it is used.

1. Assign the radio control virtual COM port.
2. Assign a port for CW.
3. Assign the same port for PTT as the Radio (CAT).



4. Save settings to a preset by selecting menu **Preset | Save as**. Choose a position and name it HRD/DM780.

## Ham Radio Deluxe setup:

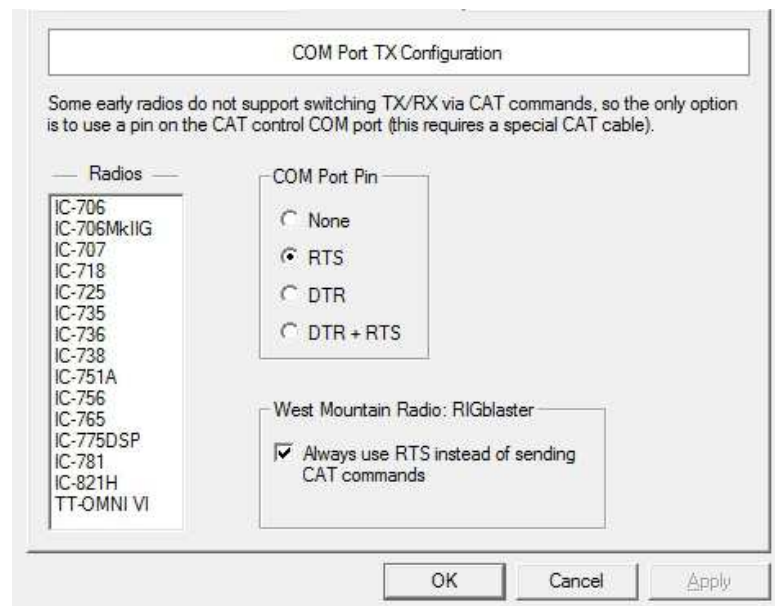


The screenshot shows the main configuration window for Ham Radio Deluxe. It includes the following fields and options:

- Company: Elecraft
- Radio: K3
- COM Port: COM4
- Speed: 38400
- GV Add: 58
- Flow control / Interface power:  CTS,  DTR,  RTS
- Buttons: Connect, Help

1. Select your transceiver manufacturer and model.
2. Set COM Port to the port you selected for CAT in Router.
3. Set the data rate for your transceiver's CAT connection.
4. Click "Connect"
5. Select Radio Options → Options → COM Port TX

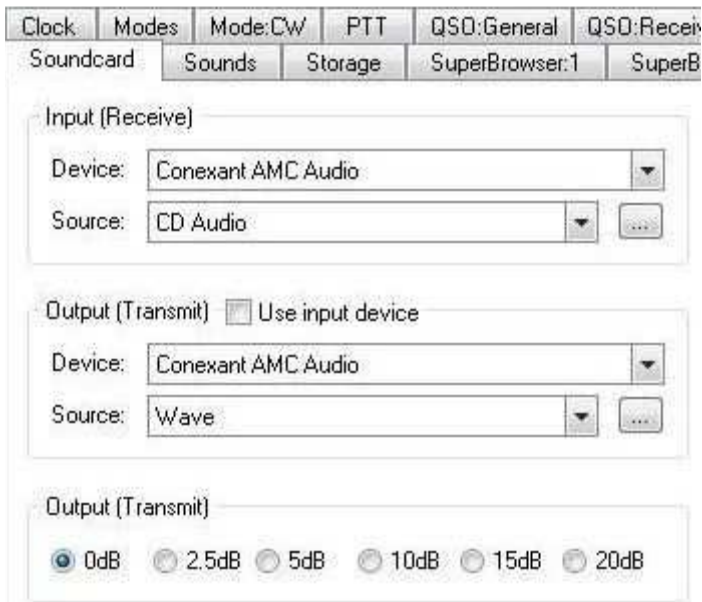
6. Set COM Port Pin to RTS
7. Check "Always use RTS instead of sending CAT commands."
8. Click "OK"



The screenshot shows the "COM Port TX Configuration" dialog box. It contains the following information:

- Header: COM Port TX Configuration
- Text: Some early radios do not support switching TX/RX via CAT commands, so the only option is to use a pin on the CAT control COM port (this requires a special CAT cable).
- Radios list: IC-706, IC-706MkIIIG, IC-707, IC-718, IC-725, IC-735, IC-736, IC-738, IC-751A, IC-756, IC-765, IC-775DSP, IC-781, IC-821H, TT-OMNI VI
- COM Port Pin options:  None,  RTS,  DTR,  DTR + RTS
- West Mountain Radio: RIGblaster:  Always use RTS instead of sending CAT commands
- Buttons: OK, Cancel, Apply

## DM 780 setup:



6. Select Program Options → Modes +IDs → CW
7. Check “use PTT” unless you prefer QSK CW
8. Check Enable serial (COM) port keying
9. Set Serial port to the port you selected for CW in Router and check “DTR”



10. Select PTT

11. Choose “via Ham Radio Deluxe”

12. If you plan to use RTTY-45-FSK (FSK), select Modes + IDs → RTTY
13. Check the Enable box under FSK Keying
14. Set Port to the port you defined for **CW** in Router.
15. Select “Microham II Device”
16. Select DTR
17. Close Program Options

1. Start DM780
2. Select Soundcard | Options
3. Set the Input (Receive) device to your computer soundcard.
4. Set the Output (Transmit) device your computer soundcard.
5. Set the Output (Transmit) level to 0 dB.

Use PTT [See also: PTT](#)

CW does not support all characters on your keyboard (see table). If an unsupported character is entered:

Beep  
 Send:

1st extension:

Compensation:

Weighting:

Enable serial (COM) port keying

Serial port:

Toggle pins:  DTR  RTS

