

USB Interface II and TRX Manager Setup

Router setup:

Note: The absolute port numbers do not matter. The key is consistency - the same port number must be used for a specific function every time it is used.

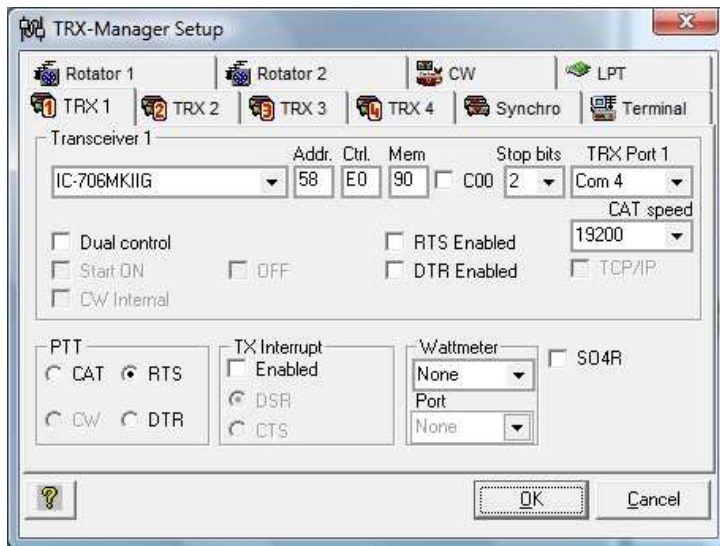
1. Assign the radio control virtual COM ports. Click the **Set** button and select your radio from the drop down box. Uncheck the **Disable router queries** box.
2. Assign the same port for CW as you assigned for Radio control
3. Assign the same port for PTT as you assigned for Radio control.

The screenshot shows the 'Ports' configuration window. It contains the following settings:

- Radio: COM4 (dropdown), closed (status), and a double-headed arrow button.
- CW: COM4 (dropdown), DTR (checkbox), closed (status), and a 'Test' button.
- PTT: COM4 (dropdown), RTS (checkbox), closed (status), and a 'Test' button.
- SQL: none (dropdown), CTS (checkbox), and a red arrow button.
- A 'Sound Card' button is located at the bottom center.

4. Save settings to a preset by selecting menu **Preset | Save as**. Choose a position and name it TRX Manager.

TRX Manager setup:



1. Open Parameters | Setup and select the TRX tab for the radio connected to USB Interface II ...
2. Set the TRX Port to the virtual COM port you used for control in Router's Ports tab
3. Select the Stop Bits, CAT Speed, and address as needed for your radio.
4. Uncheck "RTS Enabled" and "DTR Enabled."
5. Set PTT to RTS.

6. Click the CW tab
7. Set the CW port to the virtual port you assigned for CW in Router.
8. Make sure the "WinKey" box is empty
9. Select the DTR line for CW output.
10. Click "OK" to save your settings.

