

USB Interface II and TrueTTY setup

Router setup:

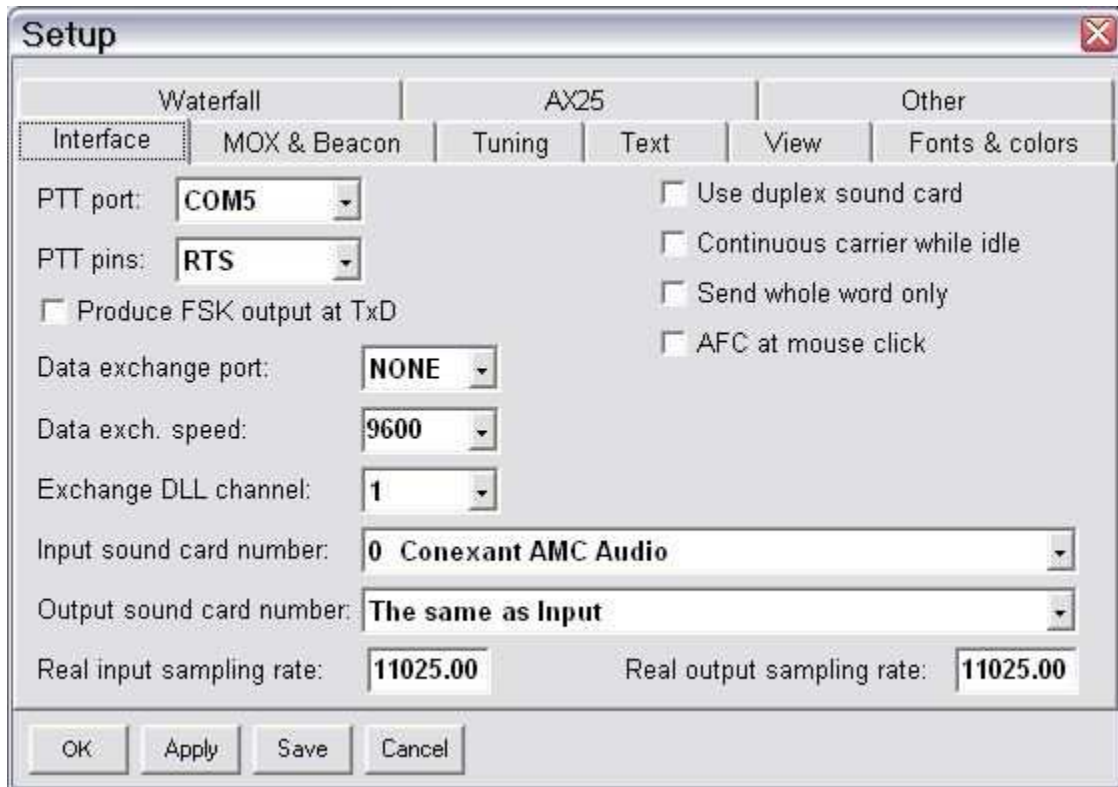
Note: The absolute port numbers do not matter. The key is consistency - the same port number must be used for a specific function every time it is used.

1. TrueTTY does not use a radio control port. You may assign the Control port for use by a logger or OmniRig.
2. TrueTTY does not use the CW Port but you may assign the same port for CW and PTT for use by CW Type.
3. Assign a port for PTT.



4. Save settings to a preset by selecting menu **Preset | Save as**. Choose a position and name it TrueTTY.

TrueTTY setup:



1. Click **Setup | Interface**
2. Set the PTT to the port you assigned in Router.
3. Set PTT pins to RTS
4. USB Interface II can not be used for FSK with TrueTTY. Do not check the "Produce FSK output at TxD" box. TrueTTY will use AFSK with USB Interface II.
5. Select th soundcard you have connected to USB Interface II.
6. Set other options as needed for your operation.